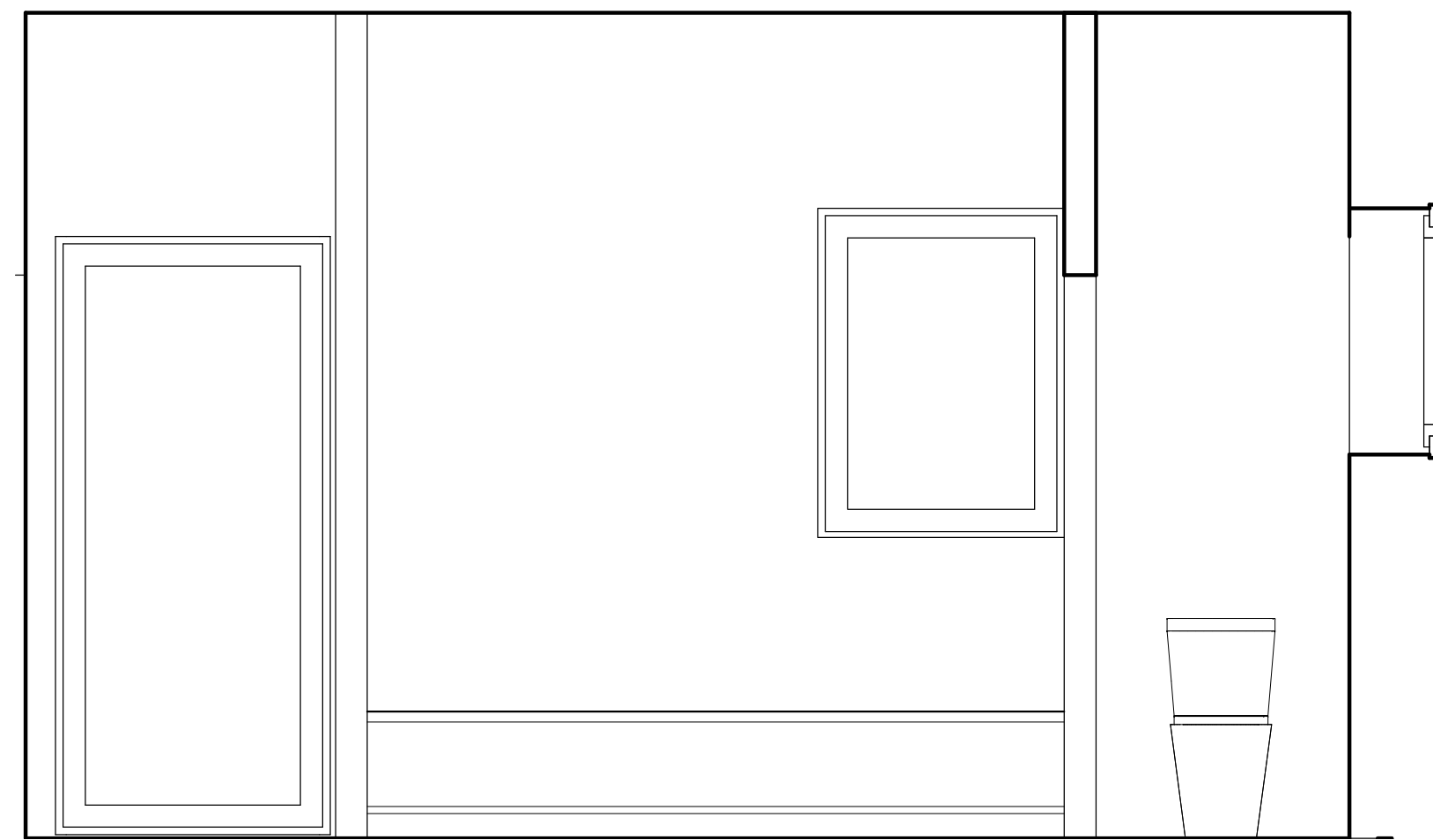
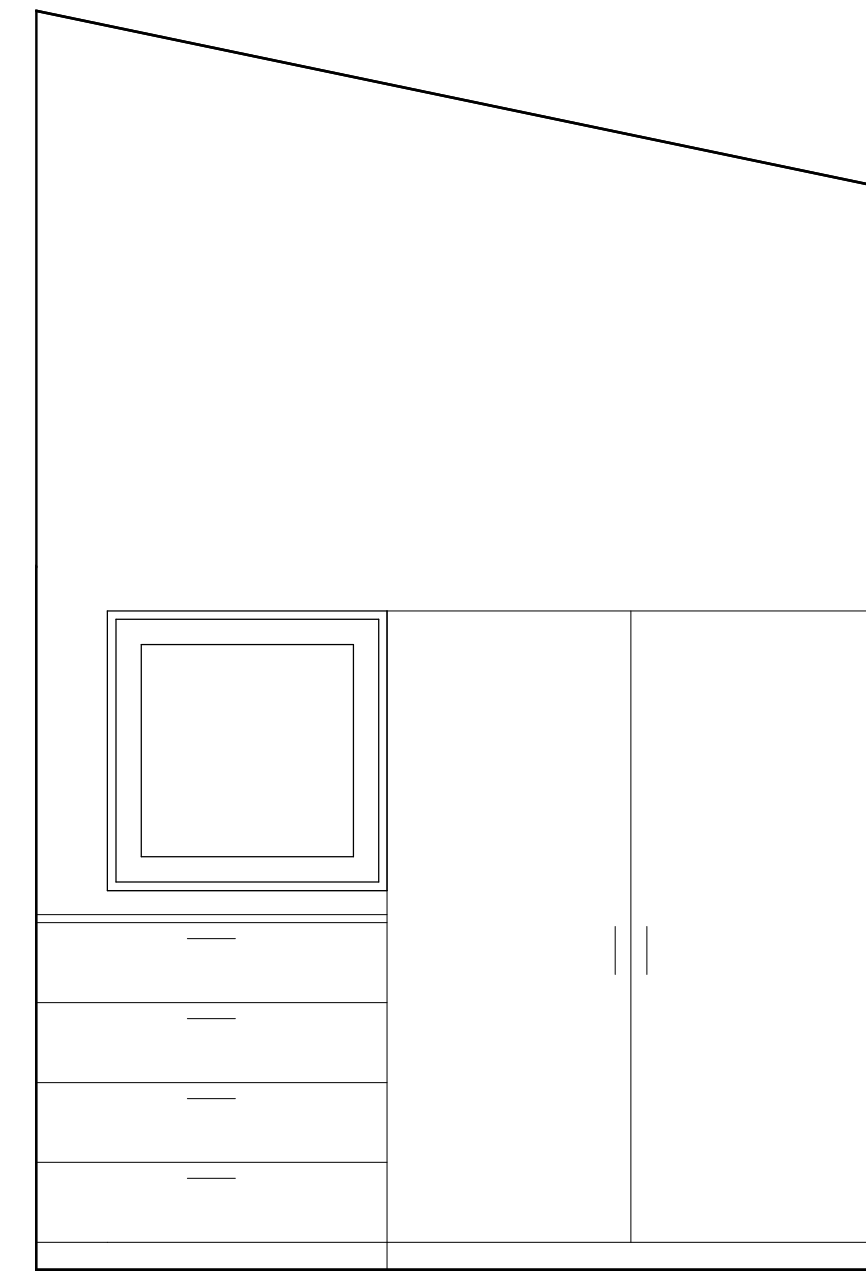


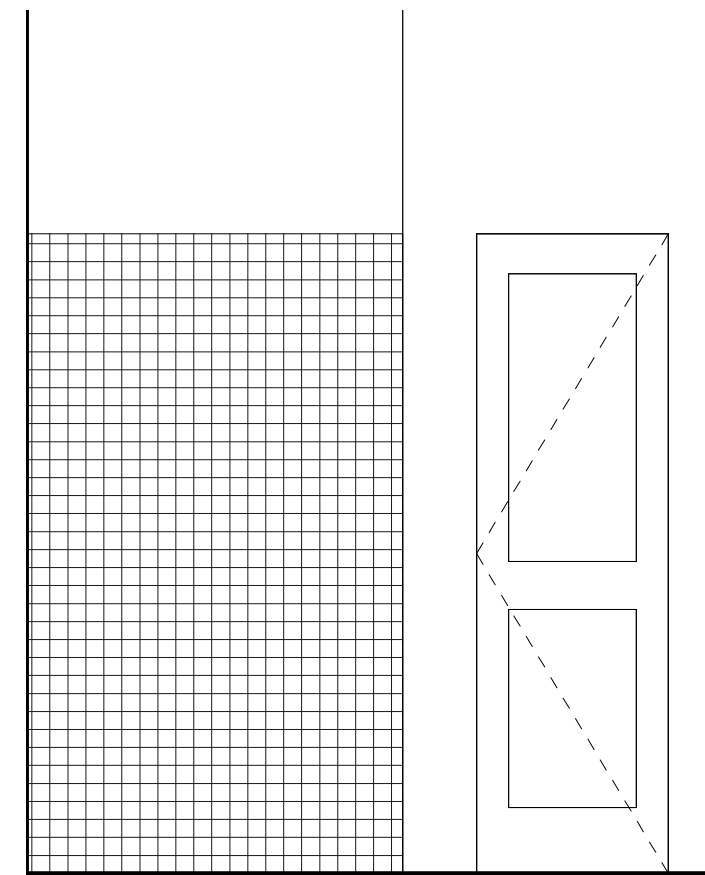
**FOR PERMITTING AND  
PRICING ONLY  
NOT FOR CONSTRUCTION**



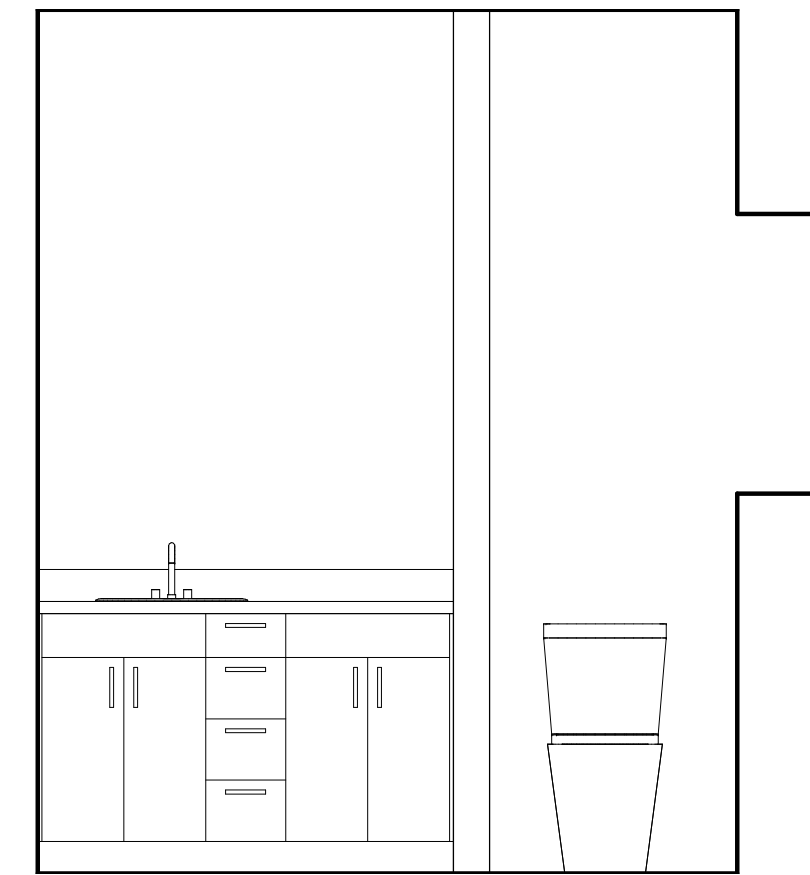
6 MUDROOM NORTH  
1/2" = 1'-0"



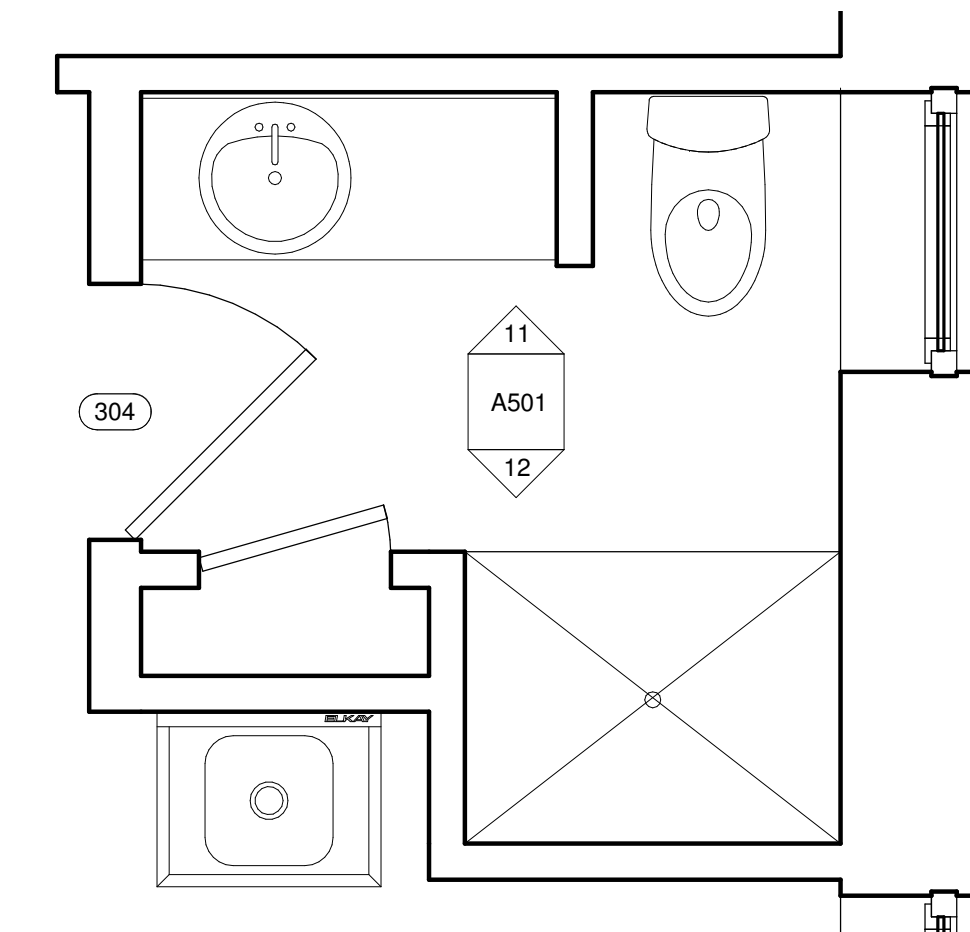
13 INT- MASTER BED EAST  
1/2" = 1'-0"



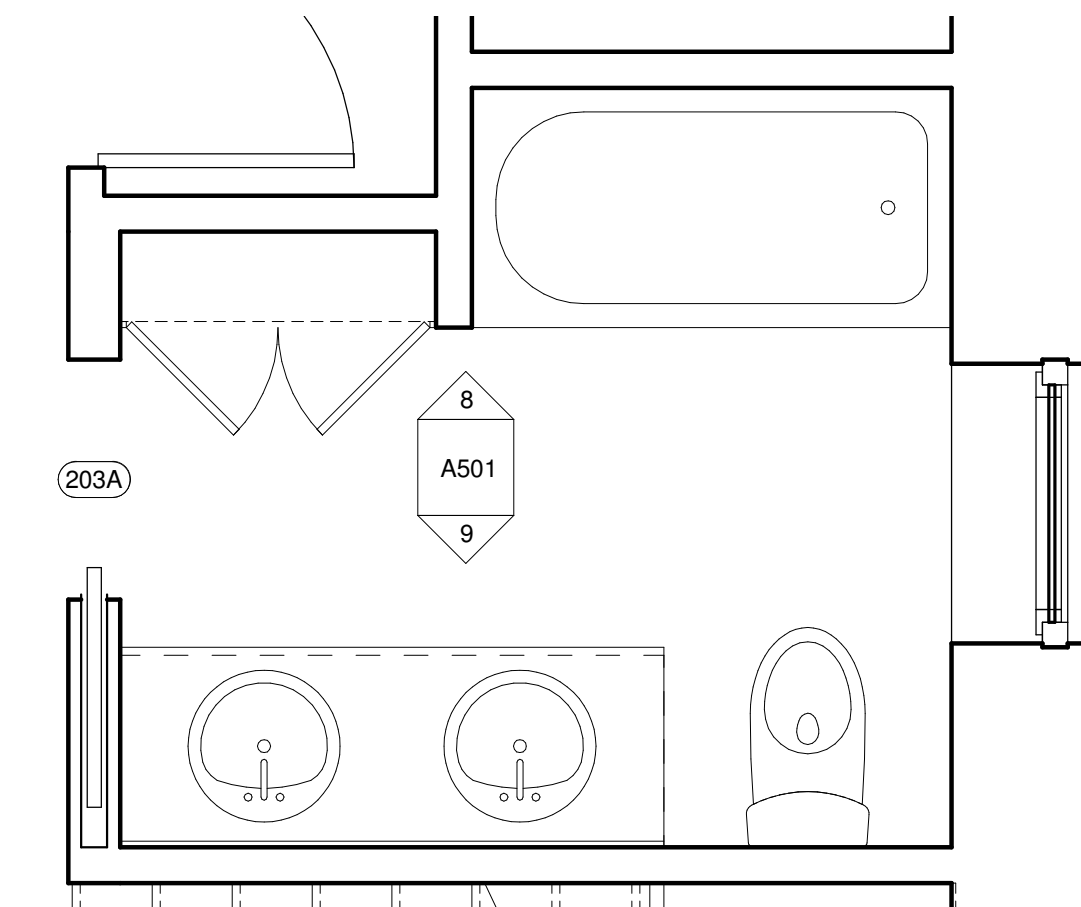
12 MASTER BATH SOUTH  
1/2" = 1'-0"



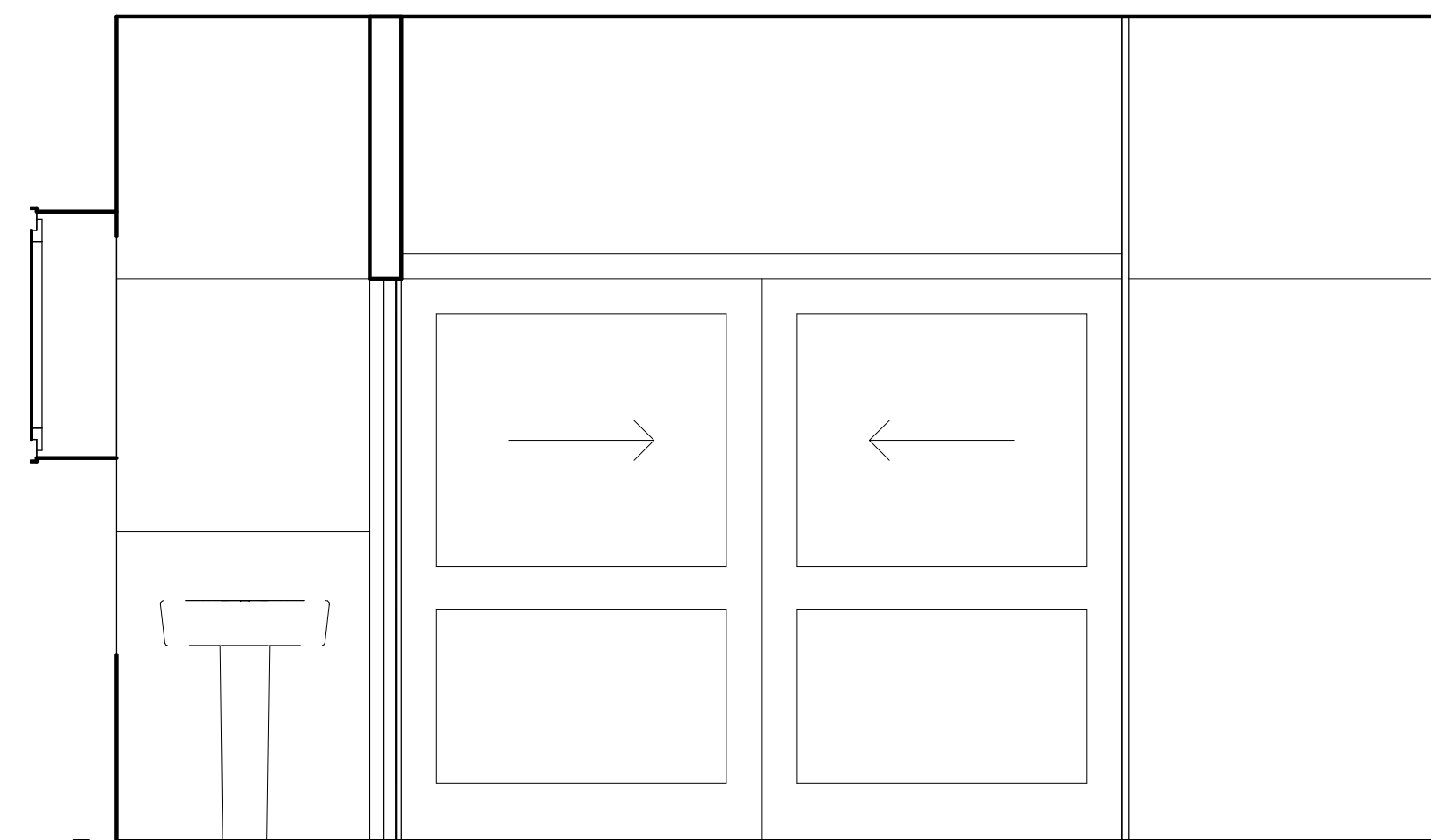
11 MASTER BATH NORTH  
1/2" = 1'-0"



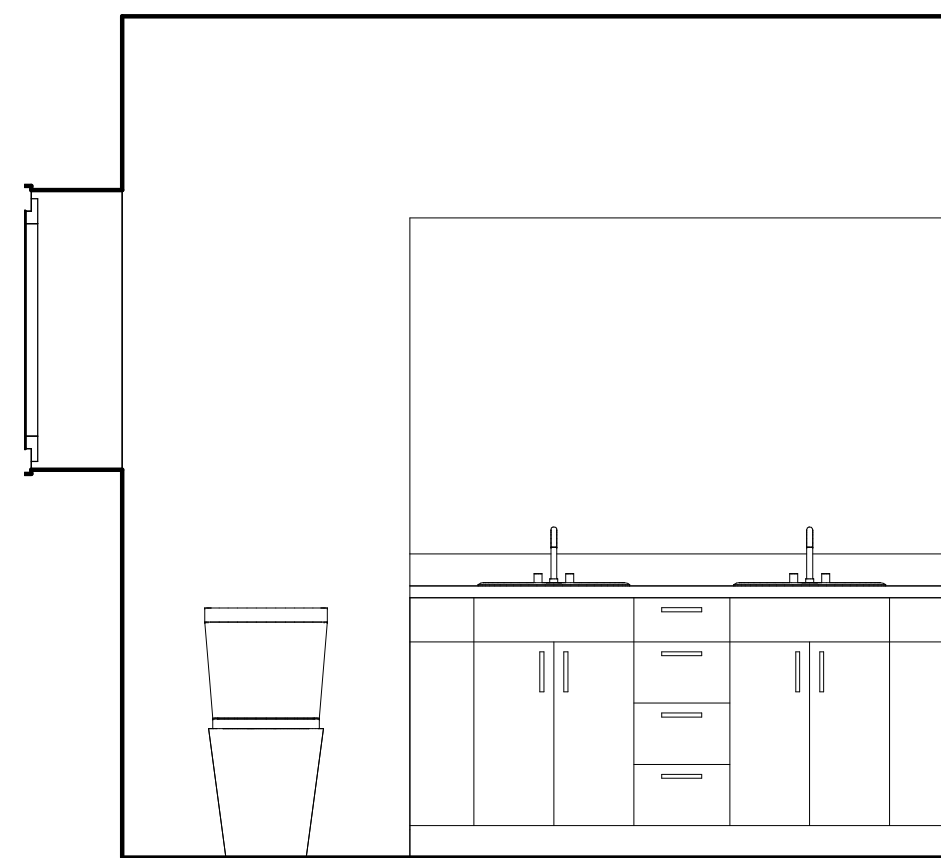
10 ENLARGED MASTER BATH PLAN  
1/2" = 1'-0"



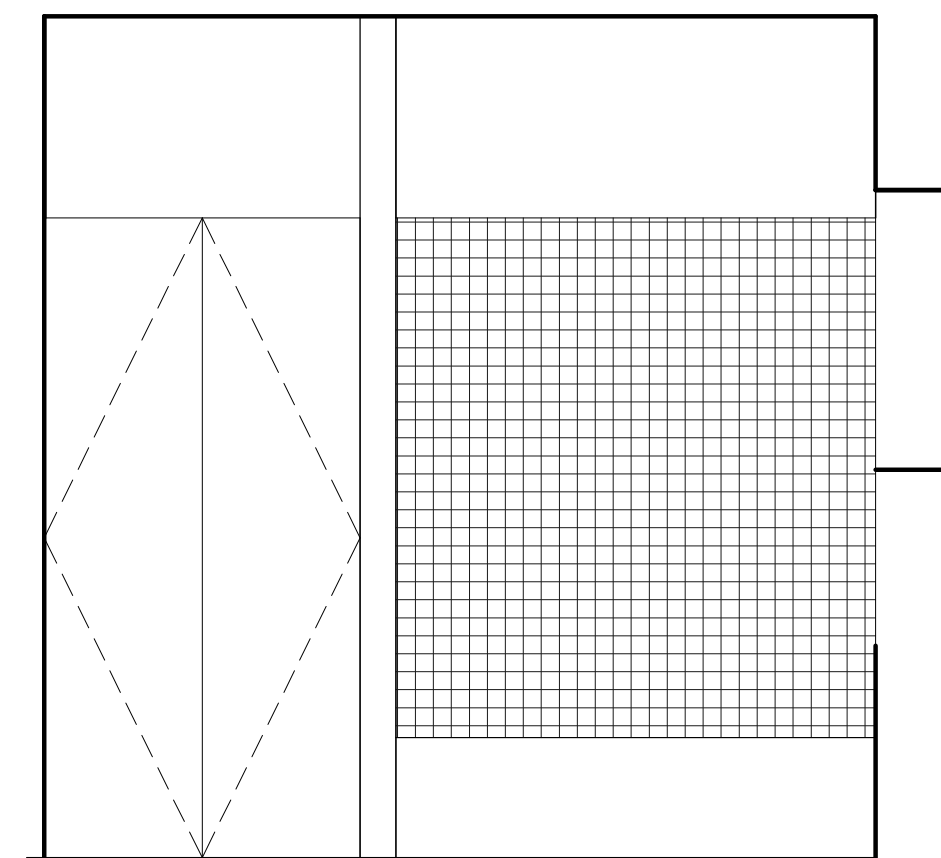
7 ENLARGED BATHROOM PLAN  
1/2" = 1'-0"



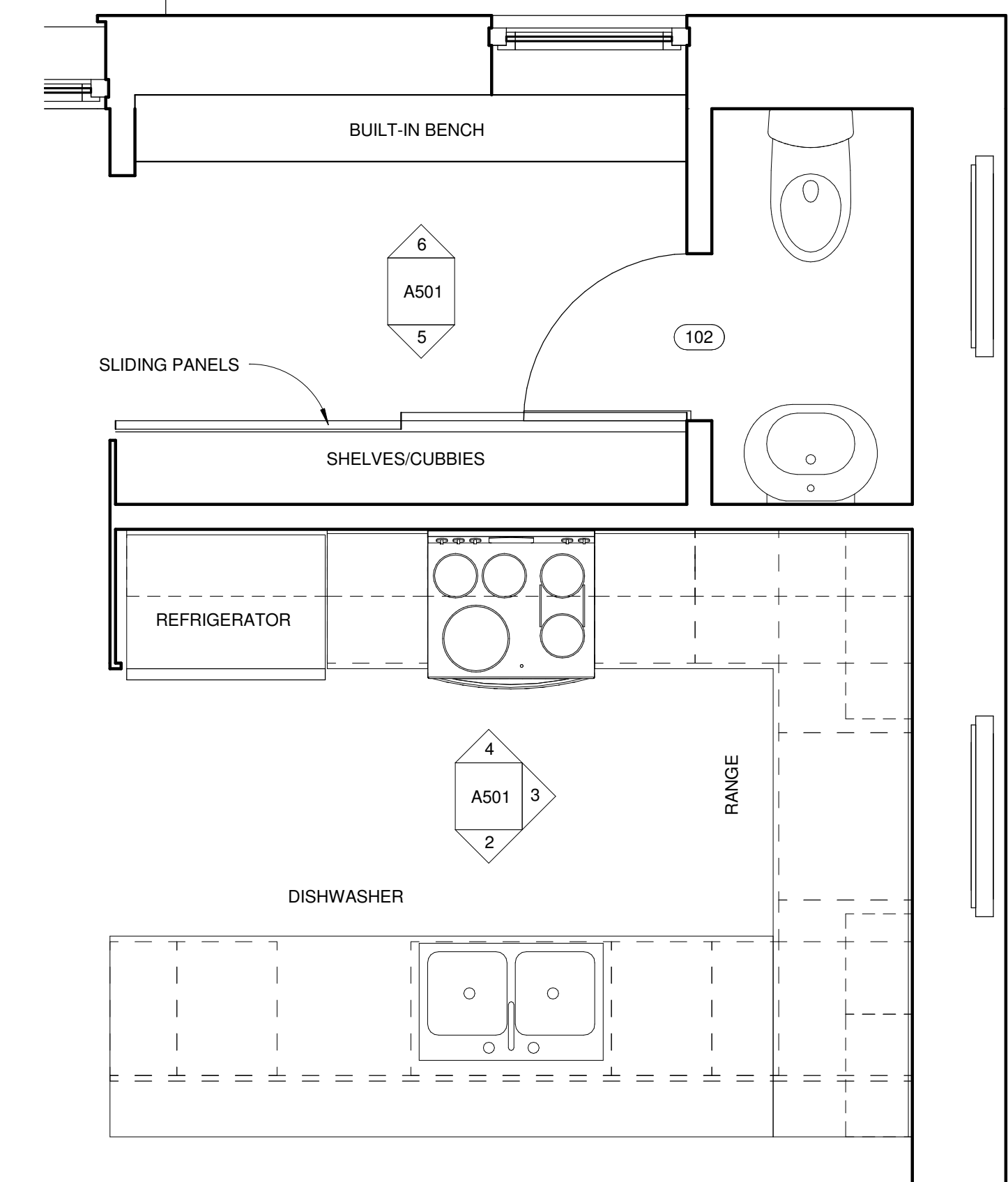
5 MUDROOM SOUTH  
1/2" = 1'-0"



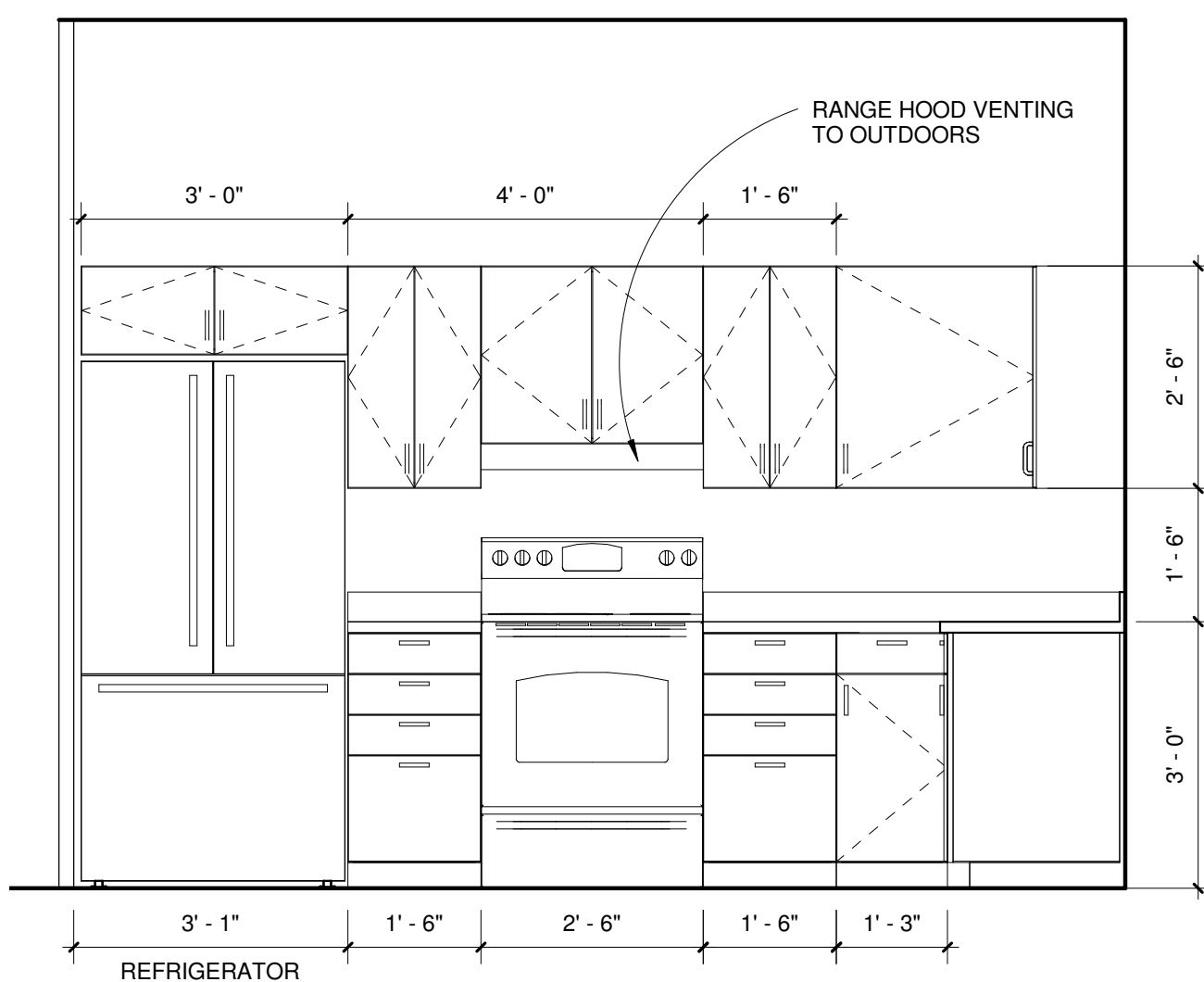
9 BATHROOM SOUTH  
1/2" = 1'-0"



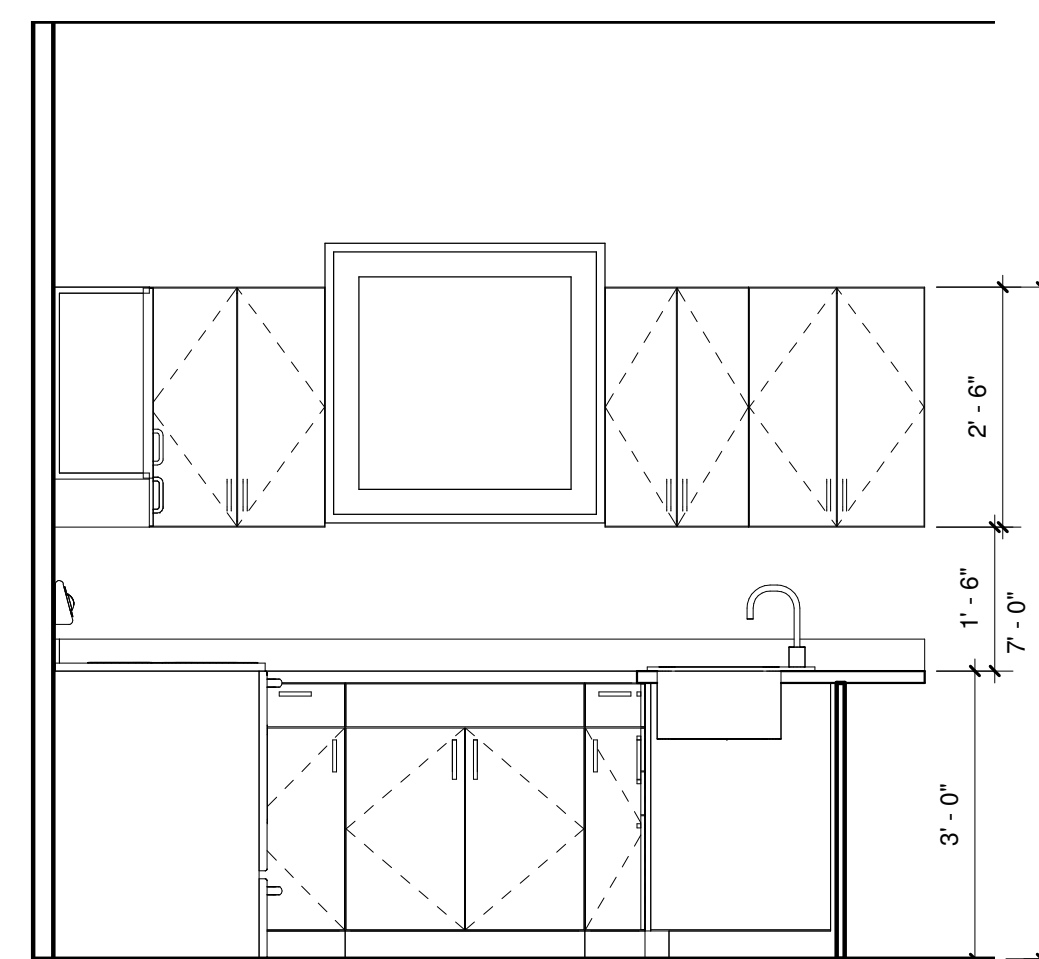
8 BATHROOM NORTH  
1/2" = 1'-0"



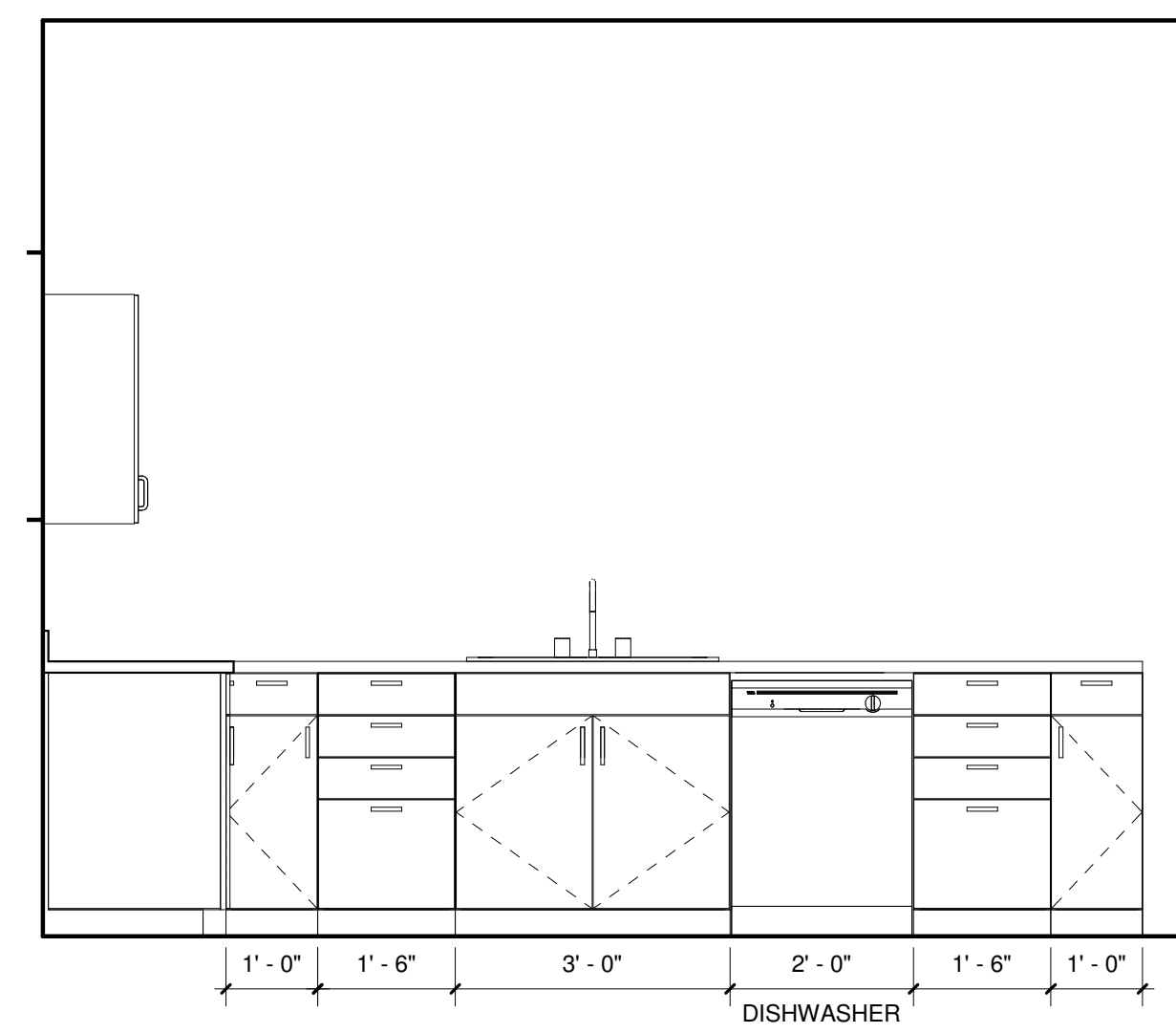
1 ENLARGED KITCHEN PLAN  
1/2" = 1'-0"



4 KITCHEN NORTH  
1/2" = 1'-0"



3 KITCHEN EAST  
1/2" = 1'-0"



2 KITCHEN SOUTH  
1/2" = 1'-0"

**OLINS RESIDENCE**  
2 TAYLOR STREET  
PORTLAND, MAINE

**BR BURN**  
architecture for life  
20 Maple St. Suite 201 Portland, ME 04101 207-774-6462

CONSULTANTS:

REVISIONS:

ISSUED: 6/25/14  
PROJECT No: 1314  
DRAWN BY: Author  
CHECKED BY: Checker  
SHEET TITLE:  
INTERIOR  
ELEVATIONS

**A501**