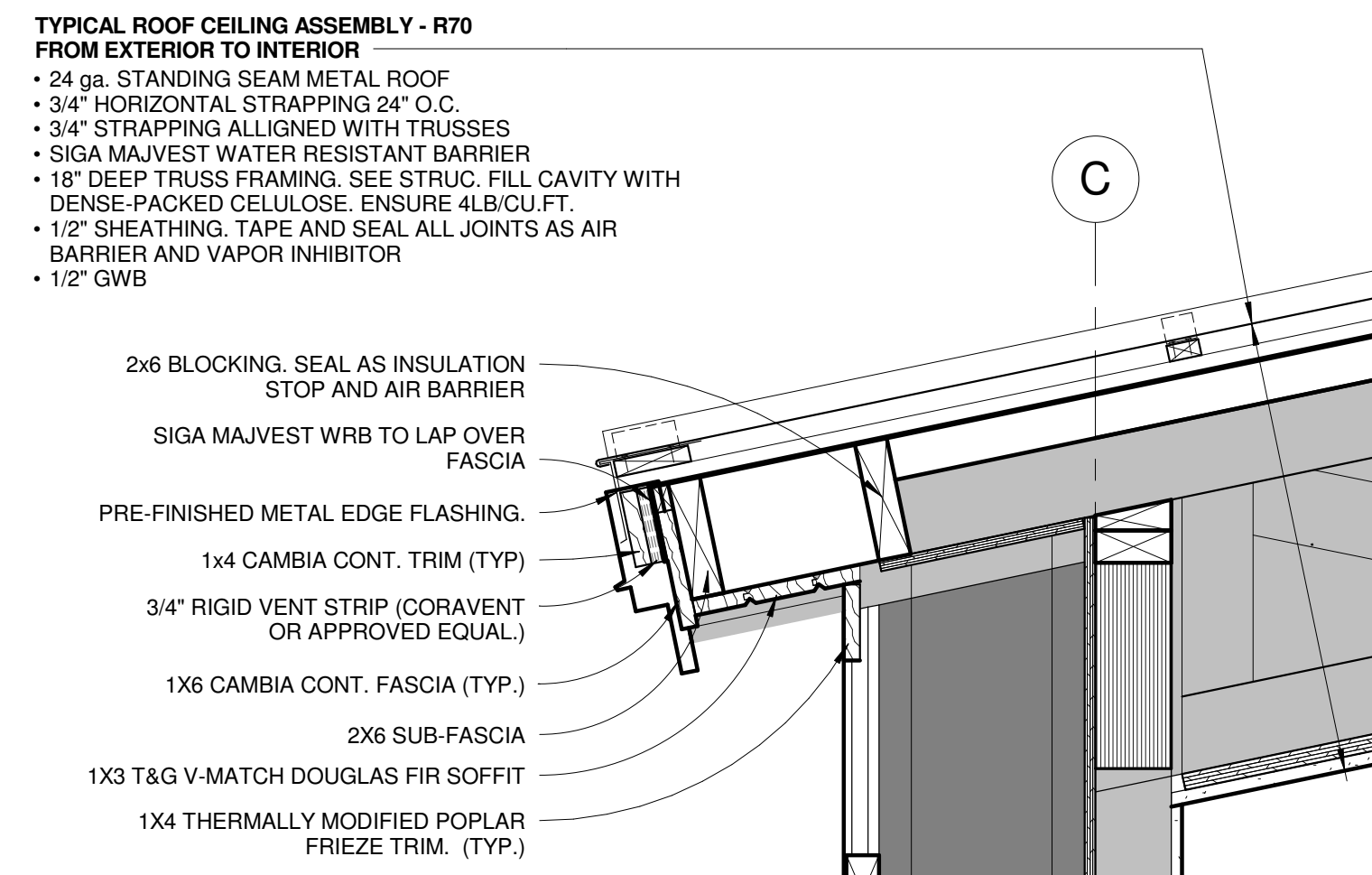
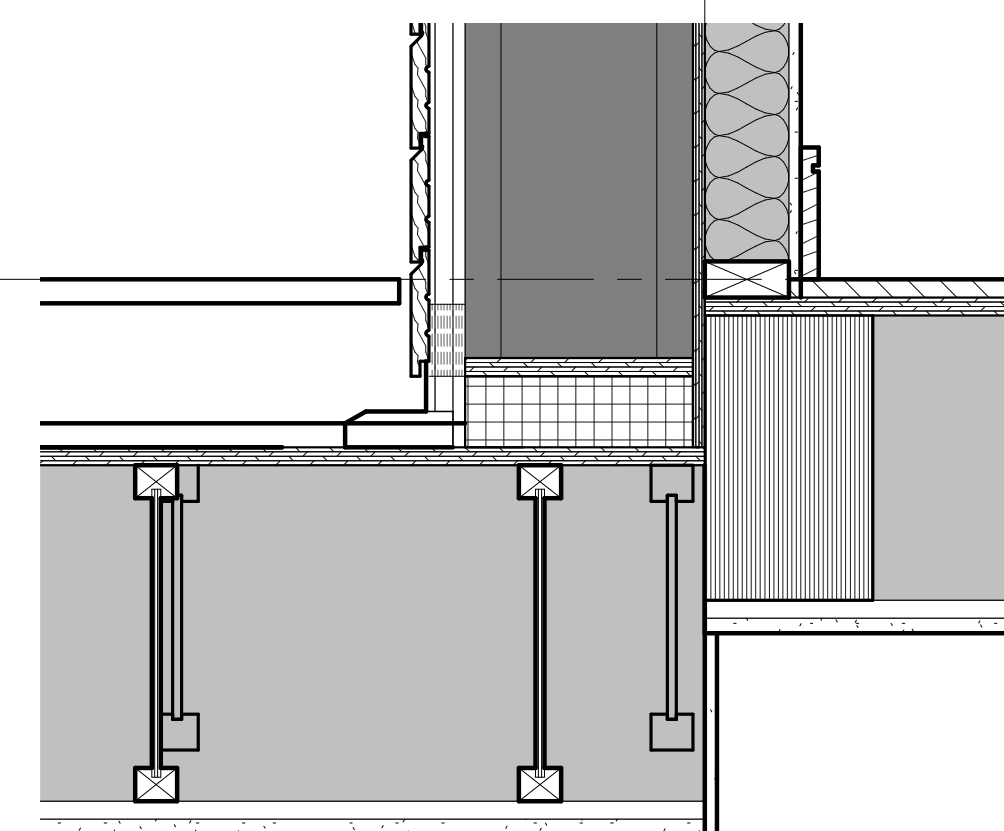


4 DETAIL - ROOF RAKE
1 1/2" = 1'-0"

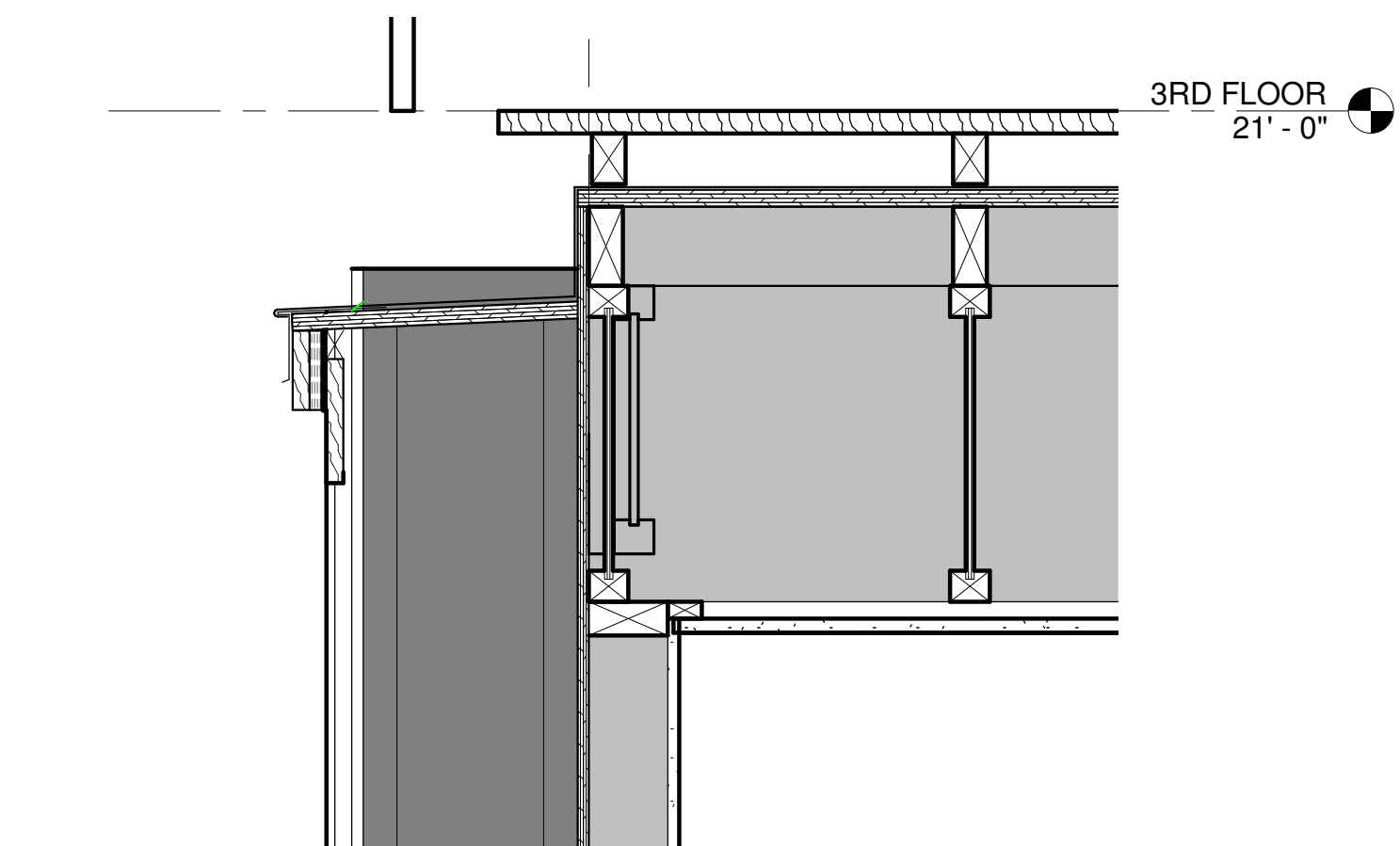


TYPICAL WALL ASSEMBLY - R50 FROM EXTERIOR TO INTERIOR
• 1x6 THERMALLY MODIFIED POPLAR SHIPLAP, 4 3/4" EXPOSURE
• 1-1/2" VERTICAL STRAPPING
• MONOLYTIC UV RESISTANT WRB
• VERTICAL WOOD I-JOISTS, ALIGN W/ AND FASTEN TROUGH TO STUDS W/ 4" GRK RSS SCREWS (OR APPROVED EQUAL). FILL CAVITY WITH DENSEPACKED CELLULOSE
• 1/2" APA RATED WALL SHEATHING, TAPE AND SEAL ALL JOINTS AS AIR BARRIER AND VAPOR INHIBITOR
• 2x4 STUD WALL (24" O.C.)
• 1/2" GWB

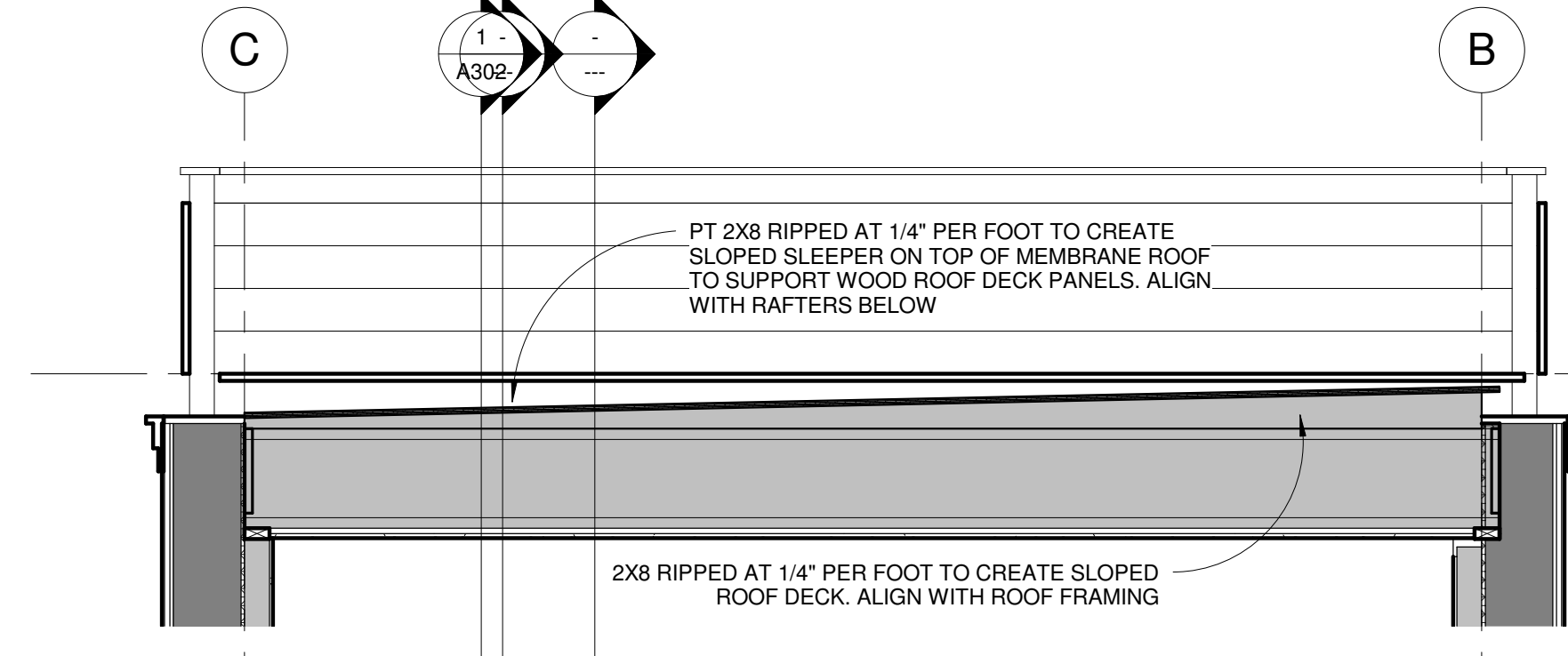
5 DETAIL - LOW EAVE
1 1/2" = 1'-0"



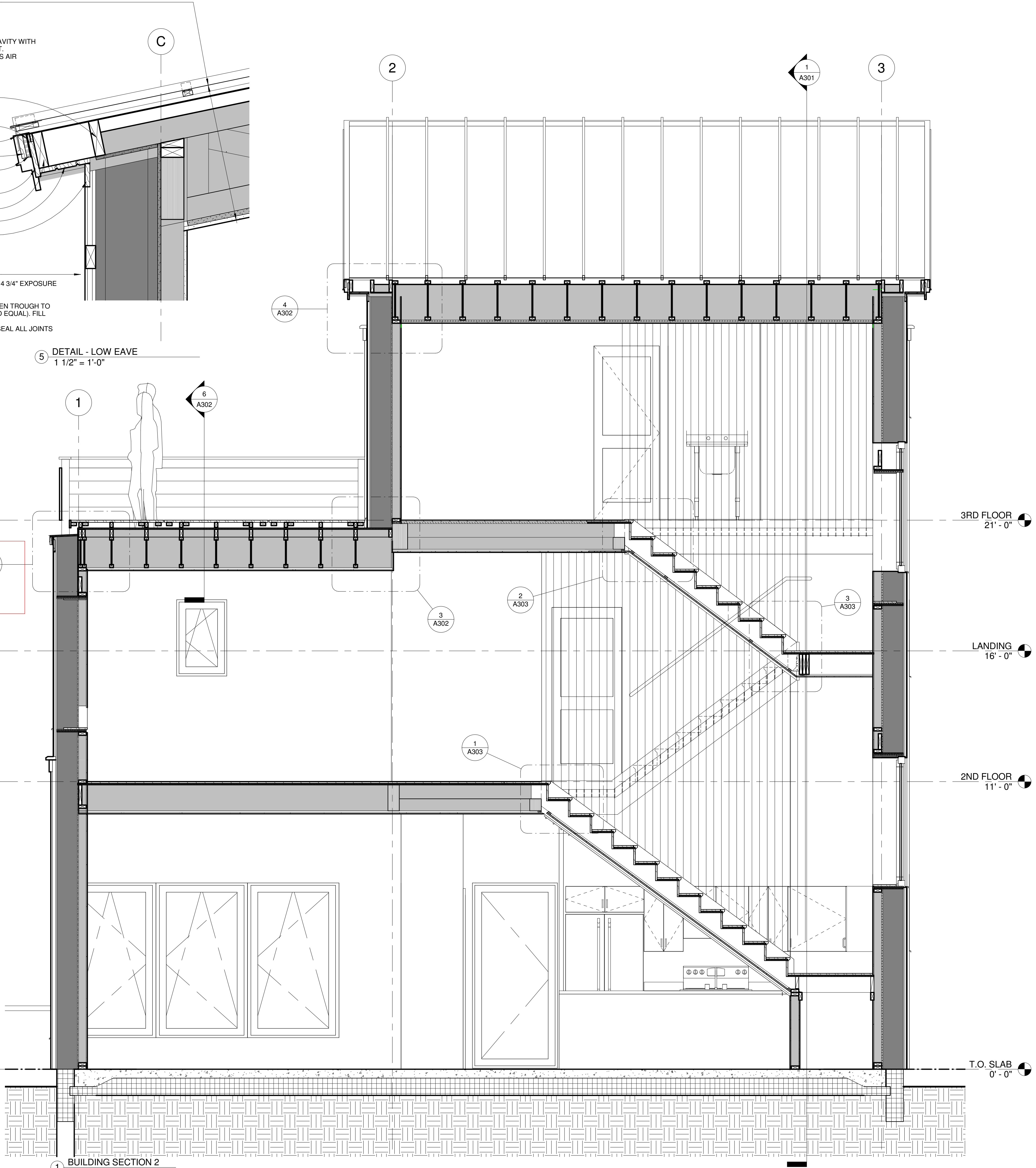
3 DETAIL - WALL TO ROOF
1 1/2" = 1'-0"



2 DETAIL - FLAT ROOF EDGE
1 1/2" = 1'-0"



6 FLAT ROOF SECTION
1/2" = 1'-0"



**FOR PERMITTING AND PRICING ONLY
NOT FOR CONSTRUCTION**