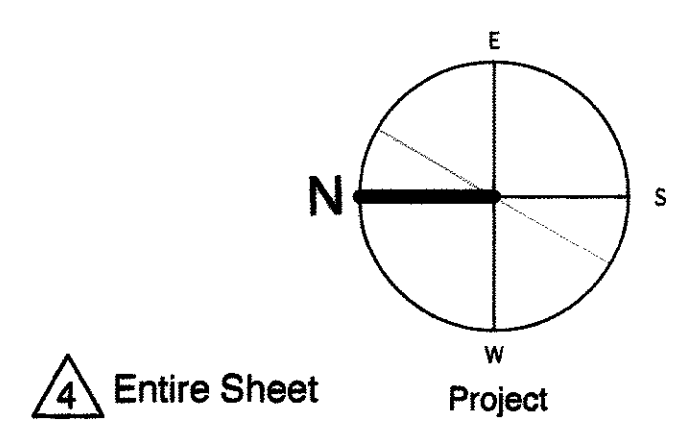
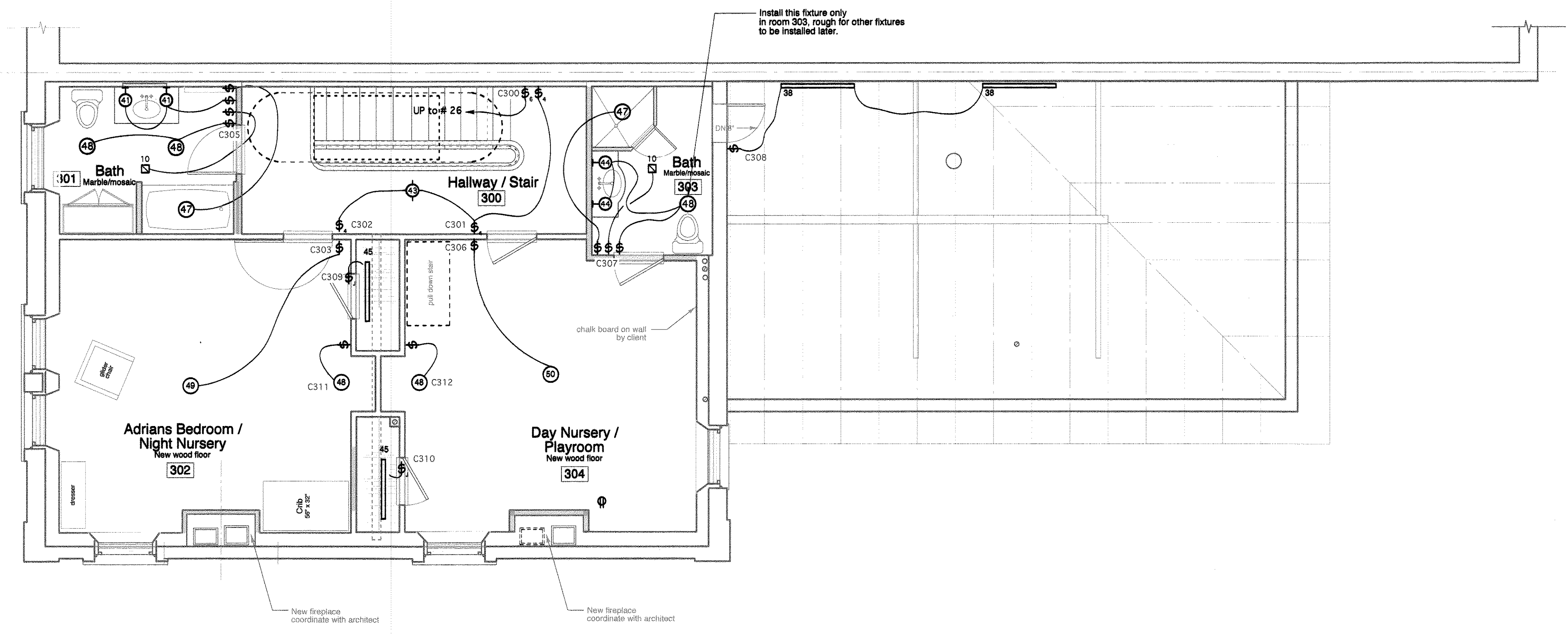


LIGHTING & ELECTRICAL SYMBOLS			
Ⓢ _w	Smoke detector wall mounted as required by code	Ⓢ _s	Duplex receptacle (S for switched)
Ⓢ _c	Smoke detector ceiling mounted as required by code	Ⓢ ₂₂₀	Receptacle 220 V
▲	CAT 5 - Cable TV / Data / Phone	Ⓢ	Receptacle in floor
Ⓢ	Recessed	Ⓢ _{GFI}	Duplex receptacle-Ground Fault Interrupt
Ⓢ _→	Recessed Directional	Ⓢ _{WP}	Duplex receptacle-weatherproof
Ⓢ	Ceiling mounted light fixture	Ⓢ _{JB}	Junction Box for direct wire
Ⓢ	track fixture	Ⓢ	Switch
Ⓢ	Wall mounted light fixture	Ⓢ ₃	3-way switch
Ⓢ _F	Floor lamp	Ⓢ _D	Dimmer switch
Ⓢ _T	Table lamp	Ⓢ _J	Jamb or motion sensor switch
x	Fluorescent strip x= length	Ⓢ	Exhaust fan
		x	device in millwork
		x	undercabinet light
C000 control point - switch name			

NOTE: SEE SCHEDULE FOR DIMMED CIRCUITS.



These drawings are the architect's instruments of service. A substantial amount of work to be done on the project is based on conversations between the Architect and Wright-Ryan Construction. If the drawings are used without the Architect's involvement in interpretation of the documents and review of field conditions, the Architect shall not be liable for problems with any aspect of the design during and after construction.

construction set 01/03/11

Van Dam Architecture and Design
 66 West Street
 Portland, Maine 04102
 207-775-0443
 FAX 775-2892
 studio@vandamdesign.com

Landscape Architect:
 James Doyle Design Associates
 123 Greenwich Avenue
 Greenwich, CT 06830

Structural Engineer:
 Becker Structural Engineers Inc.
 75 York Street
 Portland, ME 04101

Jenkins Residence
 294 Spring Street
 Portland, Maine

Third Floor Lighting and Specialty Outlet Plan
 Drawn by: JFR/PAL/KSH Scale: 1/4" = 1'-0" Date: 11/22/10
 Revisions: 4/14/09/11 Job #: 20913
E1.3