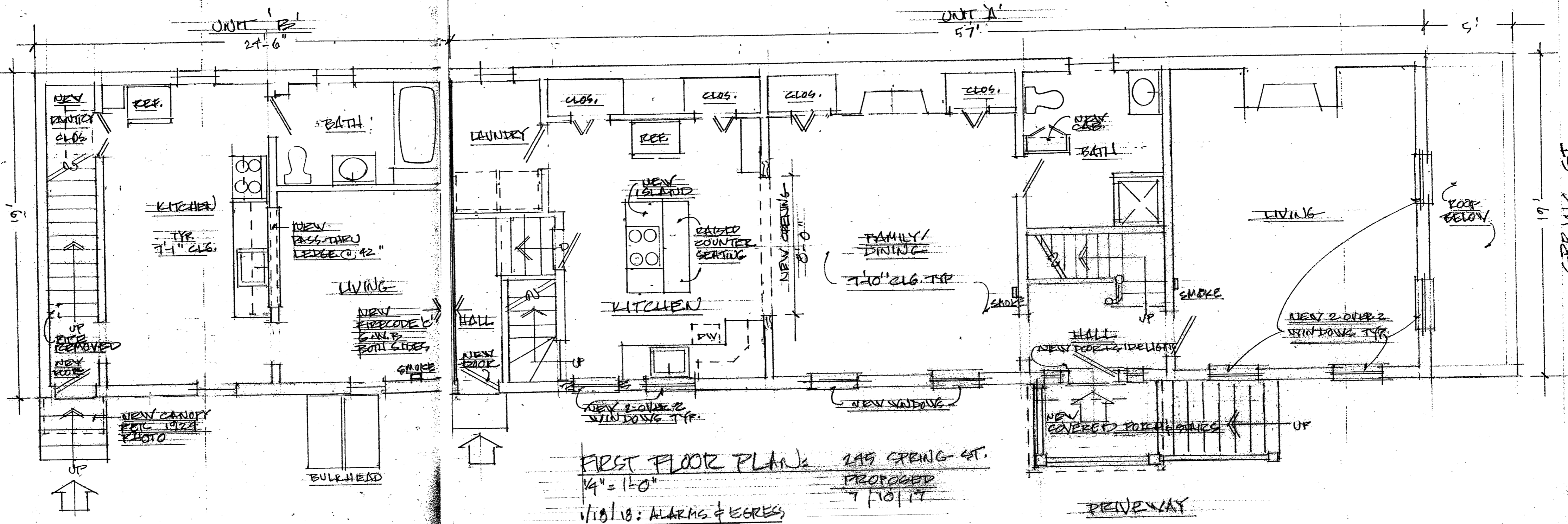
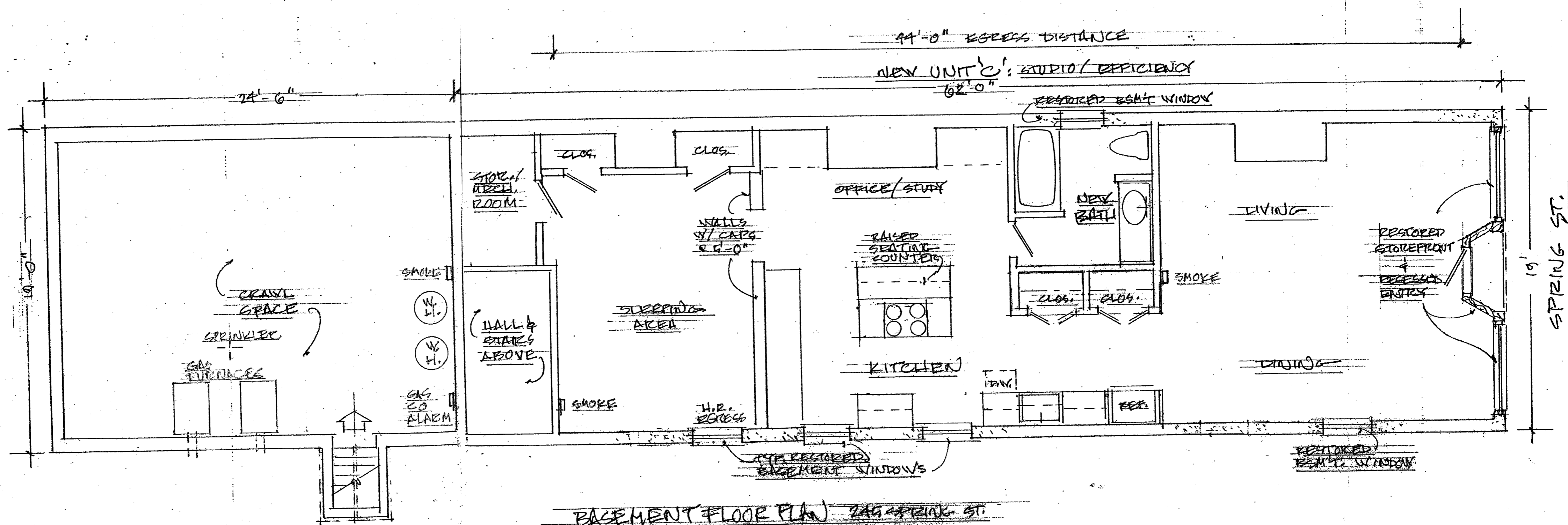


SECOND FLOOR PLAN: 245 SPRING ST.
 1/10/18: ALARMS & EGRESS 7/10/17
 1/10/18: ALARMS & EGRESS 7/10/17





BASEMENT FLOOR PLAN 249 SPRING ST.
 1/4" = 1'-0"
 1/18/18: ALARMS & EGRESS 1/10/17