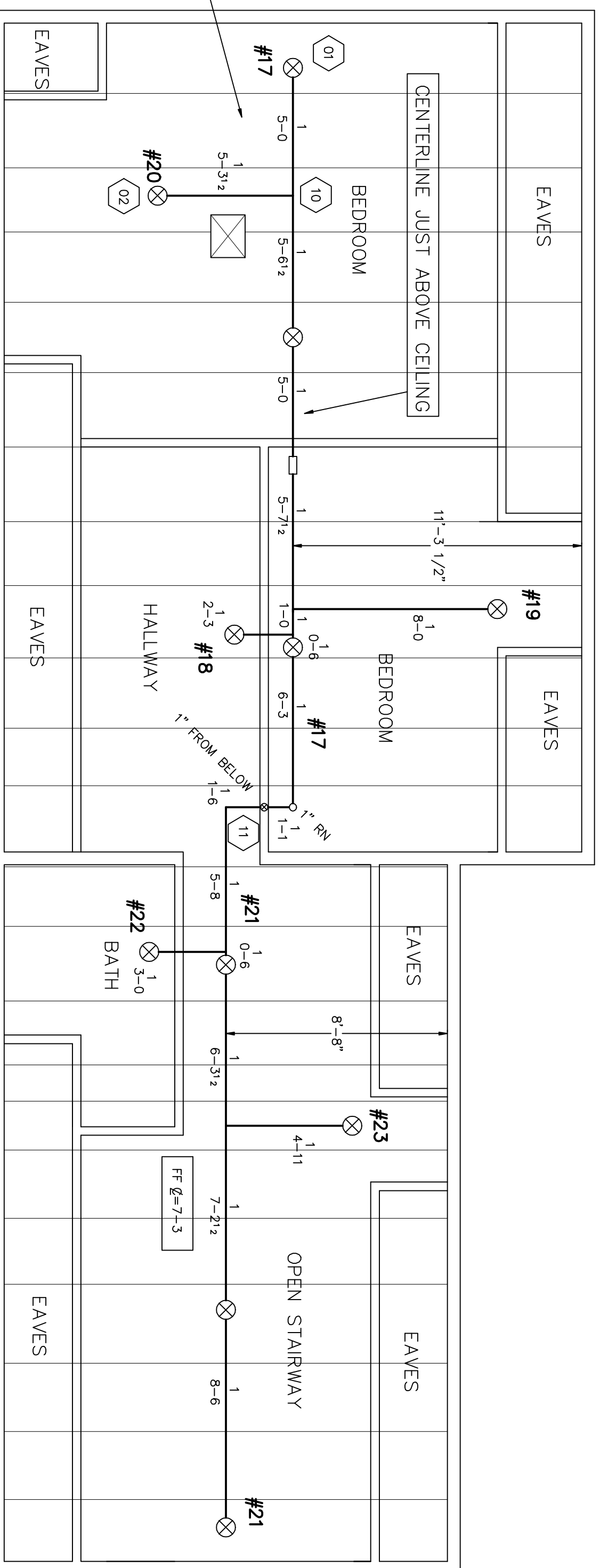
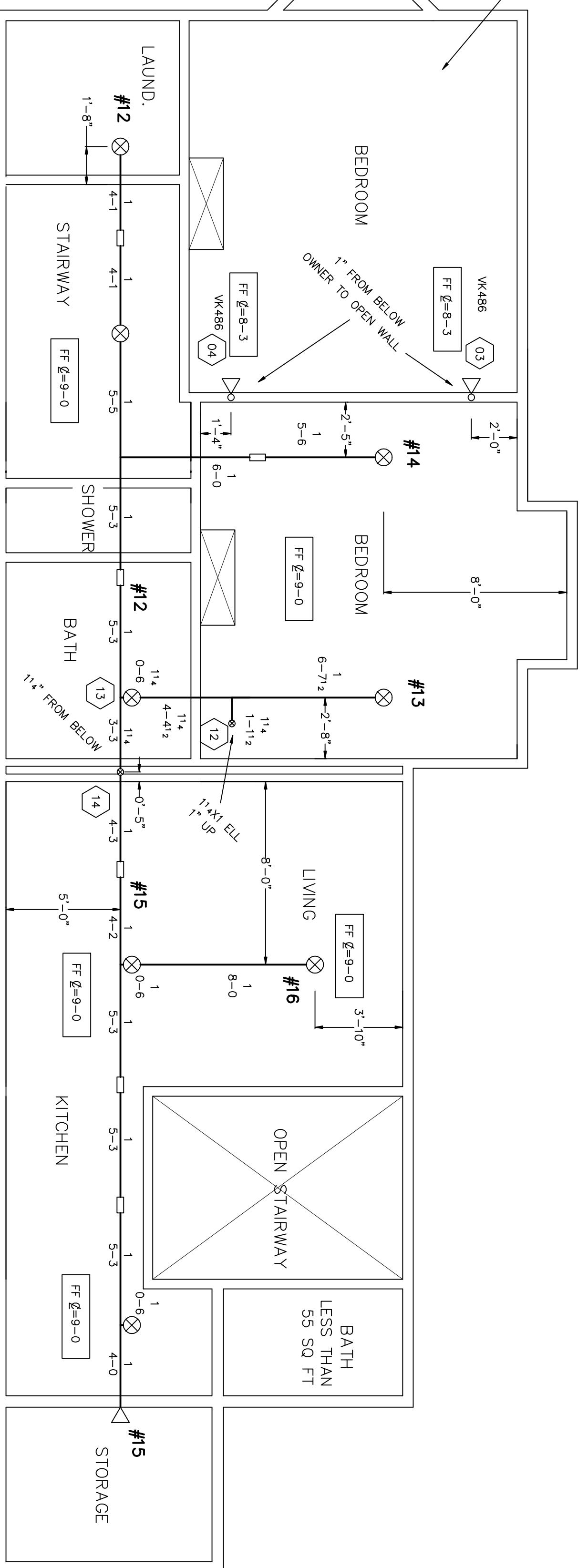


CALC FILE: 273 SPRING ST.W
 HYDRAULIC DATA
 BASIS OF DESIGN: 273 SPRING ST. RESIDENTIAL
 OCCUPANCY: RESIDENCE
 TOTAL OFFICE TUMP SPRINKLERS 2 1/2" K=4.9
 SYSTEM DEMAND AT CTR. OF RESIDENCE: 452.2 GPM 26.2 KPA 5 GPM
 SAFETY MARGIN: 0.8 PSI

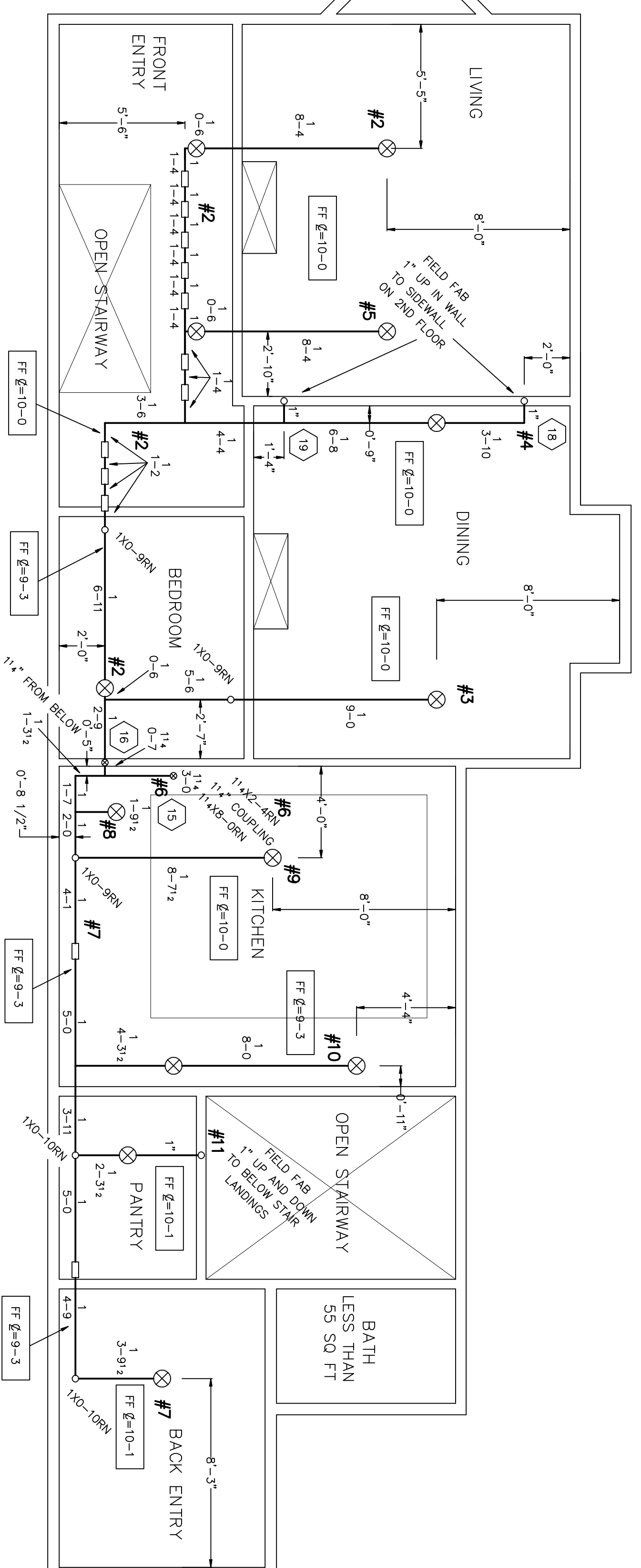
CALC FILE: 273 SPRING ST. RESIDENTIAL
 HYDRAULIC DATA
 BASIS OF DESIGN: 273 SPRING ST. RESIDENTIAL
 OCCUPANCY: RESIDENCE
 TOTAL OFFICE TUMP SPRINKLERS 2 1/2" K=4.9
 SYSTEM DEMAND AT CTR. OF RESIDENCE: 452.2 GPM 26.2 KPA 5 GPM
 SAFETY MARGIN: 6.0 PSI



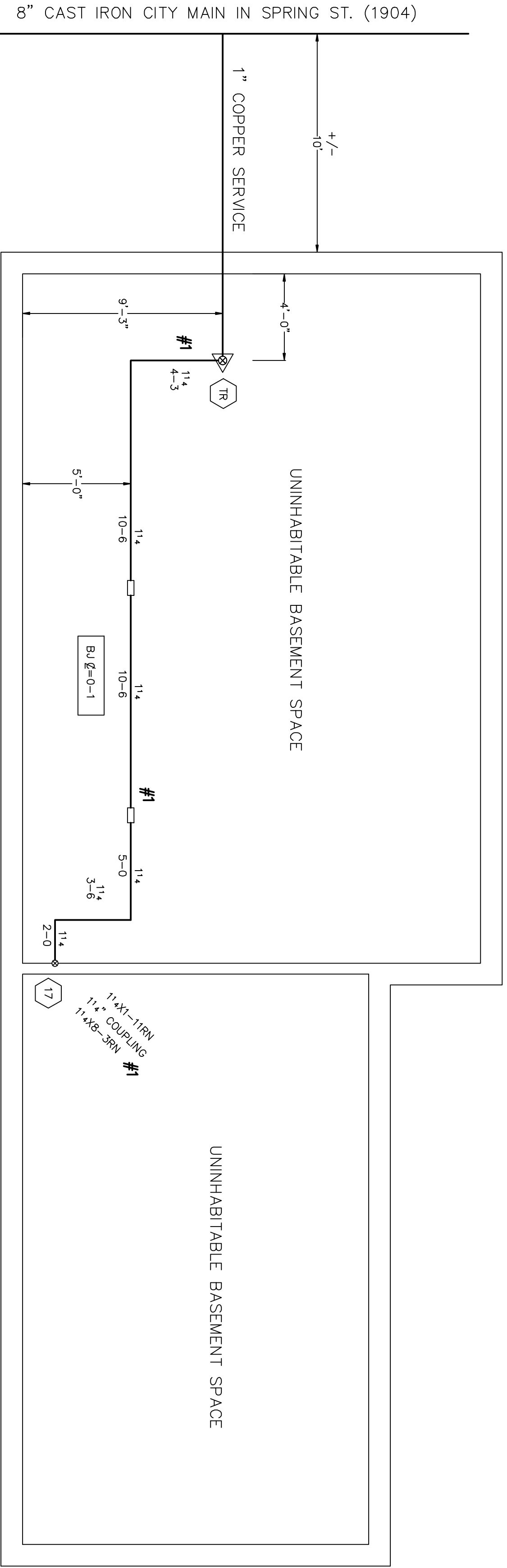
THIRD FLOOR



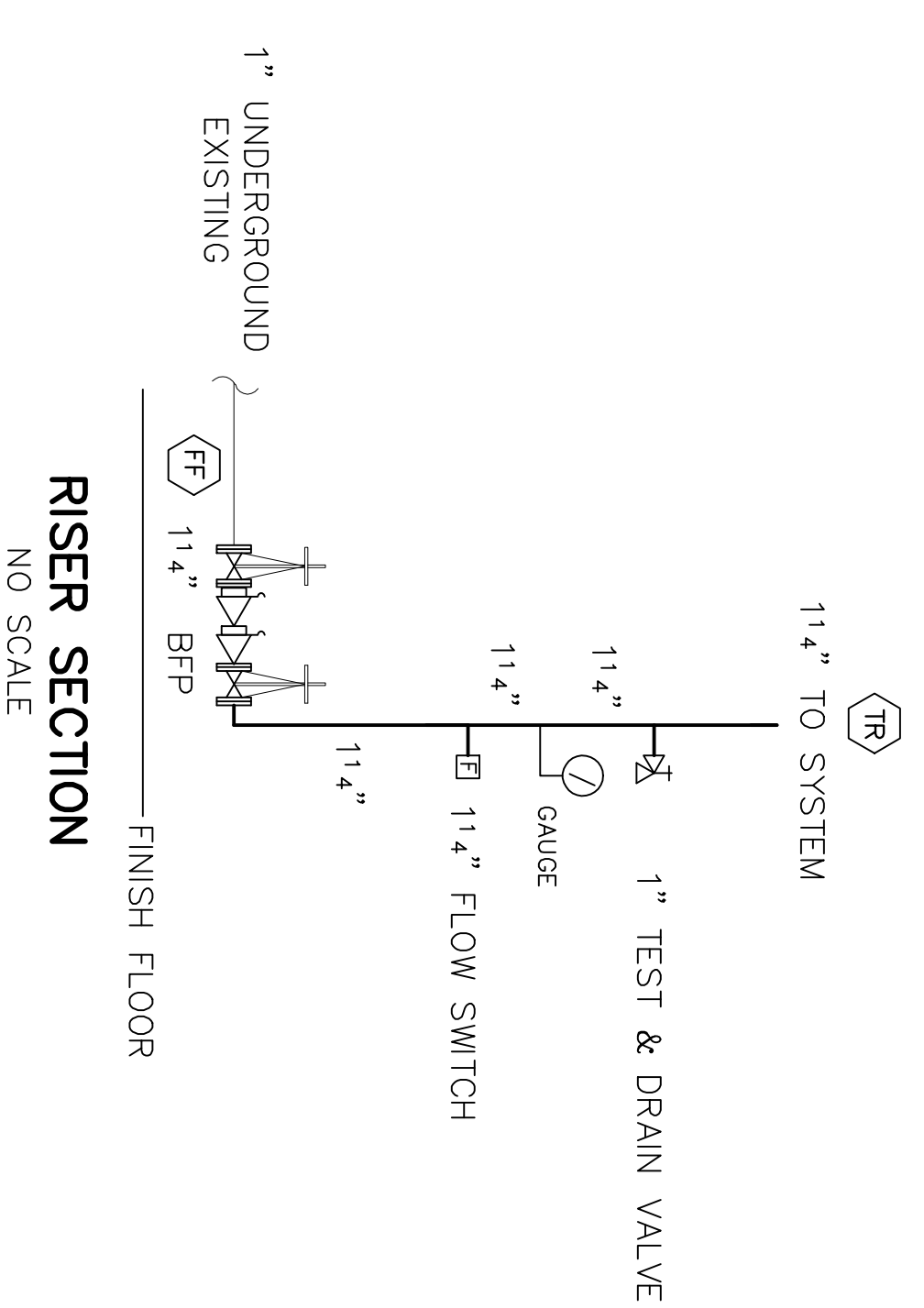
SECOND FLOOR



FIRST FLOOR



BASEMENT



RISER SECTION
NO SCALE

SYSTEM CLASSIFICATION

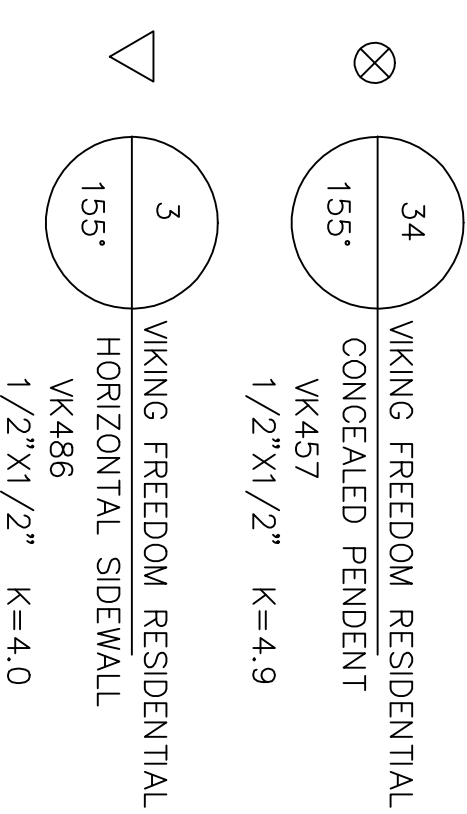
A WET PIPE NFPA #130 SPRINKLER SYSTEM TO BE INSTALLED IN ALL REQUIRED AREAS OF THE RESIDENCE TO MEET NFPA, STATE, AND CITY OF PORTLAND CODES.

LEGEND

- ⊗ CONCEALED WHITE RES. PENDENT
- ▽ RECESSED WHITE RES. SIDEWALL
- RISE OR DROP
- RISE BETWEEN FLOOR
- SCREWED COUPLING
- (X) HYDRAULIC REFERENCE POINT
- FF #=XX FINISH FLOOR TO CENTERLINE OF PIPE
- BU #=XX BOTTOM OF JOIST TO CENTERLINE OF PIPE

GENERAL NOTES

BUYER/OWNER TO MAINTAIN A TEMPERATURE OF ABOVE 40°F, INCLUDING AREAS PROPERLY INSULATED TO MAINTAIN 40°F, TO PREVENT THE SPRINKLER SYSTEM FROM FREEZING.
 ALL DIMENSIONS ARE CENTER TO CENTER U/N
 ALL PIPE TO SCH 40 BLACK STEEL
 ALL SCREWED FITTINGS TO BE STD. WT. C.I. BLACK U/N
 ALL DIMENSIONS FROM FACE OF STUDS



DEAN & ALLYN, INC.
 FIRE PROTECTION • SPECIAL HAZARD
 PO BOX 708 GAY LANE 04038
 (207)857-5646 FAX: (207)857-5647

DATE	3/13/24	BY	DANA A. STEWART
DESIGNED BY	DA	CHECKED BY	DA
APPROVED BY	DA	DATE	3/13/24
DATE	3/13/24	BY	DANA A. STEWART
DESIGNED BY	DA	CHECKED BY	DA
APPROVED BY	DA	DATE	3/13/24
DATE	3/13/24	BY	DANA A. STEWART
DESIGNED BY	DA	CHECKED BY	DA
APPROVED BY	DA	DATE	3/13/24

273 SPRING STREET
PORTLAND MAINE

REV. 0
DATE: 3/13/24
BY: DA
C121077