

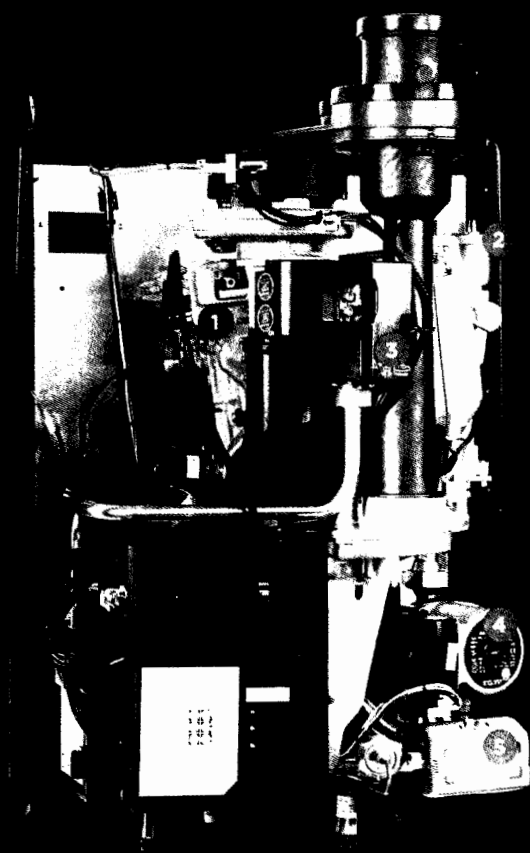


Specifically designed for multi-family applications with up to 1.5 baths, the new E50C delivers all the home heating and water heating customers need, while keeping installation and operation costs down and efficiency at its highest.

- Most efficient combi boiler on the market—95.6% AFUE
- Cost-effective, simplified installation—fewer components needed
- No primary/secondary piping or closely spaced tees required†
- No system pumps required—reduces install time and cost
- Fewer maintenance intervals required than the competition—
Inspection every two years or 4,000 hours; Service every four years or 8,000 hours
- 13,600 to 50,000 BTU heating load
- Proprietary stainless steel heat exchanger for unmatched performance and durability
- Greater control—system temperature adjustable in two degree increments
- Automatic de-aeration at start-up

E50C SPECIFICATION CHART

AFUE	95.6%
Heating Input	50,000 BTU
Minimum Input	13,600 BTU
Gas Pressure	3.0" W.C.
Gas Line Size**	1/2"
DHW at 75° Rise	2.1
Turn-Down Ratio	6.25:1
Low Loss Header Kit	As Accessory
Gas Type	NG (propane conversion kit)
Venting Type	2 Pipe/Concentric
High Altitude	10,000 ft
Canada Approved	Q1 2014



1. Stainless Steel Heat Exchanger
2. Air Vent
3. Gas Valve
4. Single-Speed Boiler Pump
5. Three-Way Motorized Valve

1. Stainless Steel Heat Exchanger
2. Air Vent
3. Gas Valve
4. Single-Speed Boiler Pump
5. Three-Way Motorized Valve