

DESIGNED BY: WFG  
 DRAWN BY: MJC  
 CHECKED BY: DNM  
 PROJECT: 21602.06

**REICHE ELEMENTARY SCHOOL  
 PORTLAND SCHOOL DEPARTMENT**  
 353 Cumberland Avenue  
 Portland, ME 04102

**REICHE ELEMENTARY  
 ELEVATOR ADDITION**  
 166 Brackett Street  
 Portland, ME 04102

**RAMP/  
 ELEVATED  
 PLATFORM  
 FRAMING  
 PLAN**

SCALE: AS NOTED  
 DATE: 04-26-2016

DWG.: **SF401**

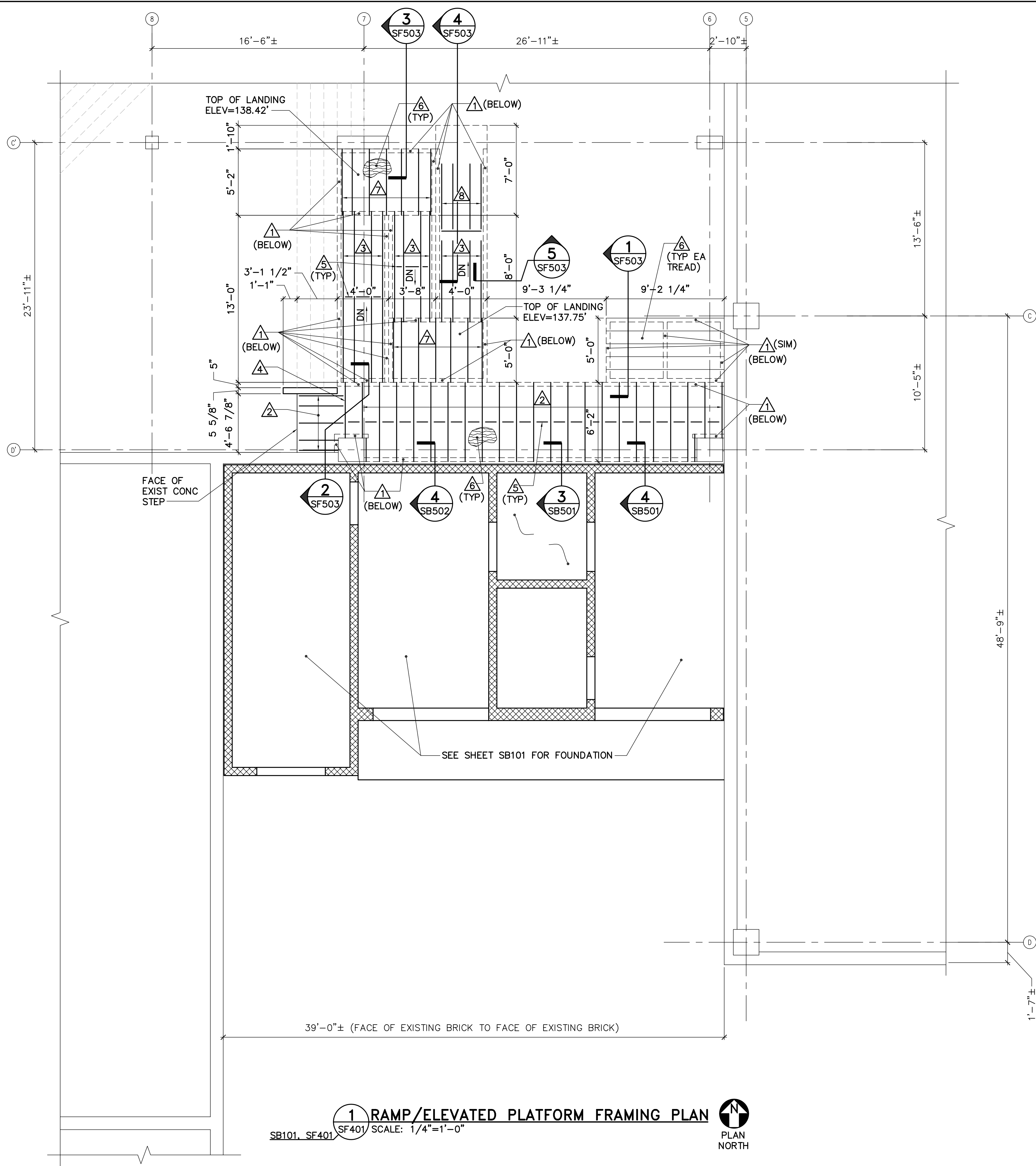
SHEET: **14** OF **40**

**GENERAL SHEET NOTES:**

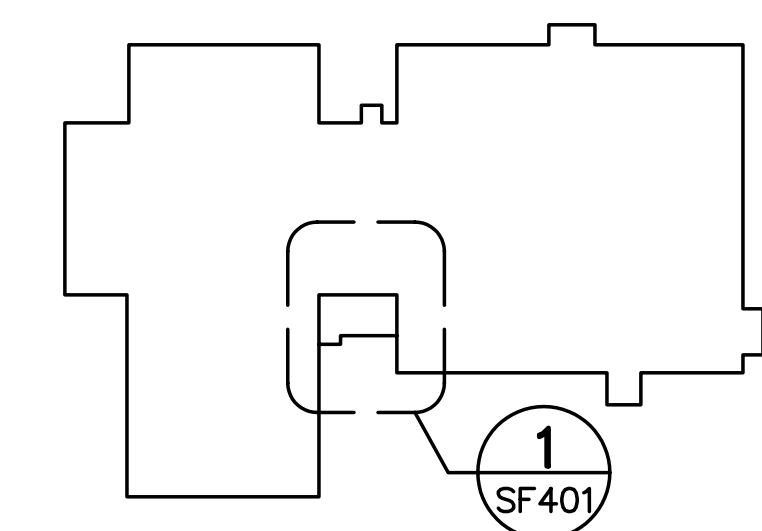
- A PORTION OF THE NEW RAMP AND LANDING WILL BE CONSTRUCTED OVER THE TOP OF THE EXISTING REINFORCED CONCRETE STAIRS (ADJUST FRAMING AS REQUIRED).
- PROVIDE WEB STIFFENERS AT EACH SUPPORT FOR 600 S 162-43 FLOOR JOISTS AND STAIR TREADS.

**KEYNOTES: (THIS SHEET ONLY)**

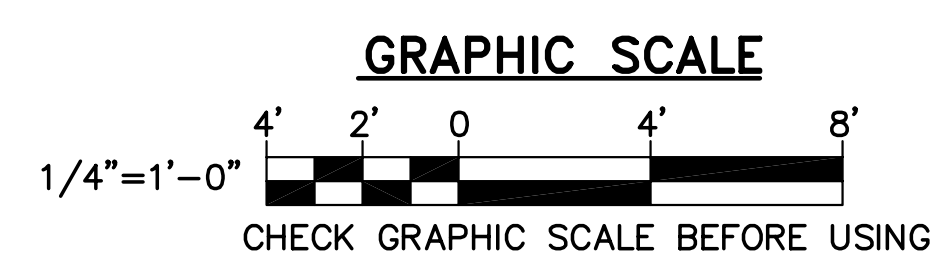
- 1 362 S 162-33 COLD-FORMED STEEL STUDS SPACED 1'-4" ON-CENTER.
- 2 600 S 162-43 COLD-FORMED STEEL JOISTS SPACED 1'-4" ON-CENTER.
- 3 800 S 162-97 COLD-FORMED STEEL JOISTS (SLOPED) SPACED 1'-4" ON-CENTER AT RAMPS.
- 4 (2) 600 S 162-43 COLD-FORMED STEEL JOISTS NESTED WITH (2) 600 T 125-43 TRACKS.
- 5 FULL DEPTH COLD-FORMED STEEL BLOCKING MATCHING JOIST SIZE.
- 6 25/32" APA RATED STRUCTURAL 1 PLYWOOD SHEATHING. PLYWOOD SHALL BE FIRE-RETARDANT TREATED. APPLY 1/4" THICK CEMENT BOARD OVER PLYWOOD SUBFLOOR.
- 7 800 S 162-97 COLD-FORMED STEEL JOISTS SPACED 1'-4" ON-CENTER AT LANDINGS.
- 8 2x8 WOOD JOISTS CUT TO MATCH RAMP SLOPE AND SPACED 1'-4" ON-CENTER.



**1 RAMP/ELEVATED PLATFORM FRAMING PLAN**  
 SB101, SF401 SCALE: 1/4"=1'-0"  
 PLAN NORTH



**KEY PLAN**  
 NOT TO SCALE  
 PLAN NORTH



25 Apr, 2016 - 2:11pm  
 C:\office\21602.06-SF401.dwg