

DESIGNED BY: WFG  
 DRAWN BY: MJC  
 CHECKED BY: DNM  
 PROJECT: 21602.06

**REICHE ELEMENTARY SCHOOL  
 PORTLAND SCHOOL DEPARTMENT**

**REICHE ELEMENTARY  
 ELEVATOR ADDITION**  
 166 Brackett Street  
 Portland, ME 04102

**UPPER  
 ROOF  
 FRAMING  
 PLAN**

SCALE: AS NOTED  
 DATE: 04-26-2016

DWG.: **SF102**

SHEET: **12** OF **40**

**GENERAL SHEET NOTES:**

- REFER TO SHEET S-001 FOR BEAM BEARING PLATE SCHEDULE.
- TOP OF STEEL ELEVATION = 164.17' UNLESS NOTED OTHERWISE.

**EXISTING KEYNOTES: (THIS SHEET ONLY)**

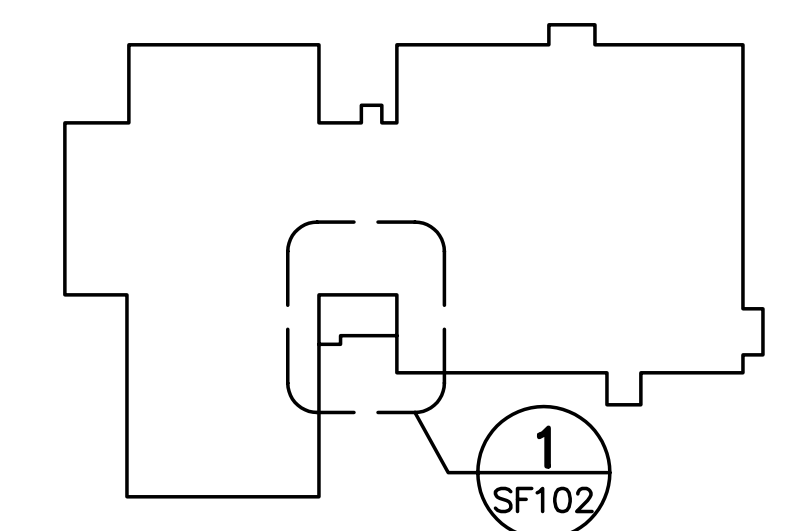
- △ EXISTING 2"± THICK GYPSUM DECK SUPPORTED BY #178 BULB TEES SPACED 2'-8"± ON-CENTER.
- △ EXISTING REINFORCED CONCRETE 2-WAY WAFFLE SLAB.

**KEYNOTES: (THIS SHEET ONLY)**

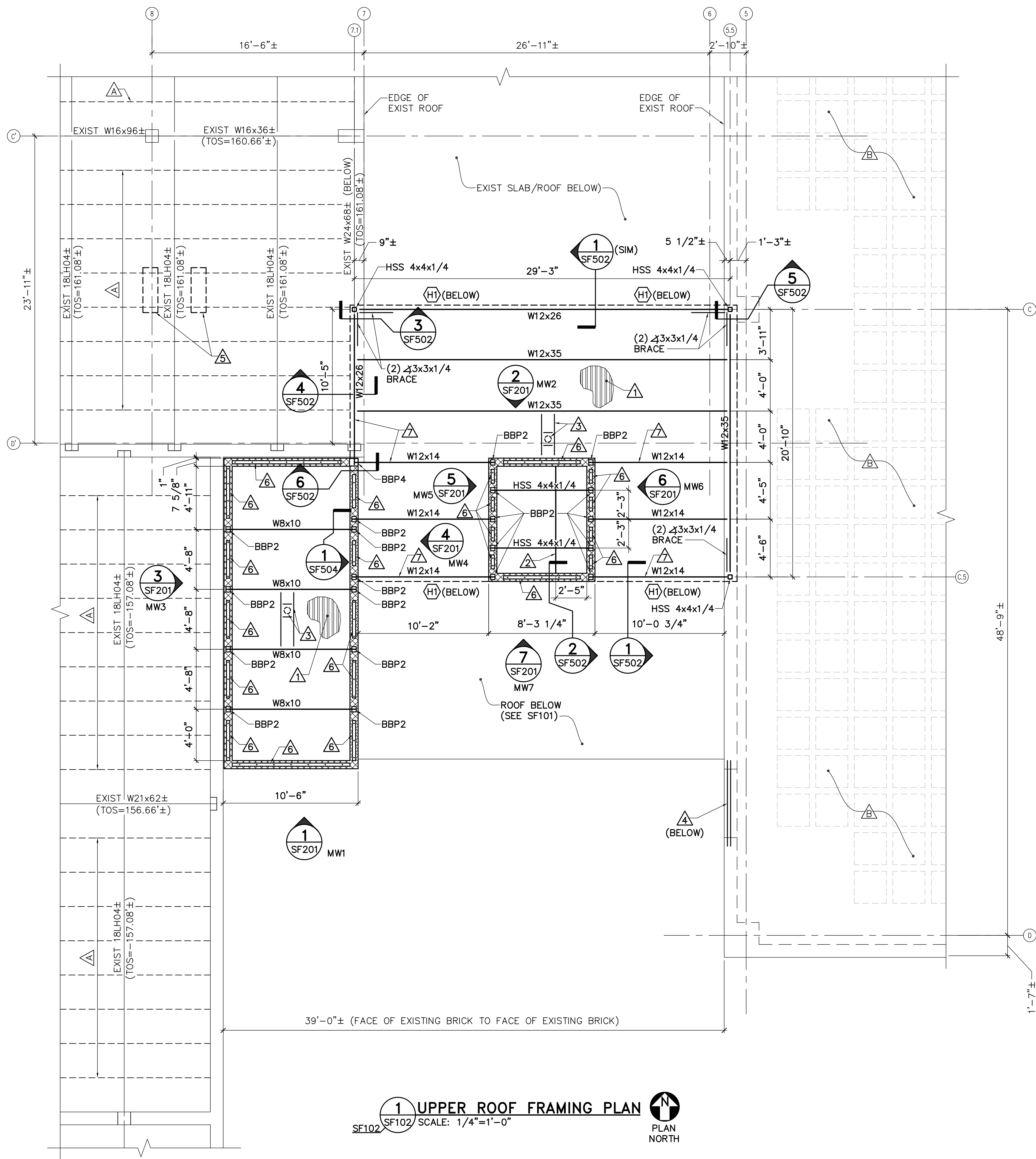
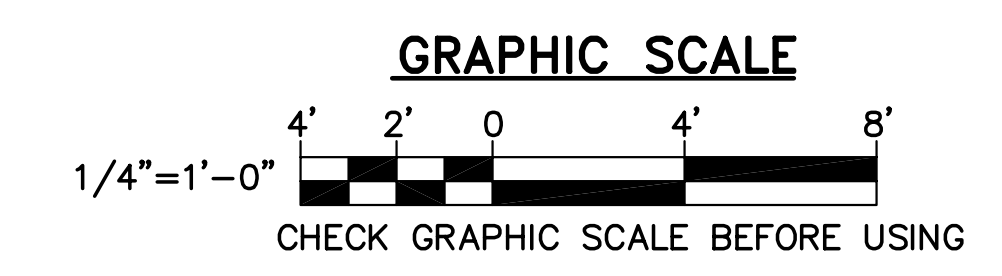
- △ 1-1/2"x18GA GALVANIZED STEEL ROOF DECK.
- △ W8x15 HOIST BEAM (TOS ELEV=163.51'). COORDINATE EXACT LOCATION WITH ELEVATOR MANUFACTURER.
- △ ROOF DRAIN LOCATION. PROVIDE 4x3x1/4 SUPPLEMENTAL FRAMING TO SUPPORT ROOF DECK EDGE.
- △ (2) GALVANIZED 4x3-1/2x5/16 (LLV) STEEL LINTELS ABOVE RELOCATED LOUVER. REFER TO DETAIL 6/SF503.
- △ LOCATE CU-1 AND CU-2 (SHOWN BY DASHED OUTLINE) SO THAT UNITS EVENLY STRADDLE THE EXISTING STEEL BULB TEES AND SO THAT ONE UNIT IS ON EITHER SIDE OF THE EXISTING 18LH04± STEEL JOIST.
- △ CONTINUOUS 3/8"x3" WIDE STEEL PLATE WITH 1/2" DIAMETER x 3-1/2" LONG HEADED ANCHORS SPACED 1'-4" ON-CENTER.
- △ SEISMIC LOAD RESISTING COLLECTOR ELEMENT.

| COLD-FORMED HEADER |                  |                                      |
|--------------------|------------------|--------------------------------------|
| DESIGNATION        | JAMB             | HEADER                               |
| (H)                | (2) 600 S 162-43 | (1) 600 S 162-43<br>(1) 600 T 125-43 |

NOTE:  
REFER TO DETAIL 3/SF504.



**KEY PLAN**  
 NOT TO SCALE  
 PLAN NORTH



25 Apr, 2016 - 2:08pm  
 C:\office\21602.06-SF102.dwg