

DESIGNED BY: WFG
 DRAWN BY: MJC
 CHECKED BY: DNM
 PROJECT: 21602.06

**REICHE ELEMENTARY SCHOOL
 PORTLAND SCHOOL DEPARTMENT**

**REICHE ELEMENTARY
 ELEVATOR ADDITION**

353 Cumberland Avenue
 Portland, ME 04102

166 Brackett Street
 Portland, ME 04102

FOUNDATION PLAN

SCALE: AS NOTED
 DATE: 04-26-2016

DWG.: **SB101**

SHEET: **8** OF **40**

GENERAL SHEET NOTES:

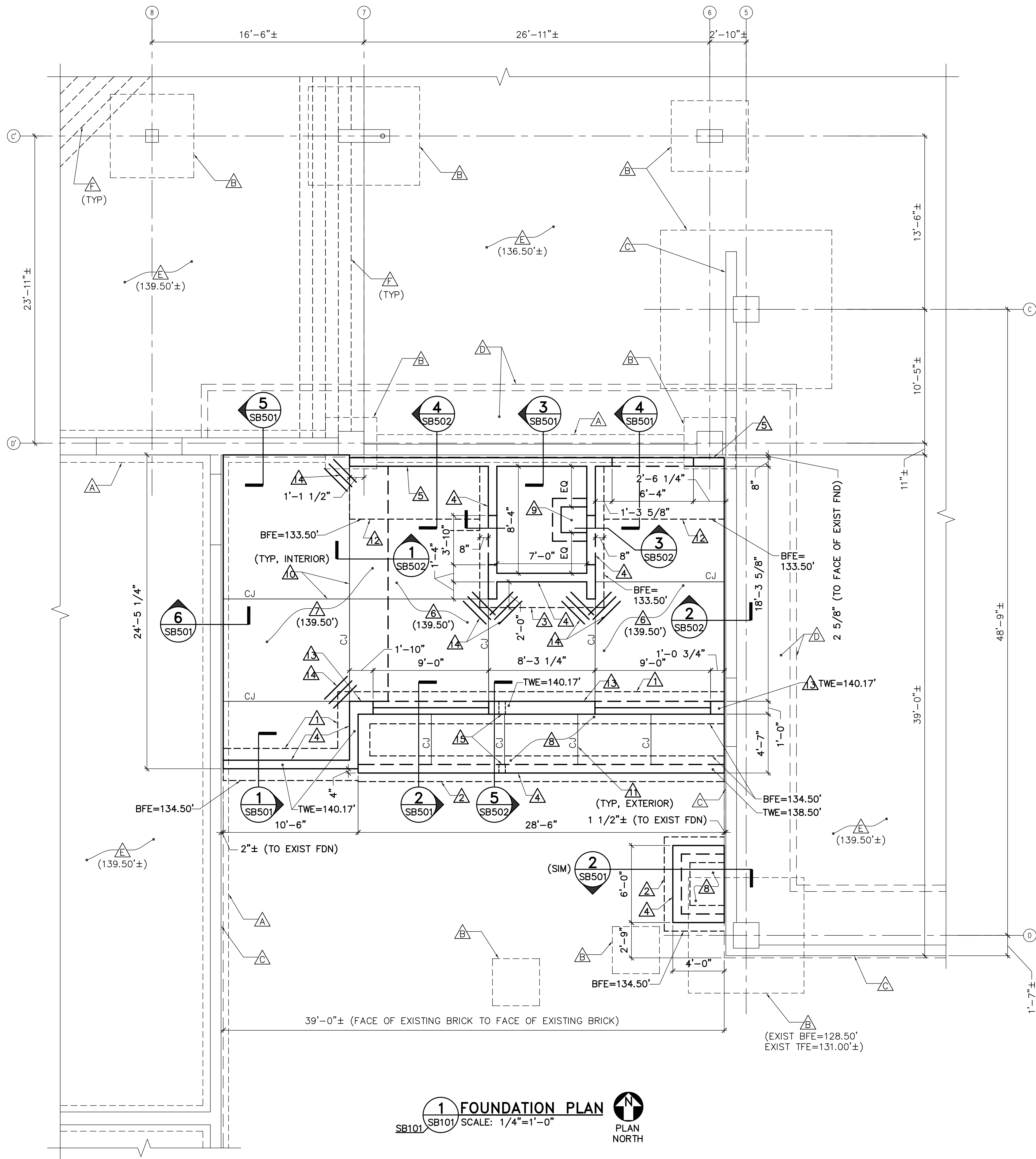
- REFER TO DETAIL 1/SF401 FOR INTERIOR CORRIDOR/RAMP FRAMING.
- PROVIDE CONCRETE HOUSEKEEPING PAD IN ELEVATOR MACHINE ROOM IN ACCORDANCE WITH ELEVATOR MANUFACTURER'S REQUIREMENTS. REFER TO DETAIL 6/SB502.

EXISTING KEYNOTES: (THIS SHEET ONLY)

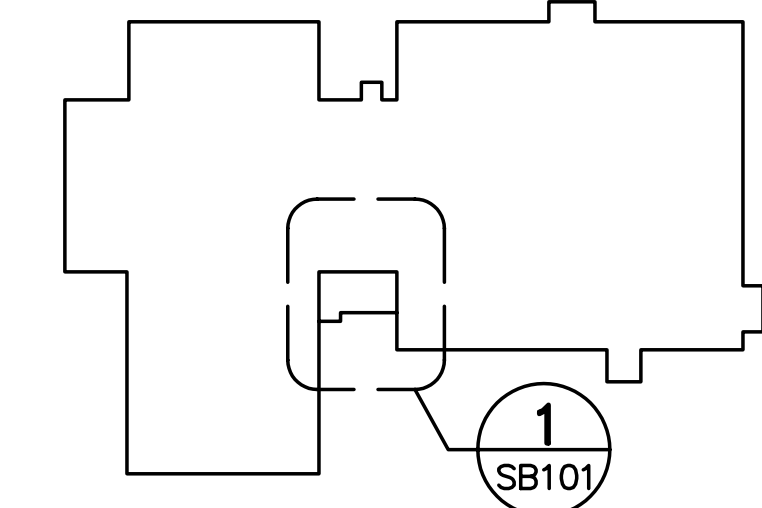
- △ A EXISTING CONTINUOUS 1'-0" x 2'-0" ± REINFORCED CONCRETE FOOTING.
- △ B EXISTING REINFORCED CONCRETE COLUMN FOOTING (SIZES VARY).
- △ C EXISTING REINFORCED CONCRETE FOUNDATION WALLS.
- △ D EXISTING REINFORCED CONCRETE TRENCH BELOW SLAB-ON-GRADE.
- △ E EXISTING 4" ± THICK REINFORCED CONCRETE SLAB-ON-GRADE. TOP OF SLAB ELEVATION AS NOTED WITH KEYNOTE.
- △ F EXISTING REINFORCED CONCRETE STAIRS.

KEYNOTES: (THIS SHEET ONLY)

- △ 1 1'-0" x 2'-6" CONTINUOUS REINFORCED CONCRETE FOOTING.
- △ 2 1'-0" x 2'-0" CONTINUOUS REINFORCED CONCRETE FOOTING.
- △ 3 1'-0" THICK REINFORCED CONCRETE FOOTING WITH #5'S AT 1'-0" ON-CENTER EACH WAY.
- △ 4 8" REINFORCED CONCRETE FOUNDATION WALL.
- △ 5 8" REINFORCED CONCRETE RETAINING WALL.
- △ 6 8" THICK REINFORCED CONCRETE SLAB-ON-GRADE.
- △ 7 1'-2" THICK REINFORCED CONCRETE SLAB-ON-GRADE.
- △ 8 6" THICK REINFORCED CONCRETE SLAB-ON-GRADE WITH BROOM FINISH.
- △ 9 2'-0" x 2'-0" x 2'-0" SUMP PIT WITH 1" GALVANIZED STEEL GRATING COVER.
- △ 10 1/8" WIDE x 2" DEEP SAWCUT CONTROL JOINT.
- △ 11 1/8" WIDE x 1-1/2" DEEP SAWCUT CONTROL JOINT.
- △ 12 1'-0" x 5'-0" CONTINUOUS REINFORCED CONCRETE FOOTING.
- △ 13 1'-0" REINFORCED CONCRETE FOUNDATION WALL.
- △ 14 (3) #5 DOWELS, 2'-6" LONG, SPACED 6" ON-CENTER LOCATED 6" FROM EDGE OF RE-ENTRANT CORNER.
- △ 15 PIPE SLEEVE OR CORE DRILL LOCATION FOR 6" DIAMETER STORM DRAIN LINE. COORDINATE LOCATION AND ELEVATION WITH SHEETS CS101 AND P-101.



1 FOUNDATION PLAN
 SB101 SCALE: 1/4"=1'-0"
 PLAN NORTH



KEY PLAN
 NOT TO SCALE
 PLAN NORTH

