

1 ROOF PLUMBING PART PLAN
P-102 SCALE: 1/8"=1'-0"



PUMP SCHEDULE									
UNIT NO	SERVES	TYPE	GPM	TOTAL HEAD	MOTOR DATA			BASIS OF DESIGN	NOTES
					HP	RPM	VOLTS/PHASE		
SP-1	ELEVATOR PIT	SUMP	50	25'	1.0	1725	115/1	STANCOR SE-100	1,2,3,4

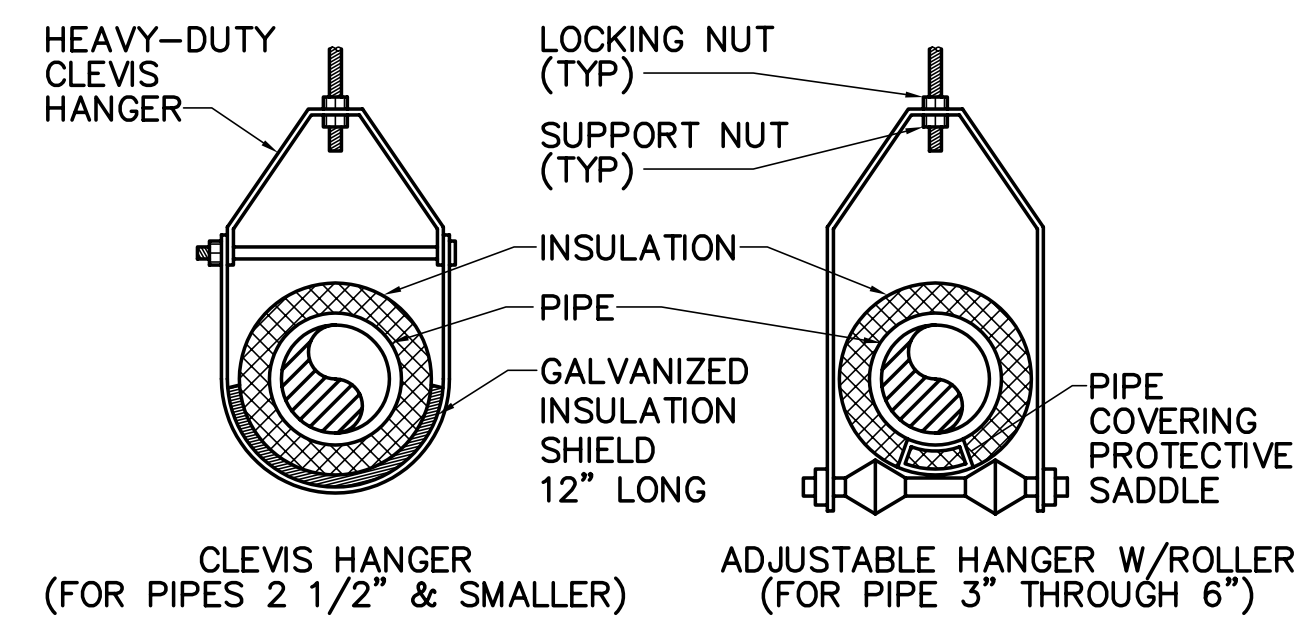
NOTES: 1. FLOAT OPERATED.
2. PROVIDE HIGH LEVEL ALARM KIT THAT INCLUDES SILENCE AND TEST BUTTONS AND A FLOAT SWITCH.
3. PROVIDE ALARM HORN AND LIGHT.
4. OIL MINDER SYSTEM.

DRAIN SCHEDULE						
UNIT NO	TYPE	DESCRIPTION	SIZE	STRAINER DIMENSIONS	BASIS OF DESIGN	NOTES
RD-1	ROOF DRAIN	STANDARD ROOF DRAIN	AS NOTED ON PLAN	12" Ø DOME	ZURN Z121	

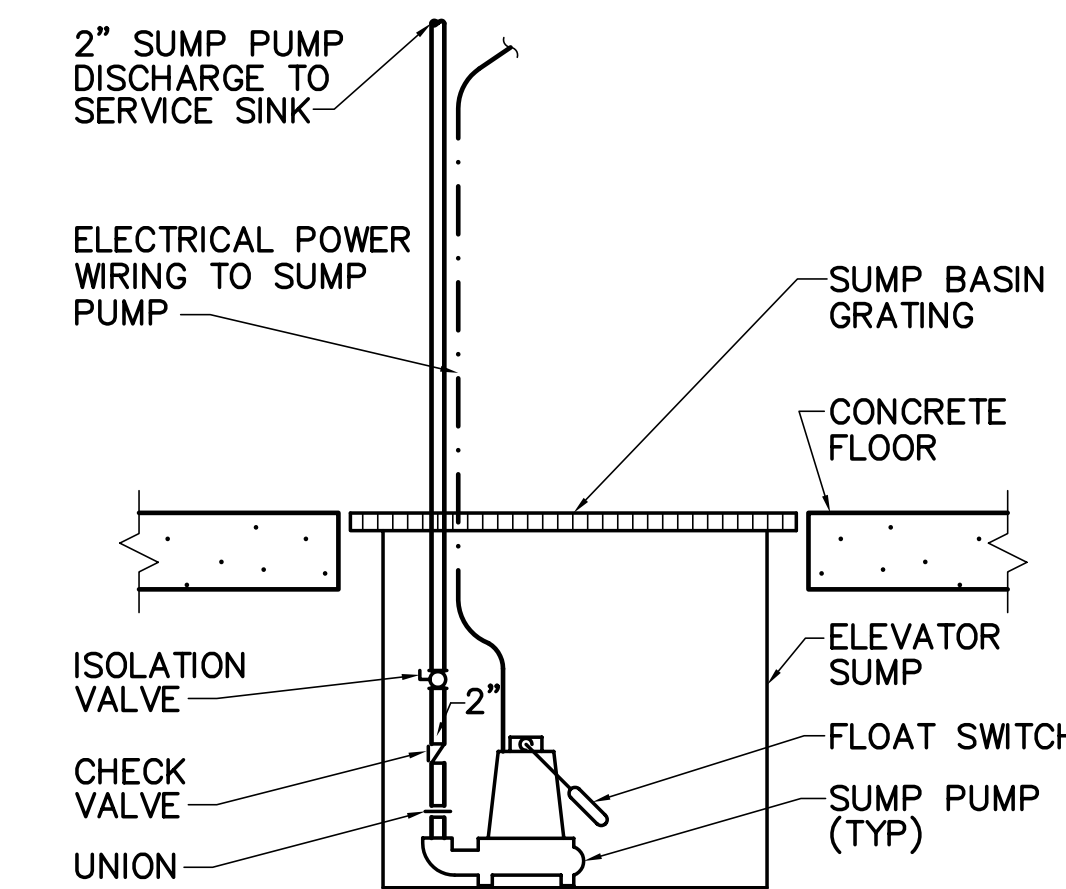
NOTES:

GENERAL NOTE

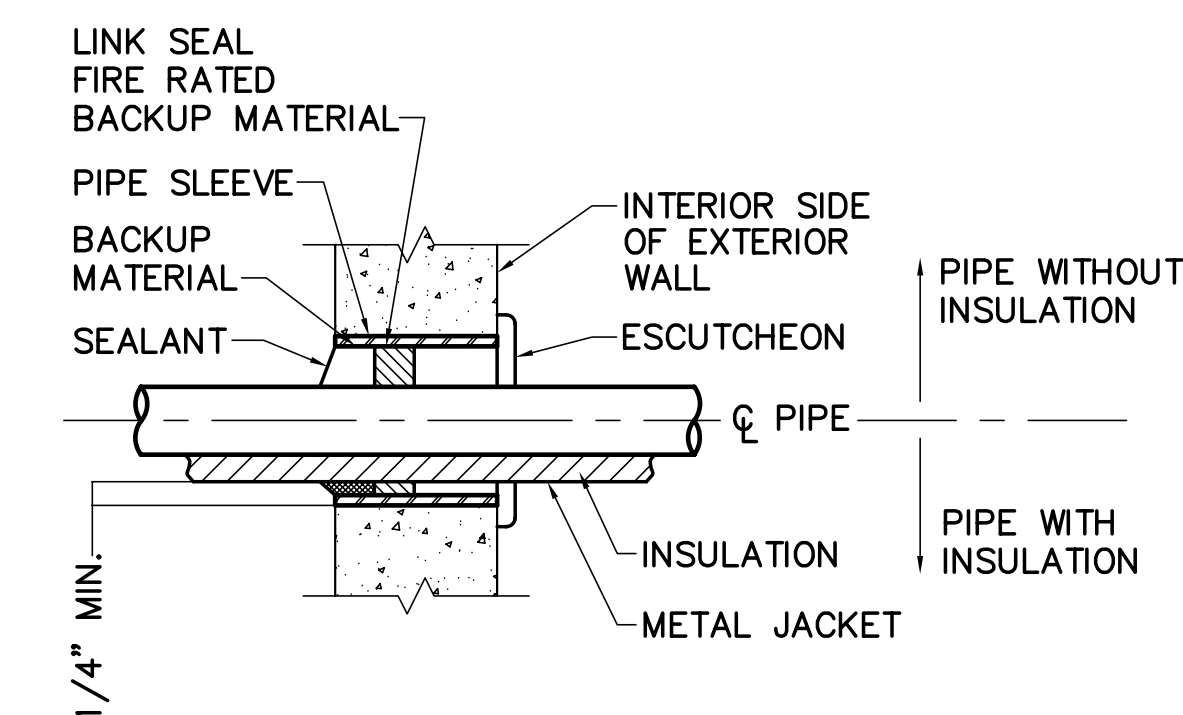
NOTE ON BASIS OF DESIGN
PRODUCTS OF OTHER MANUFACTURERS ARE ACCEPTABLE IF THEY MEET THE OPERATIONAL REQUIREMENTS INDICATED. ANY ADJUSTMENTS TO DUCTING, PIPING, WIRING OR CONFIGURATION DUE TO THE SELECTION OF A MANUFACTURER OTHER THAN THAT LISTED AS THE BASIS OF DESIGN WILL BE ACCOMPLISHED BY THE CONTRACTOR AT NO ADDITIONAL EXPENSE TO THE GOVERNMENT.



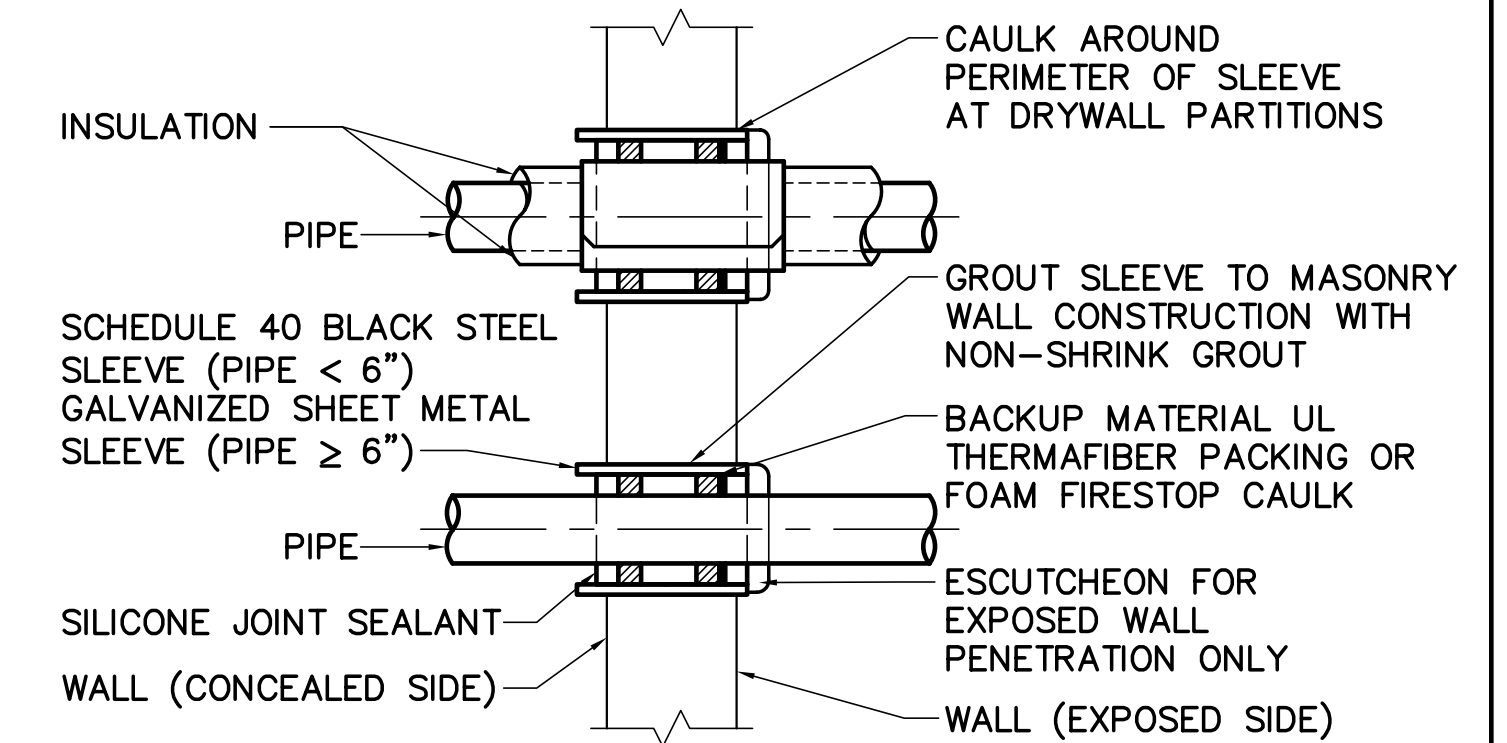
1 PIPE HANGER ATTACHMENT DETAILS
P-102 NOT TO SCALE



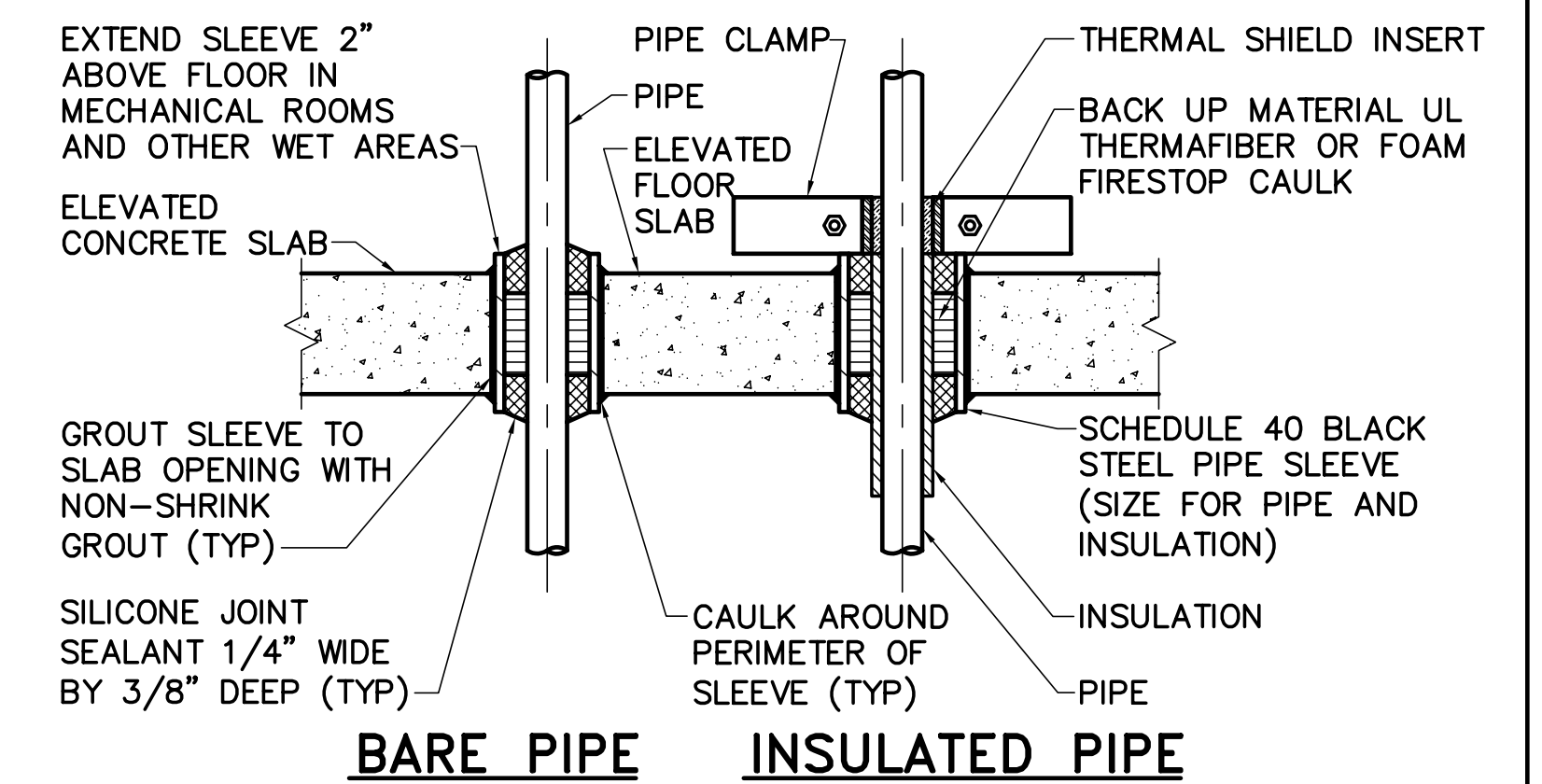
3 SUMP PUMP DETAIL
P-101 NOT TO SCALE



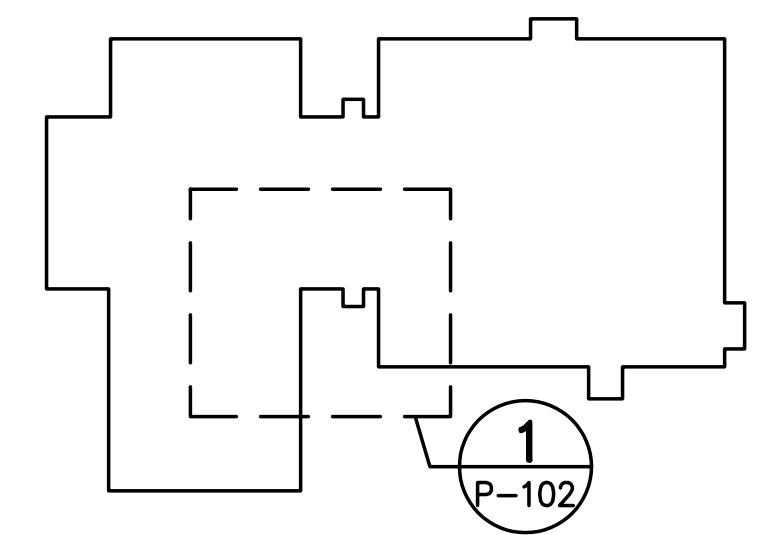
5 PIPE THROUGH UNDERGROUND WALL
P-102 NOT TO SCALE



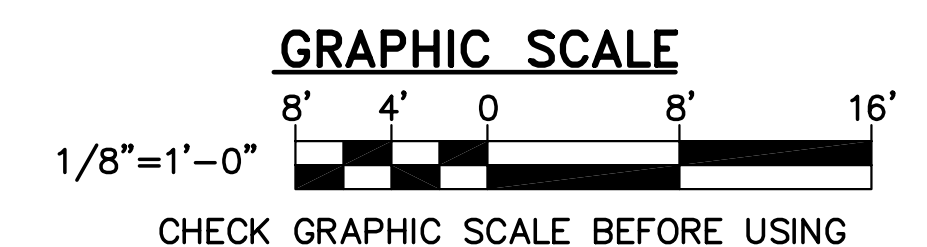
2 PIPE SLEEVE THRU WALL
P-102 NOT TO SCALE



4 PIPE SLEEVE THRU ELEVATED FLOOR
P-102 NOT TO SCALE



KEY PLAN
NOT TO SCALE PLAN NORTH



DRAWING NOTES

- REFER TO GENERAL NOTES ON P-001 FOR REQUIRED PIPE SLOPES.
- FOR ROOF DRAIN SIZES REFER TO SHEET P-101.
- FOR SITE STORMWATER SYSTEMS REFER TO CS101.



DESIGNED BY: DMA
DRAWN BY: RDA
CHECKED BY: MSA
PROJECT: 21602.06

**REICHE ELEMENTARY SCHOOL
PORTLAND SCHOOL DEPARTMENT**
353 Cumberland Avenue
Portland, ME 04102

**REICHE ELEMENTARY
ELEVATOR ADDITION**
166 Brackett Street
Portland, ME 04102

ROOF PLUMBING PART PLAN, DETAILS AND SCHEDULE

SCALE: AS NOTED

DATE: 04-29-2016

DWG.: **P-102**

SHEET: **36** OF **40**