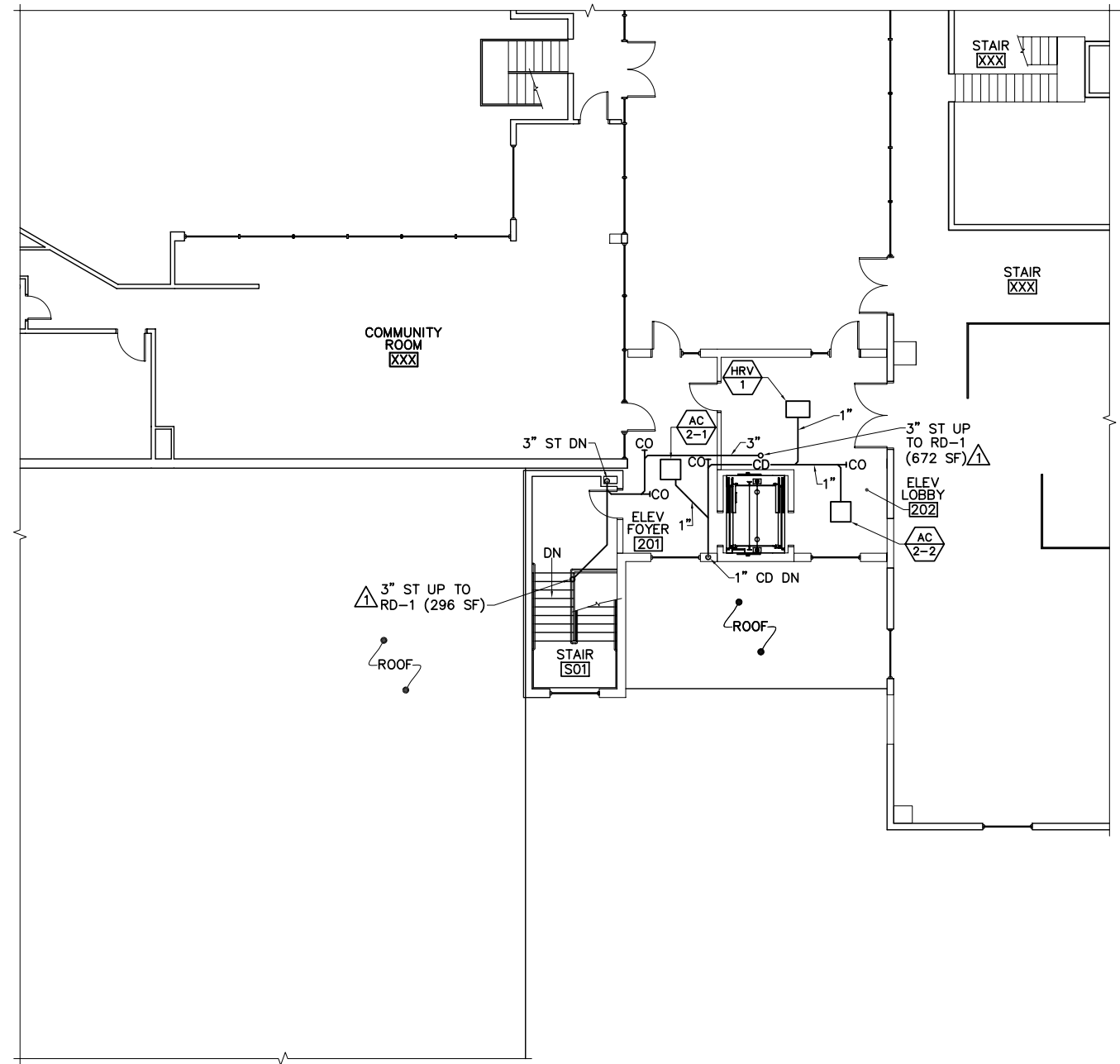


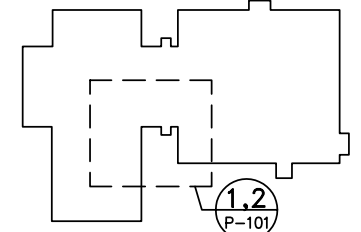
1 FIRST FLOOR PLUMBING PART PLAN
 P-101 SCALE: 1/8"=1'-0"
 PLAN NORTH



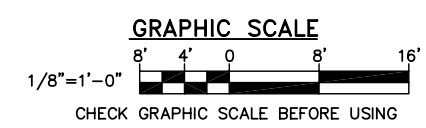
2 SECOND FLOOR PLUMBING PART PLAN
 P-101 SCALE: 1/8"=1'-0"
 PLAN NORTH

- DRAWING NOTES**
- REFER TO GENERAL NOTES ON P-001 FOR REQUIRED PIPE SLOPES.
 - FINISHED FLOOR ELEVATION: 139.5' UNLESS NOTED OTHERWISE.

- DRAWING KEYNOTES**
- PROVIDE ROOF DRAIN. COORDINATE WITH ROOF CONSTRUCTION.
 - PROVIDE CLEANOUT NEAR THE BASE OF THE STORM DRAIN RISER. PROVIDE PAINTABLE CLEANOUT COVER.



KEY PLAN
 NOT TO SCALE
 PLAN NORTH



DESIGNED BY: DMA
 DRAWN BY: RDA
 CHECKED BY: MSA
 PROJECT: 21602.06

**REICHE ELEMENTARY SCHOOL
 PORTLAND SCHOOL DEPARTMENT**
 353 Cumberland Avenue
 Portland, ME 04102

**REICHE ELEMENTARY
 ELEVATOR ADDITION**
 166 Brackett Street
 Portland, ME 04102

**FIRST AND SECOND FLOOR
 PLUMBING PART PLANS**

SCALE: AS NOTED
 DATE: 04-29-2016

DWG.: **P-101**

SHEET: **35** OF **40**