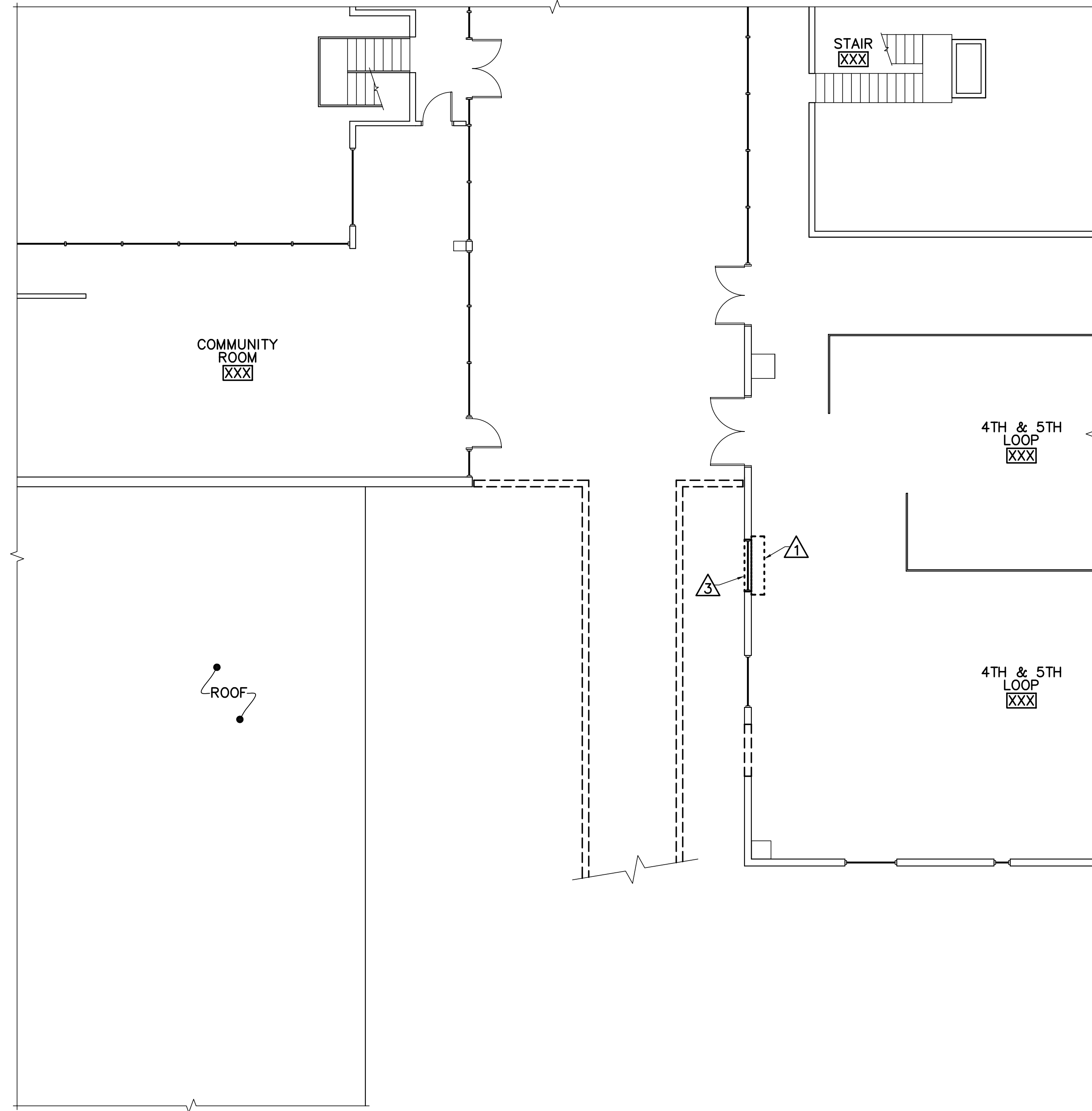


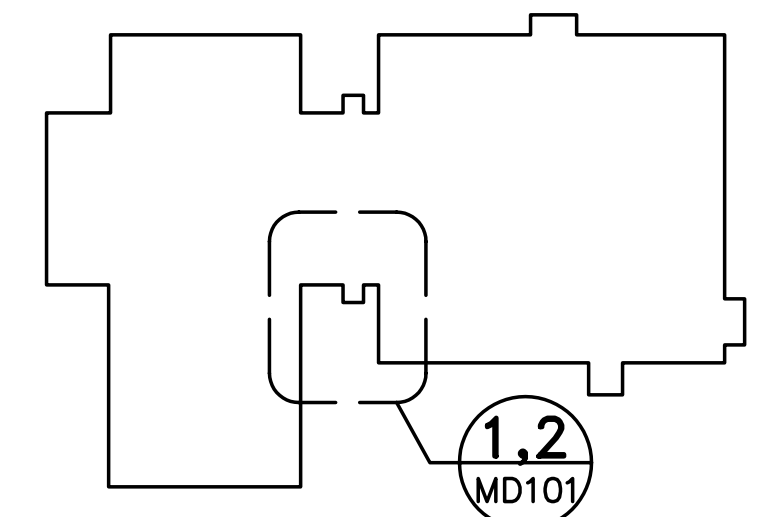
1 FIRST FLOOR MECHANICAL REMOVALS PART PLAN
 MD101 SCALE: 1/8"=1'-0" PLAN NORTH



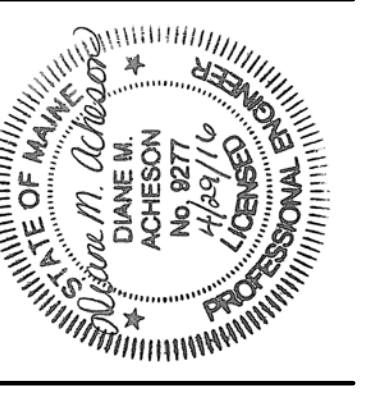
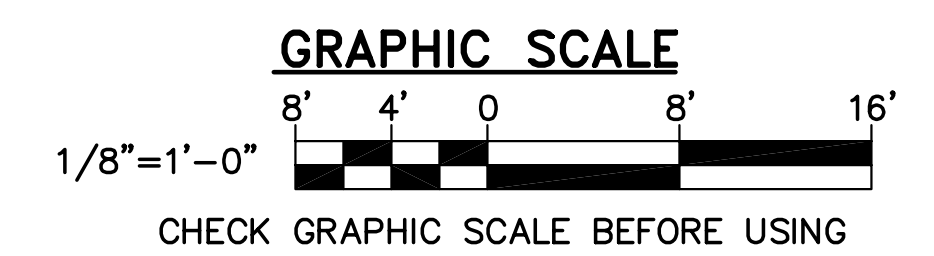
2 SECOND FLOOR MECHANICAL REMOVALS PART PLAN
 MD101 SCALE: 1/8"=1'-0" PLAN NORTH

DRAWING KEYNOTES

- ① REMOVE UNIT VENTILATOR AND CONTROLS FOR RELOCATION.
- ② REMOVE HWS & HWR PIPING FROM RISER TO UNIT VENTILATOR ON FIRST AND SECOND FLOOR AND CAP PIPING AT RISER. EXISTING HWS AND HWR RISER SHALL REMAIN.
- ③ REMOVE LOUVER FOR RELOCATION.



KEY PLAN
 NOT TO SCALE PLAN NORTH



DESIGNED BY: DMA
 DRAWN BY: RDA
 CHECKED BY: MSA
 PROJECT: 21602.06

**REICHE ELEMENTARY SCHOOL
 PORTLAND SCHOOL DEPARTMENT**
 353 Cumberland Avenue
 Portland, ME 04102

**REICHE ELEMENTARY
 ELEVATOR ADDITION**
 166 Brackett Street
 Portland, ME 04102

FIRST AND SECOND FLOOR MECHANICAL REMOVALS PART PLANS

SCALE: AS NOTED
 DATE: 04-29-2016