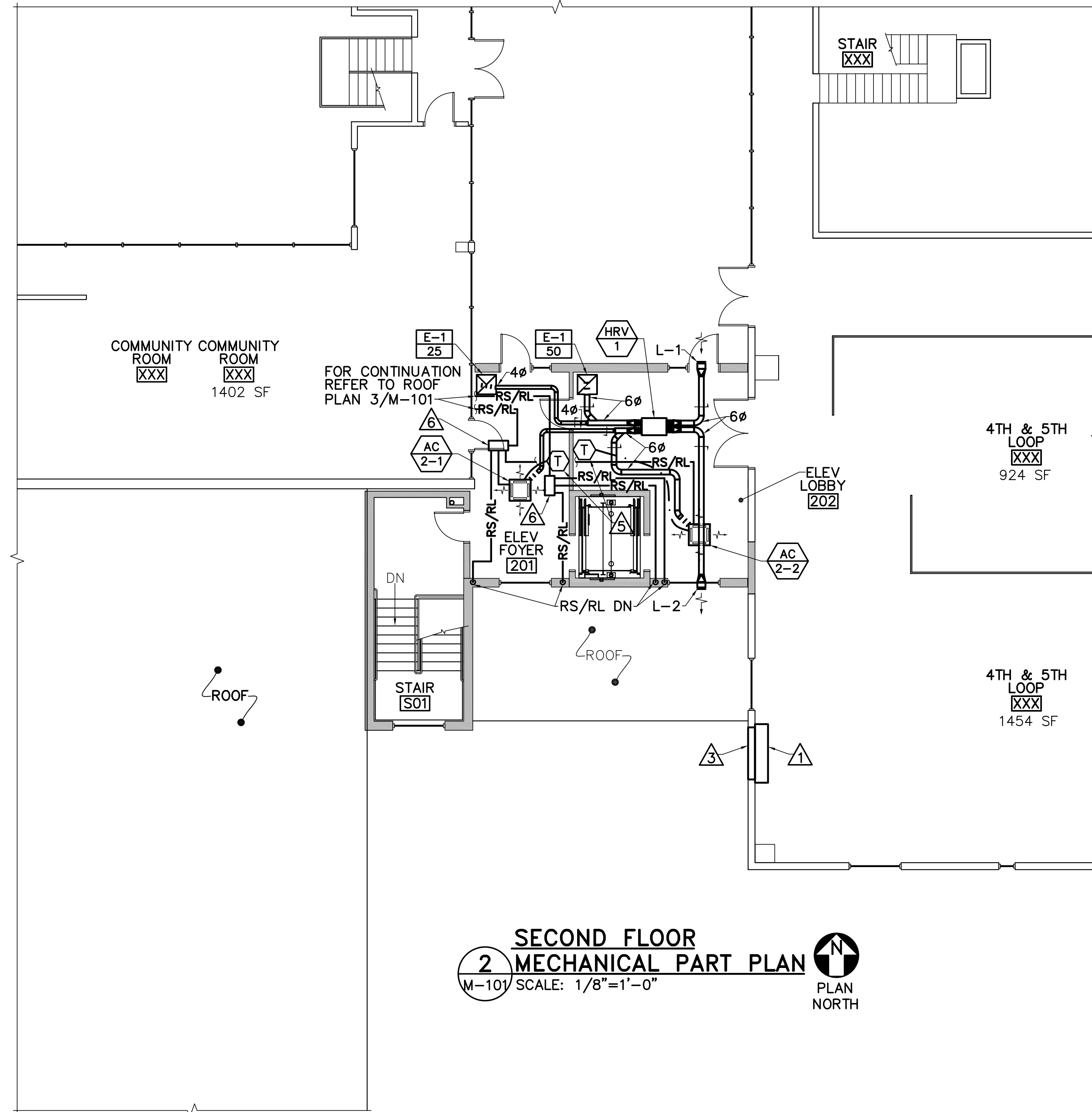


1 FIRST FLOOR MECHANICAL PART PLAN
 M-101 SCALE: 1/8"=1'-0"
 PLAN NORTH



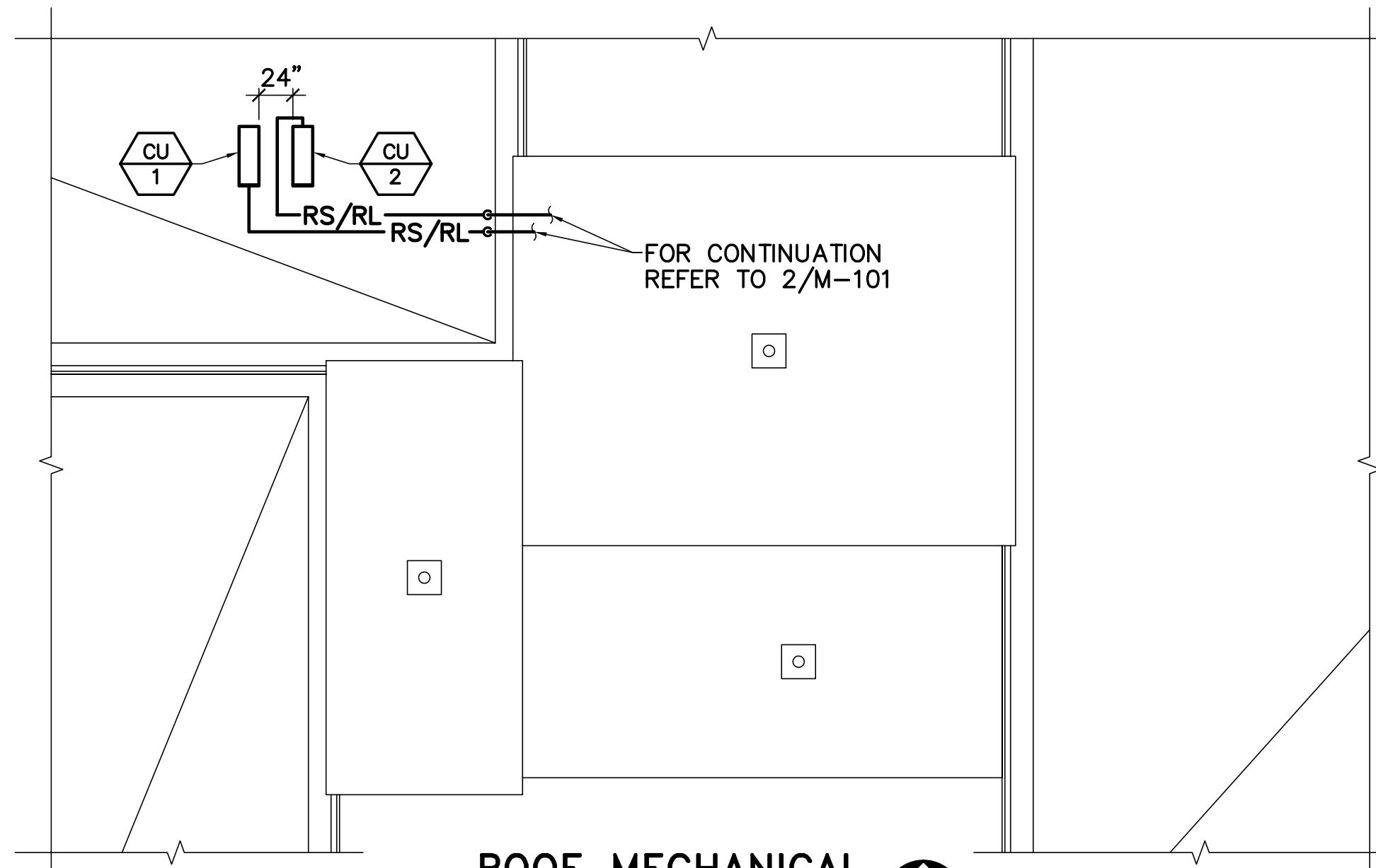
2 SECOND FLOOR MECHANICAL PART PLAN
 M-101 SCALE: 1/8"=1'-0"
 PLAN NORTH

DRAWING NOTES

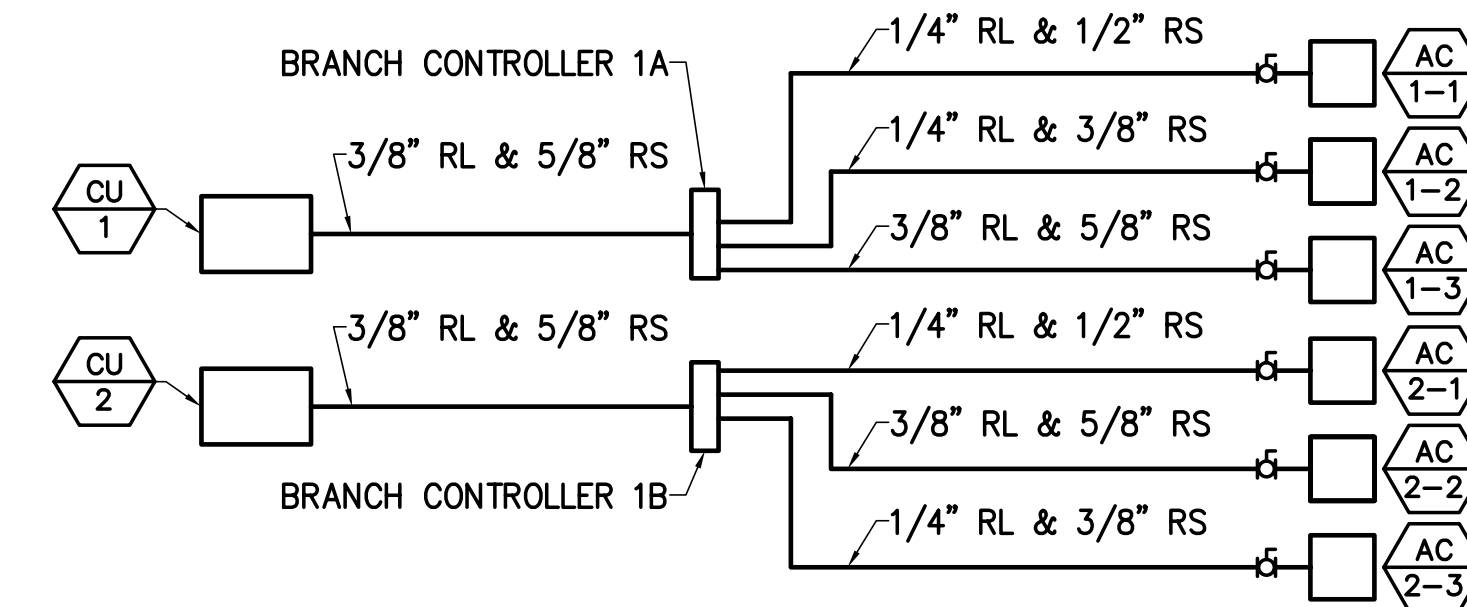
1. INSTALL EQUIPMENT TO ALLOW MAINTENANCE ACCESS AS REQUIRED BY EQUIPMENT MANUFACTURER'S WRITTEN INSTRUCTIONS. PROVIDE MINIMUM 12" MAINTENANCE CLEARANCE AT VALVES AND OTHER ACCESS LOCATIONS.
2. PIPING PENETRATIONS THROUGH FIRE WALLS/FLOORS/BARRIERS SHALL BE SEALED WITH FIRESTOPPING ACCORDING TO DIVISION 7 REQUIREMENTS.
3. FOR REFRIGERANT PIPE SIZES REFER TO REFRIGERANT PIPING SCHEMATIC.
4. ALL AC UNITS SHALL HAVE REFRIGERANT ISOLATION VALVES.
5. FOR CONDENSATE DRAINS REFER TO P-101.

DRAWING KEYNOTES

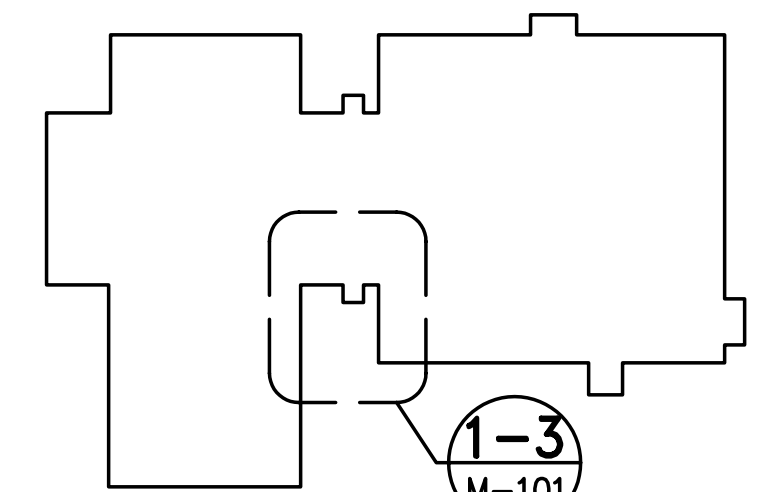
1. REINSTALL EXISTING UNIT VENTILATOR AND CONTROLS.
2. PROVIDE HWS & HWR RISER. PROVIDE SHUT-OFF VALVES ON HWS & HWR AND BALANCING VALVE ON HWR TO EACH TERMINAL UNIT. CONNECT PIPING TO MAINS IN TRENCH UP TO UNIT VENTILATOR ON SECOND FLOOR.
3. REINSTALL EXISTING LOUVER.
4. PROVIDE 1" DIAMETER DRILLED HOLE THROUGH 4" REINFORCED CONCRETE SLAB FOR PIPE RISER. LOCATE DRILLED HOLE IN MIDDLE OF SLAB.
5. PROVIDE CLEAR LOCKABLE THERMOSTAT GUARD.
6. LOCATE VRF SYSTEM MANUFACTURER'S REFRIGERANT BRANCH CIRCUIT CONTROLLER ABOVE SUSPENDED TILE CEILING.



3 ROOF MECHANICAL PART PLAN
 M-101 SCALE: 1/8"=1'-0"
 PLAN NORTH



4 REFRIGERANT PIPING SCHEMATIC
 M-101 NOT TO SCALE



KEY PLAN
 NOT TO SCALE
 PLAN NORTH

