

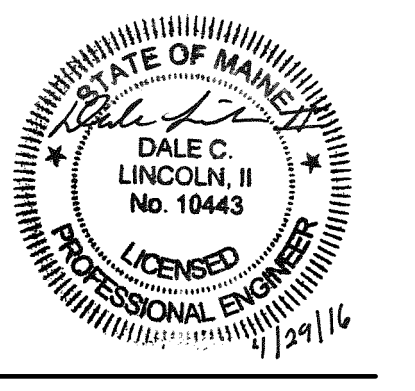
**1 PARTIAL FIRST FLOOR ELECTRICAL LIGHTING AND FIRE ALARM PLAN**  
 EL101 SCALE: 1/8"=1'-0" PLAN NORTH

**2 PARTIAL SECOND FLOOR ELECTRICAL LIGHTING AND FIRE ALARM PLAN**  
 EL101 SCALE: 1/8"=1'-0" PLAN NORTH

- DRAWING KEYNOTES**
- 1 PROVIDE PHOTOCELL AND CONNECT TO EXISTING PHOTOCELL CIRCUIT.
  - 2 CONNECT LIGHT FIXTURE TO EXISTING CIRCUIT. VERIFY CIRCUIT VOLTAGE IN THE FIELD.
  - 3 INSTALL SALVAGED FIRE ALARM PULL STATION.
  - 4 CONENCT TO EXISTING SPARE ZONE CARD.
  - 5 REFER TO PLANS FOR QUANTITY AND LOCATIONS.
  - 6 LIGHTING SHALL NOT BE CONNECTED TO THE LOAD SIDE OF GFCI RECEPTACLE.

- DRAWING NOTES**
- 1. HOLES MAY NOT BE DRILLED IN EXISTING REINFORCED CONCRETE WAFFLE SLABS/BEAMS.
  - 2. CONNECT EMERGENCY BATTERY BACKUP UNIT AND EXIT SIGNS TO LOCAL LIGHTING CIRCUIT AHEAD OF ANY SWITCHES, OCCUPANCY SENSORS, ETC.
  - 3. ELEVATOR INSTALLATION AND EQUIPMENT SHALL COMPLY WITH NEC ARTICLE 620. COORDINATE LOCATIONS OF LIGHT FIXTURES, DEVICES, ETC IN ELEVATOR MACHINE ROOM AND HOISTWAY WITH ELEVATOR INSTALLER.

**OAK POINT ASSOCIATES**  
 ARCHITECTURE • ENGINEERING • PLANNING  
 251 Main Street, Ebbesford, Maine 04005 (T) 207-263-0183 (F) 207-283-0382  
 www.oakpoint.com



DESIGNED BY: MHL  
 DRAWN BY: RSW  
 CHECKED BY: DCL  
 PROJECT: 21602.06

**REICHE ELEMENTARY SCHOOL  
 PORTLAND SCHOOL DEPARTMENT**  
 353 Cumberland Avenue  
 Portland, ME 04102

**REICHE ELEMENTARY  
 ELEVATOR ADDITION**  
 166 Brackett Street  
 Portland, ME 04102

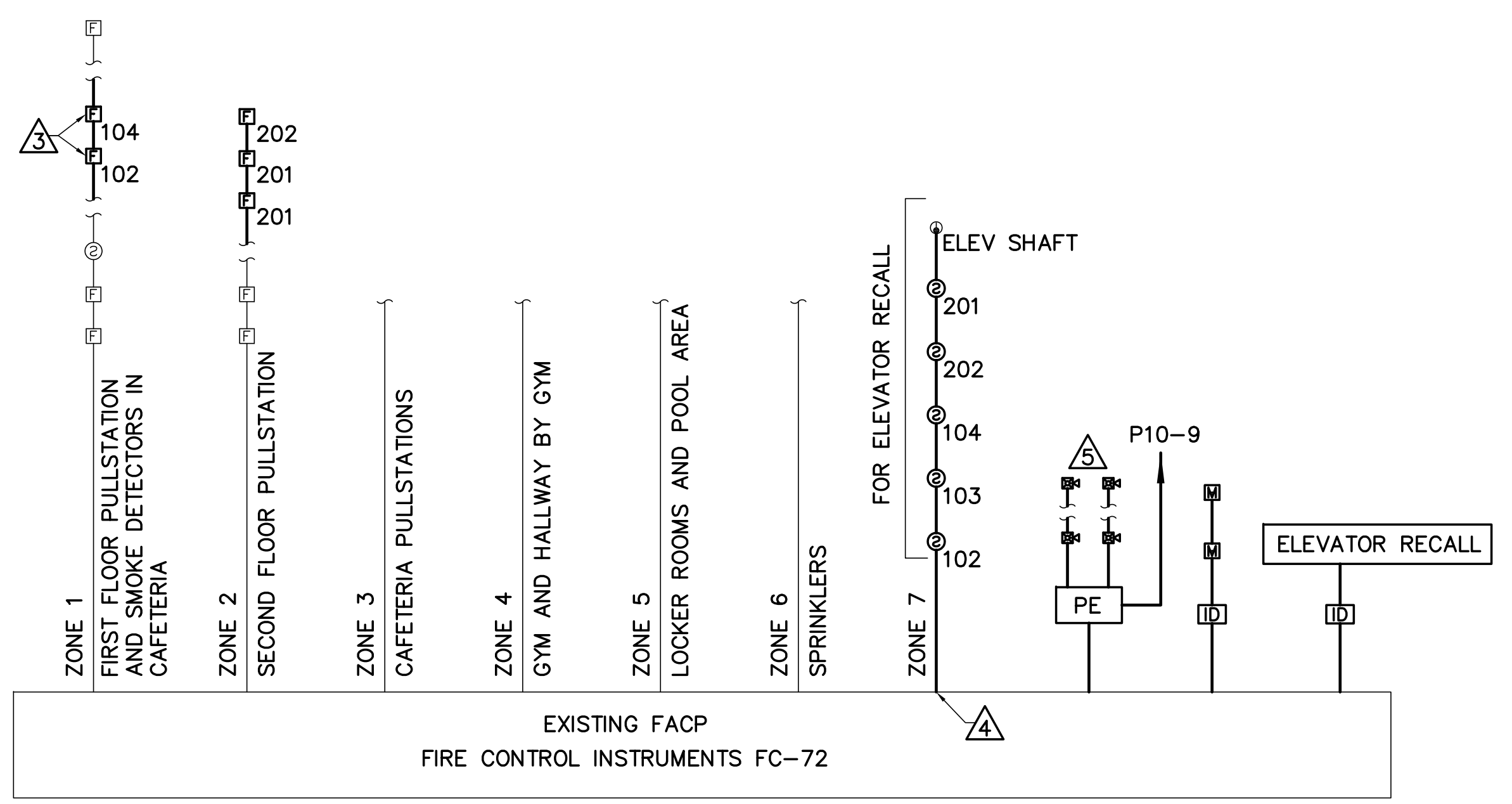
**FIRST AND  
 SECOND FLOOR  
 PARTIAL ELECTRICAL  
 LIGHTING AND FIRE  
 ALARM PLANS**

SCALE: AS NOTED  
 DATE: 04-29-2016  
 DWG.: **EL101**  
 SHEET: **40** OF **40**

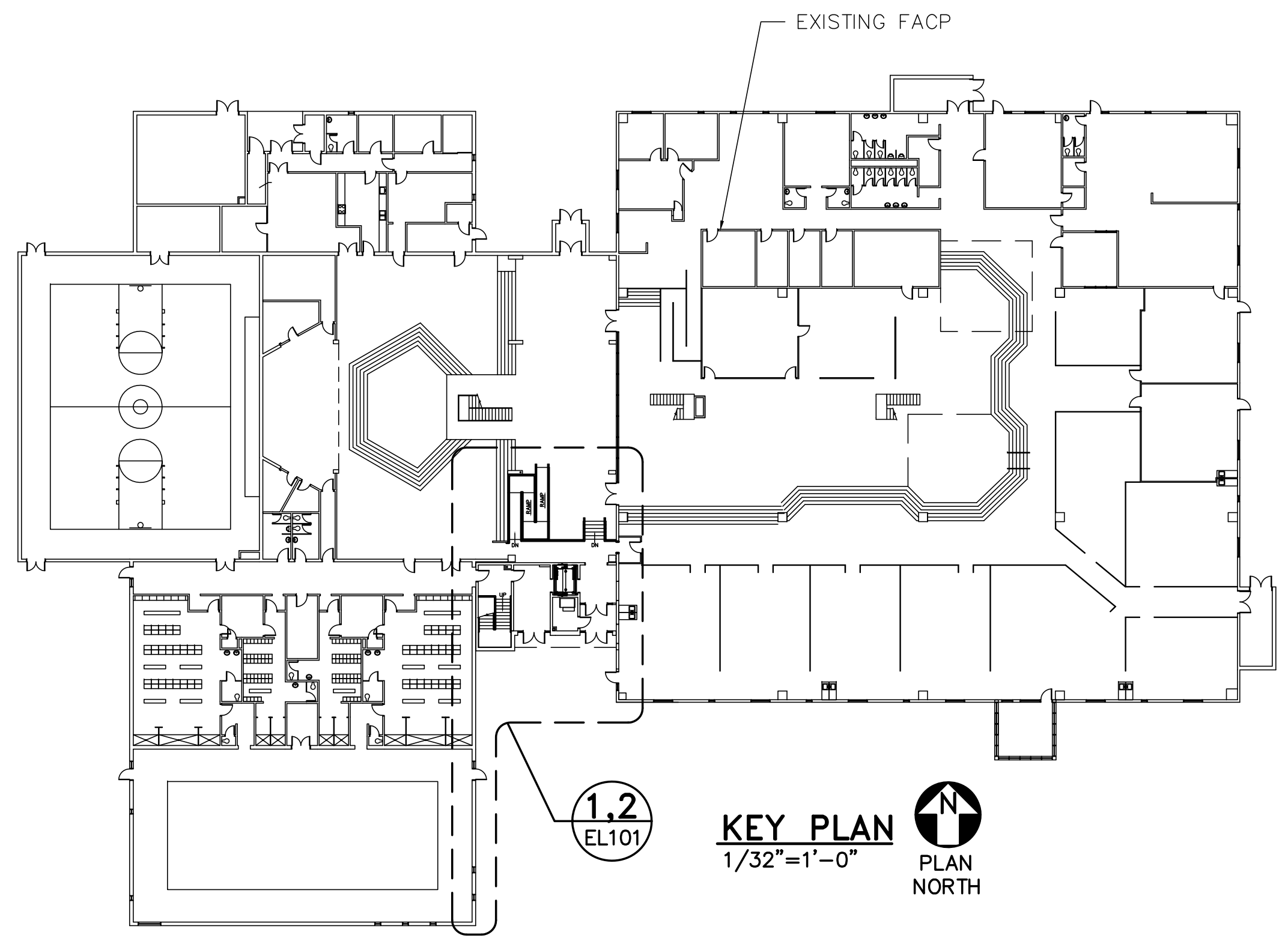
**LIGHTING FIXTURE SCHEDULE**

TYPE	DESCRIPTION	SOURCE	LUMENS	VOLTS	W/VA	MOUNTING	NOTES	MANUFACTURER	CATALOG NUMBER
F1	6" DOWNLIGHT	LED	1100	120/277	14	RECESSED	1,2	PRESCOLITE	LF6LEDG4-EM-6LFLEDG4-30K
F2	2X2 RECESSED DIRECT/INDIRECT	LED	2650-3050	120/277	25	RECESSED	1,3	COLUMBIA	LCAT22-35LW-EU
F3	2X2 RECESSED DIRECT/INDIRECT	LED	3200-3400	120/277	30	RECESSED	1,3	COLUMBIA	LCAT22-35ML-EU
F4	2X2 RECESSED DIRECT/INDIRECT	LED	2150-2300	120/277	22	RECESSED	1,3	COLUMBIA	LCAT22-35MW-EU
F5	1X4 STRIP	LED	-	120/277	53	SURFACE/CHAIN	1	COLUMBIA	LR04-35ML-EU
F6	VAPORTITE WALL MOUNT	LED	757	120/277	11	WALL	-	COLUMBIA	LR04-35ML-EU
W1	WALL MOUNT LED	LED	2869	120/277	28	WALL	1,2	HUBBELL	LNC2-12LU-3K-3-2-BBU
⊠	EXIT SIGN - SINGLE FACE	LED'S	-	120/277	-	UNIVERSAL	-	DUAL LITE	LX-U-R-W-E

- LIGHTING FIXTURE SCHEDULE NOTES**
1. PROVIDE EMERGENCY BATTERY BACKUP AS INDICATED ON PLANS.
  2. EXTERIOR LIGHT FIXTURES SHALL BE CONNECTED TO PHOTOCELL AND EXISTING CONTROLS CIRCUIT.
  3. NL INDICATES A NIGHT LIGHT. FIXTURE SHALL BE ON AT ALL TIMES AND SHALL NOT BE CONNECTED TO SWITCHING.



**3 FIRE ALARM ONE-LINE DIAGRAM**  
 EL101 NOT TO SCALE



**1.2 KEY PLAN**  
 EL101 SCALE: 1/32"=1'-0" PLAN NORTH

**GRAPHIC SCALES**

1/8"=1'-0" [Scale bar: 8', 4', 0, 8', 16']

1/32"=1'-0" [Scale bar: 32', 16', 0, 32', 64']

CHECK GRAPHIC SCALES BEFORE USING