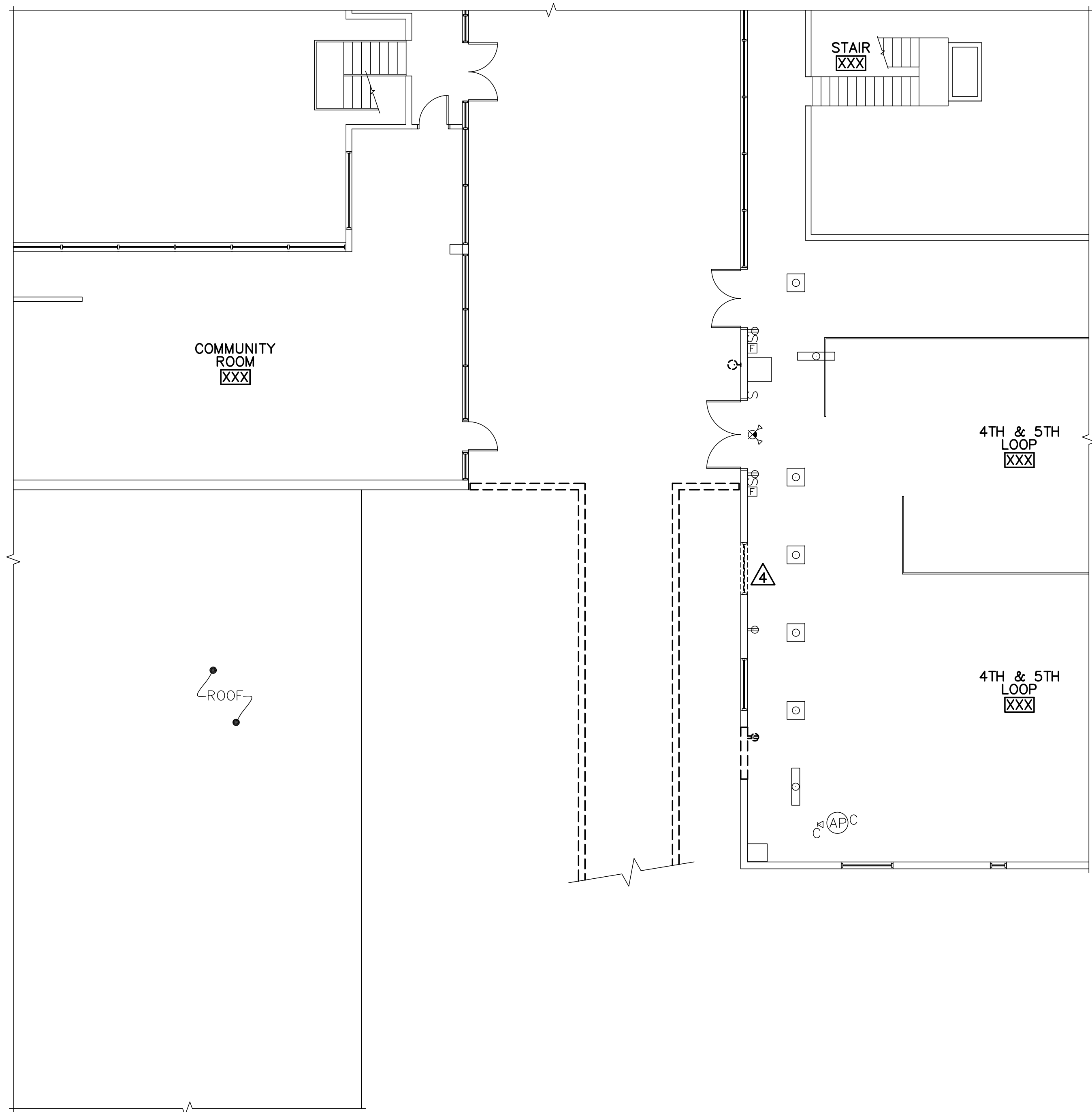




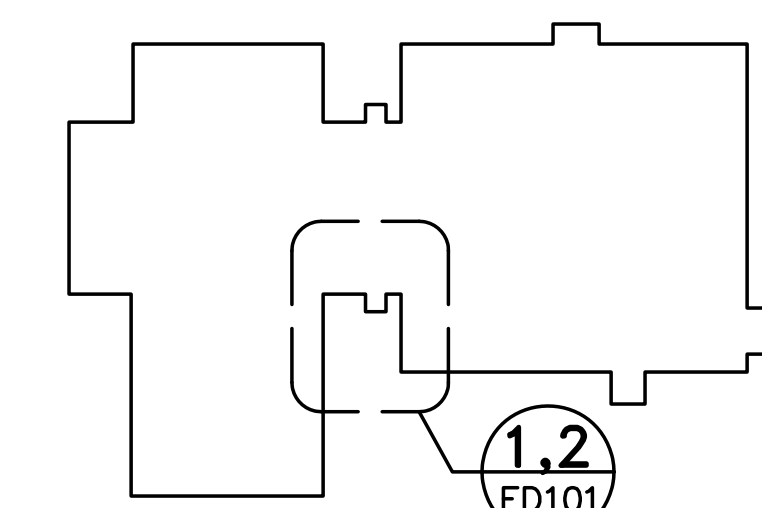
1 FIRST FLOOR ELECTRICAL REMOVALS PLAN
 ED101 SCALE: 1/8"=1'-0" PLAN NORTH



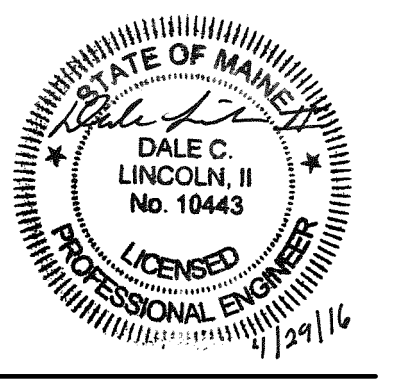
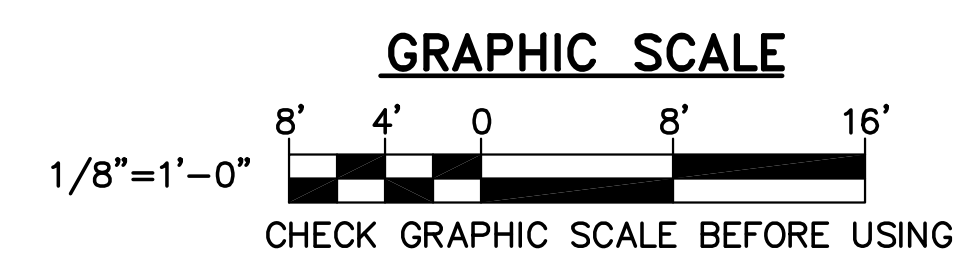
2 SECOND FLOOR ELECTRICAL REMOVALS PLAN
 ED101 SCALE: 1/8"=1'-0" PLAN NORTH

DRAWING KEYNOTES

- 1 REMOVE CONDUIT BODY, 3/4" CONDUIT AND WIRING (APPROXIMATELY 10 FEET) TO ACCOMMODATE BUILDING ADDITION. PROTECT CIRCUIT FOR REINSTALLATION.
- 2 REMOVE PHOTOCELL AND JUNCTION BOX. PHOTOCELL CIRCUIT SHALL REMAIN FOR REUSE.
- 3 REMOVE MAGNETIC DOOR CONTACT AND ASSOCIATED WIRE AND CONDUIT BACK TO SOURCE. EXISTING DEVICES TO REMAIN ON CIRCUIT SHALL REMAIN OPERATIONAL.
- 4 DISCONNECT UNIT VENTILATOR CIRCUIT. CIRCUIT SHALL REMAIN FOR RECONNECTION TO REVISED UNIT VENTILATOR LOCATION.
- 5 REMOVE LIGHT FIXTURE. CIRCUIT SHALL REMAIN FOR REUSE.
- 6 REMOVE COMMUNICATIONS WIRE TO ACCOMMODATE ELEVATOR ADDITION WORK. SALVAGE FOR REINSTALLATION.
- 7 REMOVE FIRE ALARM PULL STATION AND SALVAGE FOR RELOCATION.



KEY PLAN
 NOT TO SCALE PLAN NORTH



DESIGNED BY: MHL
 DRAWN BY: RSW
 CHECKED BY: DCL
 PROJECT: 21602.06

REICHE ELEMENTARY SCHOOL
 PORTLAND SCHOOL DEPARTMENT
 353 Cumberland Avenue
 Portland, ME 04102

REICHE ELEMENTARY
 ELEVATOR ADDITION
 166 Brackett Street
 Portland, ME 04102

FIRST AND
 SECOND FLOOR
 PARTIAL
 ELECTRICAL
 REMOVALS PLANS

SCALE: AS NOTED
 DATE: 04-29-2016

DWG.: ED101

SHEET: 38 OF 40