

CIVIL NOTES:

- SEE SHEET G-001 FOR ABBREVIATIONS.
- EXISTING UNDERGROUND UTILITIES ARE SHOWN IN THEIR APPROXIMATE LOCATIONS ONLY AND ARE BASED ON FIELD RECONNAISSANCE AND PLAN REFERENCES. PRIOR TO COMMENCING EXCAVATION OPERATIONS ON THE SITE, DETERMINE THE EXACT LOCATION OF ALL UNDERGROUND UTILITIES IN THE WORK UTILIZING A PRIVATE UTILITY LOCATING SERVICE, CONTACT "OK TO DIG" AT 1-866-658-6344, AND CONTACT "DIGSAFE" AT 811 TO OBTAIN A "DIGSAFE" PERMIT. REPORT ANY DISCREPANCIES BETWEEN THE PLANS AND THE EXACT UTILITY LOCATIONS TO THE OWNER PRIOR TO DISTURBING AREAS SURROUNDING THE UNDERGROUND UTILITIES.
- INFORMATION SHOWN HEREON IS BASED ON THE FOLLOWING:
 - TOPOGRAPHIC SURVEY AND SITE RECONNAISSANCE PERFORMED BY OAK POINT ASSOCIATES IN MARCH, 2016.
 - PLANS ENTITLED "PORTLAND WEST ELEMENTARY SCHOOL" PREPARED BY WILBUR R. INGALLS, JR, ARCHITECT, PORTLAND MAINE. DATED 03-29-72.
 - PLAN ENTITLED "STANDARD BOUNDARY AND TOPOGRAPHIC SURVEY AT REICHE SCHOOL" PREPARED BY OWEN HASKALL, INC, PORTLAND MAINE. DATED 02-02-01.
- BOUNDARY INFORMATION INDICATED IS BASED ON PLAN REFERENCE 3C, ABOVE.
- THE PROJECT BENCHMARK ELEVATION IS 139.50' AND IS THE FINISHED FLOOR AT THE CENTER OF THE EXISTING DOOR ON THE WEST SIDE OF THE MAIN ENTRANCE (SEE SHEET CS101). PRIOR TO COMMENCING CONSTRUCTION, SET A NEW BENCHMARK IN A LOCATION THAT WILL NOT BE DISTURBED DURING CONSTRUCTION ACTIVITIES.
- RESTORE, REPAIR OR REPLACE SURFACES, SITE FEATURES AND LANDSCAPING THAT ARE DAMAGED BY CONSTRUCTION/CONTRACTOR OPERATIONS TO THEIR ORIGINAL CONDITION, AS APPROVED BY THE OWNER, AT NO ADDITIONAL COST TO THE OWNER.
- DO NOT DIRECT VEHICLE OR EQUIPMENT EXHAUST TOWARDS THE BUILDINGS OR TREE PROTECTION AREAS.
- HAND EXCAVATE WITHIN THE DRIPLINE OF TREES INDICATED TO REMAIN AND WITHIN 3' OF EXISTING UNDERGROUND UTILITIES AND EXISTING FOUNDATION WALLS INDICATED TO REMAIN.
- DO NOT PLACE, PUT OR DUMP ANY CONSTRUCTION MATERIALS OR DEMOLITION DEBRIS IN AREAS THAT COULD ADVERSELY IMPACT THE SURROUNDING AREAS OR WASH INTO THE EXISTING SEWER/STORM DRAIN SYSTEM.
- COLLECT AND STORE ALL WASTE MATERIALS IN SECURELY LIDDED RECEPTACLES. ALL TRASH AND CONSTRUCTION DEBRIS FROM THE SITE SHALL BE DEPOSITED IN A DUMPSTER. DO NOT BURY CONSTRUCTION WASTE MATERIALS ON SITE.
- STORE ALL MATERIALS KEPT ON SITE IN A NEAT, ORDERLY MANNER IN THEIR PROPER (ORIGINAL IF POSSIBLE) CONTAINER AND IF POSSIBLE UNDER A ROOF OR OTHER ENCLOSURE. STORE ONLY SUFFICIENT AMOUNTS OF MATERIALS TO COMPLETE THE JOB.
- DISPOSE OF SURPLUS MATERIALS IN ACCORDANCE WITH THE MANUFACTURER'S RECOMMENDATIONS AND STATE AND FEDERAL CODES.
- MONITOR ALL CONSTRUCTION RELATED EQUIPMENT AND VEHICLES FOR LEAKS AND RECEIVE REGULAR PREVENTATIVE MAINTENANCE TO REDUCE LEAKAGE.
- DISCHARGE AND WASH OUT SURPLUS CONCRETE OR DRUM WASH WATER FROM CONCRETE TRUCKS IN A CONTAINED AREA ON SITE. SEE PHASING AND COORDINATION NOTES BELOW FOR POSSIBLE STAGING/LAY DOWN/WASH OUT AREA LOCATIONS.

PHASING AND COORDINATION NOTES:

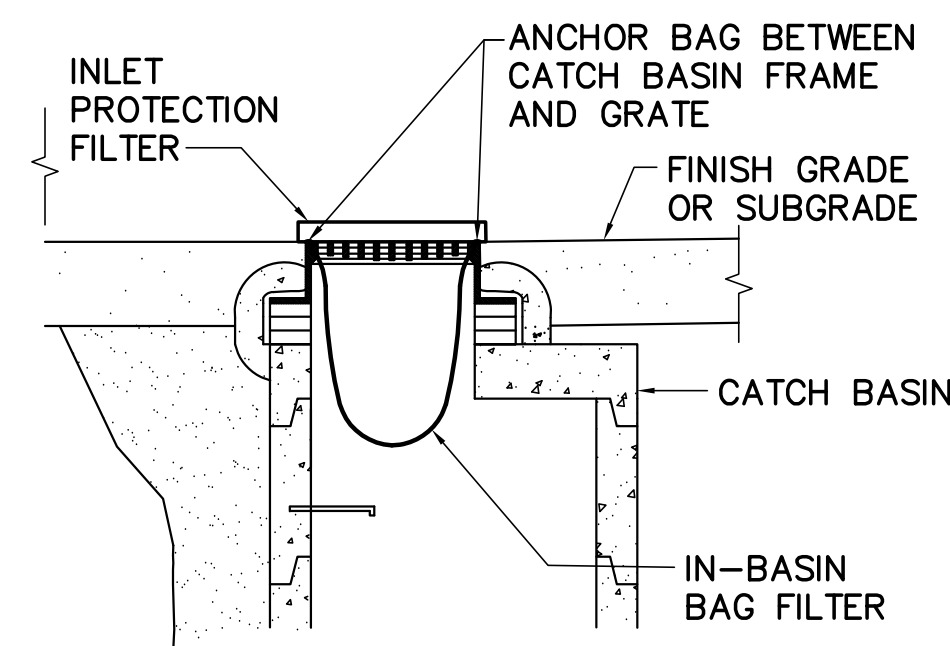
- PHASE PROJECT TO MINIMIZE OBSTRUCTION OF THE EXISTING BRICK SIDEWALK ALONG CLARK STREET.
- COORDINATE TIMING OF BRICK SIDEWALK WORK WITH OWNER.
- COORDINATE LAY DOWN AND STAGING AREA LOCATION WITH OWNER. POSSIBLE LOCATIONS FOR LAY DOWN/STAGING INCLUDE WITHIN THE PROJECT'S AREA OF DISTURBANCE INDICATED ON CS101 OR A TOWN-OWNED PARKING AREA ON CLARK STREET, APPROXIMATELY 220 FEET WEST OF THE SITE.

EROSION CONTROL NOTES:

- DURING CONSTRUCTION AND THEREAFTER, IMPLEMENT EROSION CONTROL MEASURES AS INDICATED AND SPECIFIED. EROSION CONTROL MEASURES SHALL BE IN ACCORDANCE WITH "MAINE EROSION AND SEDIMENT CONTROL FIELD GUIDE FOR CONTRACTORS," PUBLISHED BY BUREAU OF LAND AND WATER QUALITY AND MAINE DEPARTMENT OF ENVIRONMENTAL PROTECTION, DATED MARCH 2015, OR MOST RECENT EDITION.
- PURSUANT TO THE MAINE EROSION AND SEDIMENTATION CONTROL LAW, PROVIDE AND MAINTAIN EROSION CONTROL MEASURES SHOWN ON THE DRAWINGS, AND PROVIDE ADDITIONAL MEASURES AS NECESSARY AND APPLICABLE TO CONTROL EROSION AND SEDIMENTATION FROM THE PROJECT SITE.
- LIMIT AREAS OF EXPOSED SOILS TO THOSE AREAS THAT WILL ACTIVELY BE WORKED. TEMPORARILY STABILIZE ANY AREA OF DISTURBED SOIL THAT REMAINS UNWORKED FOR MORE THAN 14 DAYS USING TEMPORARY MULCHING (IF THE SOIL WILL BE PERMANENTLY STABILIZED WITHIN 30 DAYS) OR TEMPORARY SEEDING AND MULCHING (IF THE SOIL WILL NOT BE PERMANENTLY STABILIZED WITHIN 30 DAYS). PERMANENTLY STABILIZE ANY AREA OF DISTURBED SOIL BROUGHT TO FINAL GRADE WITHIN 7 DAYS. DISTURBED SOILS DO NOT INCLUDE COMPACTED STRUCTURAL FILLS USED FOR ROADS, SIDEWALKS, PARKING LOTS, AND BUILDING FOUNDATIONS.
- GROUNDWATER IS NOT ANTICIPATED TO BE ENCOUNTERED DURING EXCAVATION. HOWEVER, IF DEWATERING OF EXCAVATIONS ARE NECESSARY, UTILIZE BAG-TYPE DEWATERING FILTERS OR OTHER APPROVED METHODS. LOCATE DEWATERING SEDIMENT FILTERS AT LEAST 75' FROM ANY CATCH BASIN INLET.
- INSPECT DISTURBED AND IMPERVIOUS AREAS AND EROSION CONTROL MEASURES, AT LEAST ONCE A WEEK AND BEFORE AND AFTER EACH STORM EVENT GREATER THAN 0.5 INCH, PRIOR TO COMPLETION OF PERMANENT STABILIZATION. A PERSON WITH KNOWLEDGE OF EROSION AND STORMWATER CONTROL, INCLUDING THE MAINE POLLUTANT DISCHARGE ELIMINATION SYSTEM (MPDES) STANDARDS SHALL CONDUCT THE INSPECTION. IF BEST MANAGEMENT PRACTICES (BMPs) NEED TO BE MODIFIED OR IF ADDITIONAL BMPs ARE NECESSARY, IMPLEMENTATION SHALL BE COMPLETED WITHIN 7 CALENDAR DAYS AND PRIOR TO ANY STORM EVENT (RAINFALL). ALL MEASURES SHALL BE MAINTAINED IN EFFECTIVE OPERATING CONDITION UNTIL AREAS ARE PERMANENTLY STABILIZED.
- PROTECT ALL STABILIZED AREAS FROM EROSION AND IMMEDIATELY REPAIR/REVEGETATE ERODED AREAS.
- MAINTAIN ALL EROSION CONTROL MEASURES FOR THE LIFE OF THE PROJECT AND UNTIL PERMANENT STABILIZATION OF THE ENTIRE SITE IS ESTABLISHED. PERMANENT STABILIZATION SHALL CONSIST OF AT LEAST 90-PERCENT VEGETATION, PAVEMENT, GRAVEL BASE, OR MULCH.
- PROVIDE PLANTING SOIL, SEED, FERTILIZER AND MULCH ON ALL DISTURBED AREAS NOT OTHERWISE SPECIFIED. PERMANENT SEEDING SHALL BE ACCOMPLISHED FROM APRIL 1 TO MAY 30 AND AUGUST 15 TO OCTOBER 30 UNLESS LATER DATES ARE APPROVED BY THE OWNER/ARCHITECT. WATER ALL VEGETATED AREAS AS NECESSARY TO ESTABLISH A VIGOROUS TURF.
- REMOVE ALL TEMPORARY EROSION CONTROL MEASURES WITHIN 30 DAYS AFTER THE TRIBUTARY AREA HAS BEEN PERMANENTLY STABILIZED. REMOVE ANY ACCUMULATED SEDIMENTS AND STABILIZE.

CIVIL LEGEND

	FINISHED GRADE SPOT ELEVATION		EXISTING STORM DRAIN LINE
	EXISTING GRADE SPOT ELEVATION		FOUNDATION DRAIN LINE
	EXISTING PROPERTY LINE		STORM DRAIN LINE(S)
	EXISTING BUILDING LINE		TREE PROTECTION FENCE
	BUILDING LINE		TEMPORARY CONSTRUCTION FENCE
	EXISTING CURB LINE		SEDIMENT CONTROL WATTLE
	EXISTING ELEVATION CONTOUR LINE		EXISTING UTILITY POLE
	ELEVATION CONTOUR LINE		EXISTING GUY WIRE
	REMOVALS (REMOVALS DRAWING ONLY)		EXISTING SEWER MANHOLE
	EXISTING OVERHEAD UTILITY LINE		EXISTING CATCH BASIN
	EXISTING SANITARY SEWER LINE		EXISTING TREE/SHRUB
			POINT OF CONNECTION TO EXISTING UTILITY
			DRAINAGE FLOW
			CATCH BASIN

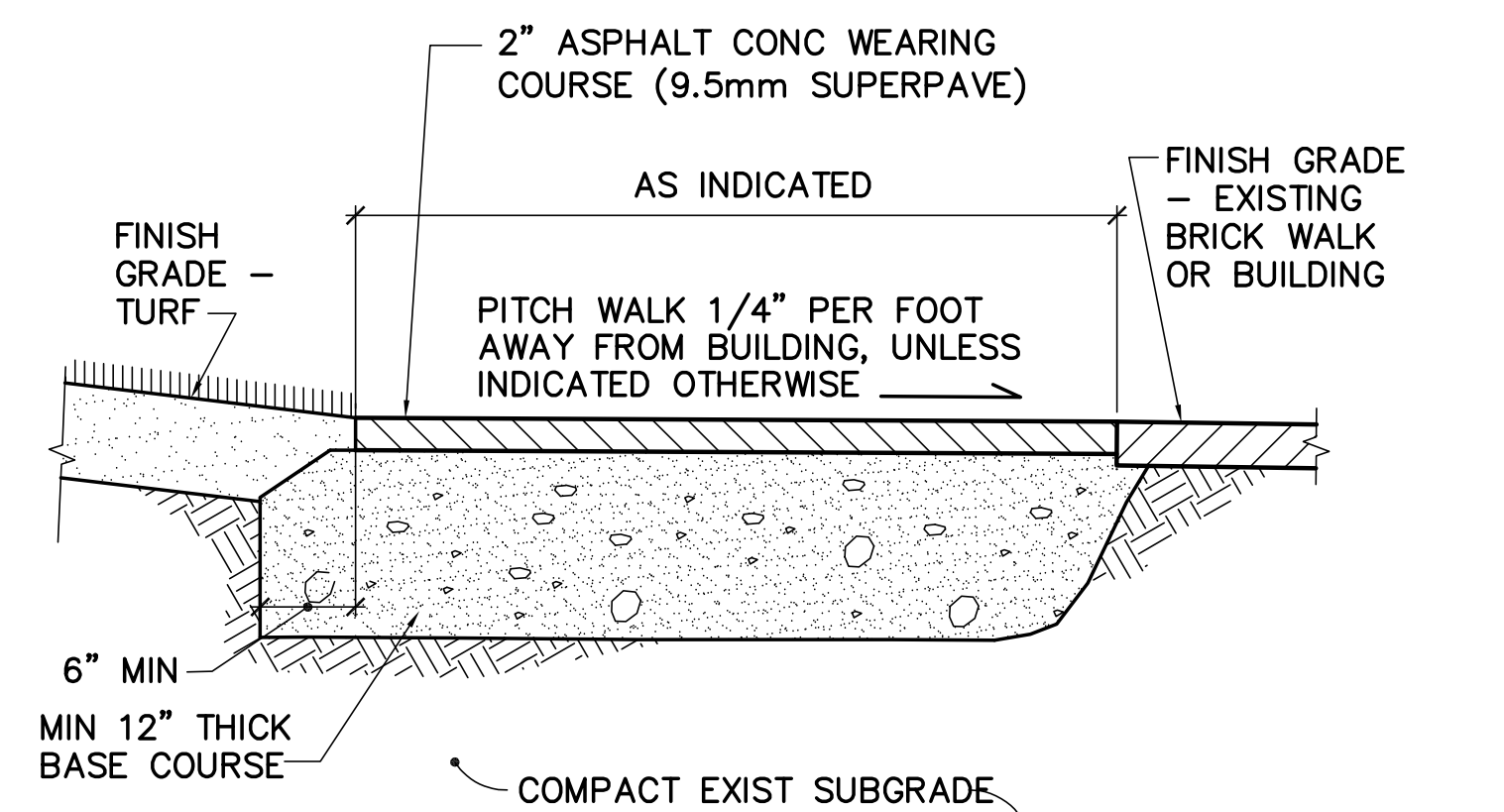


INLET PROTECTION NOTES:

- IN-BASIN BAG FILTERS SHALL BE "SILT-CATCH" BY DGI INDUSTRIES OR APPROVED EQUAL. INSTALL ACCORDING TO THE MANUFACTURER'S RECOMMENDATIONS.
- INLET PROTECTION FILTER SHALL BE "SEDIGUARD" BY EARTH SUPPORT SYSTEMS OR APPROVED EQUAL. INSTALL ACCORDING TO MANUFACTURERS INSTRUCTIONS.
- PROVIDE INLET PROTECTION IN EXISTING OR NEWLY PAVED AREAS WITH NON-STABILIZED TRIBUTARY WATERSHEDS.
- REMOVE ACCUMULATED SEDIMENTS IN ACCORDANCE WITH THE MANUFACTURER'S RECOMMENDATIONS.
- REMOVE INLET PROTECTION WITHIN 30 DAYS OF PERMANENT STABILIZATION OF TRIBUTARY AREA.

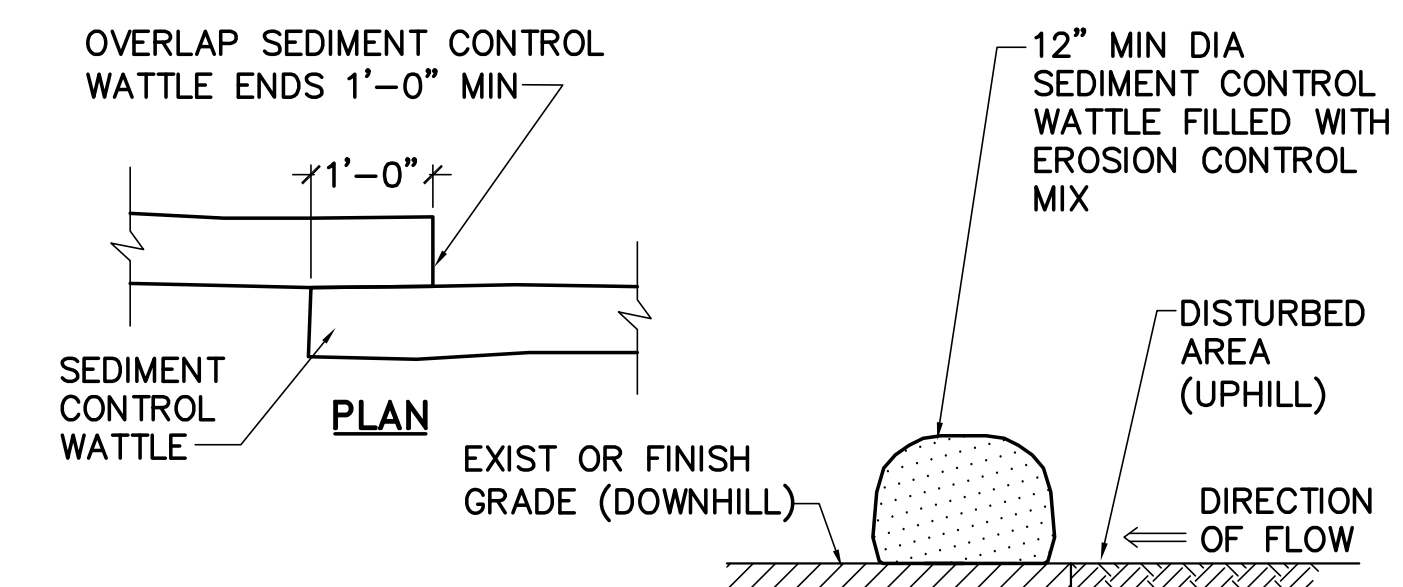
1 CATCH BASIN INLET PROTECTION DETAIL

CS101 C-001 NOT TO SCALE



3 TYP ASPHALT CONCRETE WALK DETAIL

C-001, CS101.C-001 NOT TO SCALE

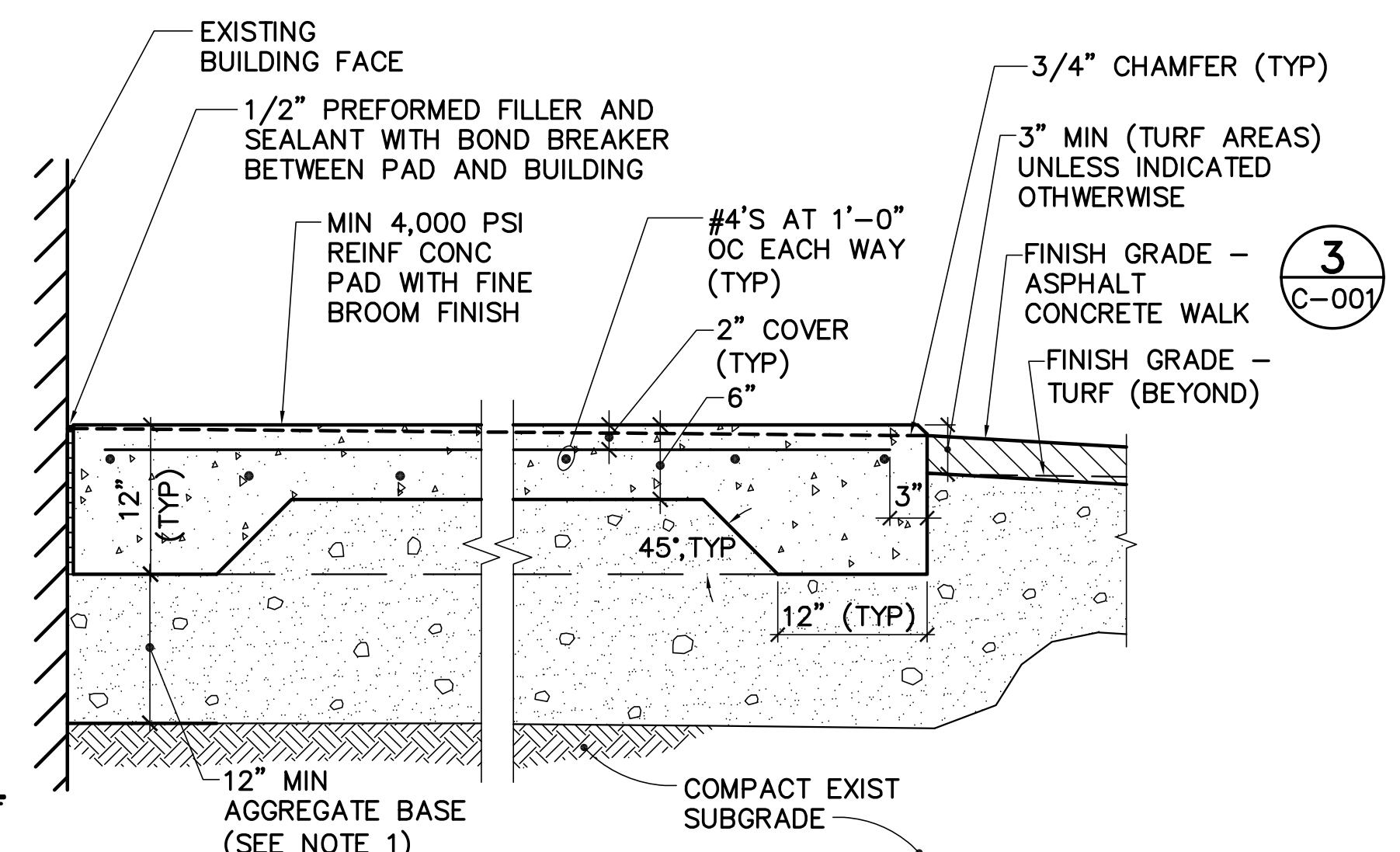


SEDIMENT CONTROL WATTLE NOTES:

- MANUFACTURE SEDIMENT CONTROL WATTLES FOR THE PURPOSE OF TEMPORARY SEDIMENT CONTROL AND INSTALL ACCORDING TO THE MANUFACTURERS RECOMMENDATIONS.
- REMOVE ACCUMULATED SEDIMENT WHEN IT REACHES ONE THIRD THE WATTLE HEIGHT.
- SEDIMENT CONTROL WATTLES SHALL REMAIN IN PLACE UNTIL ALL AREAS ARE STABILIZED AND REMOVED WITHIN 30 DAYS OF PERMANENT STABILIZATION OF TRIBUTARY AREA.
- SECURE SEDIMENT CONTROL WATTLES IN PLACE TO PREVENT MOVEMENT AND UNDERMINING OF WATTLE.
- EROSION CONTROL MIX SHALL CONSIST OF AT LEAST 80% WELL GRADED ORGANIC MATERIAL INCLUDING SHREDDED OR COMPOSTED BARK OR STUMP GRINDINGS. EROSION CONTROL MIX SHALL CONFORM TO MAINE DEPARTMENT OF ENVIRONMENTAL PROTECTION STANDARDS.

2 TYP SEDIMENT CONTROL WATTLE DETAIL

CS101 C-001 NOT TO SCALE

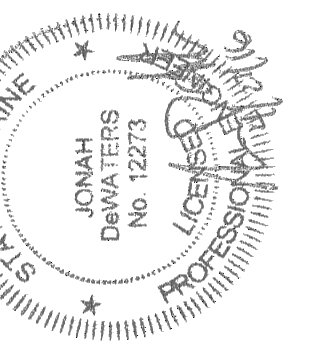


NOTES:

- EXTEND AGGREGATE BASE 1'-0" MIN BEYOND PAD IN TURF AREAS.

4 REINFORCED CONCRETE PAD DETAIL

CS101 C-001 NOT TO SCALE



DESIGNED BY: JSD
 DRAWN BY: JSD
 CHECKED BY: JLG
 PROJECT: 21602.06

REICHE ELEMENTARY SCHOOL
 PORTLAND SCHOOL DEPARTMENT
 353 Cumberland Avenue
 Portland, ME 04102

REICHE ELEMENTARY
 ELEVATOR ADDITION
 166 Brackett Street
 Portland, ME 04102

CIVIL NOTES LEGEND AND EROSION CONTROL/SITE DETAILS

SCALE: AS NOTED

DATE: 04-26-2016

DWG.: C-001

SHEET: 2 OF 40