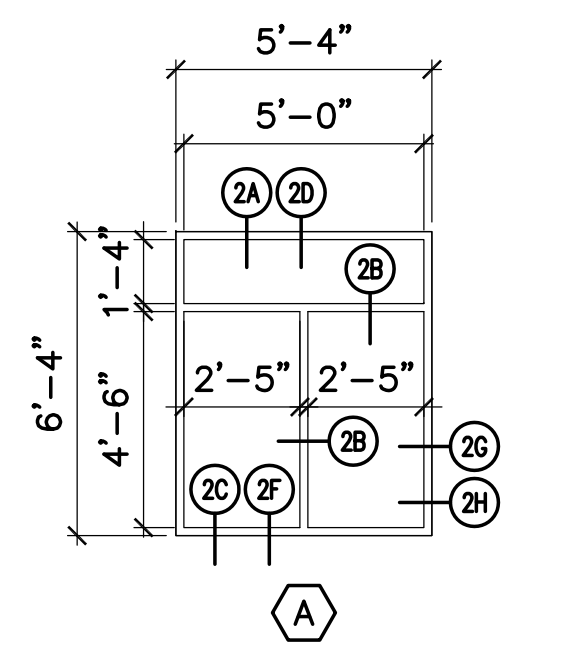


## DOOR SCHEDULE

NO.	SIZE	DOOR			HARDWARE SET	FRAME			DETAILS			FIRE RATING	NOTES
		TYPE	MAT	FINISH		TYPE	MAT	FINISH	HEAD	JAMB	SILL		
101A	(2) 3'-0"x7'-0"x1-3/4"	B	ALUM	PNT	1	4	ALUM	PNT	2K/AE620	2H/AE620	2L/AE620	-	-
101B	(2) 3'-0"x7'-0"x1-3/4"	B	ALUM	PNT	2	4	ALUM	-	2K/AE620	2H/AE620	2L/AE620	-	-
102	3'-0"x7'-0"x1-3/4"	A	HM	PNT	3	1	HM	PNT	3C/AE620	3D/AE620	-	-	-
103	(2) 3'-0"x7'-0"x1-3/4"	B	ALUM	PNT	1	4	ALUM	-	2L/AE620	2H/AE620	2L/AE620	-	-
104	6'-0"x7'-0" CASED OPEN	-	-	-	-	2	HM	PNT	3C/AE620	3D/AE620	-	-	-
105	3'-0"x7'-0" CASED OPEN	-	-	-	-	1	HM	PNT	3B/AE620	3A/AE620	-	-	-
105A	3'-0"x7'-0"x1-3/4"	B	HM	PNT	4	1	HM	PNT	3D/AE620	3C/AE620	-	-	-
106	3'-0"x7'-0"x1-3/4"	A	ALUM	PNT	5	5	ALUM	-	2A/AE620	2H/AE620	2L/AE620	-	-
201	3'-0"x7'-0"x1-3/4" EXIST	B	ALUM	PNT	5	3A	ALUM	-	2A/AE620	2G/AE620	2L/AE620	-	-
202	3'-0"x7'-0"x1-3/4" EXIST	B	ALUM	PNT	5	3	ALUM	-	2A/AE620	2G/AE620	2L/AE620	-	-
202A	3'-0"x7'-0"x1-3/4"	C	HM	PNT	4	1	HM	PNT	3D/AE620	3C/AE620	-	-	-
S01A	3'-0"x7'-0"x1-3/4"	C	HM	PNT	6	1	HM	PNT	3D/AE620	3C/AE620	-	60 MIN	-
S01B	3'-0"x7'-0"x1-3/4"	C	HM	PNT	6	1	HM	PNT	3D/AE620	3C/AE620	-	60 MIN	-
S01C	3'-0"x7'-0"x1-3/4"	C	HM	PNT	4	1	HM	PNT	3D/AE620	3C/AE620	-	60 MIN	-

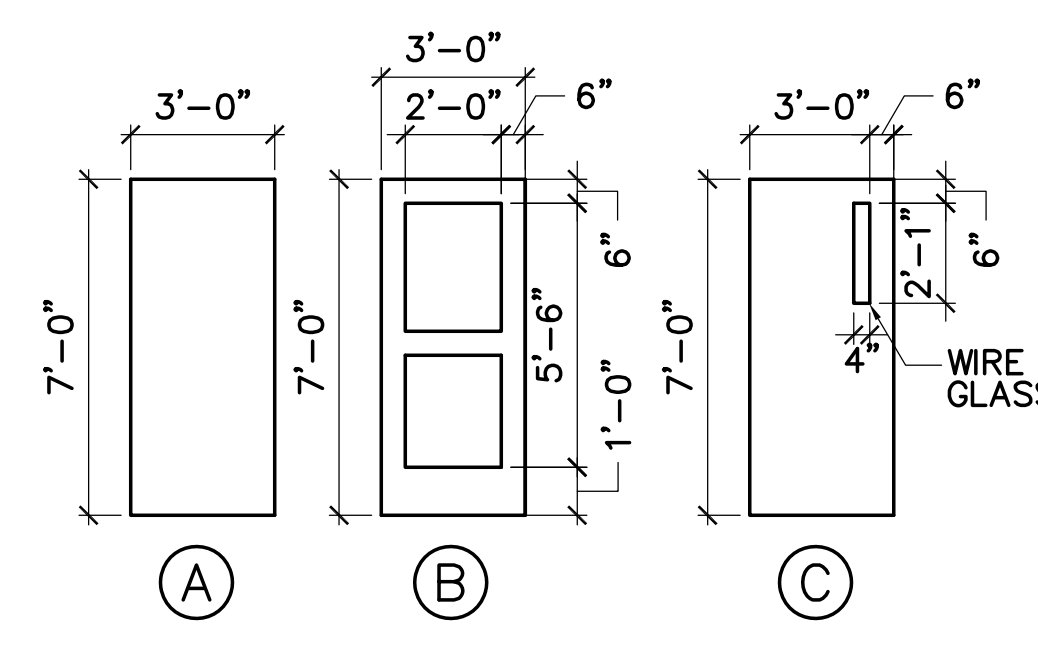


**1 WINDOW TYPES**  
AE620 SCALE: 1/4"=1'-0"

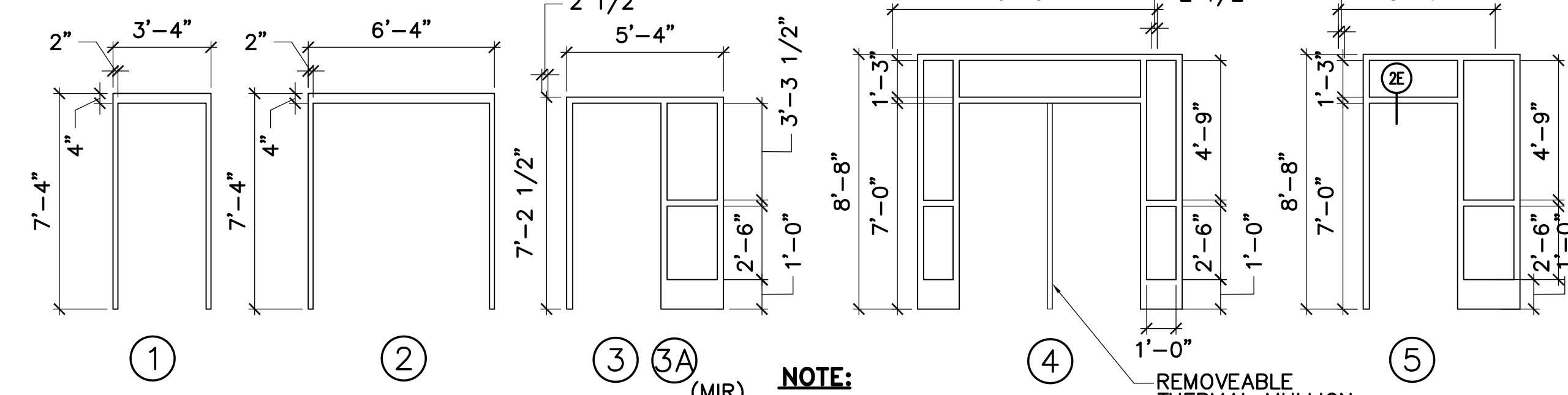
## ROOM FINISH SCHEDULE

NO.	DESCRIPTION	FLOOR	BASE	WALLS				CEILING		NOTES
				NORTH	EAST	SOUTH	WEST	MATERIAL	HEIGHT	
101	VESTIBULE	QT	QT	PNT	PNT	PNT	PNT	SAT	8'-8"	1,2
102	ELEVATOR MACHINE ROOM	CONC - P	-	PNT	PNT	PNT	PNT	-	-	1,2
103	ELEVATOR FOYER	PT	PT	PNT	PNT	PNT	PNT	SAT	8'-8"	1,2
104	ELEVATOR LOBBY	CPT	RB	PNT	PNT	PNT	PNT	SAT	8'-8"	1,2
105	CORRIDOR	CPT	RB	PNT	PNT	PNT	PNT	PNT	-	1,2
105A	CORRIDOR	CPT	RB	PNT	PNT	PNT	PNT	PNT	-	1,2
201	ELEVATOR FOYER	CPT	RB	PNT	PNT	PNT	PNT	SAT	10'-0"	1,2
202	ELEVATOR LOBBY	CPT	RB	PNT	PNT	PNT	PNT	SAT	10'-0"	1,2
S01	STAIR	RUB	RB	PNT	PNT	PNT	PNT	PNT	-	1,2,4,5

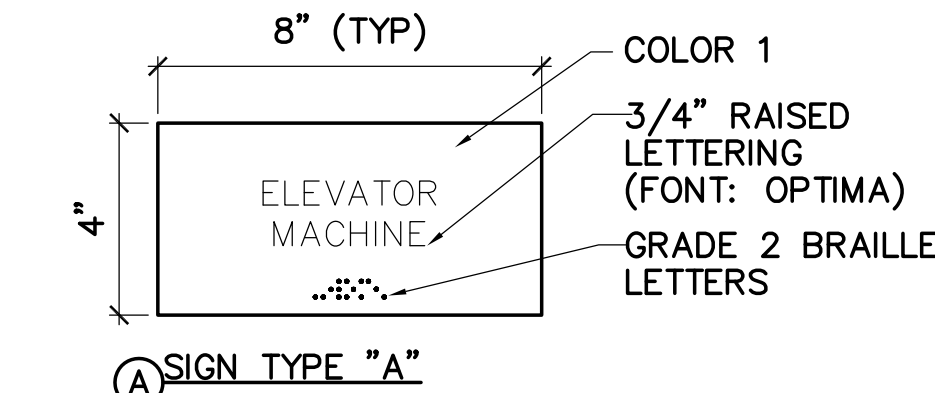
- NOTES:**
- PATCH, PREP, AND PAINT CONCRETE FOUNDATION WALLS. FILL INDENTS AND RUB WALL SMOOTH.
  - FINISHES PROVIDED AND INSTALLED BY OWNER.
  - PROVIDE SIGN 4A/AE620 MOUNT ON DOOR, 102 IN VESTIBULE 101.
  - PROVIDE SIGN 4B/AE620 MOUNT ON WALL IN ELEV FOYER 103, 201, AND COMMUNITY CENTER CORRIDOR AT DOORS S01A, S01B, AND S01C RESPECTIVELY.
  - PROVIDE RUBBER TILE AT LANDINGS (TOP, BOTTOM, AND INTERMEDIATE) AND RUBBER STAIR TREADS AND STAIRS.



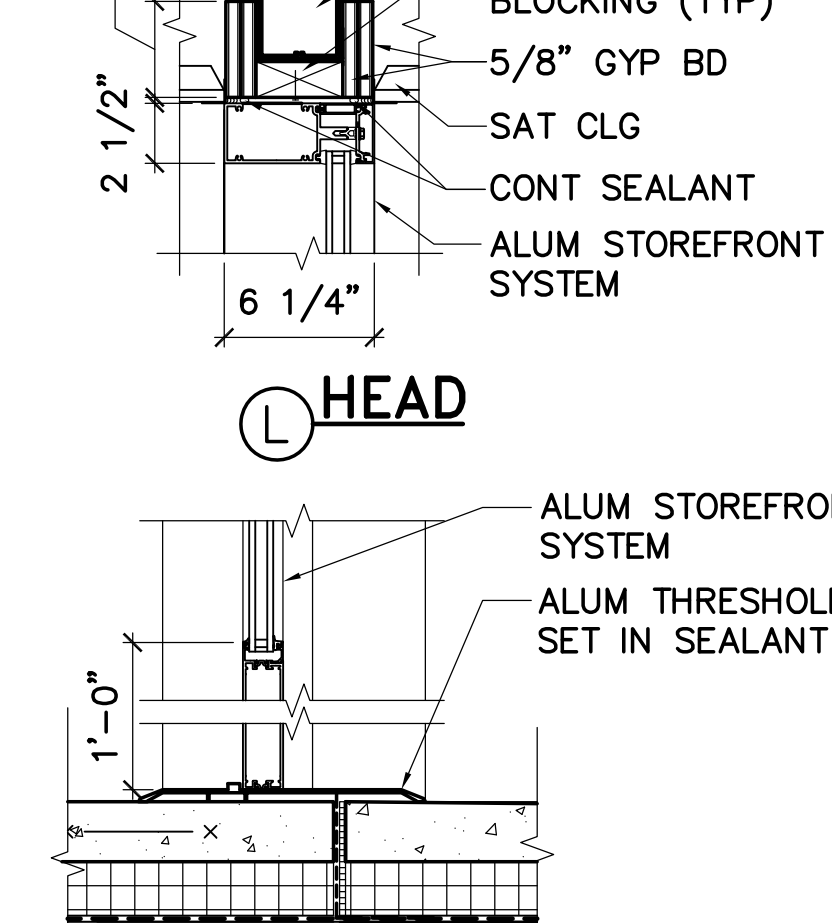
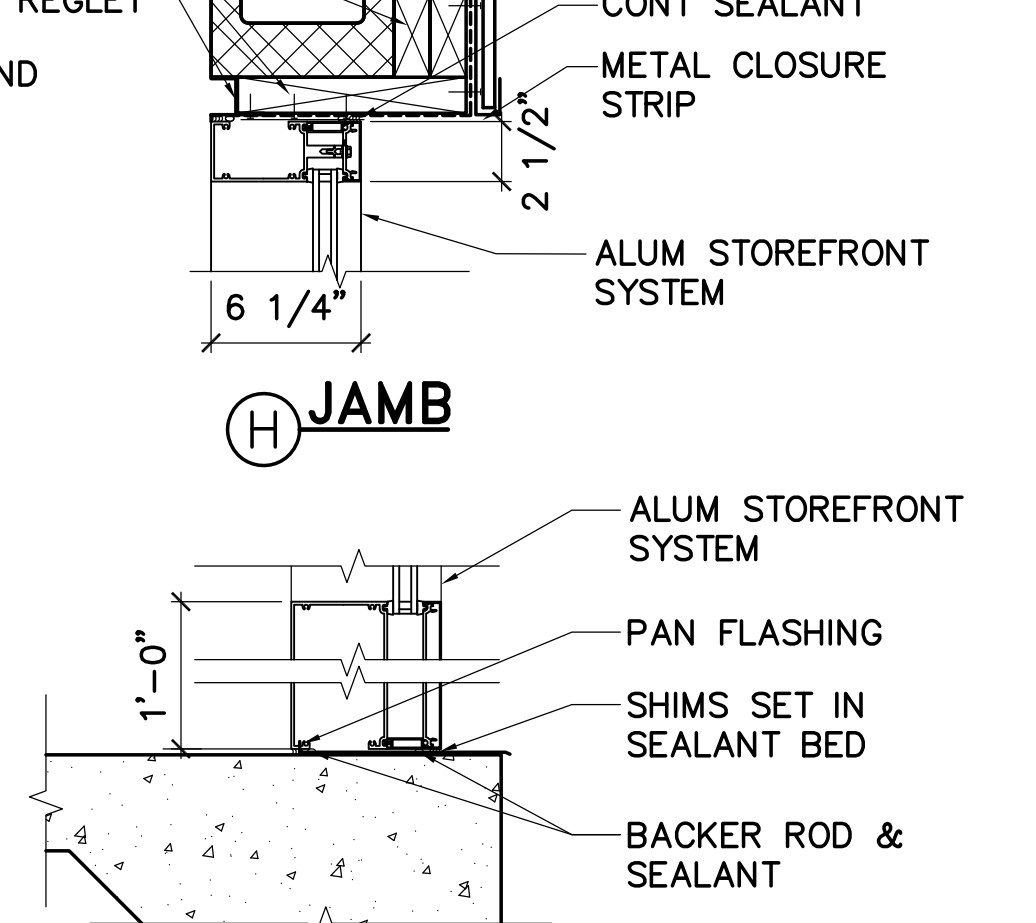
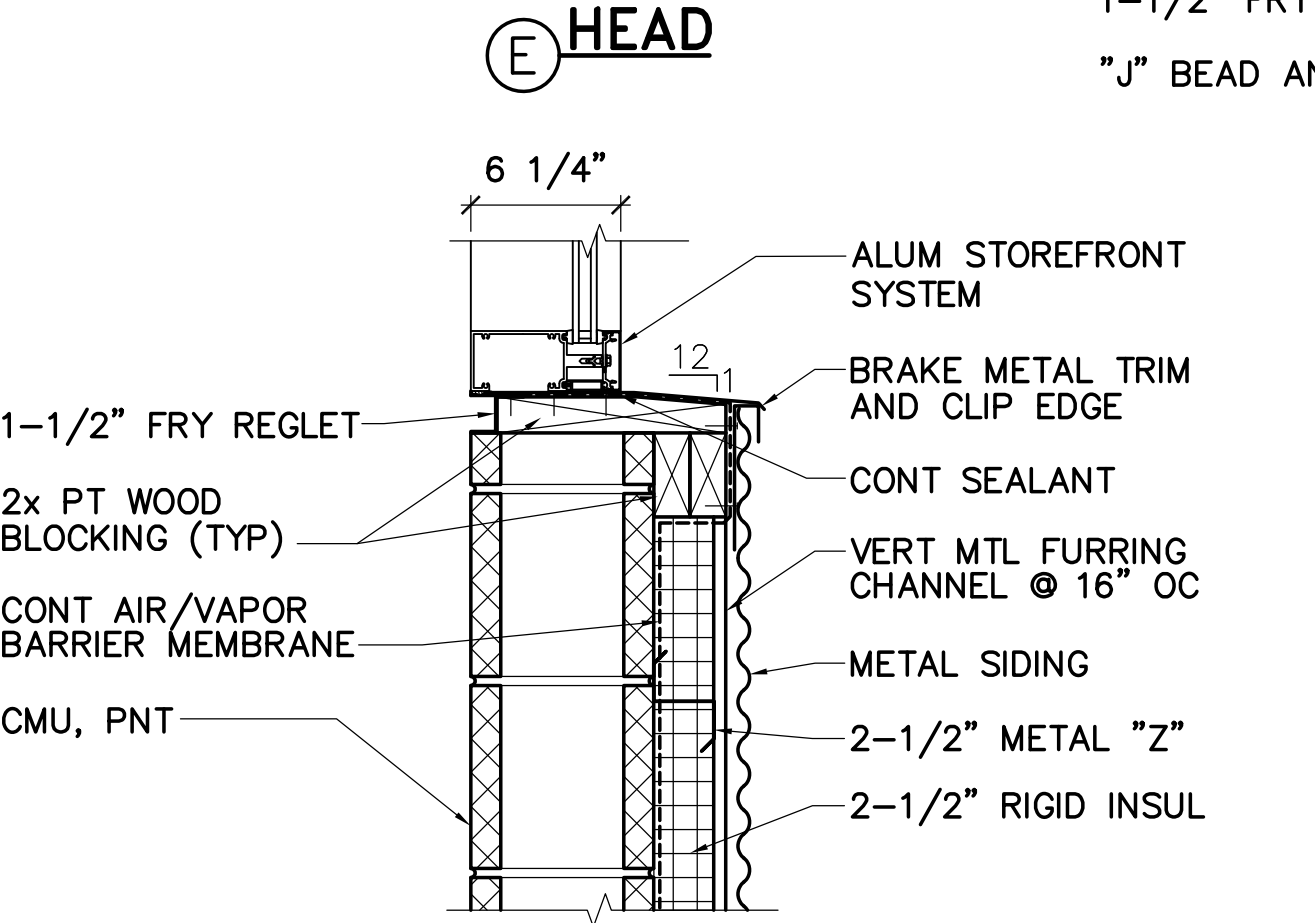
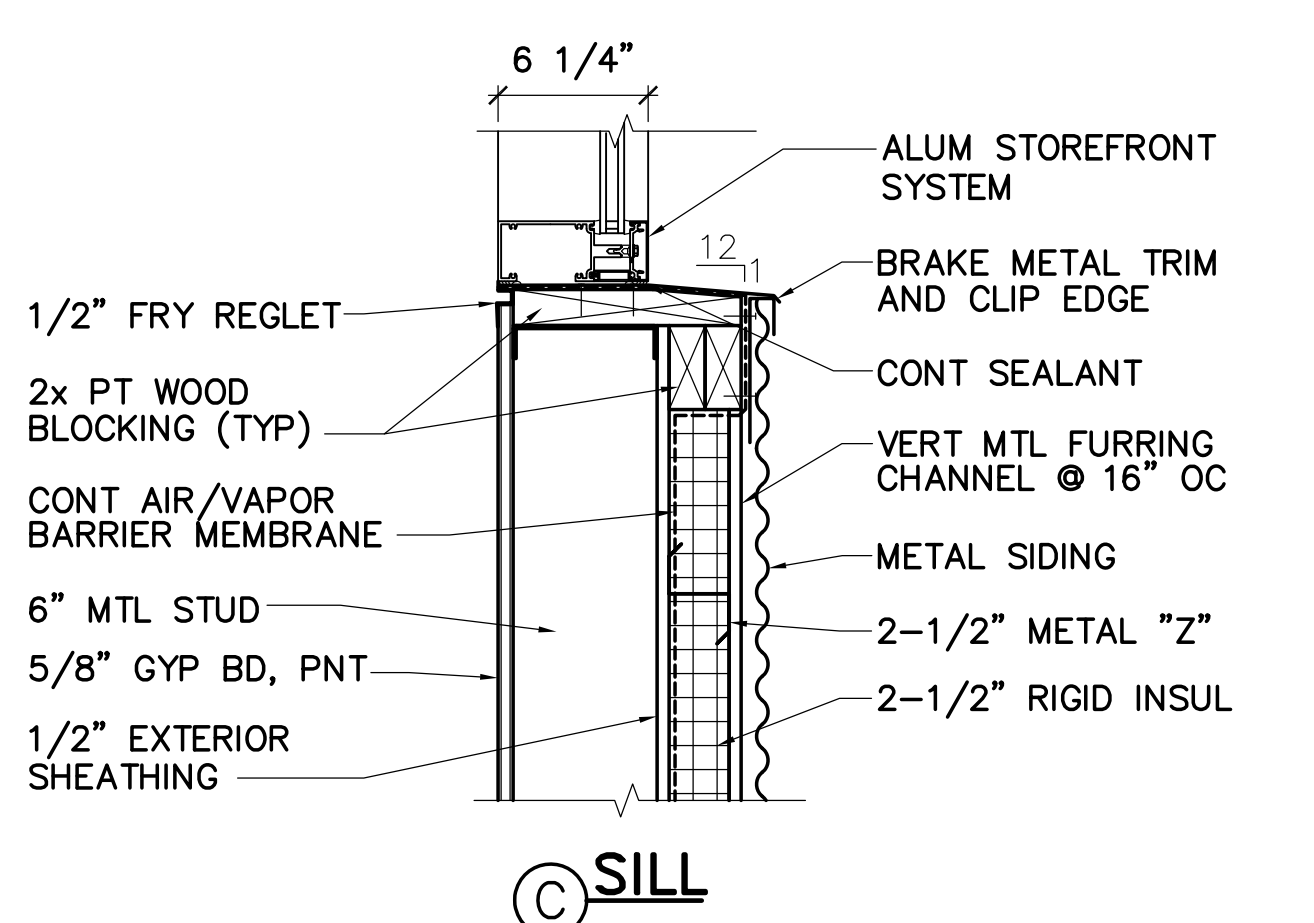
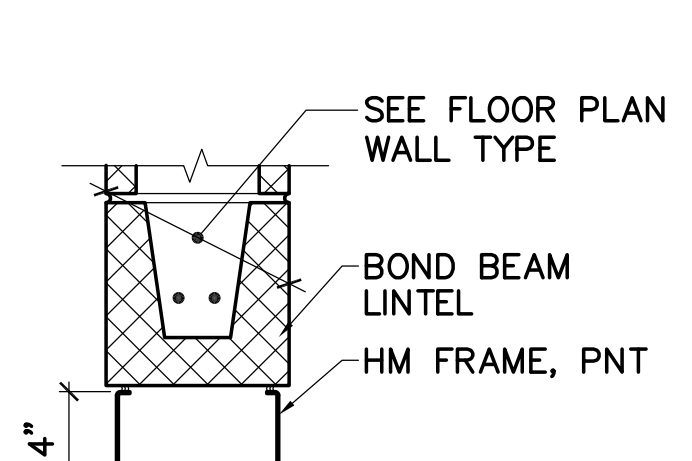
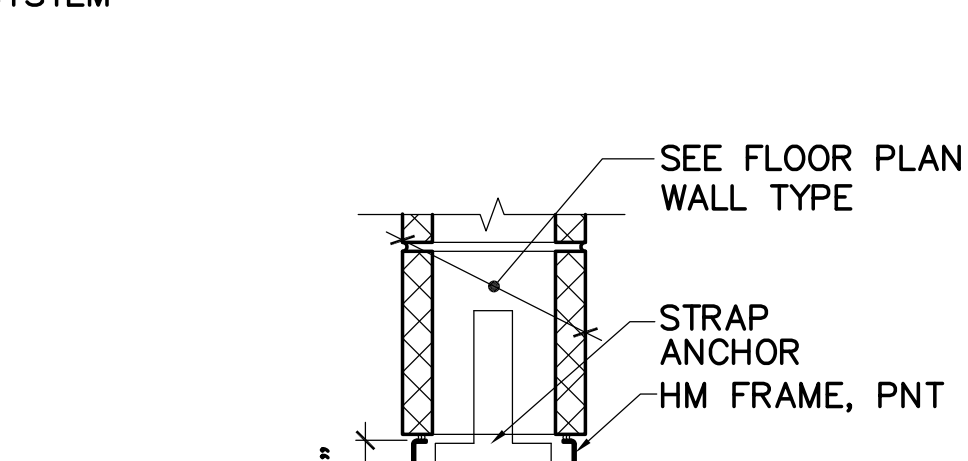
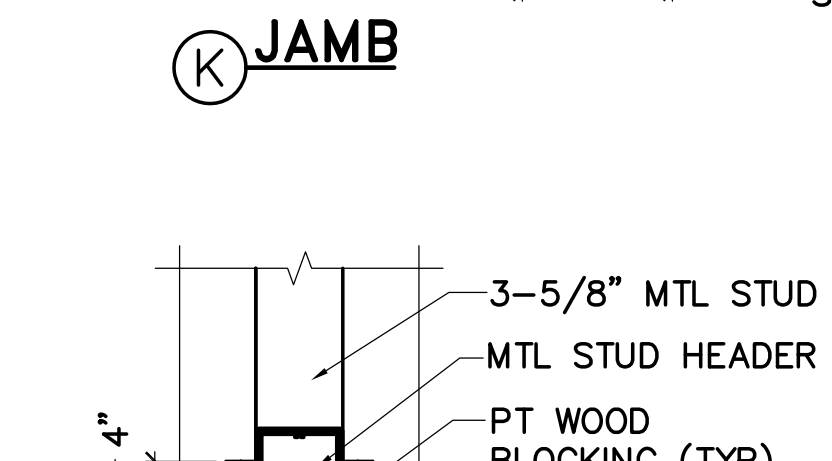
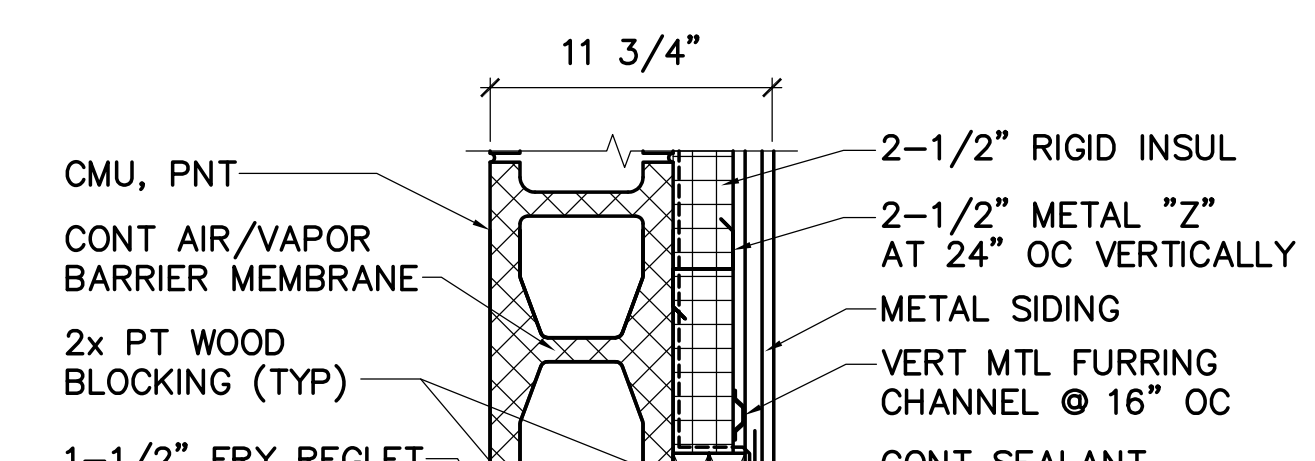
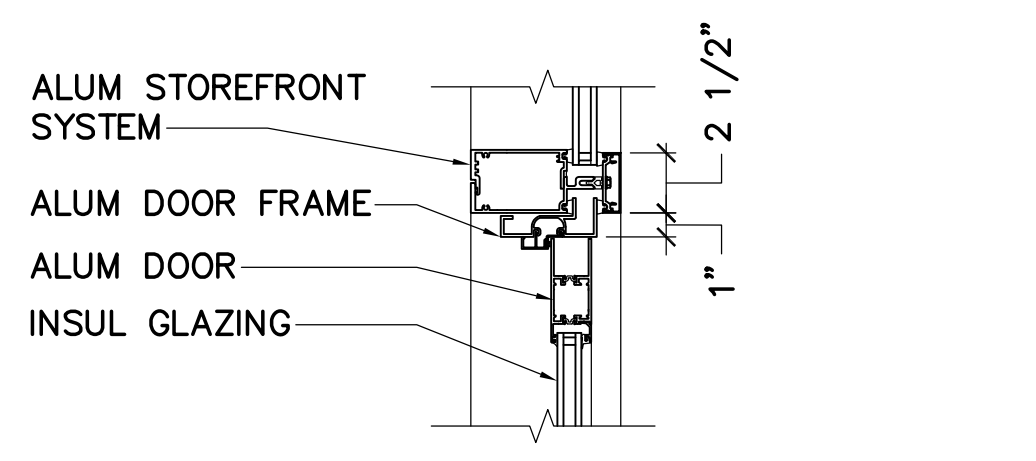
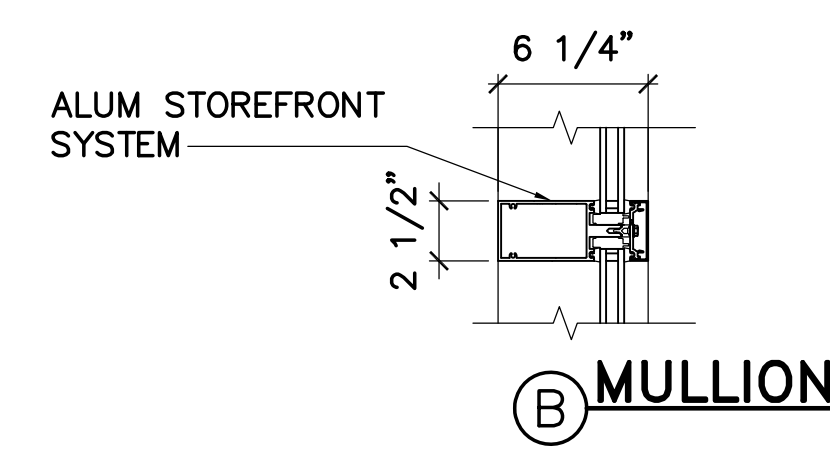
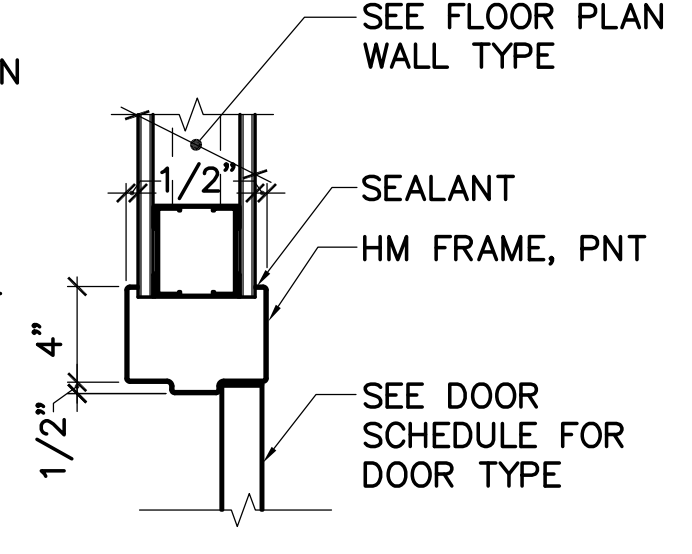
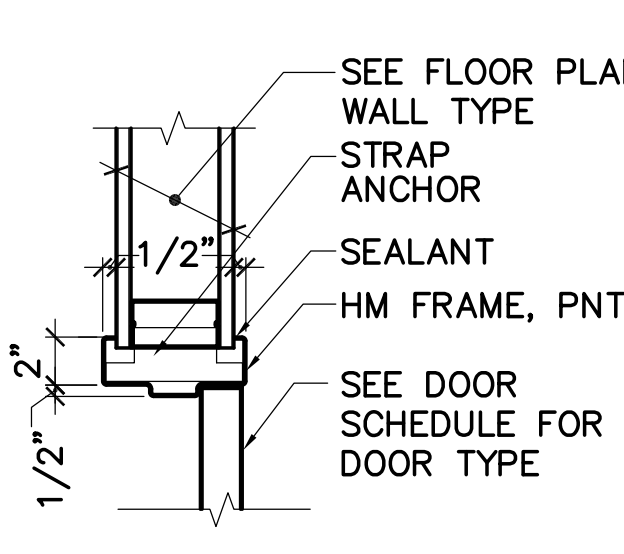
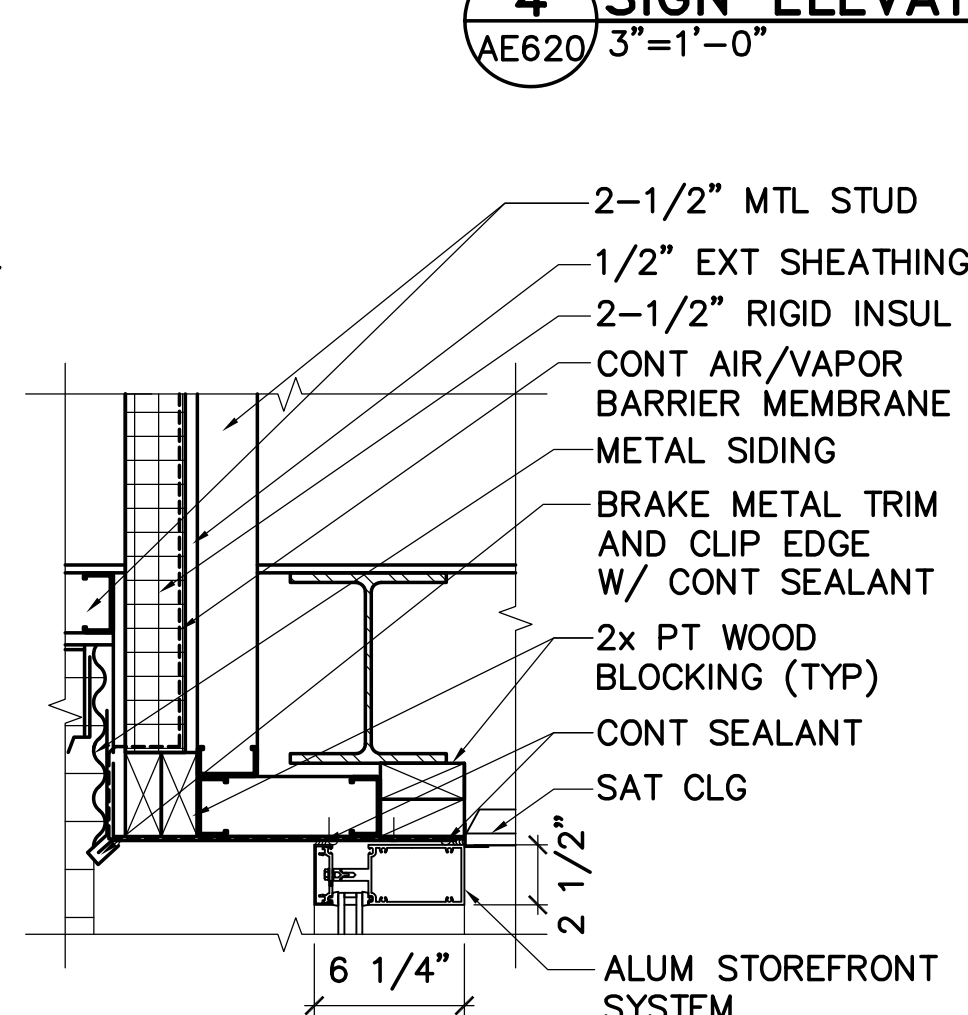
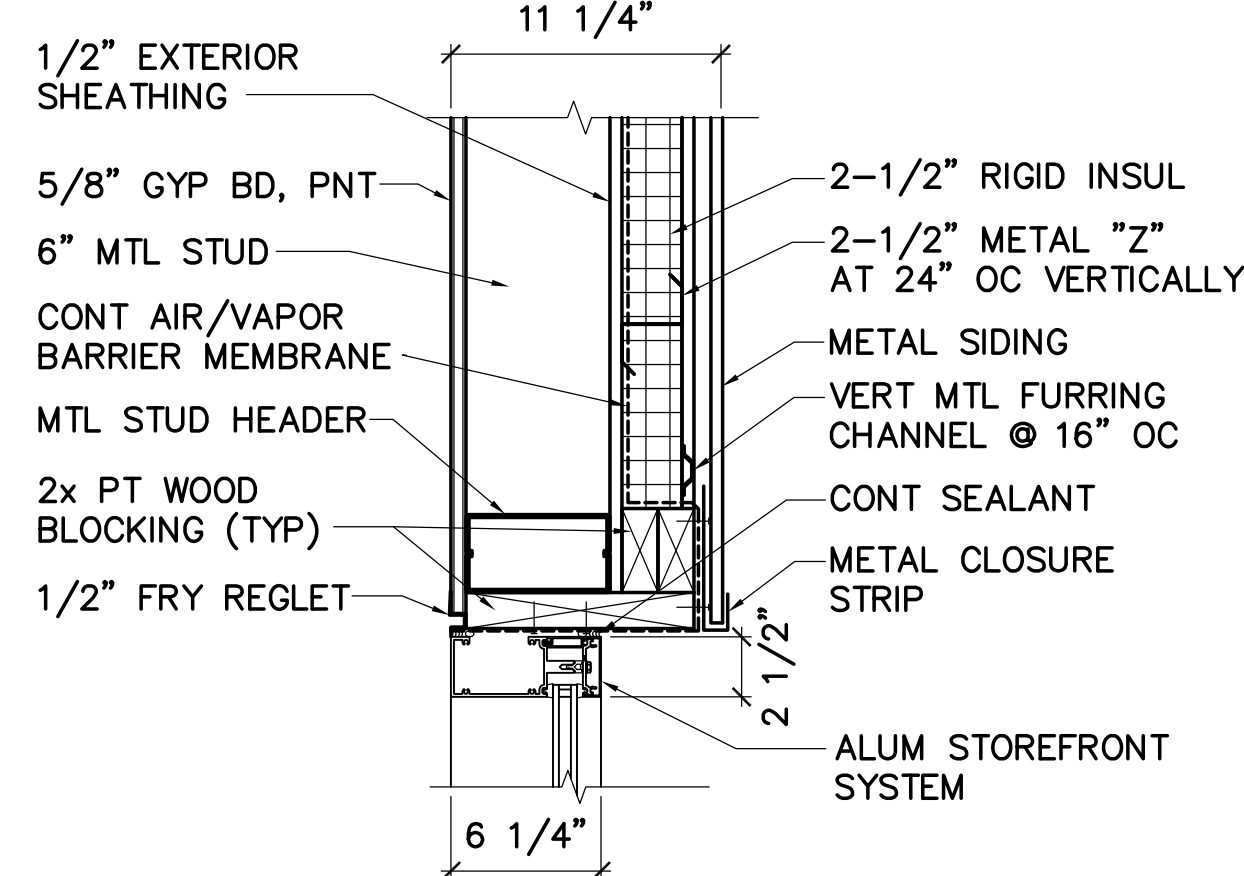
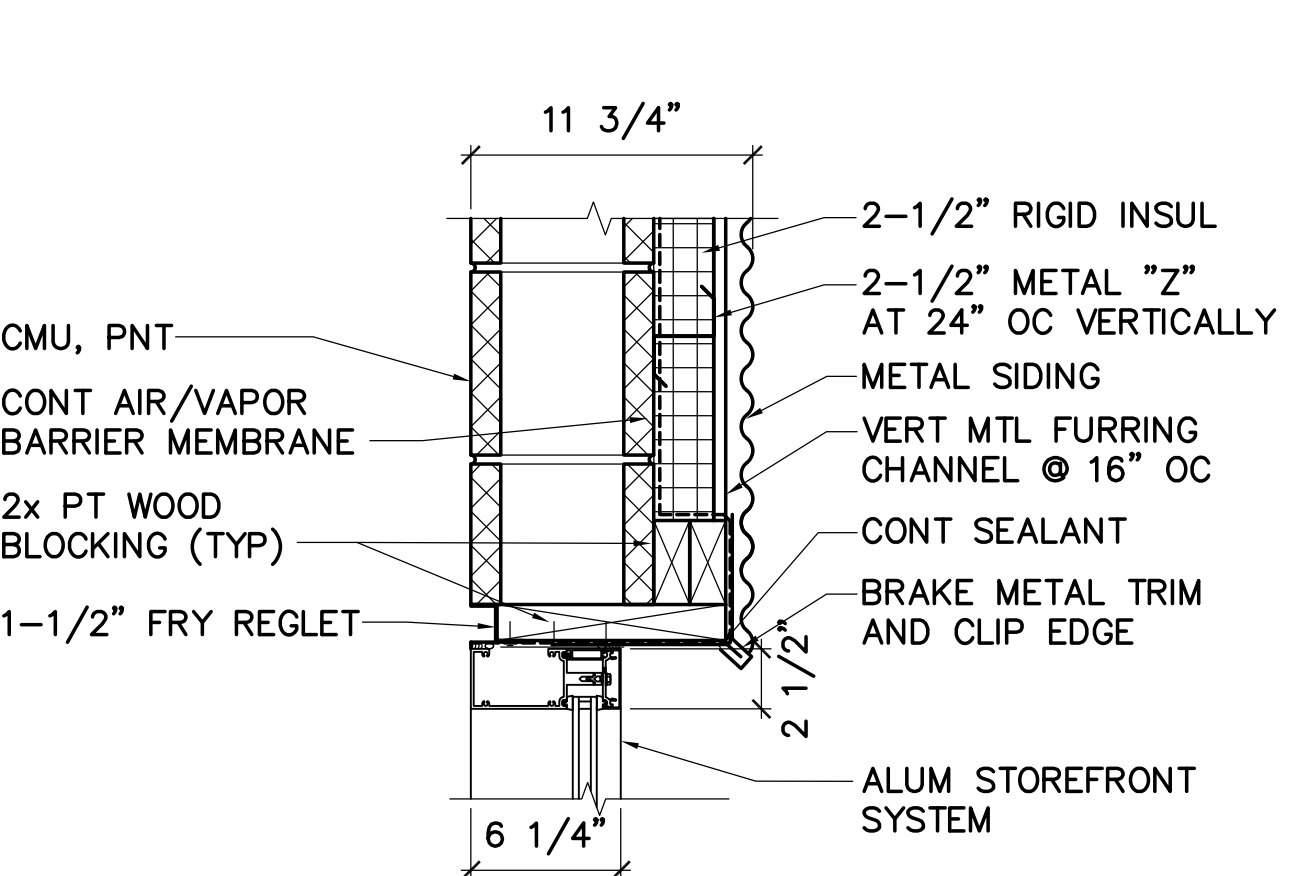
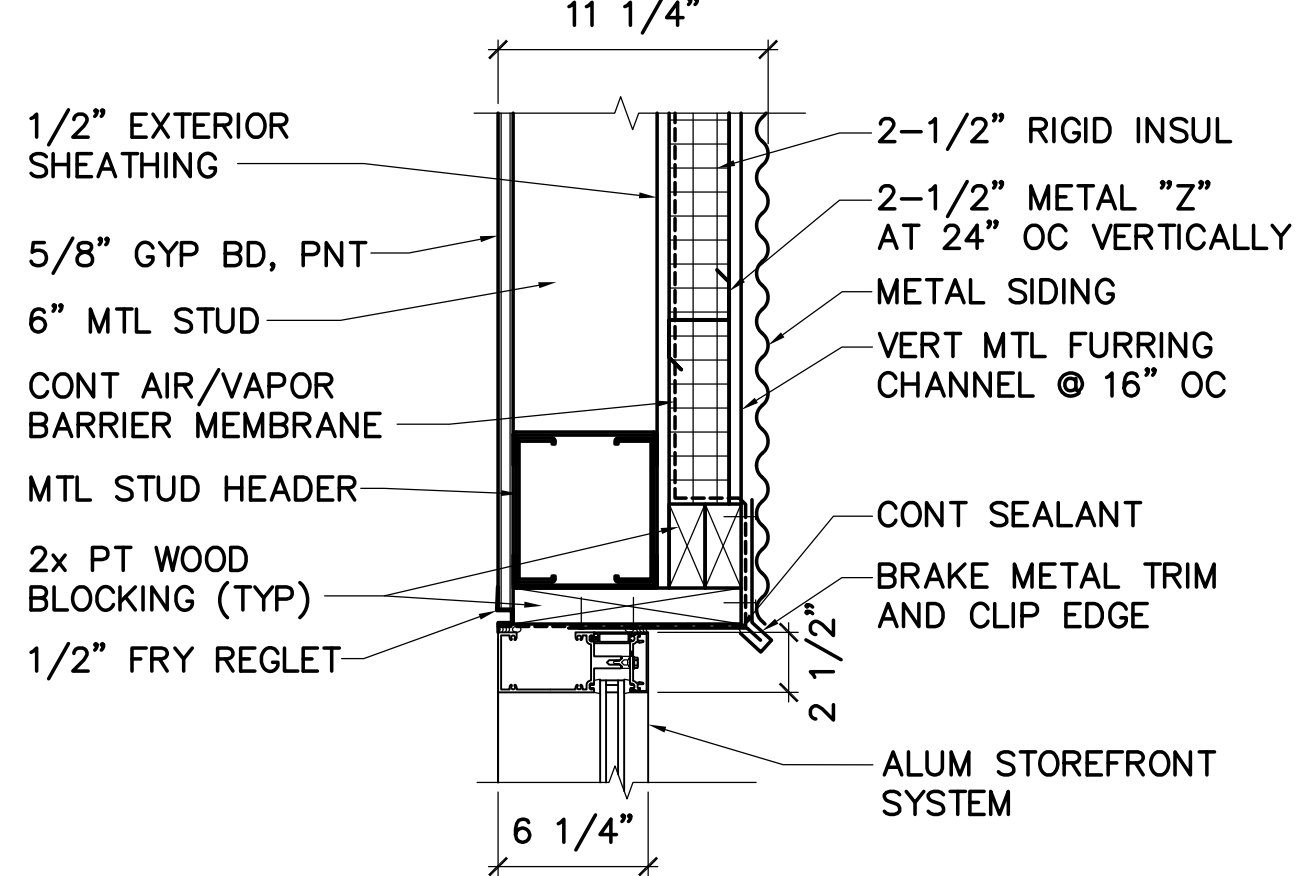
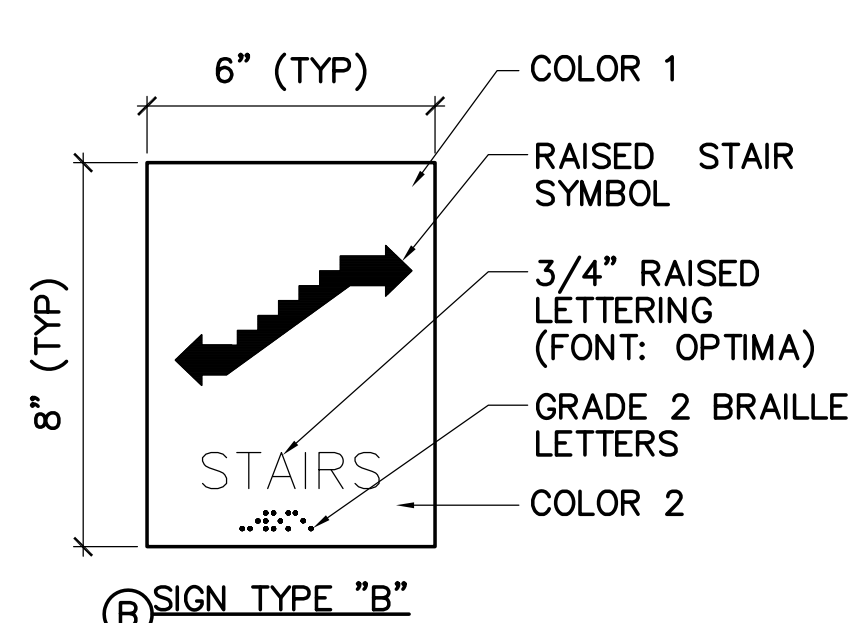
**DOOR TYPES**



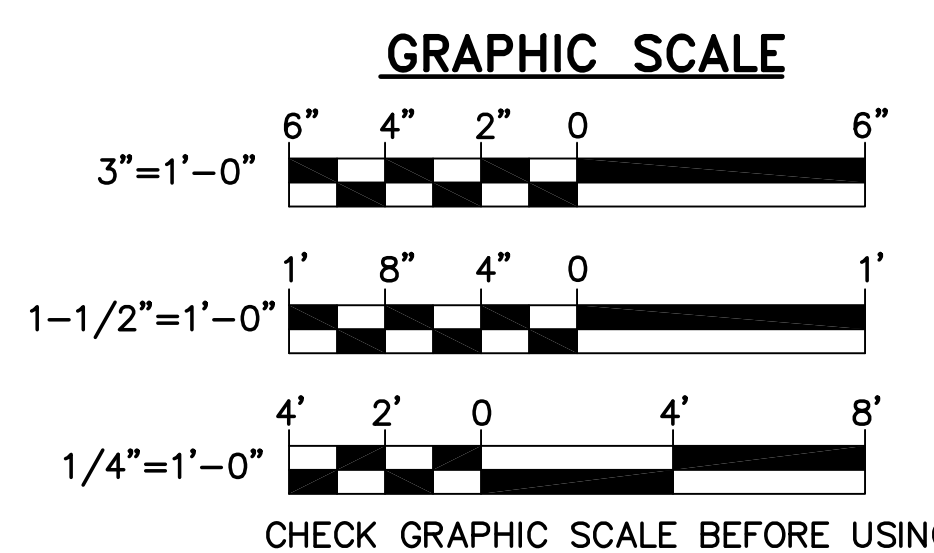
**DOOR FRAME TYPES**



**4 SIGN ELEVATIONS**  
AE620 3"=1'-0"



**3 HOLLOW METAL DOOR DETAILS**  
AE620 SCALE: 1-1/2"=1'-0"



**2 ALUMINUM STOREFRONT DETAILS**  
AE620 SCALE: 1-1/2"=1'-0"

**NOTE:** TERMINATE MEMBRANE FLASHING INTO BACK OF ALUM FRAMING, TYPICAL.



TGB  
 CET  
 JMC  
 21602.06  
 DESIGNED BY:  
 DRAWN BY:  
 CHECKED BY:  
 PROJECT:

**REICHE ELEMENTARY SCHOOL**  
**PORTLAND SCHOOL DEPARTMENT**  
 353 Cumberland Avenue  
 Portland, ME 04102

**REICHE ELEMENTARY**  
**ELEVATOR ADDITION**  
 166 Brackett Street  
 Portland, ME 04102

**DOOR, WINDOW,**  
**& STOREFRONT**  
**DETAILS, TYPES,**  
**& SCHEDULES**