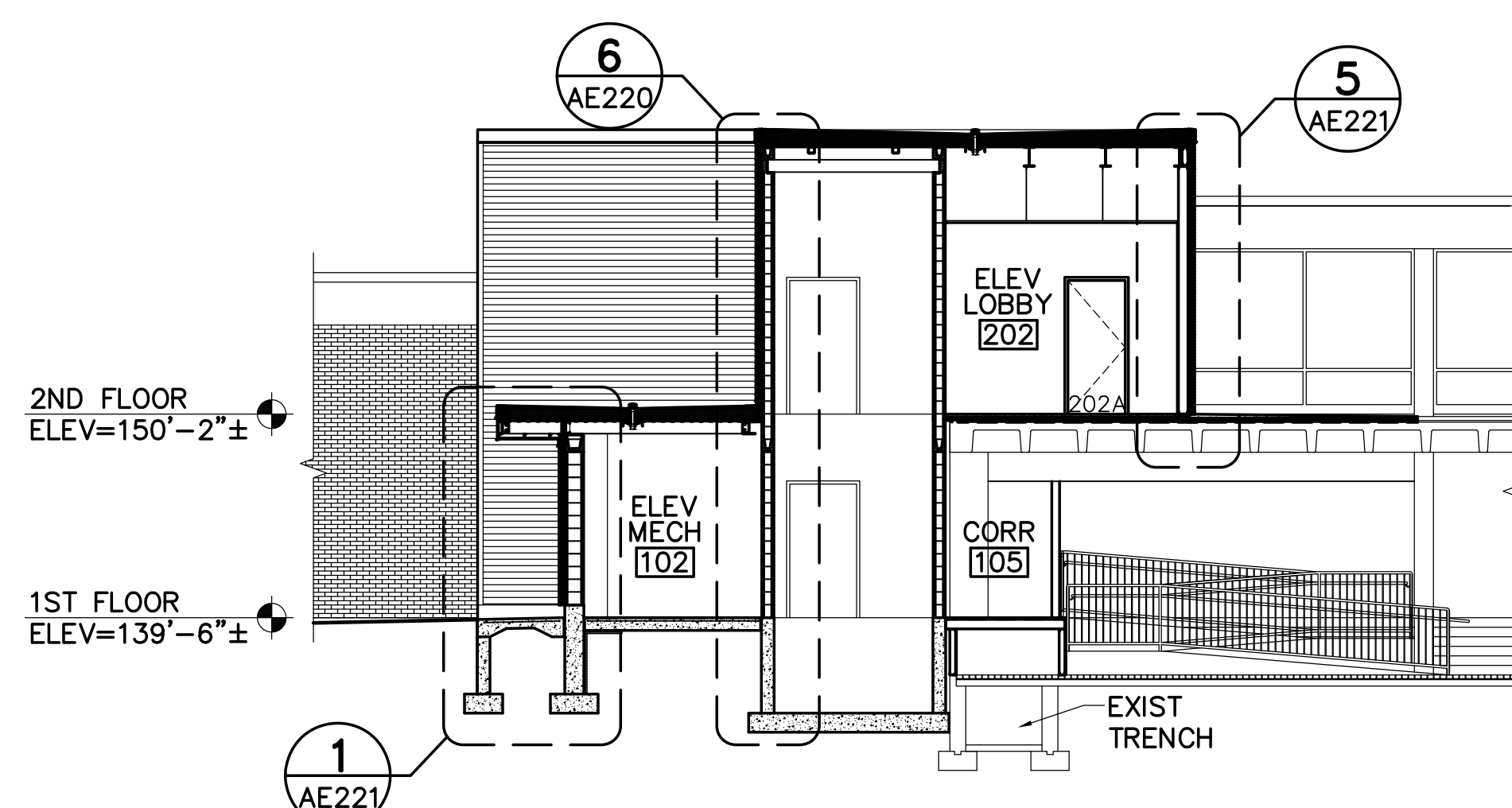


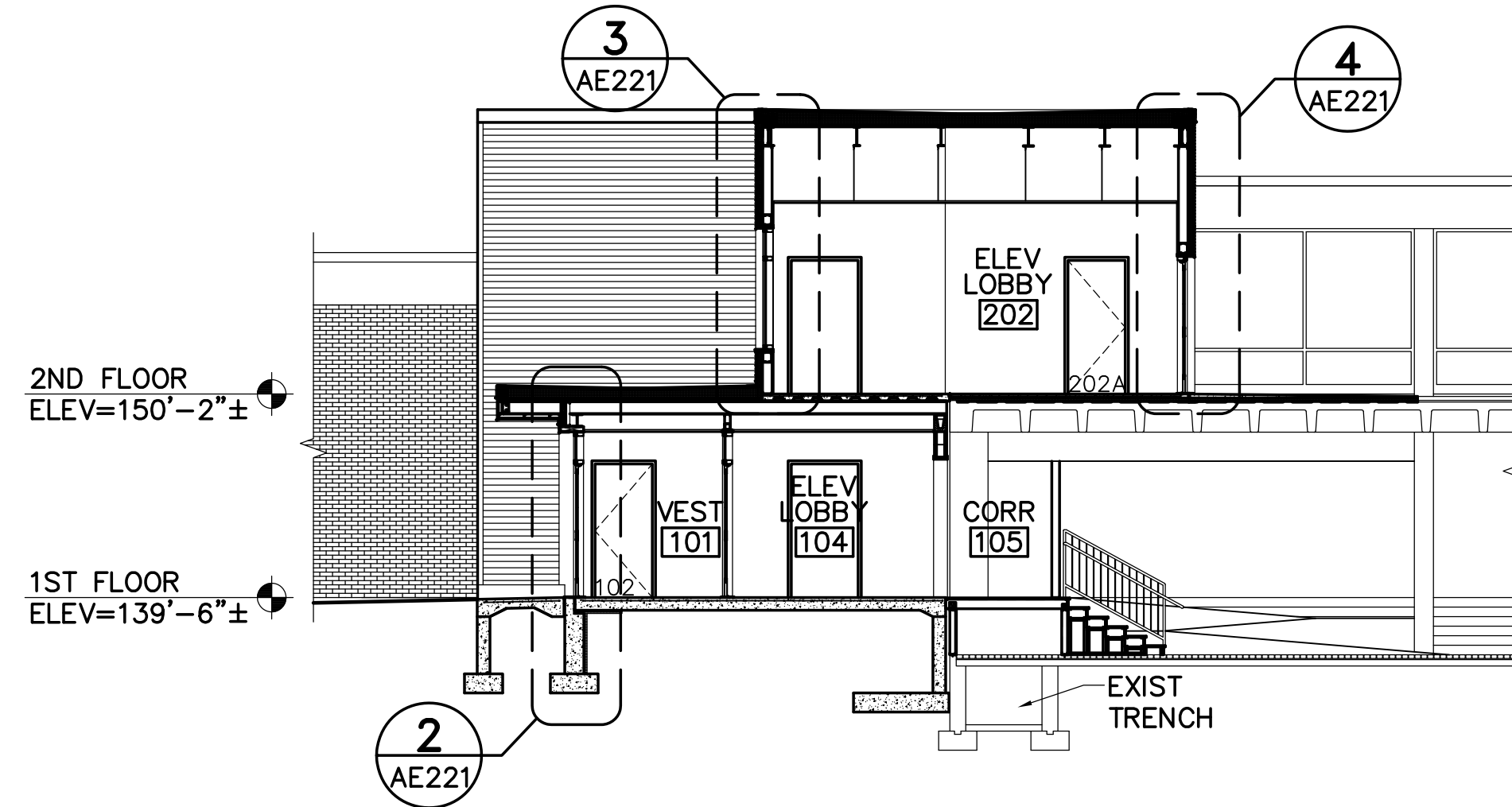
1 PARTIAL BUILDING SECTION

AE101, AE120, AE201, AE220, AE220 SCALE: 1/8"=1'-0"



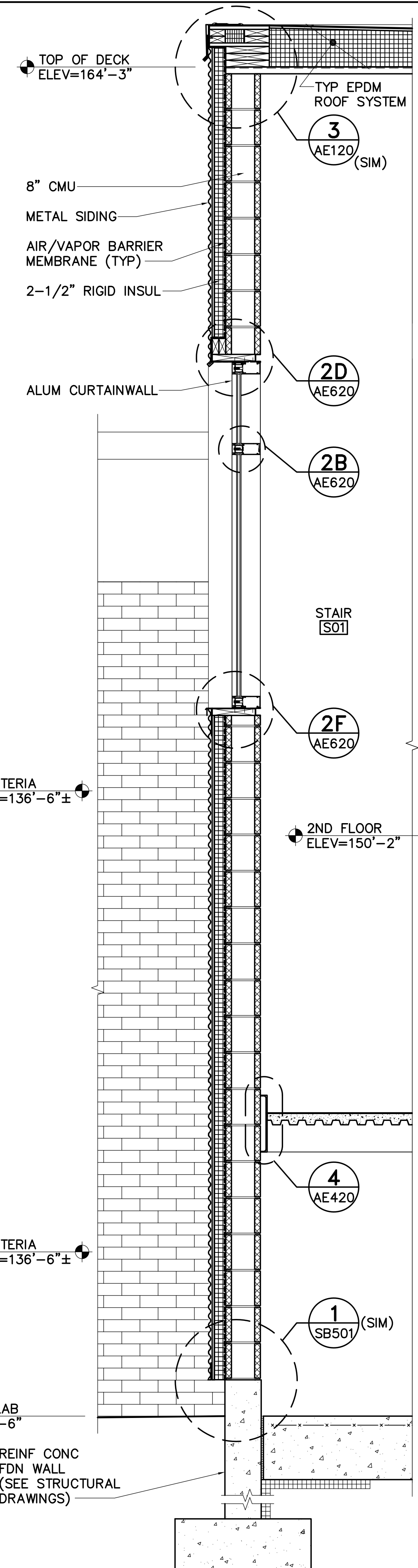
2 PARTIAL BUILDING SECTION

AE101, AE120, AE201, AE220, AE220 SCALE: 1/8"=1'-0"



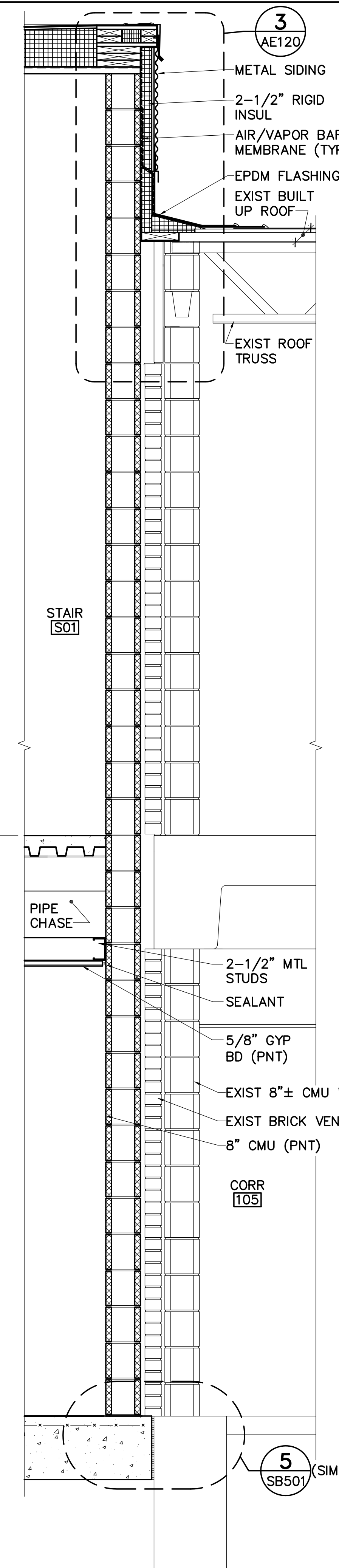
3 PARTIAL BUILDING SECTION

AE101, AE120, AE201, AE220, AE220 SCALE: 1/8"=1'-0"



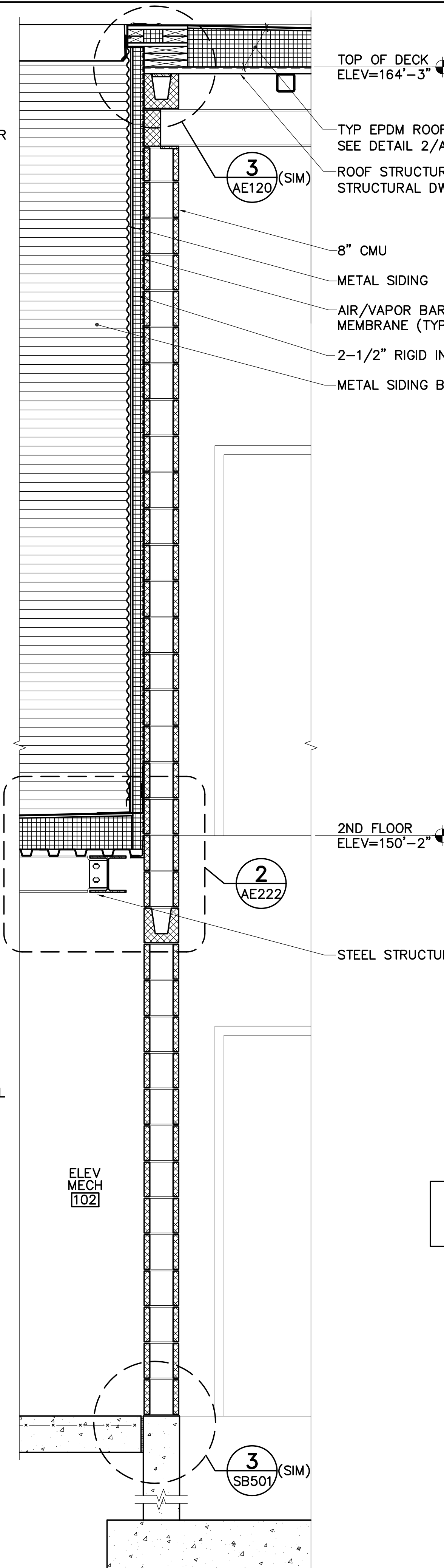
4 STAIR WALL SECTION

AE220 SCALE: 3/4"=1'-0"



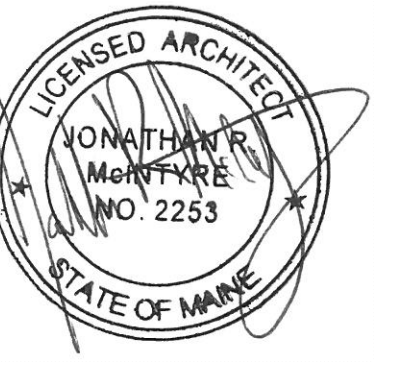
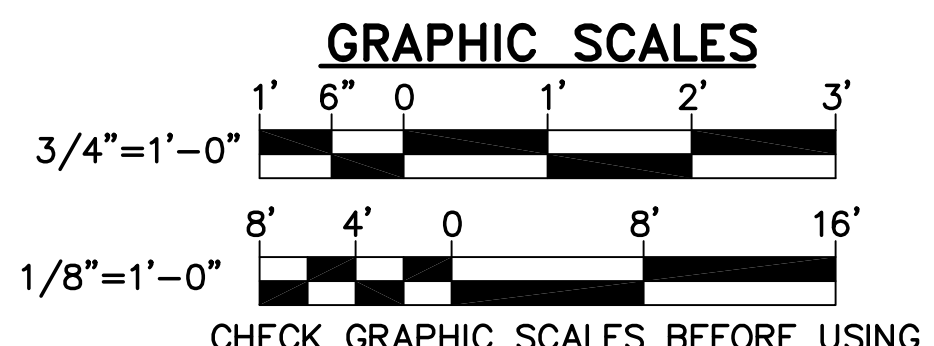
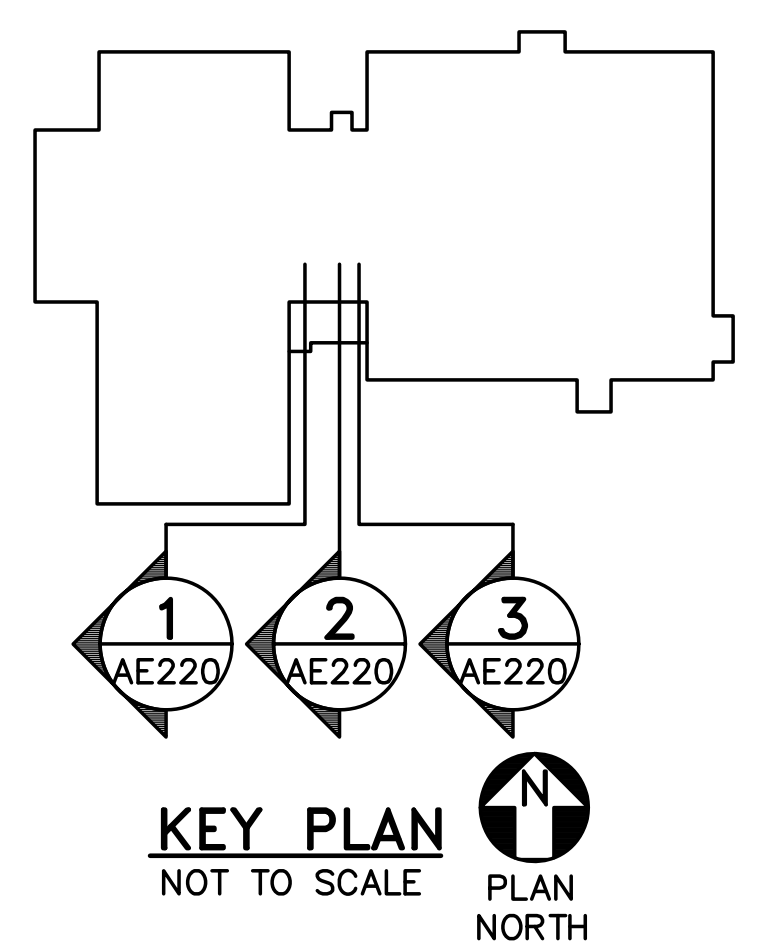
5 STAIR WALL SECTION

AE220 SCALE: 3/4"=1'-0"



6 ELEVATOR WALL SECTION

AE220 SCALE: 3/4"=1'-0"



TGB
CET JMC
DESIGNED BY:
DRAWN BY:
CHECKED BY:
PROJECT: 21602.06

REICHE ELEMENTARY SCHOOL
PORTLAND SCHOOL DEPARTMENT
353 Cumberland Avenue
Portland, ME 04102

REICHE ELEMENTARY
ELEVATOR ADDITION
166 Brackett Street
Portland, ME 04102

PARTIAL
BUILDING
SECTIONS AND
WALL SECTIONS

SCALE: AS NOTED
DATE: 04-29-2016
DWG.: AE220
SHEET: 24 OF 40