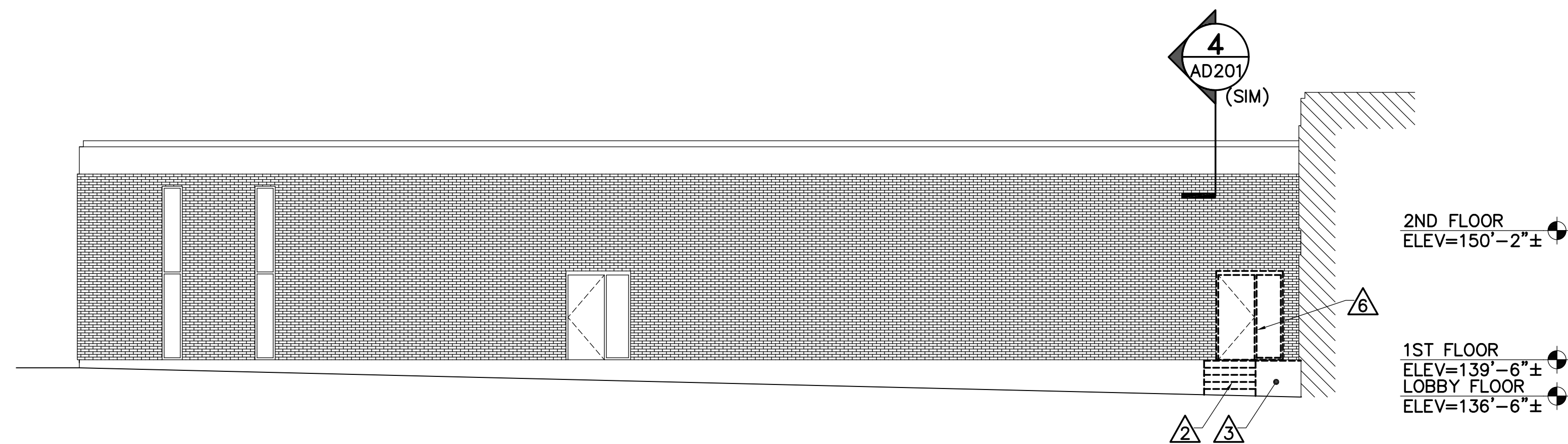
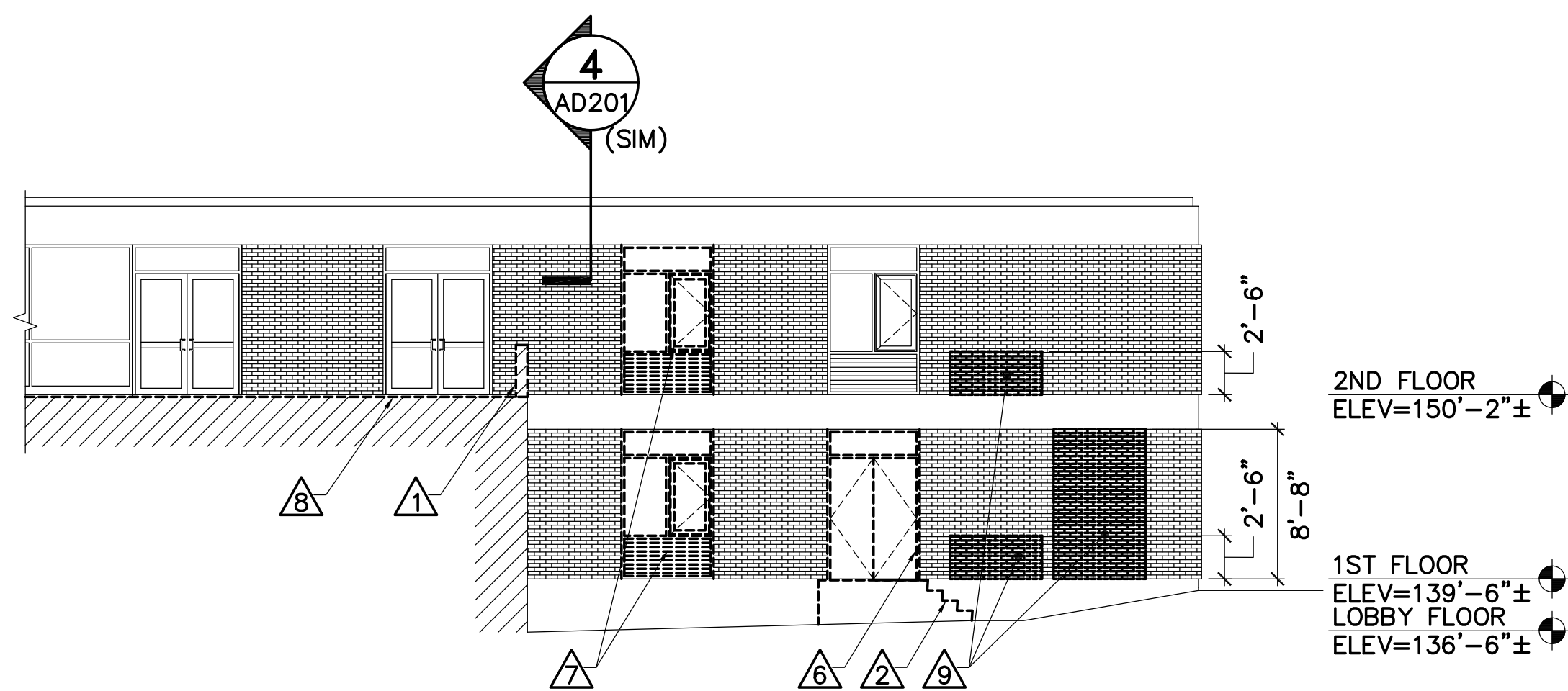


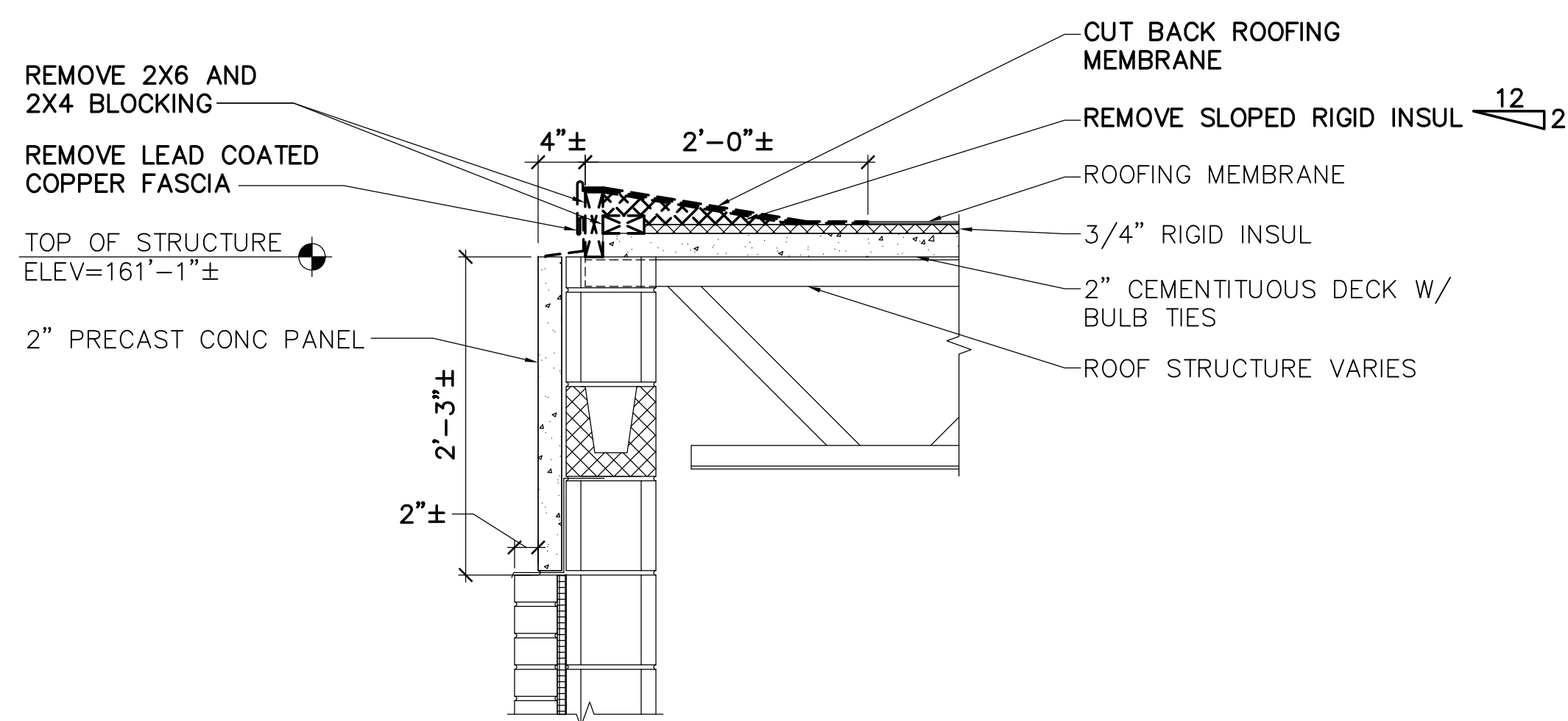
**1 PARTIAL SOUTH REMOVALS ELEVATION**  
 AD101, AD201 SCALE: 1/8"=1'-0"



**2 PARTIAL EAST REMOVALS ELEVATION**  
 AD101, AD201 SCALE: 1/8"=1'-0"



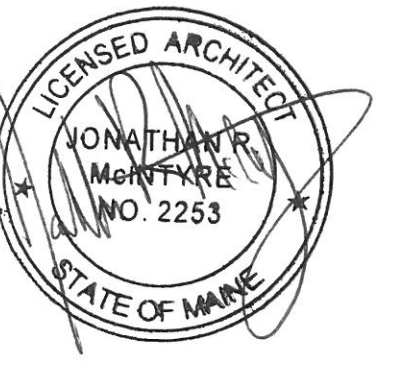
**3 PARTIAL WEST REMOVALS ELEVATION**  
 AD101, AD201 SCALE: 1/8"=1'-0"



**4 TYPICAL ROOF EDGE REMOVALS DETAIL**  
 AD201 SCALE: 1"=1'-0"

**DEMOLITION NOTES:**

- 1 EXISTING CONCRETE RAMP SLAB AND RAMP WALLS REMOVED BY OWNER. SEE STRUCTURAL PLAN 2/SD101 AND DETAILS 1/SD501 AND 2/SD501.
- 2 REMOVE EXISTING CONCRETE STAIRS, STOOP, AND METAL RAILINGS. SEE STRUCTURAL PLAN 1/SD101.
- 3 REMOVE EXISTING REINF CONCRETE PLANTER. SEE STRUCTURAL PLAN 1/SD101.
- 4 EXISTING CONCRETE PIERS REMOVED BY OWNER. SEE STRUCTURAL PLAN 1/SD101. EXISTING VESTIBULE STOREFRONT SYSTEM REMOVED BY OWNER. SALVAGE EXTERIOR DOORS AND HARDWARE FOR REINSTALLATION.
- 5 REMOVE EXISTING STOREFRONT SYSTEM.
- 6 REMOVE EXISTING DOOR, FRAME, AND SIDELITE.
- 7 REMOVE EXISTING WINDOW/LOUVER UNIT. SAVE LOUVER FOR REINSTALLATION.
- 8 REMOVE EXISTING CONCRETE TOPPING SLAB. SEE STRUCTURAL PLAN 2/SD101 AND DETAILS 1/SD501 AND 2/SD501.
- 9 SAWCUT & REMOVE ROUGH OPENING IN EXISTING MASONRY WALL.



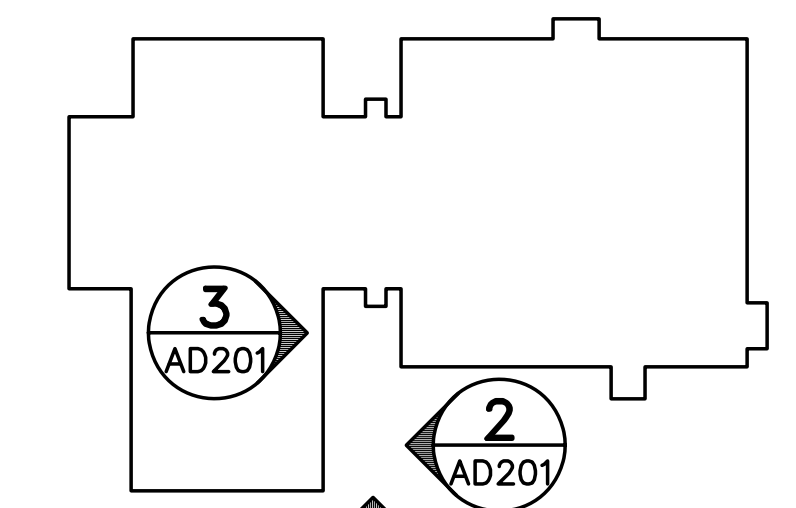
TGB  
 CET JMC  
 PROJECT: 21602.06  
 DESIGNED BY:  
 DRAWN BY:  
 CHECKED BY:  
 PROJECT:

REICHE ELEMENTARY SCHOOL  
 PORTLAND SCHOOL DEPARTMENT  
 353 Cumberland Avenue  
 Portland, ME 04102

REICHE ELEMENTARY  
 ELEVATOR ADDITION  
 166 Brackett Street  
 Portland, ME 04102

PARTIAL  
 BUILDING  
 REMOVALS  
 ELEVATIONS  
 AND DETAILS

SCALE: AS NOTED  
 DATE: 04-29-2016  
 DWG.: AD201  
 SHEET: 20 OF 40



KEY PLAN  
 NOT TO SCALE  
 PLAN NORTH

