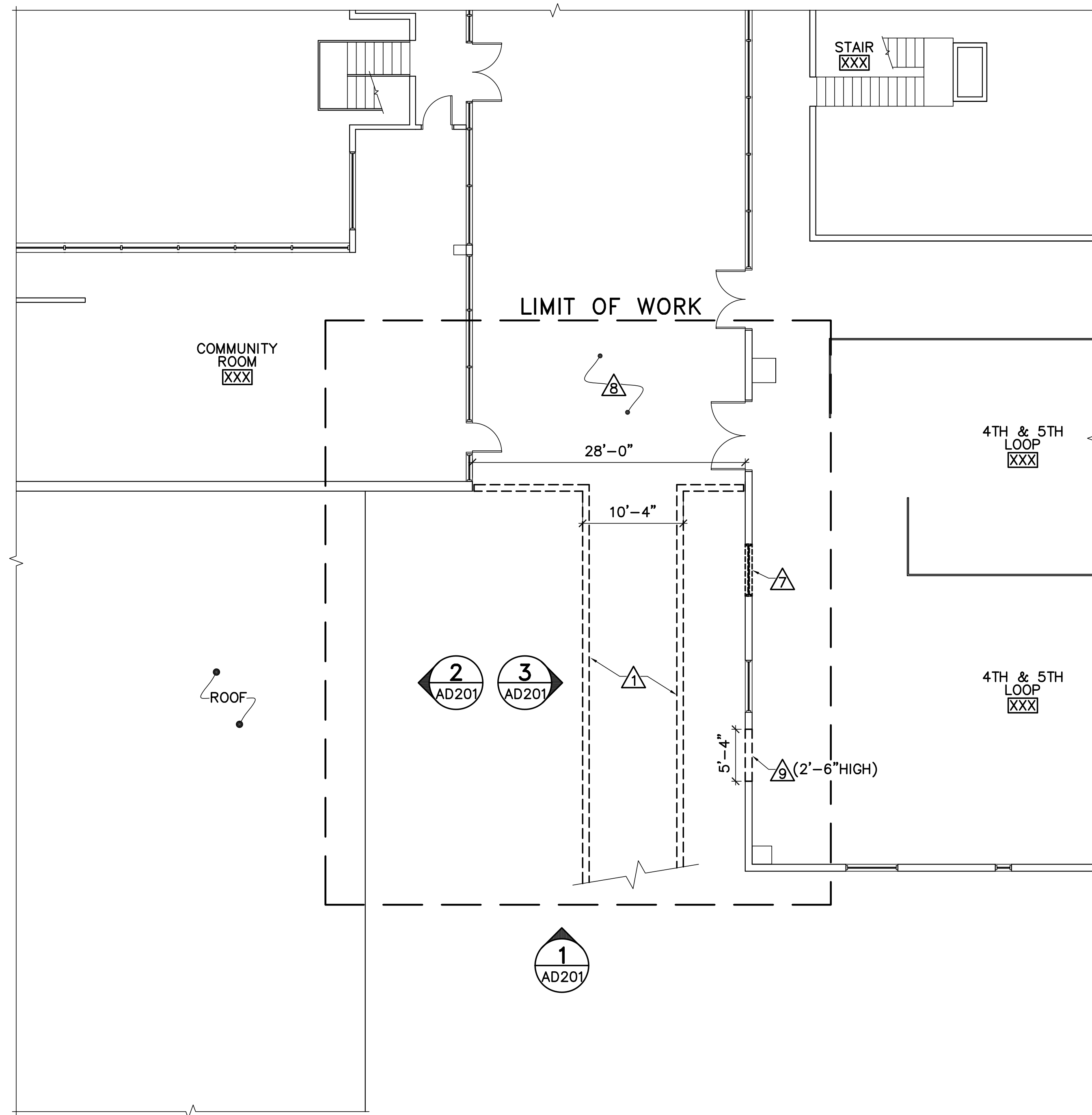


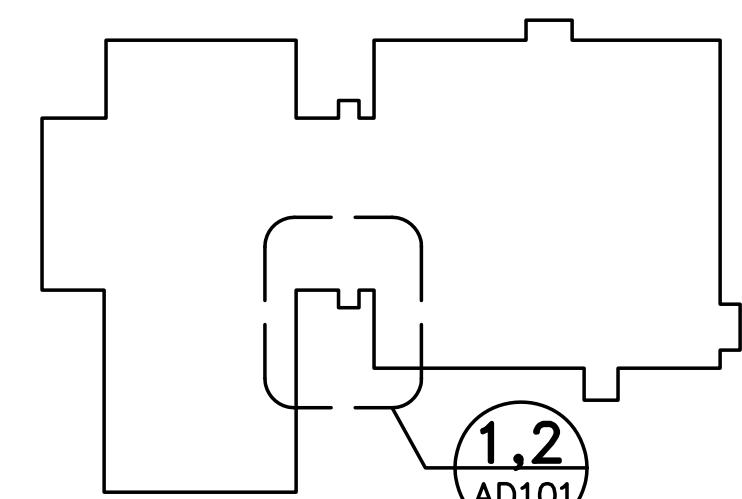
1 FIRST FLOOR REMOVALS PLAN
 AD101 AD101 SCALE: 1/8"=1'-0" PLAN NORTH



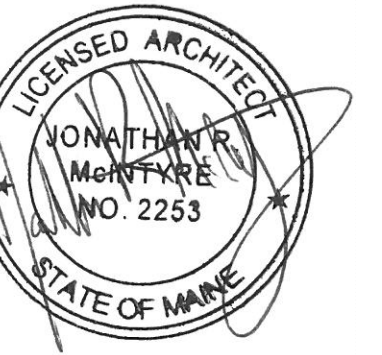
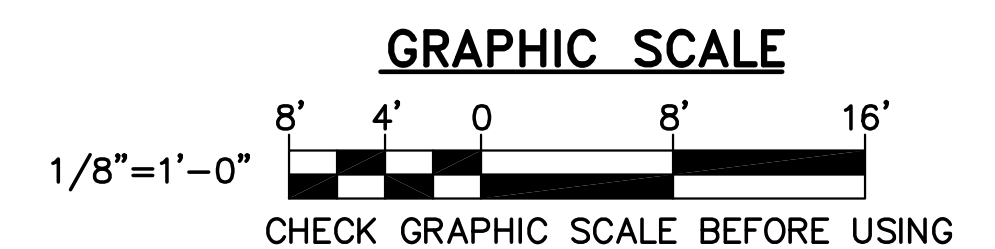
2 SECOND FLOOR REMOVALS PLAN
 AD101 AD101 SCALE: 1/8"=1'-0" PLAN NORTH

DEMOLITION NOTES:

- 1 EXISTING CONCRETE RAMP SLAB AND RAMP WALLS REMOVED BY OWNER. SEE STRUCTURAL PLAN 2/SD101 AND DETAILS 1/SD501 AND 2/SD501.
- 2 REMOVE EXISTING CONCRETE STAIRS, STOOP, AND METAL RAILINGS. SEE STRUCTURAL PLAN 1/SD101.
- 3 REMOVE EXISTING REINF CONCRETE PLANTER. SEE STRUCTURAL PLAN 1/SD101.
- 4 EXISTING CONCRETE PIERS REMOVED BY OWNER. SEE STRUCTURAL PLAN 1/SD101. EXISTING VESTIBULE STOREFRONT SYSTEM REMOVED BY OWNER. SALVAGE EXTERIOR DOORS AND HARDWARE FOR REINSTALLATION.
- 5 REMOVE EXISTING STOREFRONT SYSTEM.
- 6 REMOVE EXISTING DOOR, FRAME, AND SIDELITE.
- 7 REMOVE EXISTING WINDOW/LOUVER UNIT. SAVE LOUVER FOR REINSTALLATION.
- 8 REMOVE EXISTING CONCRETE TOPPING SLAB. SEE STRUCTURAL PLAN 2/SD101 AND DETAILS 1/SD501 AND 2/SD501.
- 9 SAWCUT & REMOVE ROUGH OPENING IN EXISTING MASONRY WALL.
- 10 REMOVE EXISTING STUD WALL PARTITION.
- 11 SALVAGE EXISTING PLATFORM LIFT, CONTROLS AND ASSOCIATED HARDWARE AND TURN OVER TO OWNER.
- 12 REMOVE SECTION OF DEMOUNTABLE PARTITION.



KEY PLAN
 NOT TO SCALE PLAN NORTH



TGB
 CET JMC
 21602.06
 DESIGNED BY:
 DRAWN BY:
 CHECKED BY:
 PROJECT:

REICHE ELEMENTARY SCHOOL
 PORTLAND SCHOOL DEPARTMENT
 353 Cumberland Avenue
 Portland, ME 04102

REICHE ELEMENTARY
 ELEVATOR ADDITION
 166 Brackett Street
 Portland, ME 04102

FIRST AND
 SECOND FLOOR
 REMOVALS PLAN

SCALE: AS NOTED
 DATE: 04-29-2016

DWG.: AD101

SHEET: 19 OF 40