

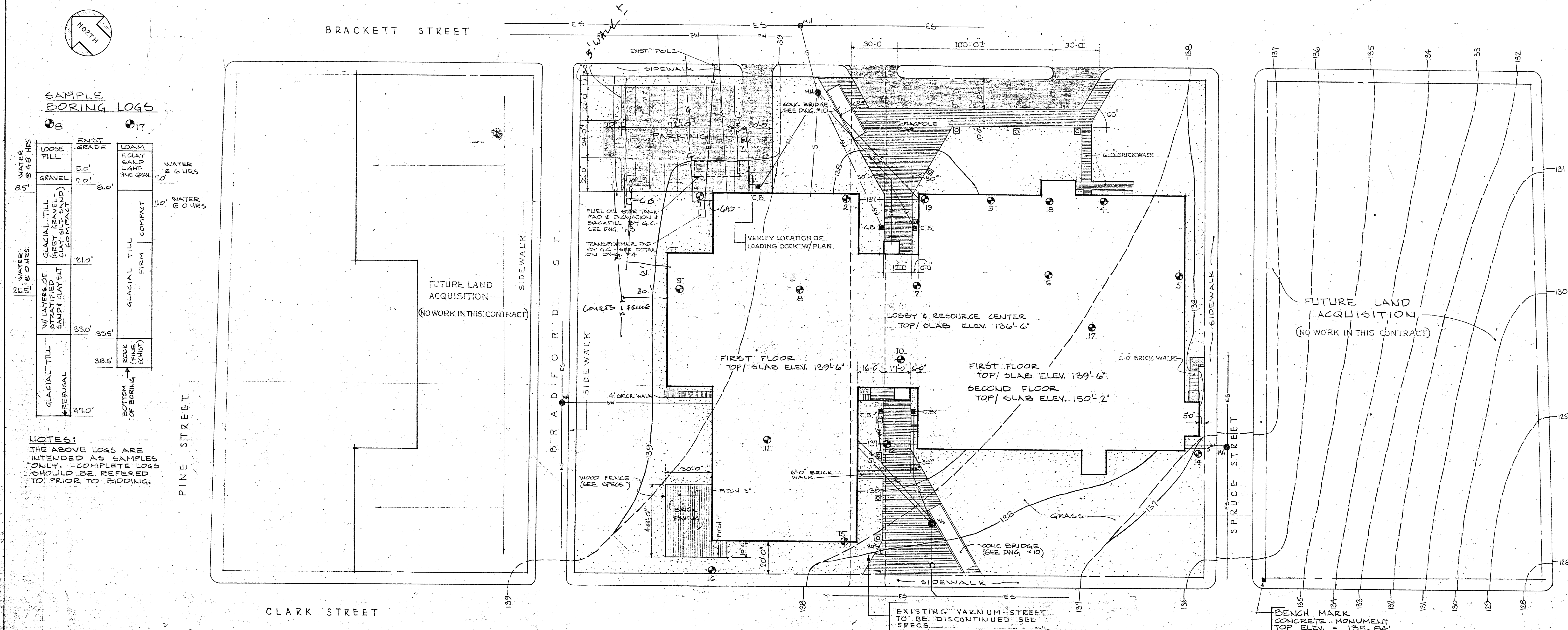
portland west elementary school

DRAWING INDEX

- 1 SITE PLAN & DETAILS
- 2 FOUNDATION PLAN
- 3 FIRST FLOOR PLAN
- 4 SECOND FLOOR PLAN
- 5 DOOR & ROOM SCHEDULES
- 6 ELEVATIONS
- 7 ELEVATIONS & SECTIONS
- 8 WALL SECTIONS
- 9 WALL SECTIONS
- 10 WALL SECTIONS
- 11 STAIR & MISC. DETAILS
- 12 ROOF PLAN & DETAILS
- 5-1 2ND FLOOR FRAMING PLAN
- 5-2 ROOF FRAMING PLAN
- 5-3 STRUCTURAL DETAILS
- 5-4 BRIDGES & STEEL FRAMING DETAILS
- P-1 PLUMBING - 1ST FLOOR
- P-2 PLUMBING - 2ND FLOOR
- P-3 PLUMBING - TOILET DETAILS
- P-4 PLUMBING - DETAILS
- H-1 FIRST FLOOR - HVAC
- H-2 SECOND FLOOR - HVAC
- H-3 HEATING - PIPING
- H-4 HEATING - DETAILS
- E-1 FIRST FLOOR LIGHTING PLANS
- E-2 SECOND FLOOR LIGHTING PLANS
- E-3 FIRST FLOOR POWER PLANS
- E-4 SECOND FLOOR POWER PLANS
- E-5 RIGER DIAGRAM - SITE PLAN - DETAILS

107 ELM STREET
PORTLAND, MAINE 04102

STATE OF MAINE
APPROVE
3-27-72
Richard A. Condit



SITE PLAN
SCALE: 1" = 30'

SAMPLE BORING LOGS

WATER	EXIST. GRADE	LOAM	WATER
8' 48" HRS	85.0'	21.0'	6 HRS
7' 0" HRS	86.0'	38.6'	0 HRS
26' 14" HRS	87.0'	41.0'	

NOTES:
THE ABOVE LOGS ARE INTENDED AS SAMPLES ONLY. COMPLETE LOGS SHOULD BE REFERRED TO PRIOR TO BIDDING.

TREES & SHRUBS:
THE GENERAL CONTRACTOR SHALL REMOVE ALL EXISTING TREES & SHRUBS EXCEPT THOSE SELECTED BY THE ARCHITECT TO REMAIN.

SITE PLAN LEGEND

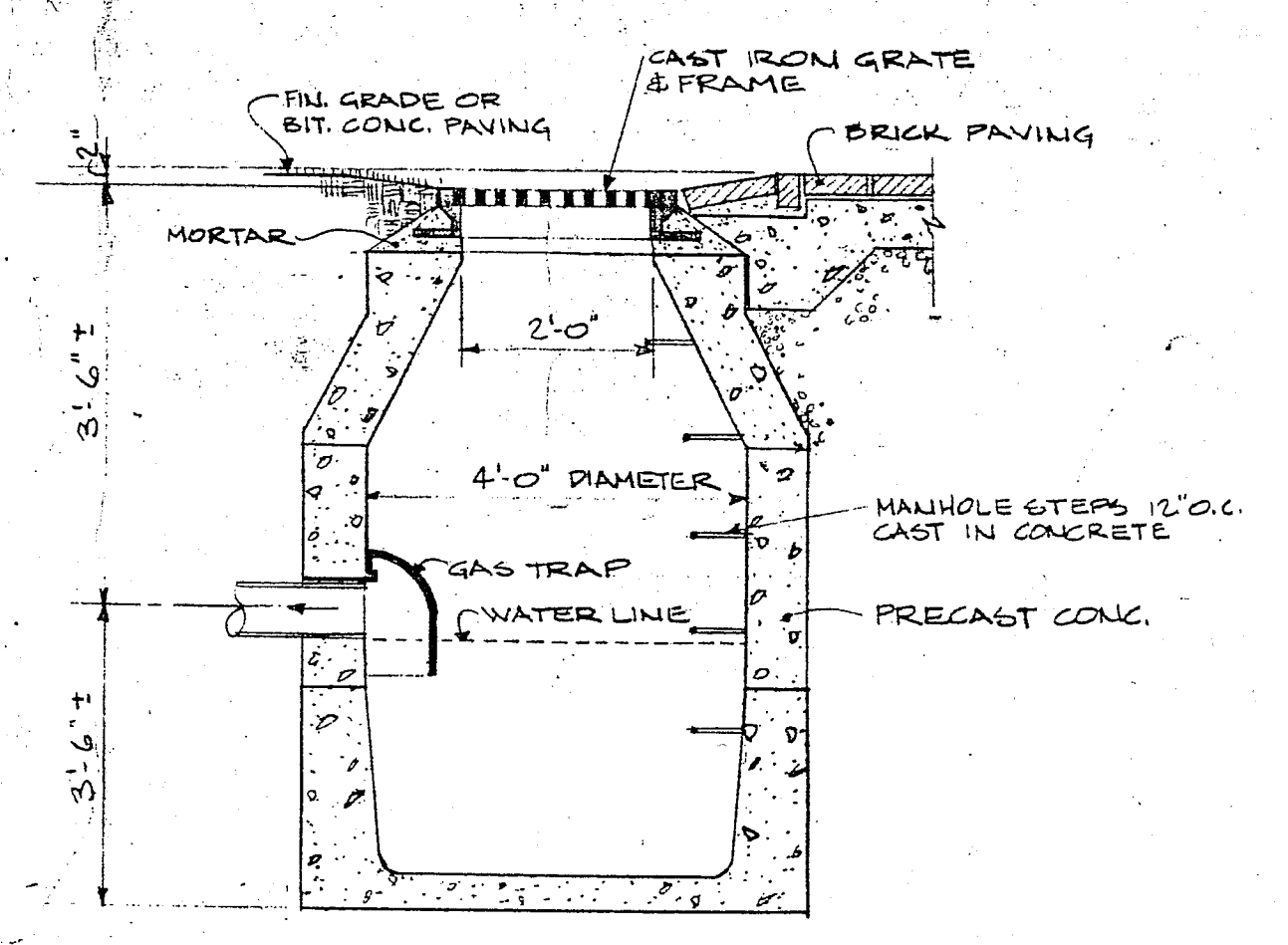
	GRASS		BRICK PAVING
	BITUMINOUS CONC. PAVING		MANHOLE (NEW BY G.C.)
	EXISTING CONTOUR LINE		CATCH BASIN (NEW BY G.C.)
	NEW FINISH CONTOUR LINE		BORING - BORINGS LOG IS AVAILABLE AT ARCHITECT OFFICE FOR REVIEW.
	PROPERTY LINE & CONTRACT LIMIT		YARD POST LIGHT - CONC. BASE BY G.C. (FOR BASE DETAIL SEE DWG. E-3) (FOR YARD LIGHTS ATTACHED TO BRIDGE RAILS SEE DRAWING *10)
	W - WATER SERVICE (EW - EXISTING WATER)		
	E - ELECTRIC SERVICE		
	S - SEWER (ES - EXISTING SEWER)		
	SW - STORM WATER		

ABBREVIATIONS

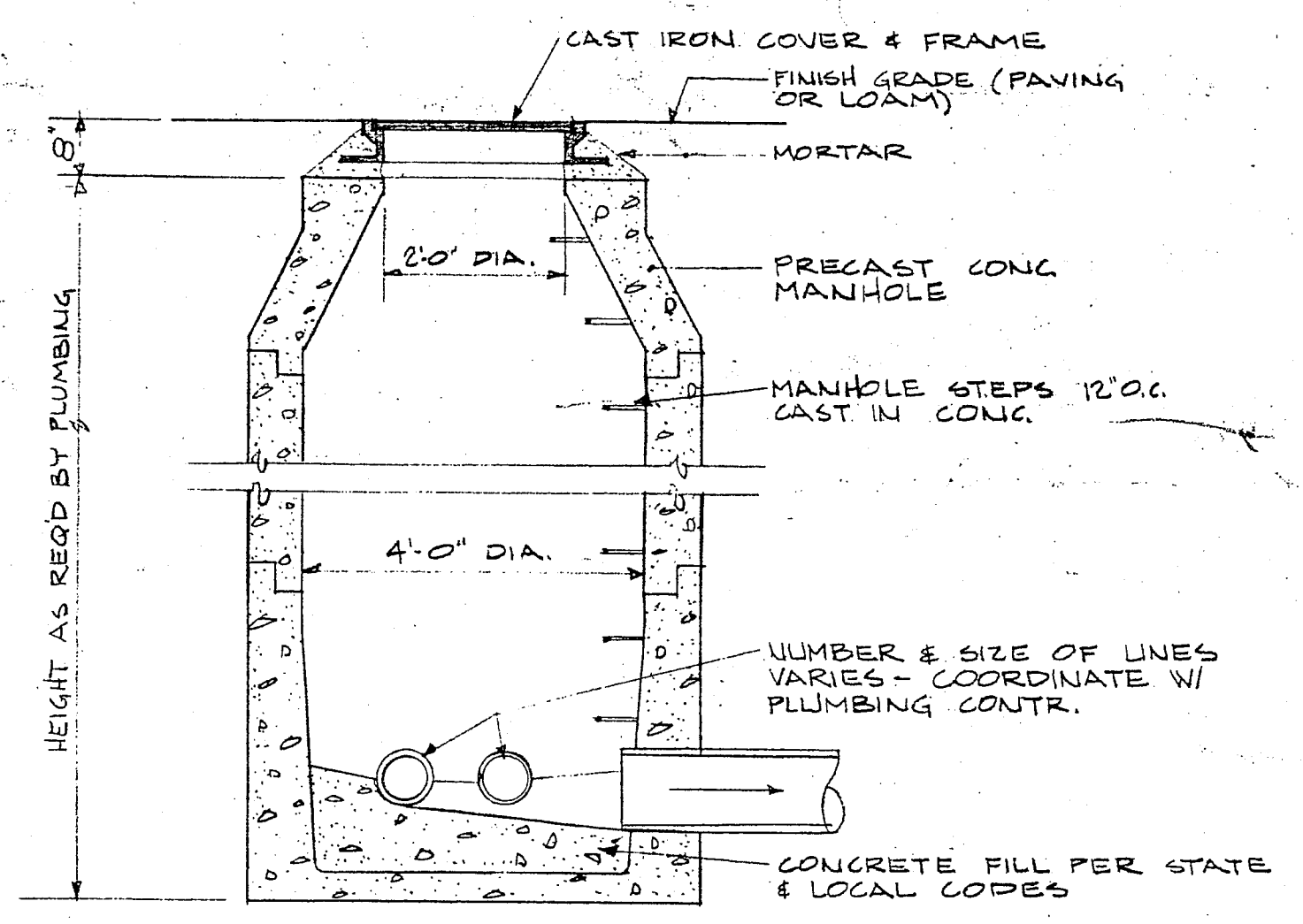
ADJ.	ADJUSTABLE
A.F.F.	ABOVE FINISH FLOOR
ALUM.	ALUMINUM
BL.	BLOCK
C.L.	CENTER LINE
C.B.	CHALK BOARD
C.I.	CAST IRON
CONT.	CONTINUOUS
CONC.	CONCRETE
COL.	COLUMN
D.	DEPTH
D.F.	DRINKING FOUNTAIN
DWG.	DRAWING
EXP.	EXPANSION
ELEV.	ELEVATION
ENC.	ELECTRIC WATER COOLER
FTG.	FOOTING
FDJ.	FOUNDATION
FIN.	FINISH
H.	HEIGHT
JT.	JOINT
L.C.C.	LEAD COATED COPPER
L.	LONG
LAV.	LAVATORY
MIN.	MINIMUM
M. OR MET.	METAL
M.O.	MASONRY OPENING
N.T.S.	NOT TO SCALE
NIC.	NOT IN CONTRACT
O.C.	ON CENTERS
PTP.	PAINTED
PRTN.	PARTITION
RD.	ROOF DRAIN
S.J.	STEEL JOIST
SIM.	SIMILAR
ST.	STEEL
STR.	STRUCTURAL
TYR.	TYPICAL
THOLD.	THRESHOLD
TB.	TACK BOARD
UR.	URINAL
W/	WITH
W/O.	WITHOUT
W.W.M.	WELDED WIRE MESH
WD.	WOOD
W.C.	WATER CLOSET
C.J.	CONTROL JOINT

LEGEND

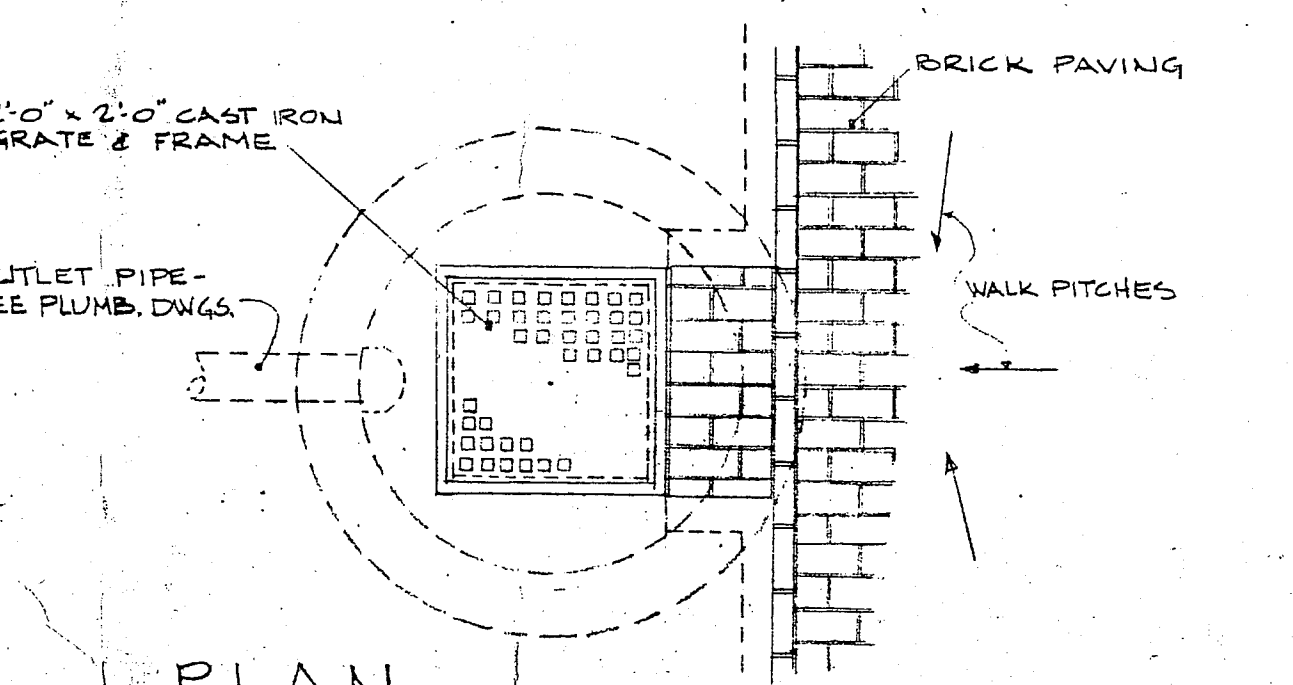
	CONCRETE
	BRICK
	MASONRY BLOCK
	RIGID INSULATION
	PLASTER ON GYPSUM LATH
	PLASTER ON WIRE LATH
	CEMENTITIOUS DECKING
	BATT INSULATION
	WOOD FRAMING OR BLOCKING
	FINISH WOOD (MILLWORK)
	STRUCTURAL STEEL
	METAL STUD & PLASTER PARTITION IN PLAN



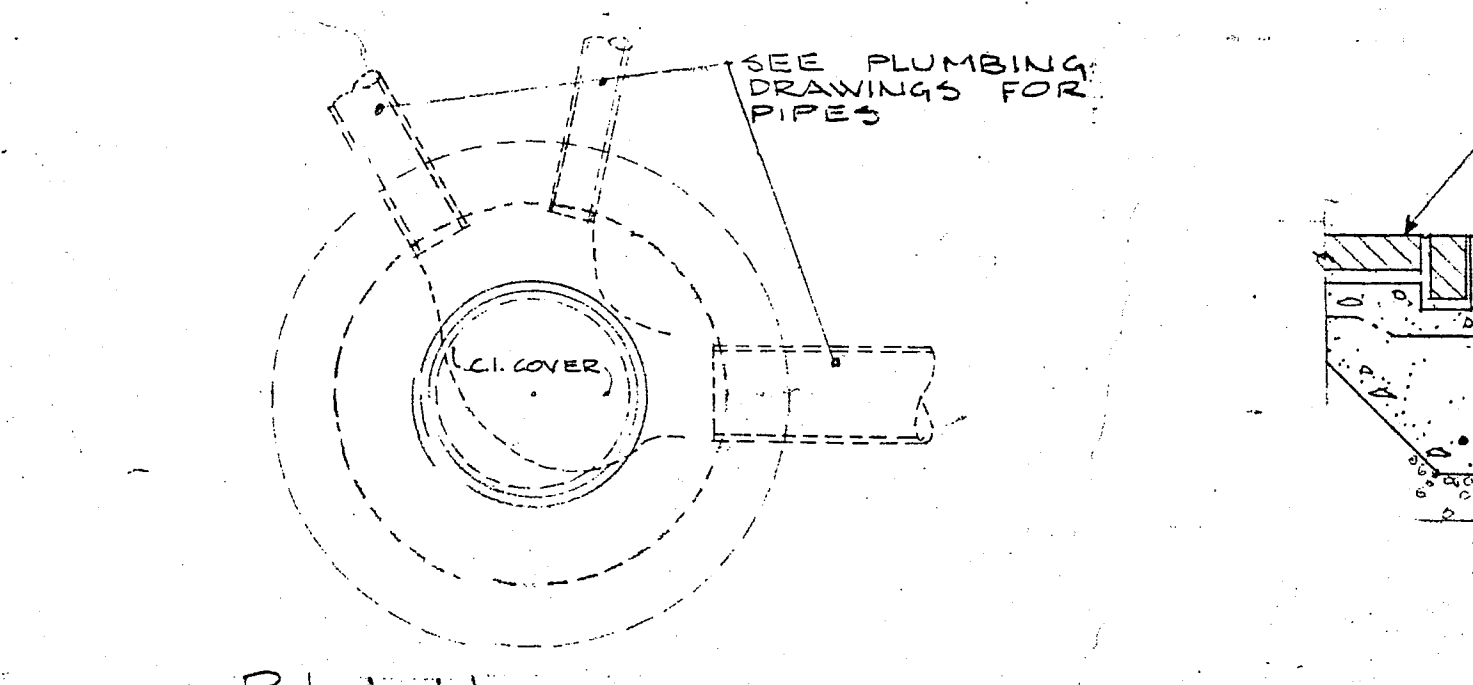
SECTION



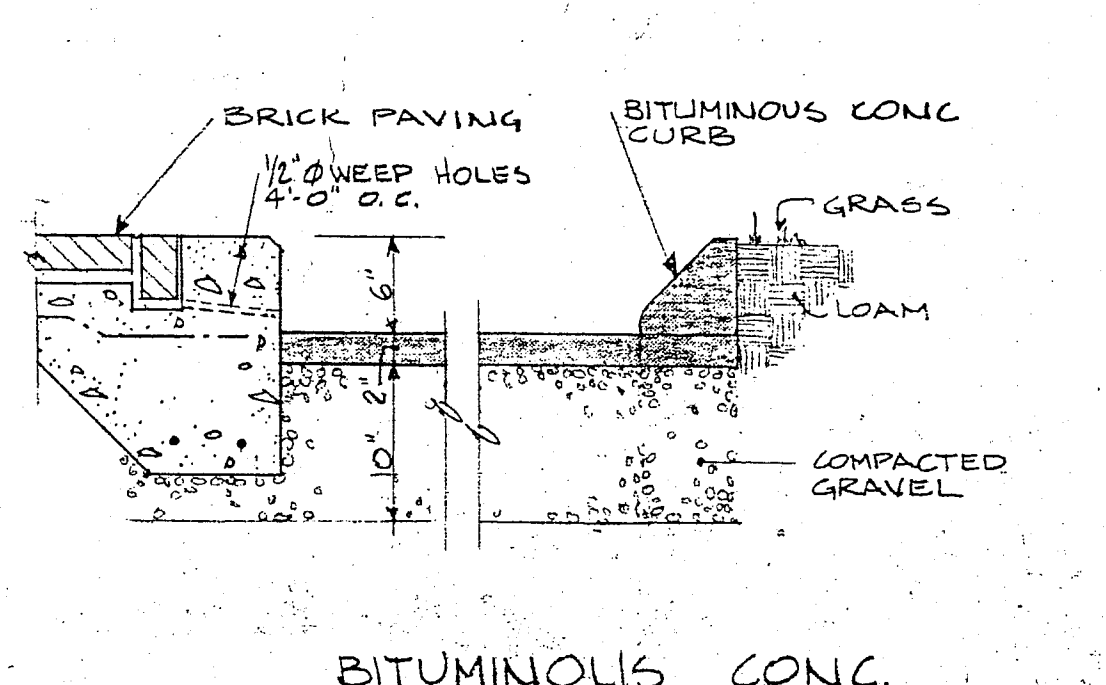
SECTION



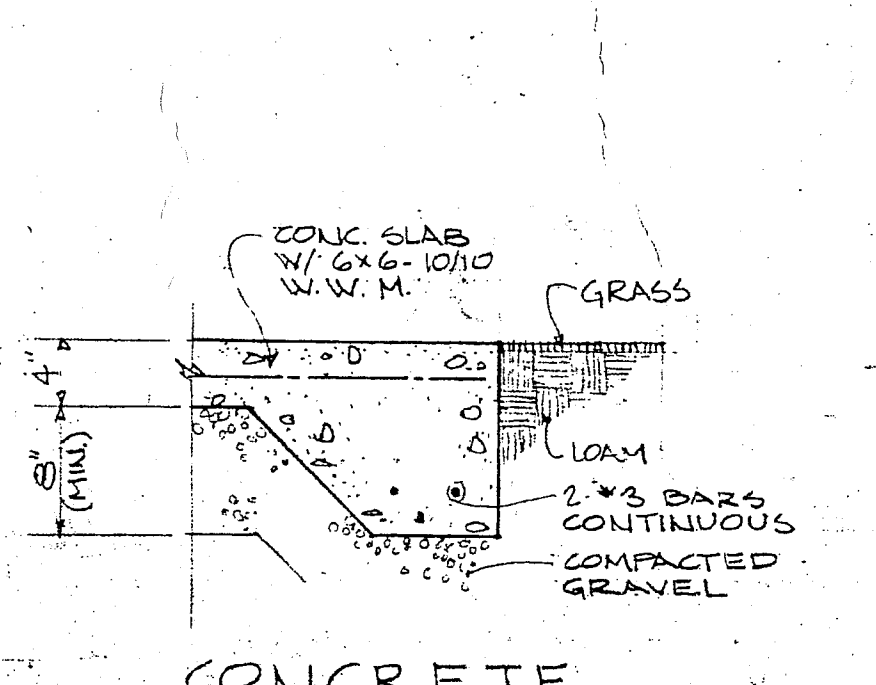
PLAN CATCH BASIN DETAILS
1/2" = 1'-0"



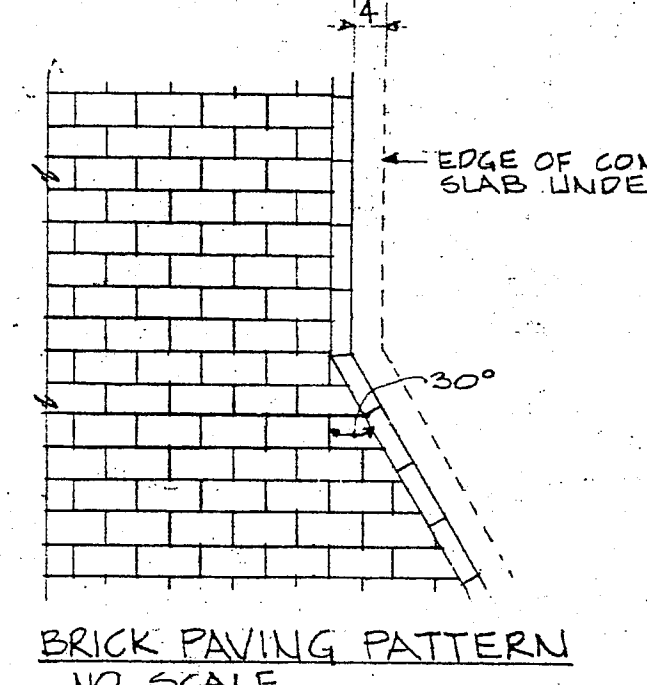
PLAN MANHOLE DETAILS
1/2" = 1'-0"



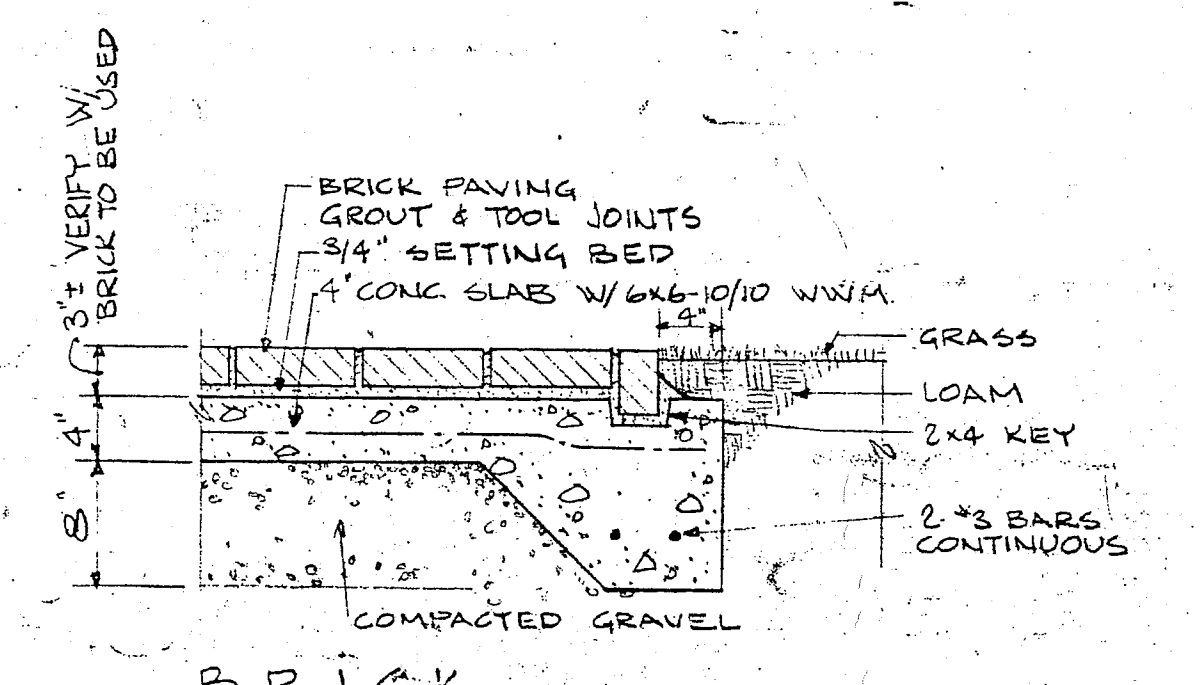
BITUMINOUS CONC. PAVING DETAILS
1" = 1'-0"



CONCRETE (ALTERNATE BID) PAVING DETAILS
1" = 1'-0"



BRICK PAVING PATTERN
NO SCALE



BRICK

Consent of these plans to the State of Maine is hereby given as it is the intent of the State of Maine to acquire the right of way for the construction of the Portland West Elementary School. The State of Maine is not liable for any damages or costs incurred by the contractor or architect in the preparation of these plans.

Reiche

SITE PLAN & DETAILS

	WILBUR R. INGALLS ARCHITECT PORTLAND, MAINE
	PORTLAND WEST ELEMENTARY SCHOOL 3-29-72 11-104