



GEMC-KEYSWKIT

Fire Access Keyswitch Mounting Box Kit INSTALLATION INSTRUCTIONS

333 Bayview Avenue
Amityville, New York 11701
For Sales and Repairs, (800) 645-9445
For Technical Service, (800) 645-9440
(Note: Technical Service is for alarm professionals only)
Publicly traded on NASDAQ Symbol: NSSC

© NAPCO 2011

WI1968 11/11

GENERAL DESCRIPTION

The GEMC-KEYSWKIT is an east-to-install keyswitch mounting box that allows codeless locking and unlocking of the Napco GEM-FK1 Fire alarm keypad. The GEMC-KEYSWKIT can be mounted to a one-, two- or three-gang electrical box, or to a hollow wall using mounting hardware appropriate for the mounting surface. The keyswitch is wired into one of two existing GEMC-FK1 unsupervised keypad inputs; when the key is inserted and rotated, the keyswitch closes, triggering a keypad command to the control panel to unlock that keypad.

Note: In the diagrams that follow, some parts shown may be pre-installed at the factory.

- **Momentary (Zone 1)** - A maintained or momentary input closure unlocks the keypad for 15 minutes; 15 minutes after the last key-press, the keypad re-locks automatically. The wire colors are: Momentary (Zone 1) = **Orange**; Common = **Gray**.
- **Maintained (Zone 2)** - An input closure (keyswitch closed) unlocks the keypad; when the input is opened (switch opened), the keypad locks. The wire colors are: Maintained (Zone 2) = **Blue**; Common = **Gray**.

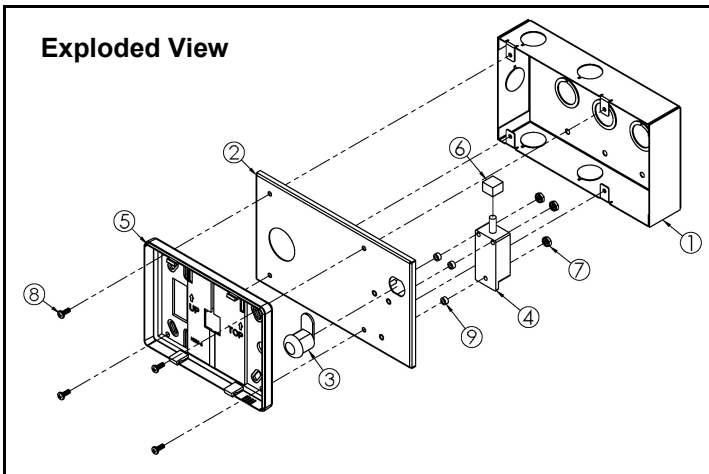
SPECIFICATIONS

Dimensions "Housing Base": H = 4.25", L = 7.25", W = 1.5"

INSTALLATION AND WIRING

Referring to the item descriptions in the illustration, mount the GEMC-KEYSWKIT keyswitch as follows:

1. Determine mounting location of the GEMC-KEYSWKIT "Housing Base".
2. Run 4 wires (6 wires if this is the primary interface) from the control panel to the GEMC-KEYSWKIT keyswitch housing.
3. Determine if the keyswitch will be "momentary" or "maintained".
 - For "Momentary" keyswitch operation: Wire the one **gray** wire and one **orange** wire of the keypad wiring harness to the 2 screws of the switch (no polarity required).
 - For "Maintained" keyswitch operation: Wire the one **gray** wire and one **blue** wire of the keypad wiring harness to the 2 screws of the switch (no polarity required).
4. Using hardware appropriate for the mounting surface, screw the GEMC-KEYSWKIT "Housing Base" securely to the wall.
5. Connect the 4 (or 6) wires of the keypad harness to the wire run.
6. Place the GEMC-FK1 "Keypad Base" over the "Housing Cover", aligning the screw mounting holes. Ensure the keypad wiring harness extends through the large "Housing Cover" hole and through the rectangular "Keypad Base" hole.
7. As shown in the illustration, use four (4) SC203 screws to secure both the "Keypad Base" and the "Housing Cover" to the "Housing Base".
8. Insert harness plug into the keypad socket (observing polarity) and snap the front of the keypad into the "Keypad Base".
9. Power up the system and set the keypad address as detailed in the keypad configuration instructions (see the control panel and keypad installation instructions WI1653 and WI1649). Test keypad by unlocking the keypad using the keyswitch, and ensuring the keypad display reads "Unlocked".



ITEM #	PART #	DESCRIPTION	QTY
1	H490	Housing Base	1
2	9H491ASSY	Housing Cover	1
3	MX1317	Lock	1
4	SW105	Tamper Switch	1
5	--	Keypad Base	1
6	HW1863	Tamper Cap	1
7	N101	Nut, 6-32 Keps	3
8	SC203	Screw, 6-32 x .375 PPH	4
9	SO184	Nylon Spacer	3

Note: Of the four integral hardware inputs in the GEMC-FK1 keypad, two are used within a supervision circuit that turns on the keypad trouble sounder should the system lose contact with the keypad via the 4-wire bus. The other two inputs can be wired to the un-supervised GEMC-KEYSWKIT keyswitch input. If not using the GEMC-KEYSWKIT, all unused keypad harness wires must be insulated to prevent harmful shorting. Closing the keyswitch does not silence, reset or perform any other functions except unlocking the Fire keypad in lieu of an unlock code, allowing the keypad buttons to operate (as if a valid code was entered). The two inputs in the keypad can be programmed and wired to operate as follows:

NAPCO LIMITED WARRANTY

NAPCO SECURITY SYSTEMS, INC. (NAPCO) warrants its products to be free from manufacturing defects in materials and workmanship for *thirty-six months* following the date of manufacture. NAPCO will, within said period, at its option, repair or replace any product failing to operate correctly without charge to the original purchaser or user.

This warranty shall not apply to any equipment, or any part thereof, which has been repaired by others, improperly installed, improperly used, abused, altered, damaged, subjected to acts of God, or on which any serial numbers have been altered, defaced or removed. Seller will not be responsible for any dismantling or reinstallation charges.

THERE ARE NO WARRANTIES, EXPRESS OR IMPLIED, WHICH EXTEND BEYOND THE DESCRIPTION ON THE FACE HEREOF. THERE IS NO EXPRESS OR IMPLIED WARRANTY OF MERCHANTABILITY OR A WARRANTY OF FITNESS FOR A PARTICULAR PURPOSE. ADDITIONALLY, THIS WARRANTY IS IN LIEU OF ALL OTHER OBLIGATIONS OR LIABILITIES ON THE PART OF NAPCO.

Any action for breach of warranty, including but not limited to any implied warranty of merchantability, must be brought within the six months following the end of the warranty period. IN NO CASE SHALL NAPCO BE LIABLE TO ANYONE FOR ANY CONSEQUENTIAL OR INCIDENTAL DAMAGES FOR BREACH OF THIS OR ANY OTHER WARRANTY, EXPRESS OR IMPLIED, EVEN IF THE LOSS OR DAMAGE IS CAUSED BY THE SELLER'S OWN NEGLIGENCE OR FAULT.

In case of defect, contact the security professional who installed and maintains your security system. In order to exercise the warranty, the product must be returned by the security professional, shipping costs prepaid and insured to NAPCO. After repair or replacement, NAPCO assumes the cost of returning products under warranty. NAPCO shall have no obligation under this warranty, or otherwise, if the product has been repaired by others, improperly installed, improperly used, abused, altered, damaged, subjected to accident, nuisance, flood, fire or acts of God, or on which any serial numbers have been altered, defaced or removed. NAPCO will not be responsible for any dismantling, reassembly or reinstallation charges.

This warranty contains the entire warranty. It is the sole warranty and any prior agreements or representations, whether oral or written, are either merged herein or are expressly cancelled. NAPCO neither assumes, nor authorizes any other person purporting to act on its

behalf to modify, to change, or to assume for it, any other warranty or liability concerning its products.

In no event shall NAPCO be liable for an amount in excess of NAPCO's original selling price of the product, for any loss or damage, whether direct, indirect, incidental, consequential, or otherwise arising out of any failure of the product. Seller's warranty, as hereinabove set forth, shall not be enlarged, diminished or affected by and no obligation or liability shall arise or grow out of Seller's rendering of technical advice or service in connection with Buyer's order of the goods furnished hereunder.

NAPCO RECOMMENDS THAT THE ENTIRE SYSTEM BE COMPLETELY TESTED WEEKLY.

Warning: Despite frequent testing, and due to, but not limited to, any or all of the following; criminal tampering, electrical or communications disruption, it is possible for the system to fail to perform as expected. NAPCO does not represent that the product/system may not be compromised or circumvented; or that the product or system will prevent any personal injury or property loss by burglary, robbery, fire or otherwise; nor that the product or system will in all cases provide adequate warning or protection. A properly installed and maintained alarm may only reduce risk of burglary, robbery, fire or otherwise but it is not insurance or a guarantee that these events will not occur. CONSEQUENTLY, SELLER SHALL HAVE NO LIABILITY FOR ANY PERSONAL INJURY, PROPERTY DAMAGE, OR OTHER LOSS BASED ON A CLAIM THE PRODUCT FAILED TO GIVE WARNING. Therefore, the installer should in turn advise the consumer to take any and all precautions for his or her safety including, but not limited to, fleeing the premises and calling police or fire department, in order to mitigate the possibilities of harm and/or damage.

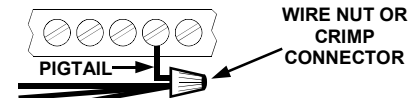
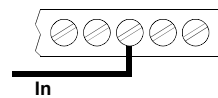
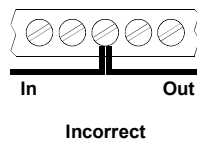
NAPCO is not an insurer of either the property or safety of the user's family or employees, and limits its liability for any loss or damage including incidental or consequential damages to NAPCO's original selling price of the product regardless of the cause of such loss or damage.

Some states do not allow limitations on how long an implied warranty lasts or do not allow the exclusion or limitation of incidental or consequential damages, or differentiate in their treatment of limitations of liability for ordinary or gross negligence, so the above limitations or exclusions may not apply to you. This Warranty gives you specific legal rights and you may also have other rights which vary from state to state.

IMPORTANT WIRING METHODS



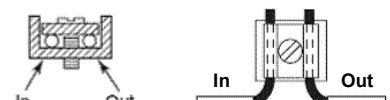
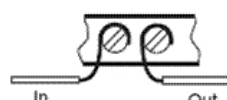
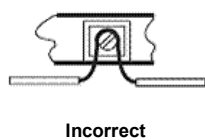
For single-conductor terminal blocks (like the type shown at left), to terminate more than one conductor to a terminal, use the wiring methods shown at right:



Correct -- Single incoming and/or pigtail with wire nut / crimp connectors

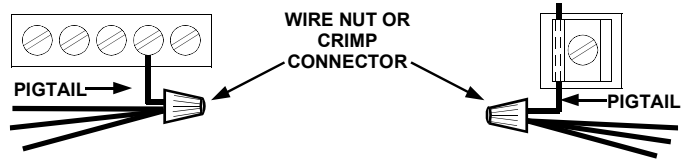
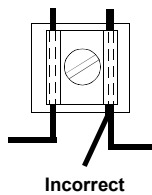


For "barrier" type terminal blocks (like the type shown at left), to terminate two conductors to a terminal, use the wiring methods shown at right:



Correct -- Separate incoming and outgoing conductors

To terminate more than two conductors or conductors of different wire sizes to a terminal, use the "pigtail" type wiring method as shown at right. Use insulated wire for the pigtail, and firmly secure the conductors to the pigtail using an appropriate wire nut or crimp connector for the number and gauge of conductors used.



Correct -- Use pigtail and wire nut / crimp connector