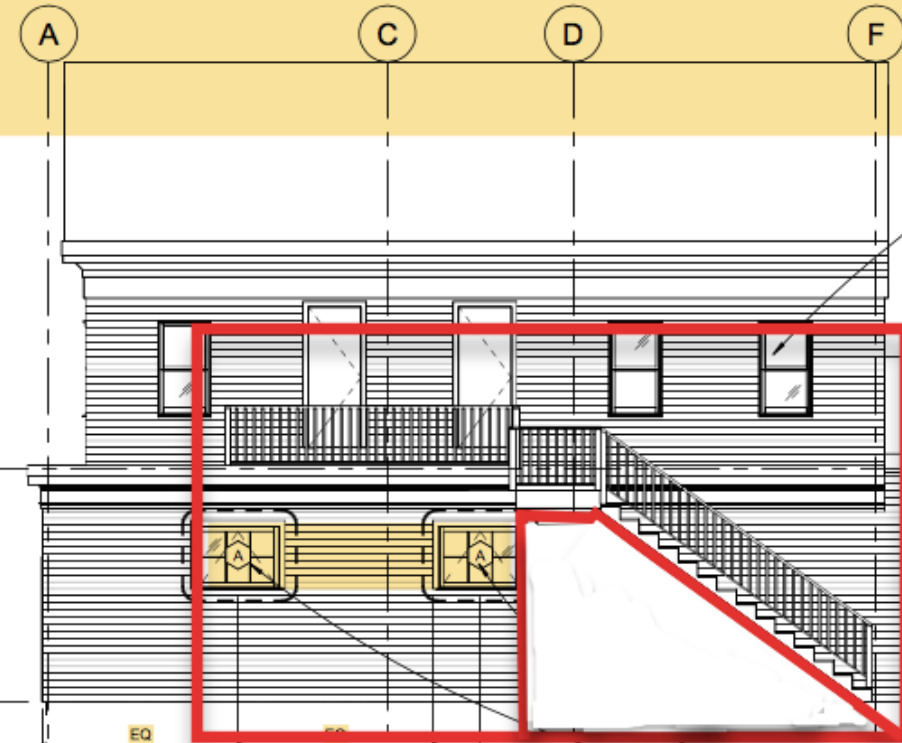


① NORTH ELEVATION  
3/16" = 1'-0"



Replace existing deck with pressure treated components.  
2x6 framing platform placed on 2x4 sleepers.  
2x12 stair stringers. 7 1/2" rise, 36" railing requested  
by Historical.  
Platform dimension: 30'x7'6". Stair width: 4'6"  
Fill in under stairs with a finished panel look,  
requested by Historical.  
\*Supported by crossed braced PT 4x4

Replace existing Stairs and Deck

② SOUTH ELEVATION  
3/16" = 1'-0"

NEW WINDOW, PATCH AND PAINT SIDING  
AND INSTALL TRIM

EXISTING DOOR, TYP