

& door headers  
3-2x10's

2-2x6 top plate

H2.5T hangers  
5" drywall w/FRP panels  
1/2" drywall

R-50  
batt i

2x6 KD studs @ 16" o.c.

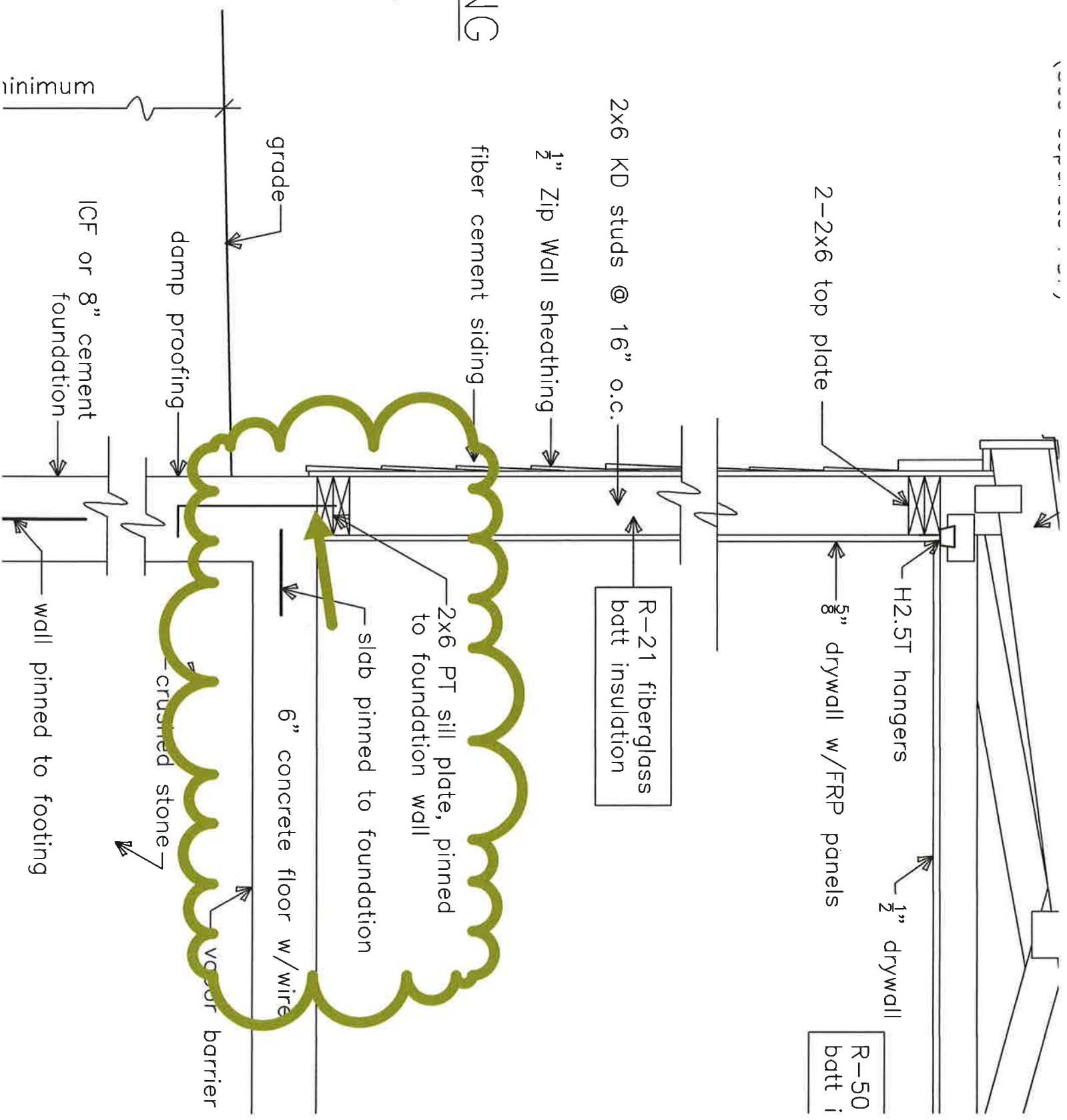
R-21 fiberglass  
batt insulation

1/2" Zip Wall sheathing

# WALL BUILDING

## WALL SECTION

1" = 1'-0"



PROVISIONS