

**HOOD INFORMATION - Job#1775693**

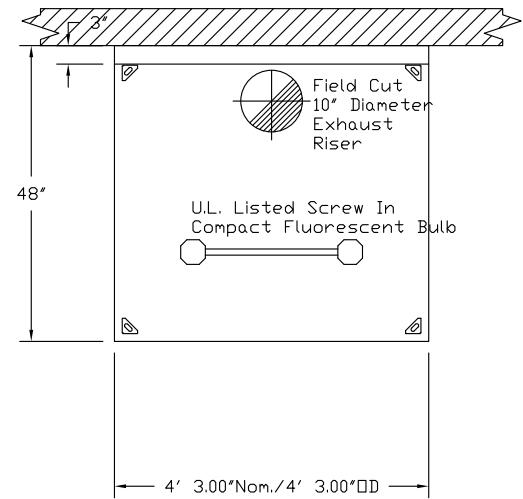
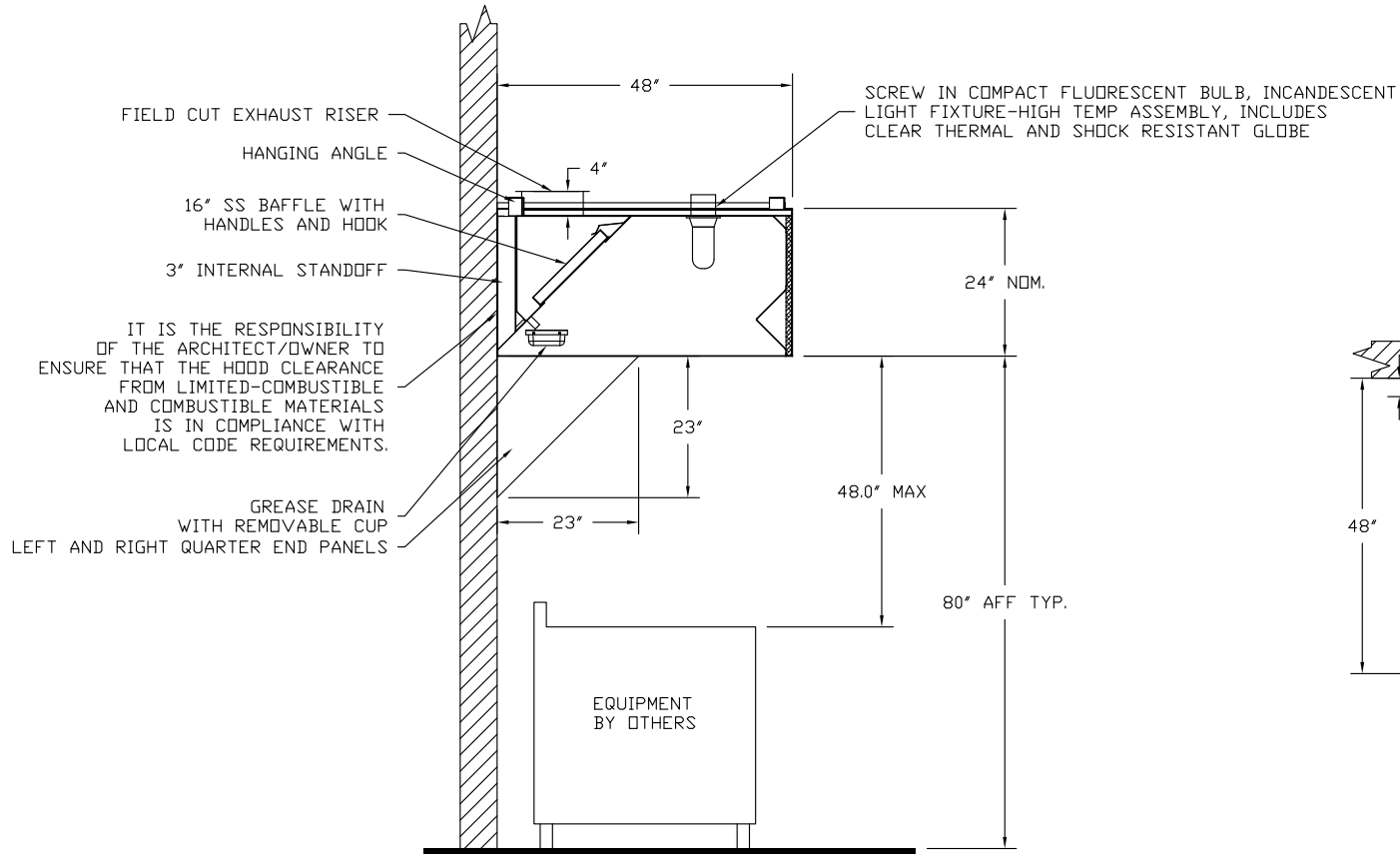
HOOD NO.	MODEL	LENGTH	MAX. COOKING TEMP.	EXHAUST PLENUM RISER(S)					HOOD CONSTRUCTION	HOOD CONFIG.		
				TOTAL EXH. CFM	WIDTH	LENG.	DIA.	CFM		S.P.	END TO END	ROW
1	4824 ND-2	4' 3.00"	600 Deg.	956			10"	956	-0.414'	430 SS Where Exposed	ALONE	ALONE

**HOOD INFORMATION**

HOOD NO.	FILTER(S)				LIGHT(S)			UTILITY CABINET(S)				FIRE SYSTEM PIPING	HOOD HANGING WGT	
	TYPE	QTY.	HEIGHT	LENGTH	QTY.	TYPE	WIRE GUARD	LOCATION	FIRE SYSTEM TYPE	SIZE	ELECTRICAL MODEL #			SWITCHES QUANTITY
1	SS Baffle with Handles	3	16"	16"	2	Screw In Compact Fluore	ND						ND	226 LBS

**HOOD OPTIONS**

HOOD NO.	OPTION									
1	RIGHT QUARTER END PANEL	23'	Top Width,	0'	Bottom Width,	23'	High	430 SS		
	LEFT QUARTER END PANEL	23'	Top Width,	0'	Bottom Width,	23'	High	430 SS		



**SECTION VIEW - MODEL 4824ND-2**

**PLAN VIEW - Hood #1  
4' 3.00" LONG 4824ND-2**

CUSTOMER APPROVAL TO MANUFACTURE:

Approved as Noted

Approved with NO Exception Taken

Revise and Resubmit

SIGNATURE \_\_\_\_\_

Your Title \_\_\_\_\_ Date \_\_\_\_\_



JOB Aurora Provisions	
LOCATION Lewiston, ME	
DATE 5/6/2013	JOB # 1775693
DWG # 1	DRAWN BY BFC-21
REV.	SCALE 3/8" = 1'-0"

**EXHAUST FAN INFORMATION - Job#1775693**

FAN UNIT NO.	FAN UNIT MODEL #	MODEL	TAG	CFM	ESP.	RPM	H.P.	Ø	VOLT	FLA	WEIGHT (LBS.)	SDNES
1	DU33HFA	DU33HFA		956	0.450	1508	0.333	1	115	4.1	99	10.4

**FAN OPTIONS**

FAN UNIT NO.	OPTION (Qty. - Descr.)
1	1 - Grease Box
	1 - Full Crating For Exhaust Fans
	1 - Fan Base Ceramic Seal - For Grease Ducts

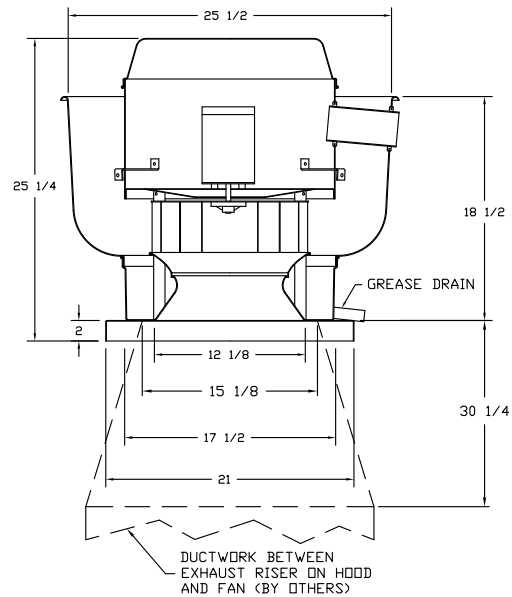
**FAN ACCESSORIES**

FAN UNIT NO.	FAN UNIT TAG	EXHAUST			SUPPLY			
		GREASE CUP	GRAVITY DAMPER	WALL MOUNT	SIDE DISCHARGE	GRAVITY DAMPER	MOTORIZED DAMPER	WALL MOUNT
1		YES						

**CURB ASSEMBLIES**

NO.	ON FAN	WEIGHT	ITEM	SIZE
1	# 1	34 LBS	Curb	19.500"W x 19.500"L x 22.000"H Vented Hinged

FAN #1 DU33HFA - EXHAUST FAN



**FEATURES:**

- ROOF MOUNTED FANS
- RESTAURANT MODEL
- UL705 AND UL762
- VARIABLE SPEED CONTROL
- INTERNAL WIRING
- WEATHERPROOF DISCONNECT
- THERMAL OVERLOAD PROTECTION (SINGLE PHASE)
- HIGH HEAT OPERATION 300°F (149°C)
- GREASE CLASSIFICATION TESTING

**NORMAL TEMPERATURE TEST**

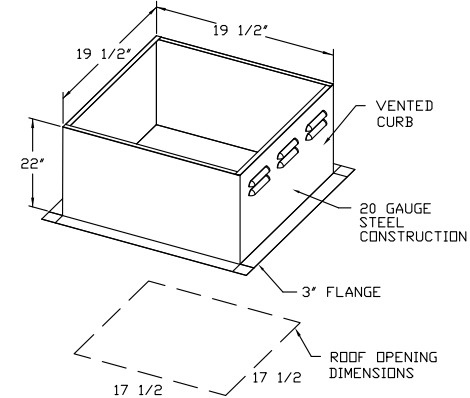
EXHAUST FAN MUST OPERATE CONTINUOUSLY WHILE EXHAUSTING AIR AT 300°F (149°C) UNTIL ALL FAN PARTS HAVE REACHED THERMAL EQUILIBRIUM, AND WITHOUT ANY DETERIORATING EFFECTS TO THE FAN WHICH WOULD CAUSE UNSAFE OPERATION.

**ABNORMAL FLARE-UP TEST**

EXHAUST FAN MUST OPERATE CONTINUOUSLY WHILE EXHAUSTING BURNING GREASE VAPORS AT 600°F (316°C) FOR A PERIOD OF 15 MINUTES WITHOUT THE FAN BECOMING DAMAGED TO ANY EXTENT THAT COULD CAUSE AN UNSAFE CONDITION.

**OPTIONS**

- GREASE BOX
- FULL CRATING FOR EXHAUST FANS
- FAN BASE CERAMIC SEAL - FOR GREASE DUCTS



**CUSTOMER APPROVAL TO MANUFACTURE:**

Approved as Noted

Approved with NO Exception Taken

Revise and Resubmit

SIGNATURE \_\_\_\_\_

Your Title \_\_\_\_\_ Date \_\_\_\_\_

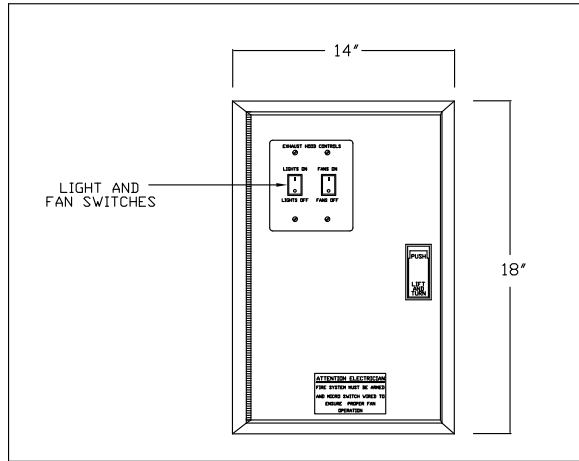


JOB Aurora Provisions	
LOCATION Lewiston, ME	
DATE 5/6/2013	JOB # 1775693
DWG # 2	DRAWN BY BFC-21
REV.	SCALE 3/8" = 1'-0"

**ELECTRICAL PACKAGES - Job#1775693**

NO.	TAG	PACKAGE #	LOCATION	SWITCHES		OPTION	FANS CONTROLLED				
				LOCATION	QUANTITY		TYPE	Ø	H.P.	VOLT	FLA
1		11011002	Wall Mount In SS Box	SS Wall Mount Box	1 Light 1 Fan	Exhaust in Fire	Exhaust	1	0.333	115	4.1

*DETAIL OF REMOTE S/S BOX*



CUSTOMER APPROVAL TO MANUFACTURE:

- Approved as Noted
- Approved with NO Exception Taken
- Revise and Resubmit

SIGNATURE \_\_\_\_\_

Your Title \_\_\_\_\_ Date \_\_\_\_\_



**CAPTIVEAIRE**

JOB Aurora Provisions	
LOCATION Lewiston, ME	
DATE 5/6/2013	JOB # 1775693
DWG # 3	DRAWN BY BFC-21
REV.	SCALE 3/8" = 1'-0"

Exhaust Fan Wiring

JOB NAME Aurora Provisions

DATE 5/6/2013

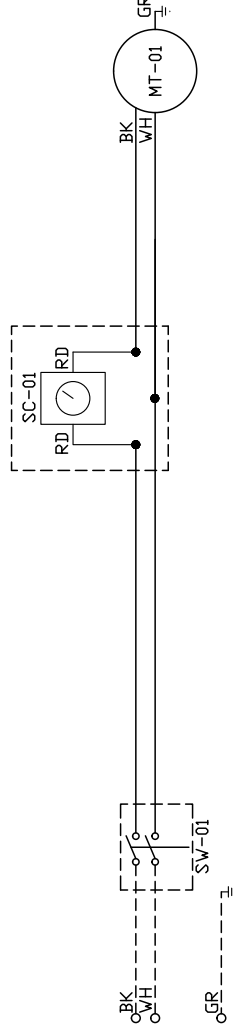
DRAWING NUMBER EXH1775693-1

JOB NUMBER 1775693

MODEL DU83HFA

Installed Options

Speed Control



Label	Description	Location
MT-01	Fan Motor	L2U
QD-01	Quick Disconnect	L2U
SC-01	Speed Control	U1U
SW-01	Main disconnect switch	L2U

EXHAUST MOTOR INFO  
0.333HP-115V-1P-4:FLA

ELECTRICAL INFORMATION  
MOTOR CONTROL MOP: 52A  
MOTOR CONTROL MOP: 15A

NOTES  
----- DENOTES FIELD WIRING  
\_\_\_\_\_ DENOTES INTERNAL WIRING

WIRE COLOR

BK - BLACK	YW - YELLOW
BL - BLUE	GR - GREEN
BR - BROWN	GY - GRAY
OR - ORANGE	PR - PURPLE
RD - RED	PK - PINK
WH - WHITE	

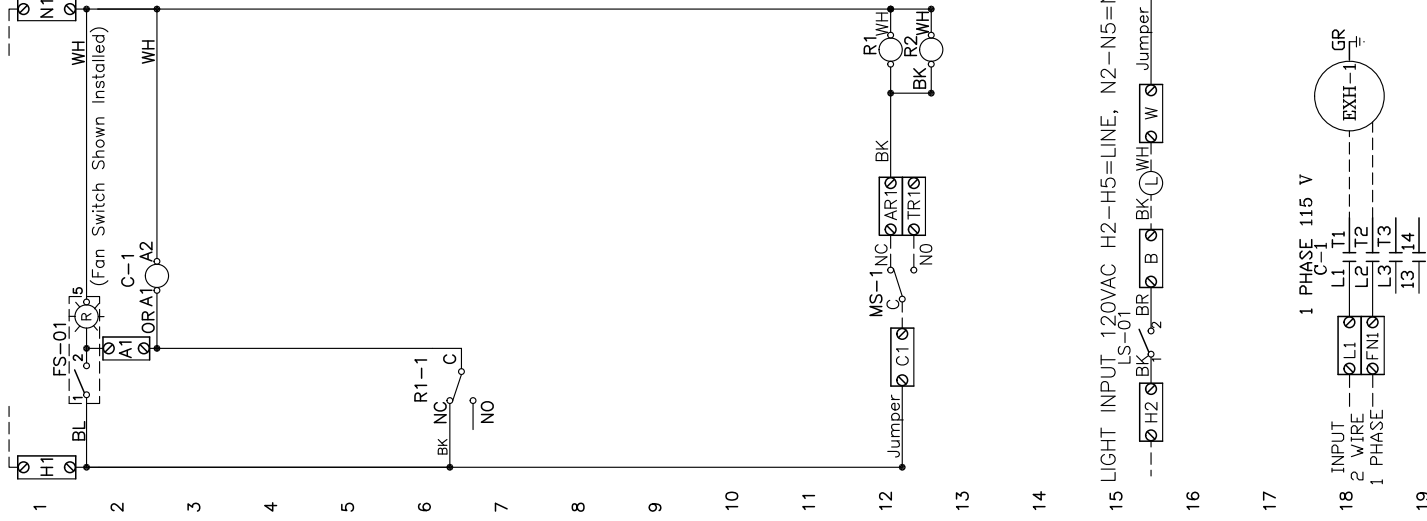
1  
2  
3  
4  
5  
6  
7  
8  
9  
10  
11  
12  
13  
14  
15  
16  
17  
18  
19  
20  
21  
22  
23

DRAWING NUMBER 11011002

JOB NUMBER 1775693

DRAWN BY

CONTROL INPUT 120VAC H1=LINE, N1=NEUTRAL 15A BKR - DO NOT WIRE TO SHUNT TRIP BREAKER



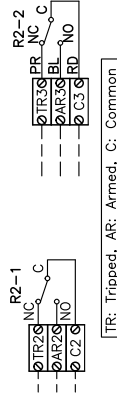
1 Phase Controls for 1 Exhaust fan. Includes 1 Light switch, 1 Fan switch, Exhaust in Fire.

## COMPONENT PARTS LIST

LABEL	DESCRIPTION
C-x	Contact
ST-x	Starter
OL-x	Overload
FS-xx	Fan Switch (Lighted)
LS-xx	Light Switch
L	Hood Light(s)
MS-x	MicroSwitch (Ansu/PyroChem)
Rx	Relay DPDT - 34.110.0184.0 + Socket

## SPARE FIRE DRY CONTACTS

SPARE RELAY CONTACTS USED WHEN FIRE SYSTEM DISCHARGES TO SHUT DOWN EQUIPMENT OR PROVIDE SIGNALS. (NOT FOR BUILDING FIRE ALARM)



## Rx-RELAY SOCKET STYLE "CLON"

C-RD	NO	4	3
NO-BL	NC	2	1
NC-PR	COL	8	7
	COM	6	5

MS-x  
MicroSwitch  
C-RD  
NO-BK  
NC-BR

MOTOR	TAG	PH	VLT	HP	FLA	BRK
EXH-1		1	115	0.33	4.1	15A

## NOTES

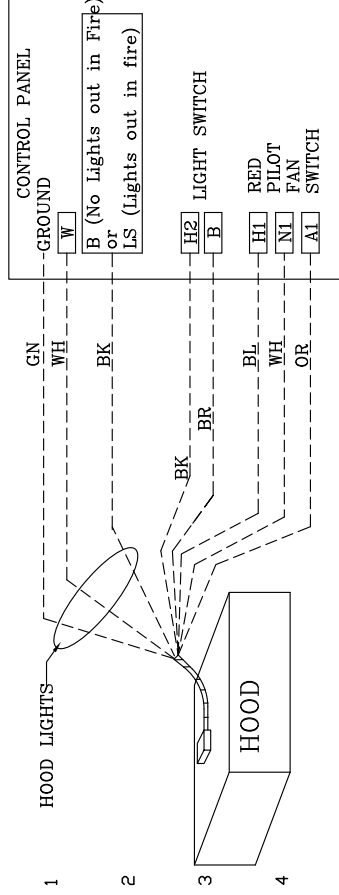
----- DENOTES FIELD WIRING  
 \_\_\_\_\_ DENOTES INTERNAL WIRING

## WIRE COLOR

BK - BLACK YW - YELLOW  
 BL - BLUE GR - GRAY  
 BR - BROWN PR - PURPLE  
 OR - ORANGE OR/BL -ORANGE/BLUE (STRIPE)  
 RD - RED BL/RD - BLUE/RED (STRIPE)  
 WH - WHITE RD/GN - RED/GREEN (STRIPE)

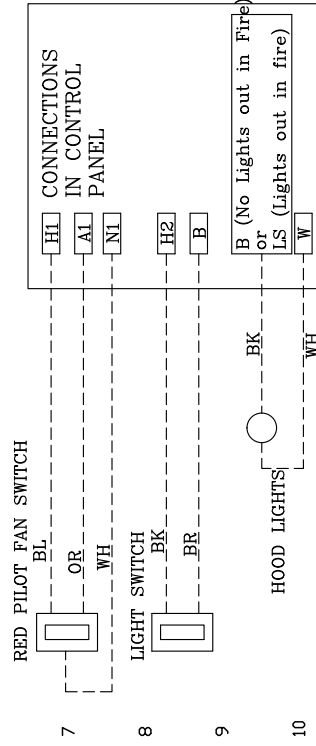
DRAWING SHOWN DE-ENERGIZED  
 NOTE: IF WALL MOUNT PREWIRE, OR FIELD INSTALLED FIRE SYSTEM MICROSWITCH, THE TERMINALS SHOWING FACTORY WIRING MUST BE FIELD WIRED.

HOOD TO CONTROL PANEL

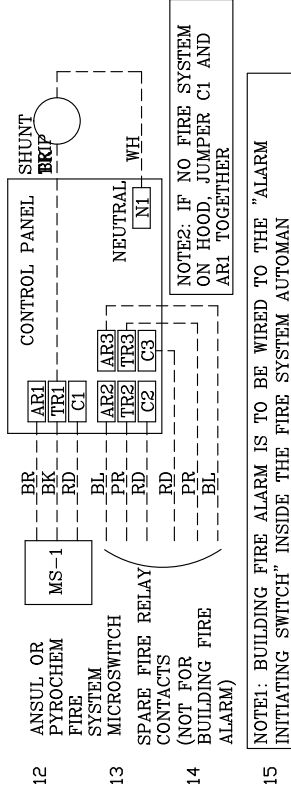


5 Light switch and fan switch mounted on the face of the hood and control panel mounted separately then field wire to the control panel as shown.

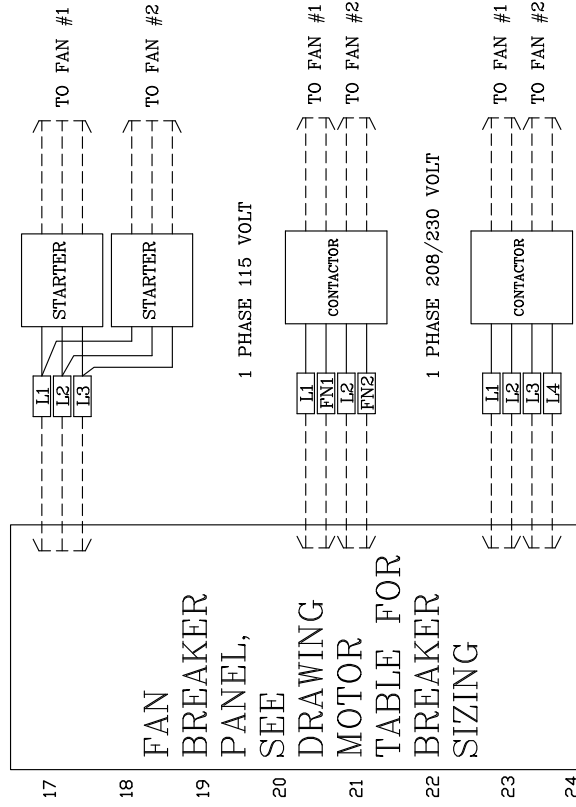
6 FIELD WIRED SWITCHES TO CONTROL PANEL



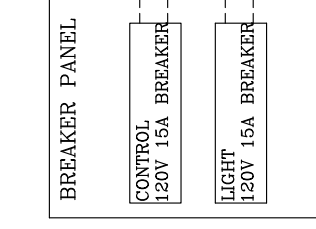
11 FIRE SYSTEM MICROSWITCH 120VAC SHUNT TRIP WIRING TO CONTROL PANEL BREAKER WIRING



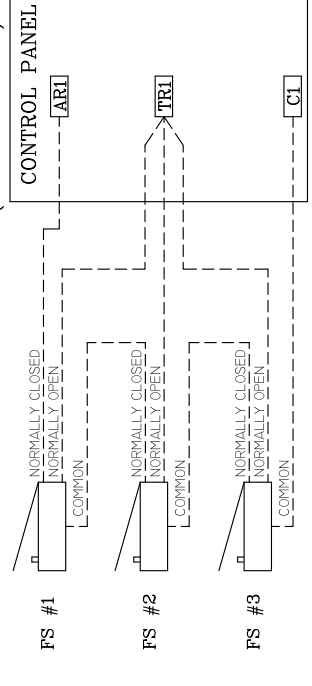
16 FAN WIRING TO CONTROL PANEL



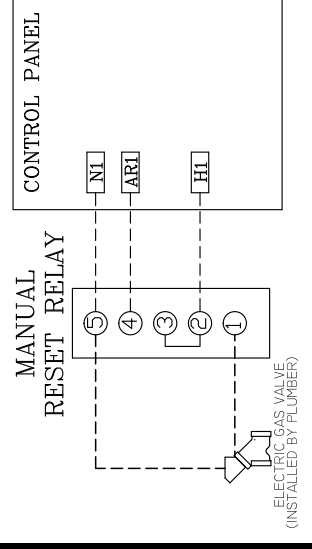
POWER FEED FOR CONTROLS AND LIGHTING



MICRO-SWITCHES WIRING WHEN MULTIPLE FIRE SYSTEMS CONNECTED TO ONE ELECTRICAL PANEL (3 SHOWN HERE)



ELECTRIC GAS VALVE WITH RESET RELAY



NOTES

- DENOTES FIELD WIRING
- - - - - DENOTES INTERNAL WIRING
- WIRE COLOR
  - BK - BLACK
  - BL - BLUE
  - BR - BROWN
  - OR - ORANGE
  - RD - RED
  - WH - WHITE
  - GN - GREEN
  - YW - YELLOW
  - GY - GRAY
  - PR - PURPLE
  - DR/BL - DRANGE/BLUE (STRIPE)
  - BL/RD - BLUE/RED (STRIPE)
  - RD/GN - RED/GREEN (STRIPE)

FAN BREAKER PANEL, SEE DRAWING MOTOR TABLE FOR BREAKER SIZING