

FIRST FLOOR PLAN
1/4"=1'-0"



- NOTES:**
1. CONTRACTOR TO FIELD VERIFY ALL DIMENSIONS.
 2. VERIFY ALL ELEVATIONS OF EXISTING FLOOR LEVELS AND LANDING AREAS PRIOR TO ORDERING OR INSTALLATION.
 3. SEE STRUCTURAL DRAWINGS FOR FRAMING & BRACING DETAILS.
 4. PROVIDE HANDRAILS ON EACH SIDE OF STAIRS (SEE DETAIL 2/AS).
 5. CONTRACTOR TO VERIFY EXISTING FRAMING CONDITIONS AND REPORT DISCREPANCIES TO ARCHITECT/ENGINEER PRIOR TO CONTINUING WORK.

LEGEND

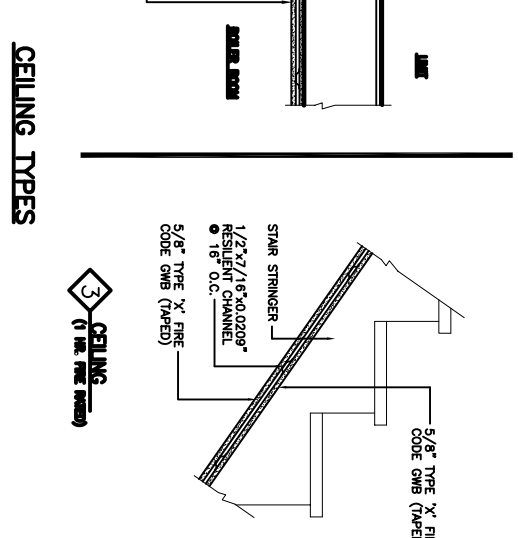
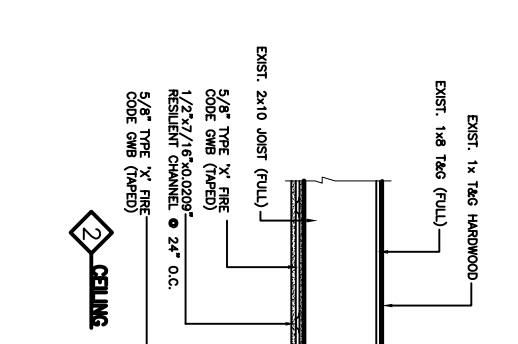
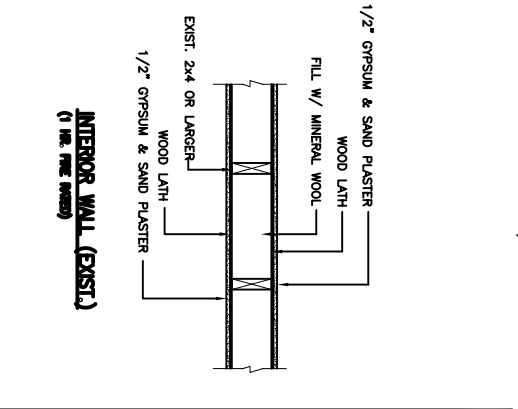
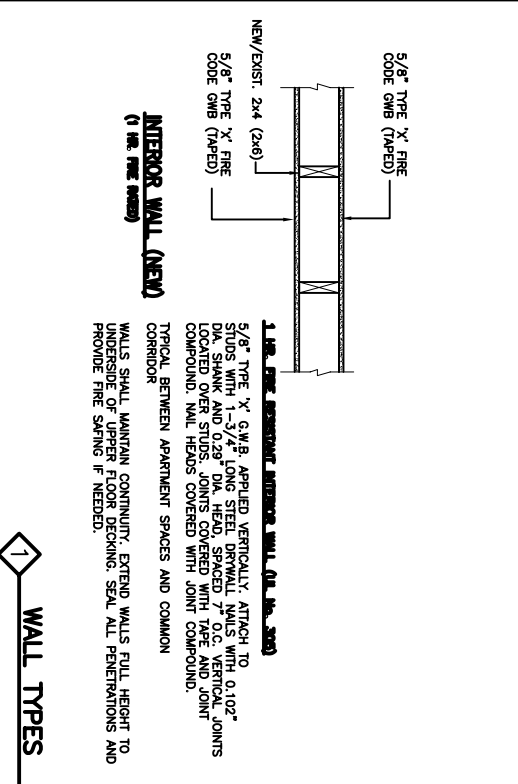
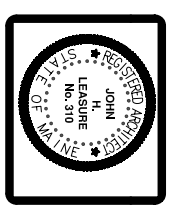
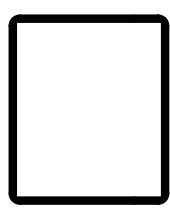
- ◆ 1 HR. FIRE RATED WALL
- ▨ 1 HR. FIRE RATED CEILING
- Ⓜ 1 HR. RATED DOOR W/ 1HR. RATED METAL JAMB (SEE NOTES ON DWG. A0)
- Ⓢ EMERGENCY LIGHT W/ BATTERY BACKUP (SEE NOTES ON DWG. A0)
- Ⓣ SMOKE DETECTOR (HARD WIRED) SEE NOTES ON DWG. A0
- ⓕ PORTABLE FIRE EXTINGUISHER (SEE NOTES ON DWG. A0)

FIRST FLOOR PLAN

**ALTERATIONS TO:
RESIDENTIAL UNIT
CONDOMINIUM CONVERSION**
9 LARDE STREET
PORTLAND, MAINE 04104

JOHN H. LEASURE ARCHITECT, INC.
6 Q STREET
SOUTH PORTLAND, MAINE 04106

REV.	DATE	STATUS
0	12/4/06	FOR PERMIT



WALL TYPES

1 (1 HR. FIRE RATED)

2 (1 HR. FIRE RATED)

3 (1 HR. FIRE RATED)

A2