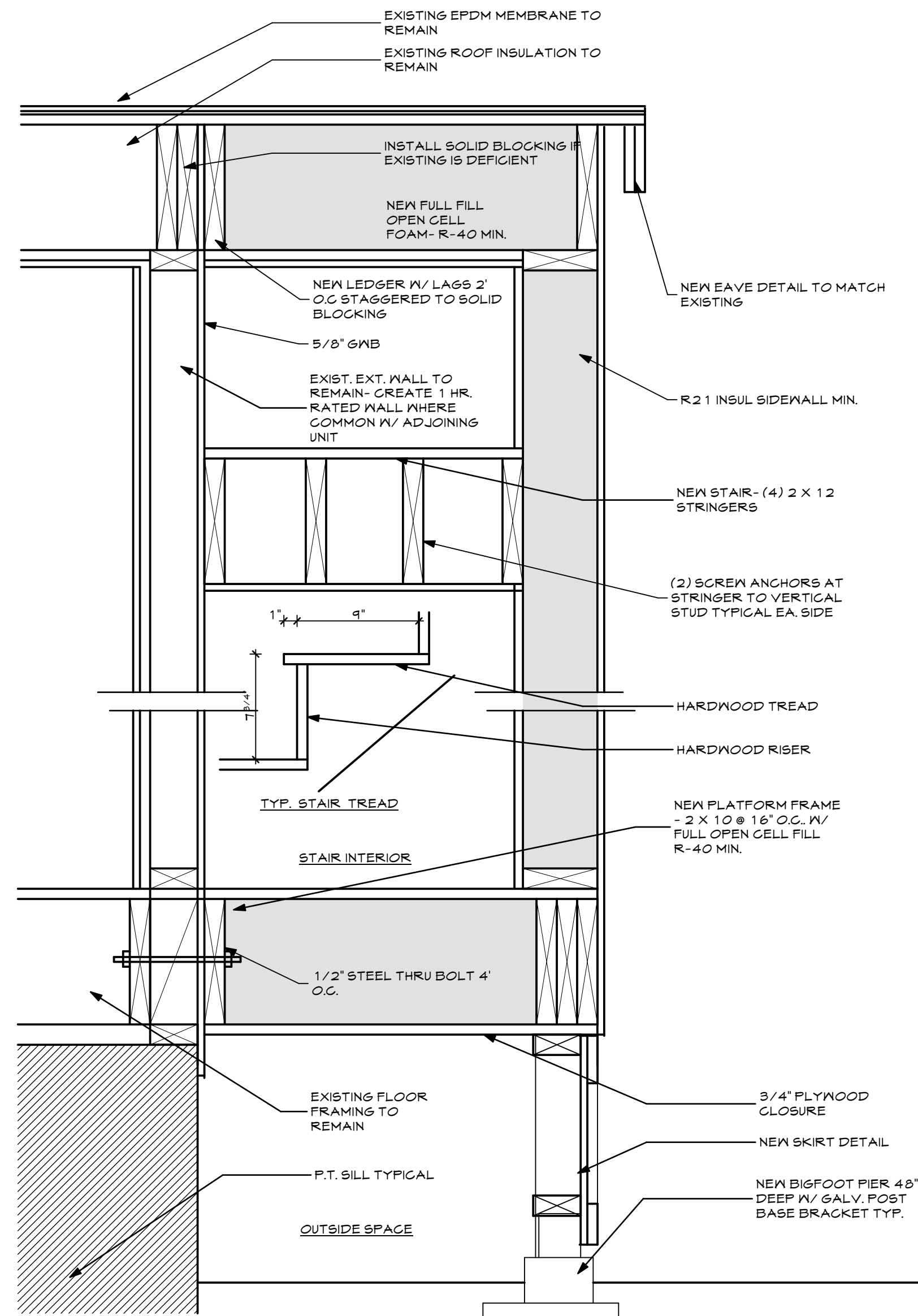




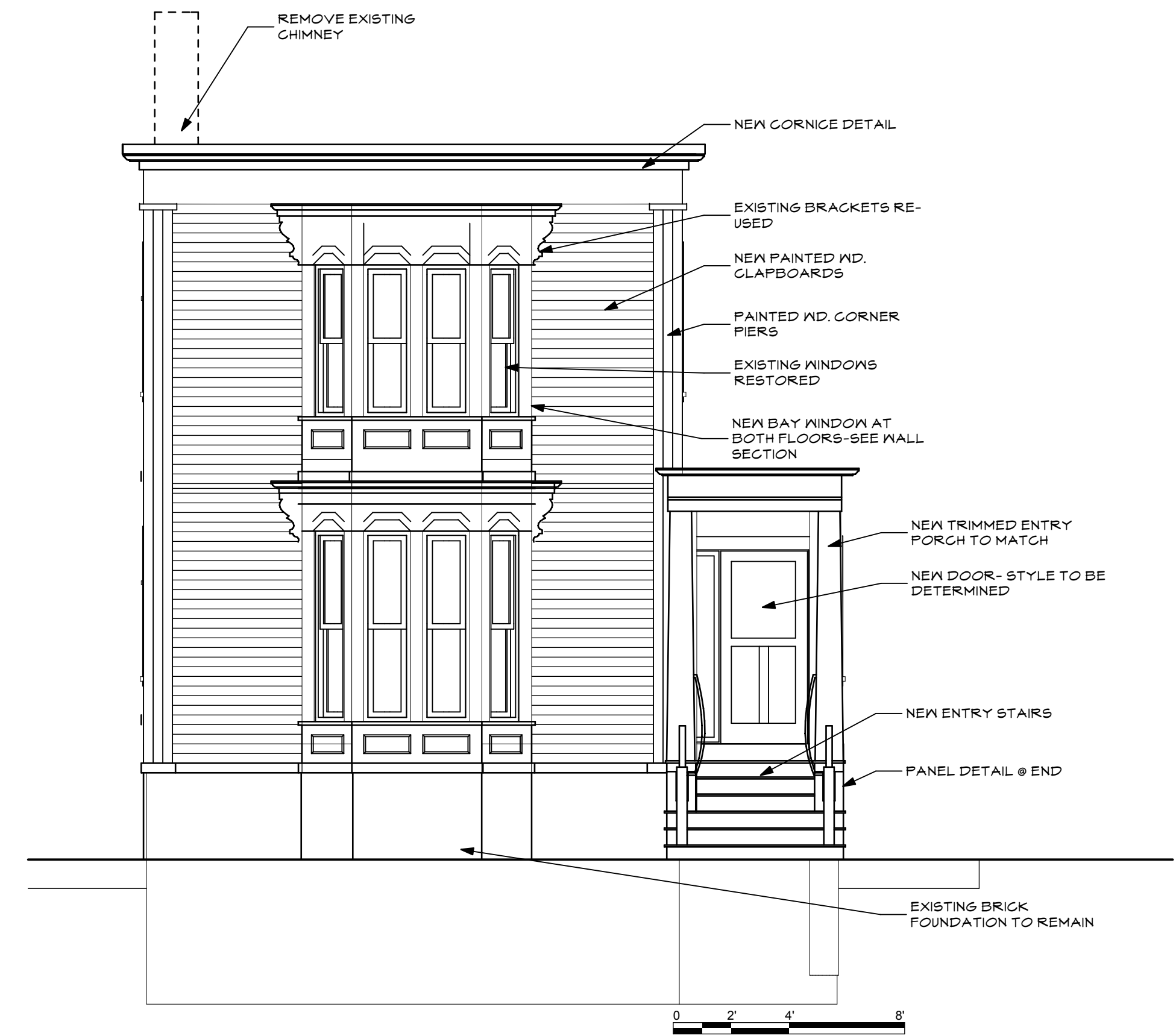
EXISTING DRIVEWAY ELEVATION



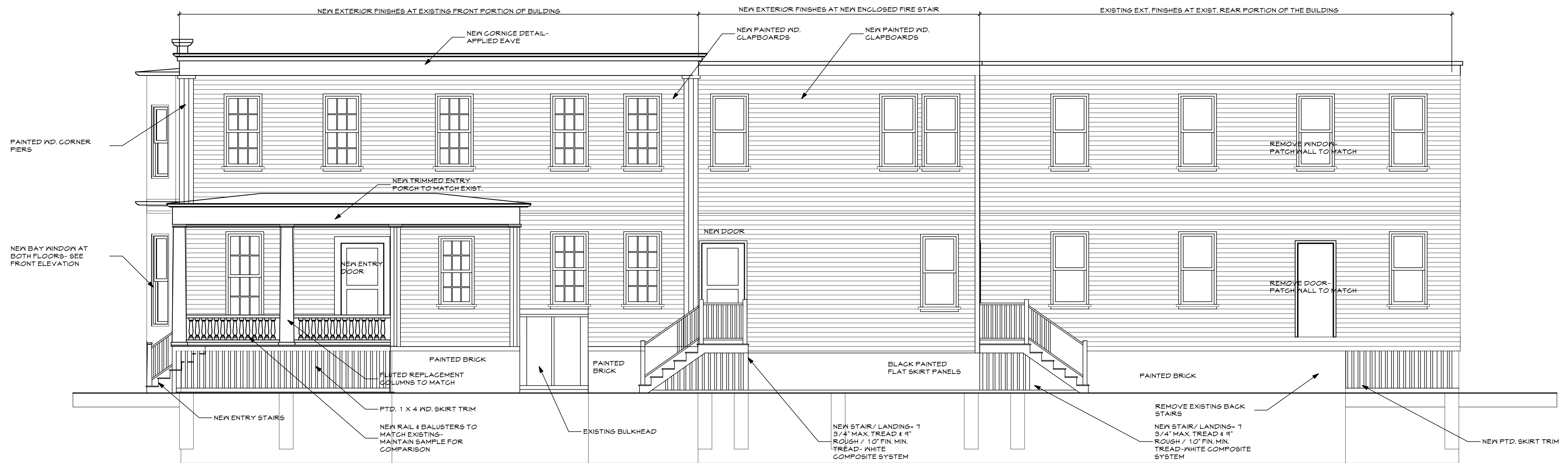
EXISTING SIDE ELEVATION



EGRESS STAIR SECTION



1 Street Elevation  
SCALE: 1/4" = 1'-0"



1 Right Side Elevation  
SCALE: 1/4" = 1'-0"

13 LEWIS STREET PORTLAND, MAINE

WHIPPLE - CALLENDER ARCHITECTS

136 PLEASANT AVE. PORTLAND, ME 04103  
P 207.115.2646  
F 207.115.5631  
www.whipplecallender.com

DATE	DESCRIPTION
11.5.13	

CHECKED BY: JAD  
DRAWN BY: Initials  
JOB: ##-XXX  
SHEET TITLE: EXT. ELEVATIONS

A2.1