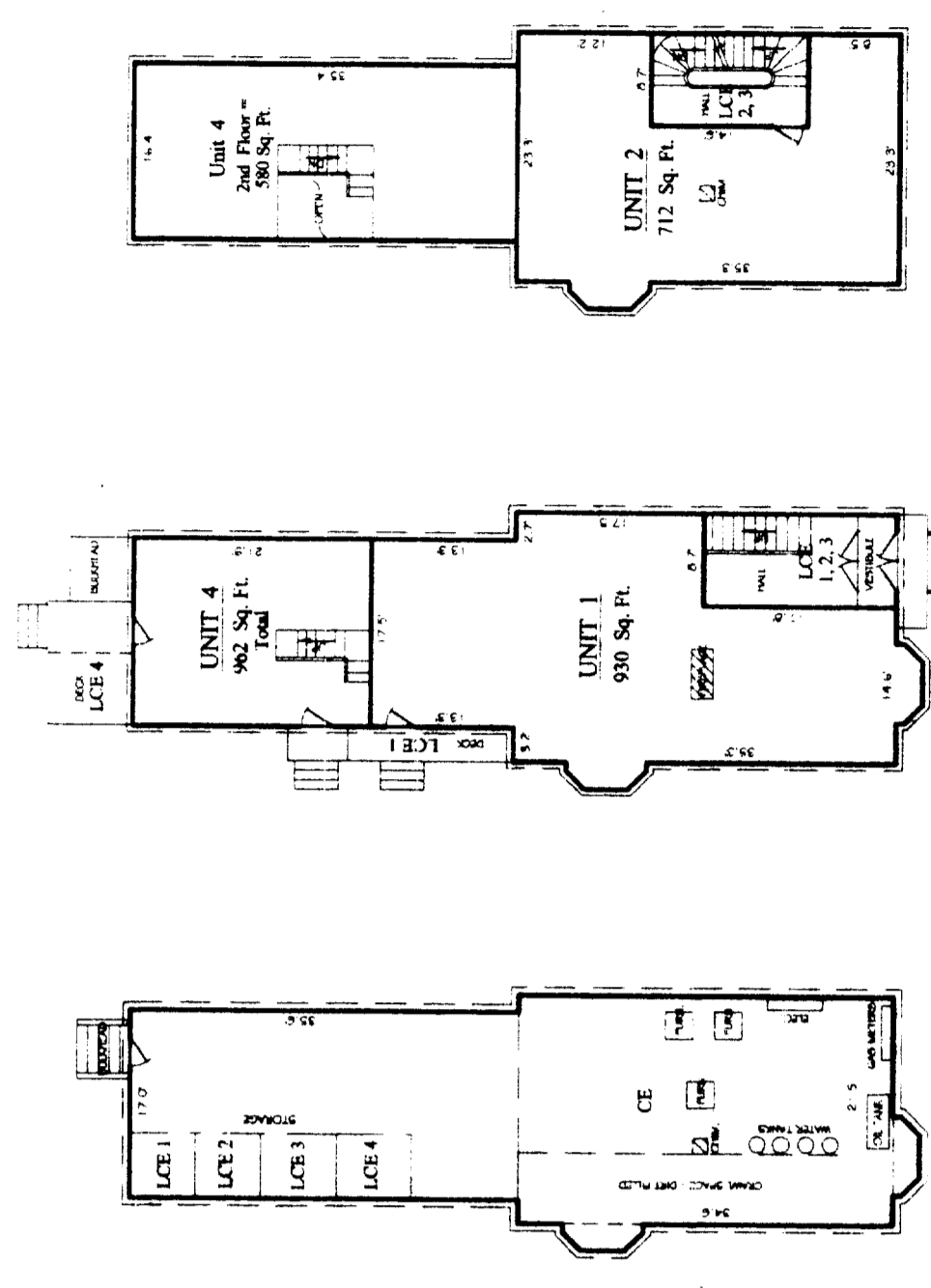


HORIZONTAL BOUNDARY

NOTE: MEASUREMENTS BASED ON CITY DATUM

Ceiling B1 = 171.5
 2nd Floor B1 = 161.8
 2nd Floor B1 = 156.8
 1st Floor B1 = 149.7
 Measurement B1 = 132.2



THIRD FLOOR

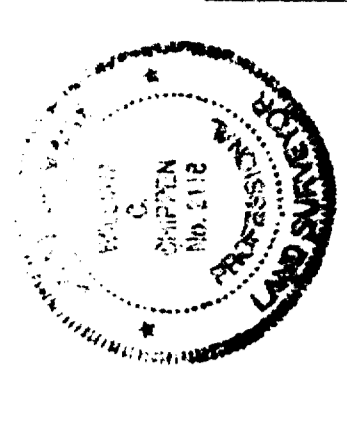
SECOND FLOOR

FIRST FLOOR

BASEMENT

— PINE STREET —

VERTICAL BOUNDARY



OWEN HASKELL, INC.
 WILLIAM S. HASKELL, P.E.
 18 CANTON ST., PORTLAND, ME 04101 (877) 674-6448
 P.O. BOX 4722, PORTLAND, MAINE
 VAIL HOLDINGS, LLC

DATE: 3-1-05

LEGEND:
 CE: COMMON ELEMENT
 LCE: LIMITED COMMON ELEMENT
 ---: UNIT BOUNDARY

HORIZONTAL & VERTICAL BOUNDARIES
 77 PINE STREET CONDOMINIUM
 77 PINE STREET, PORTLAND, MAINE
 PROJECT NO. 05-00001
 3/1/05