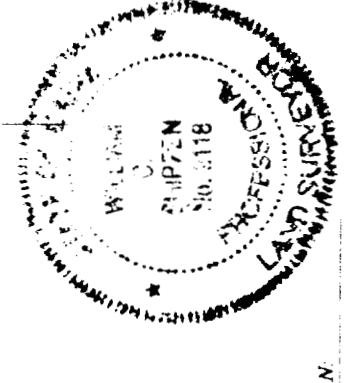
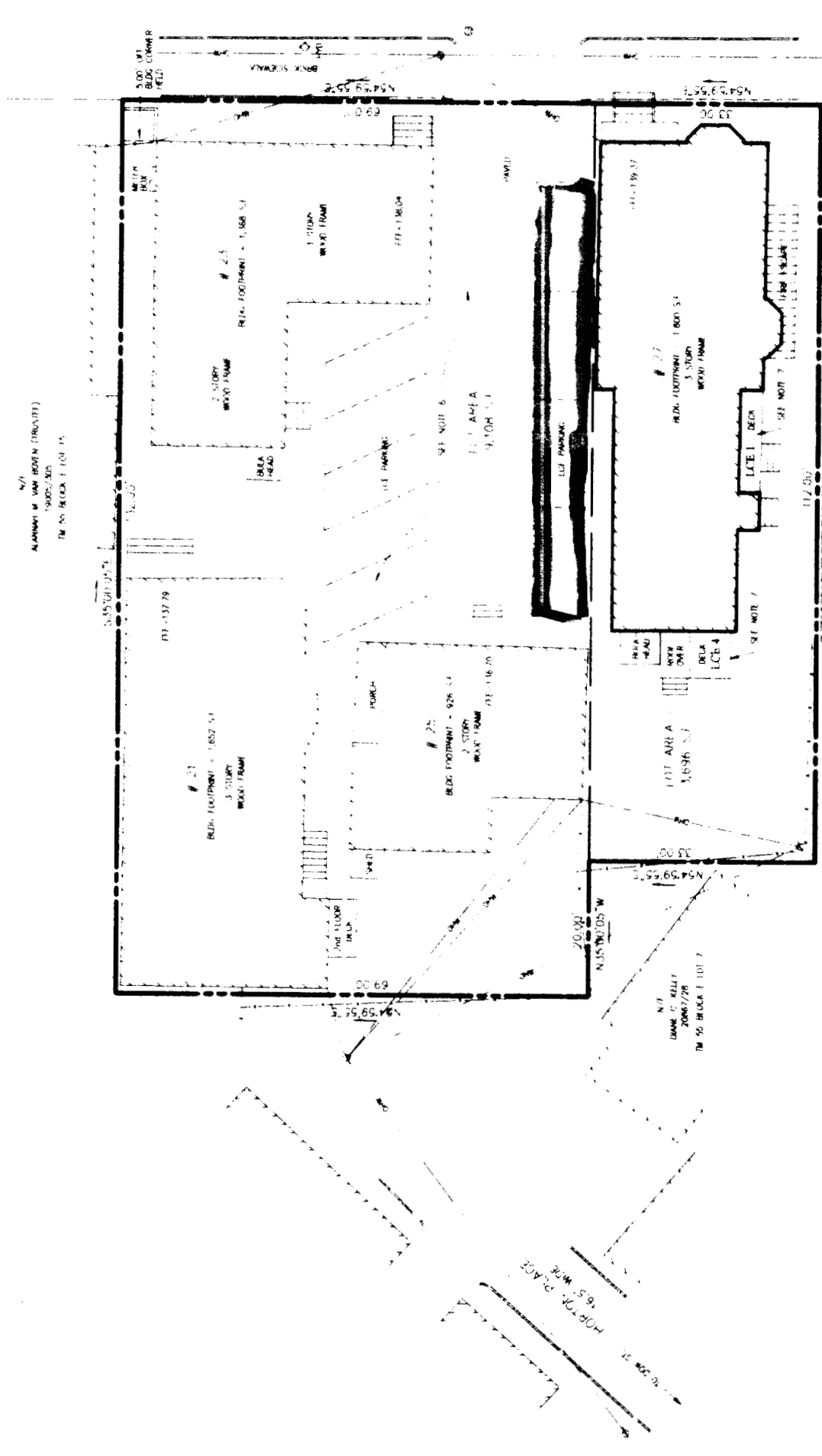
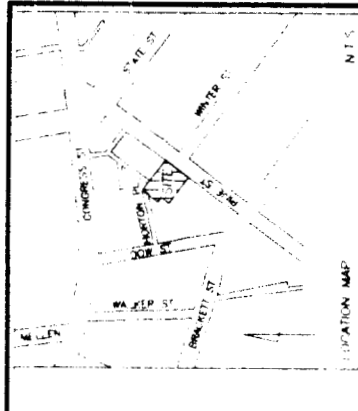


DEPT. OF BUILDING INSPECTION
CITY OF PORTLAND, ME
APR 25 2005
RECEIVED



OWEN HASKELL, INC.
P.O. BOX 4102, PORTLAND, MAINE
ME 04101
TEL: 603.771.1117
FAX: 603.771.1118

CERTIFICATION
OWEN HASKELL, INC. HEREBY CERTIFIES THAT THIS PLAN IS BASED ON THE RECORD DRAWINGS AND ALL INFORMATION AND RECORDS IN THE OFFICE OF THE ARCHITECT AND ENGINEER, PROFESSIONAL LAND SURVEYORS, AND PROFESSIONAL LAND ENGINEERS.

NOTES:
1. OWNER TO REVIEW THIS PLAN AND ALL INFORMATION AND RECORDS IN THE OFFICE OF THE ARCHITECT AND ENGINEER, PROFESSIONAL LAND SURVEYORS, AND PROFESSIONAL LAND ENGINEERS.
2. CONTRACTOR TO VERIFY ALL DIMENSIONS AND CONDITIONS AS SHOWN ON PLAN.
3. CONTRACTOR TO VERIFY ALL DIMENSIONS AND CONDITIONS AS SHOWN ON PLAN.
4. CONTRACTOR TO VERIFY ALL DIMENSIONS AND CONDITIONS AS SHOWN ON PLAN.
5. CONTRACTOR TO VERIFY ALL DIMENSIONS AND CONDITIONS AS SHOWN ON PLAN.
6. CONTRACTOR TO VERIFY ALL DIMENSIONS AND CONDITIONS AS SHOWN ON PLAN.
7. CONTRACTOR TO VERIFY ALL DIMENSIONS AND CONDITIONS AS SHOWN ON PLAN.

PLAN REFERENCES:
1. ARCHITECT'S GENERAL NOTES AND SPECIFICATIONS FOR PORTLAND, ME.
2. ARCHITECT'S GENERAL NOTES AND SPECIFICATIONS FOR PORTLAND, ME.
3. ARCHITECT'S GENERAL NOTES AND SPECIFICATIONS FOR PORTLAND, ME.
4. ARCHITECT'S GENERAL NOTES AND SPECIFICATIONS FOR PORTLAND, ME.

LEGEND:
1. APARTMENT FLOOR
2. FENCE
3. CURB
4. DRIVEWAY
5. UTILITY

3-4-05

WILLIAM C. GAGNIER, P.L.L.C.

WILLIAM C. GAGNIER, P.L.L.C.

