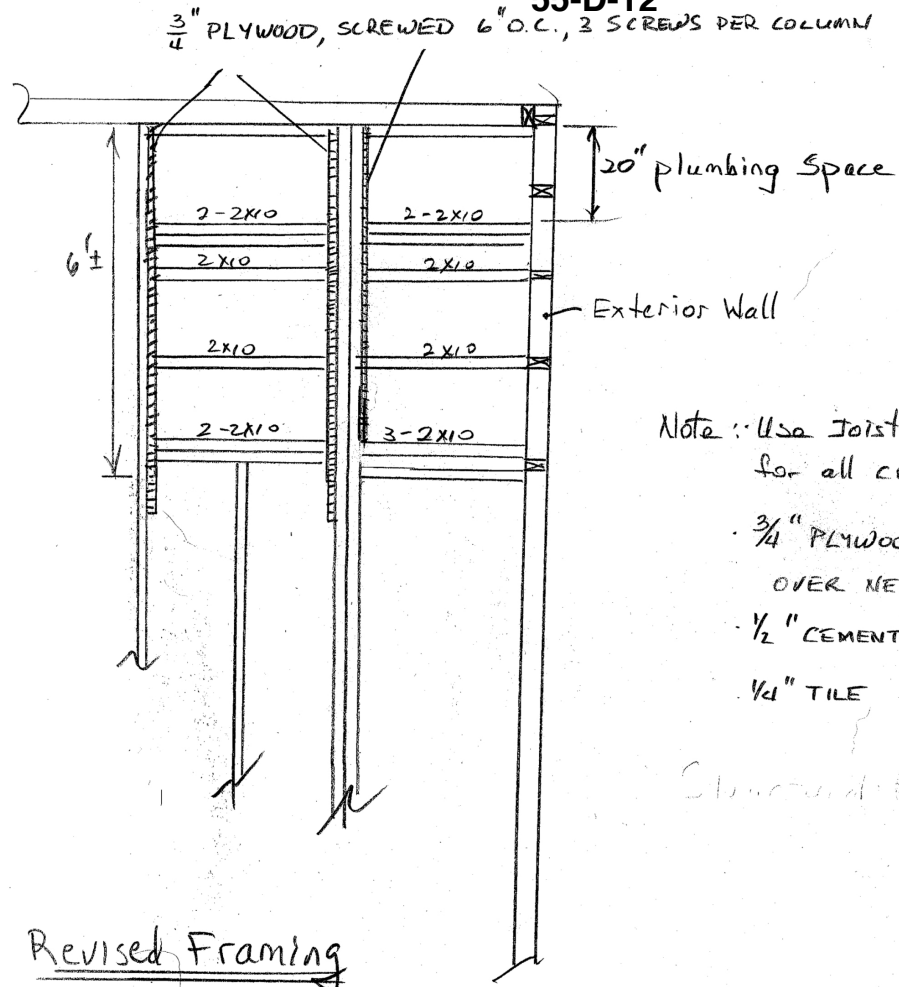
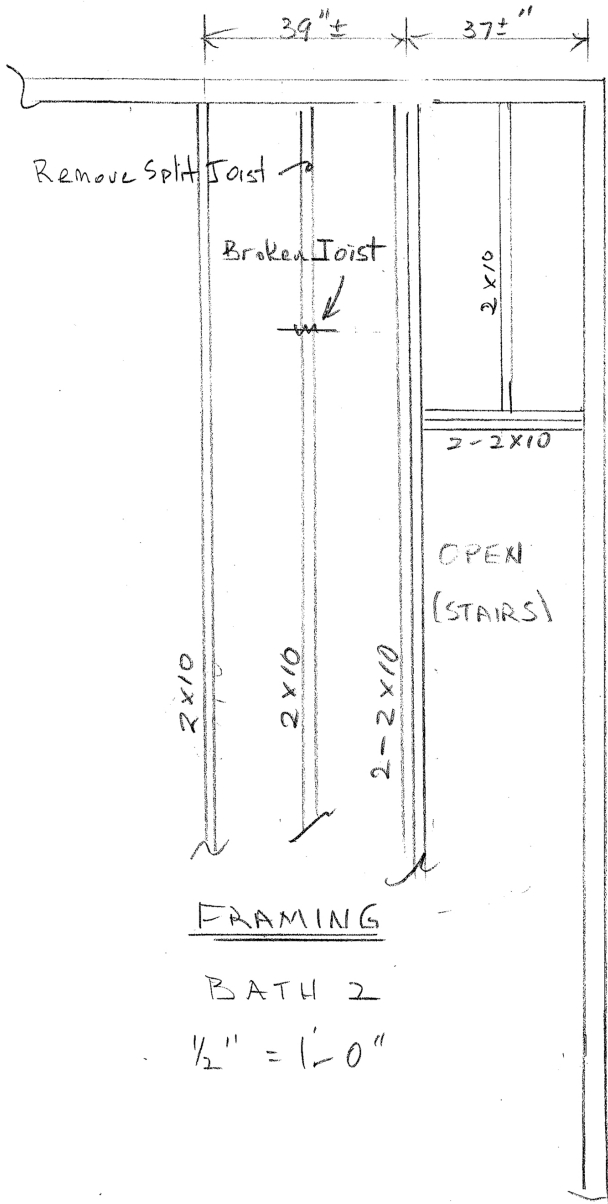


**S1 Framing Sections & Details
 Bathroom Floor Framing
 15 Dow Street, Portland, ME 04102
 55-D-12**



- Note: Use Joist hangers for all connections
- 3/4" PLYWOOD FLOORING OVER NEW JOISTS
 - 1/2" CEMENT BOARD
 - 1/4" TILE

Revised Framing
 BATH 2 REPAIR & REFRAME