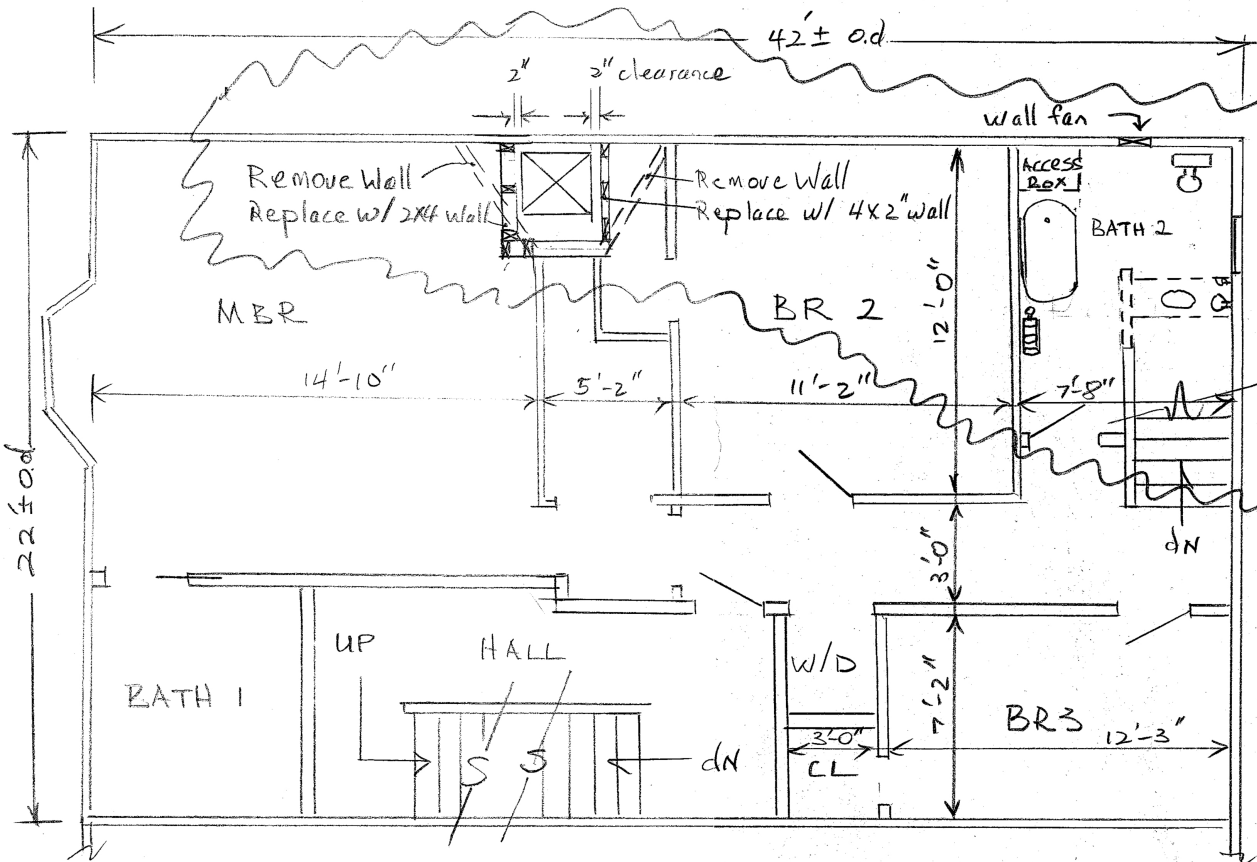


A1 Existing Floor Plans
15 Dow Street, Portland, ME 04102
55-D-12



Work Area:

- MBR: · Remove angled wall & replace
- BR 2: · Remove angled wall & replace
- BATH 2: · Remove fixtures: Tub, sink & toilet
- Remove plumbing access box
- Remove 30"+ wall section
- Remove wall fan
- Remove portion of broken joist
 (See detail, page 2)
- Install tempered-glass replacement window, same dimensions as existing

Second Floor Plan 1/4" = 1'-0"