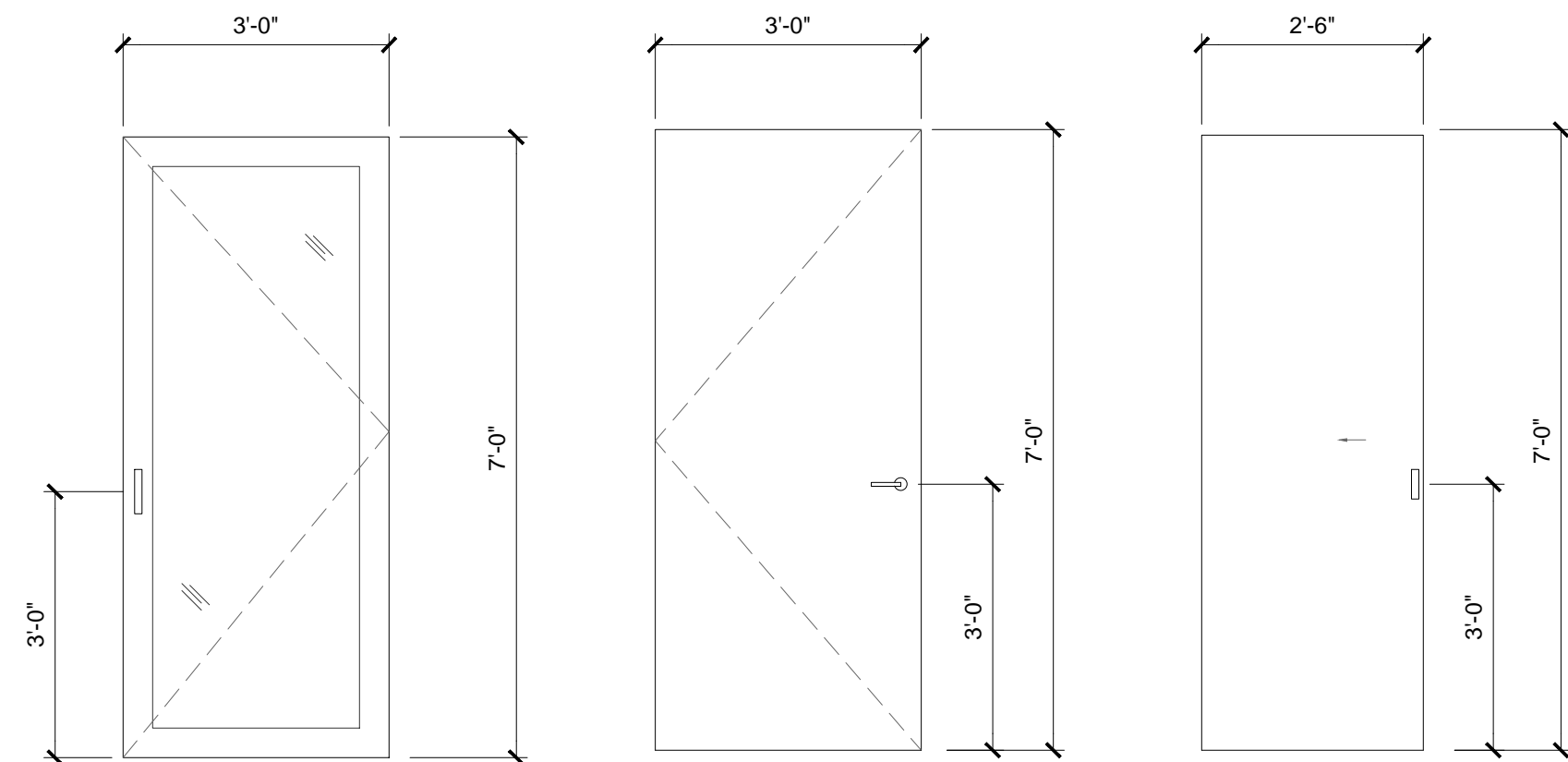


DOOR SCHEDULE

MARK	MANF.	MODEL	TYPE	SIZE			HARDWARE	SCREEN	REMARKS
				WIDTH	HEIGHT	THICK			
001	KOHLTECH		SWING	3'-0"	7'-0" +/-	1 3/4"	ENTRY		HEAD TO ALIGN W/ HEAD OF TYPE W-2 WINDOW
002	NORLAKE		INSULATED	2'-6"	7'-0"	3"	WALK IN COOLER		FOR WALK IN COOLER - SUPER INSULATED
005	SIMPSON		POCKET	2'-6"	7'-0"	1 3/4"	PRIVACY		
006	SIMPSON		POCKET	2'-6"	7'-0"	1 3/4"	PRIVACY		

DOOR NOTES:
 1. ALL GLASS TO BE TEMPERED AS REQUIRED BY CODE
 2. SEE ELEVATIONS & PLANS FOR HANDING

DOOR TYPES



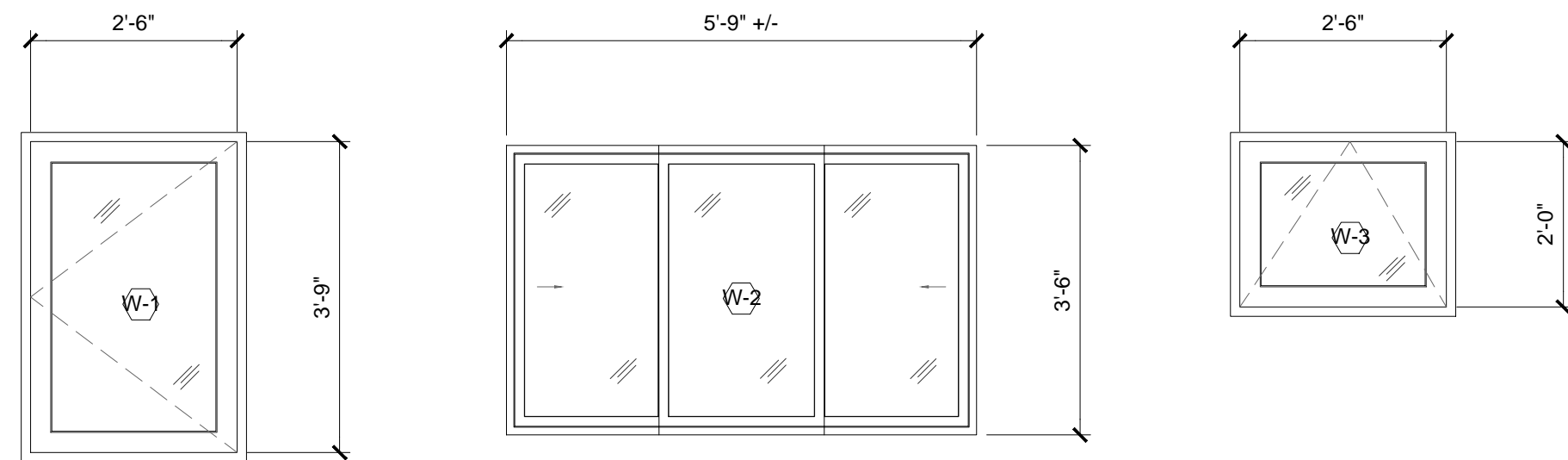
WINDOW SCHEDULE

TYPE	MANF.	MODEL	OPERATION	FRAME SIZE		SCREEN	GLAZING	REMARKS
				WIDTH	HEIGHT			
W-1			C	2'-6"	4'-0"	X	SEE NOTE 2	
W-2			G	5'-8" +/-	3'-6"		SEE NOTE 2	
W-3			A	2'-6"	2'-0"	X	SEE NOTE 2	

GENERAL NOTES:
 1. GENERAL CONTRACTOR SHALL CONFIRM ALL JAMB DEPTH DIMENSIONS PRIOR TO PLACING THE WINDOW ORDER.
TYPE KEY: C-CASEMENT G-GLIDER A-AWNING

WINDOW NOTES:
 1. ADJUST WINDOW WIDTHS AS NEEDED TO ACCOMMODATE STRUCTURAL MULLS. PROVIDE INFO IN SHOP DRAWINGS
 2. ALL GLASS TO BE TEMPERED AS REQUIRED BY CODE
 3. ALL WINDOWS TO BE PROVIDED BY KOHLTECH OR APPROVED EQUAL
 4. ALL SIZES SHOWN ARE FRAME SIZES, ALLOW 1" EXTRA IN HEIGHT AND WIDTH FOR ROUGH OPENINGS
 5. SEE ELEVATIONS FOR HANDING

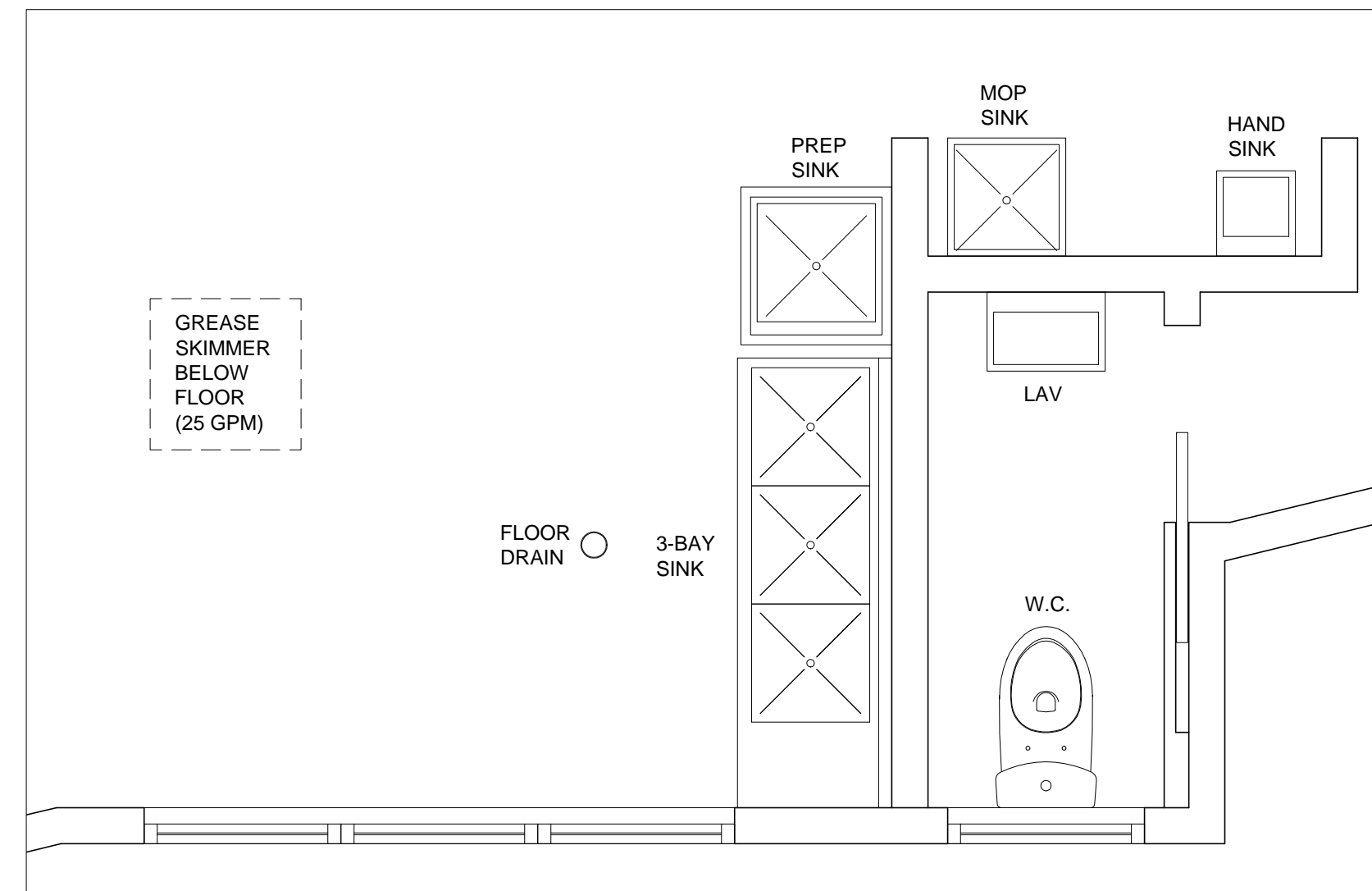
WINDOW TYPES



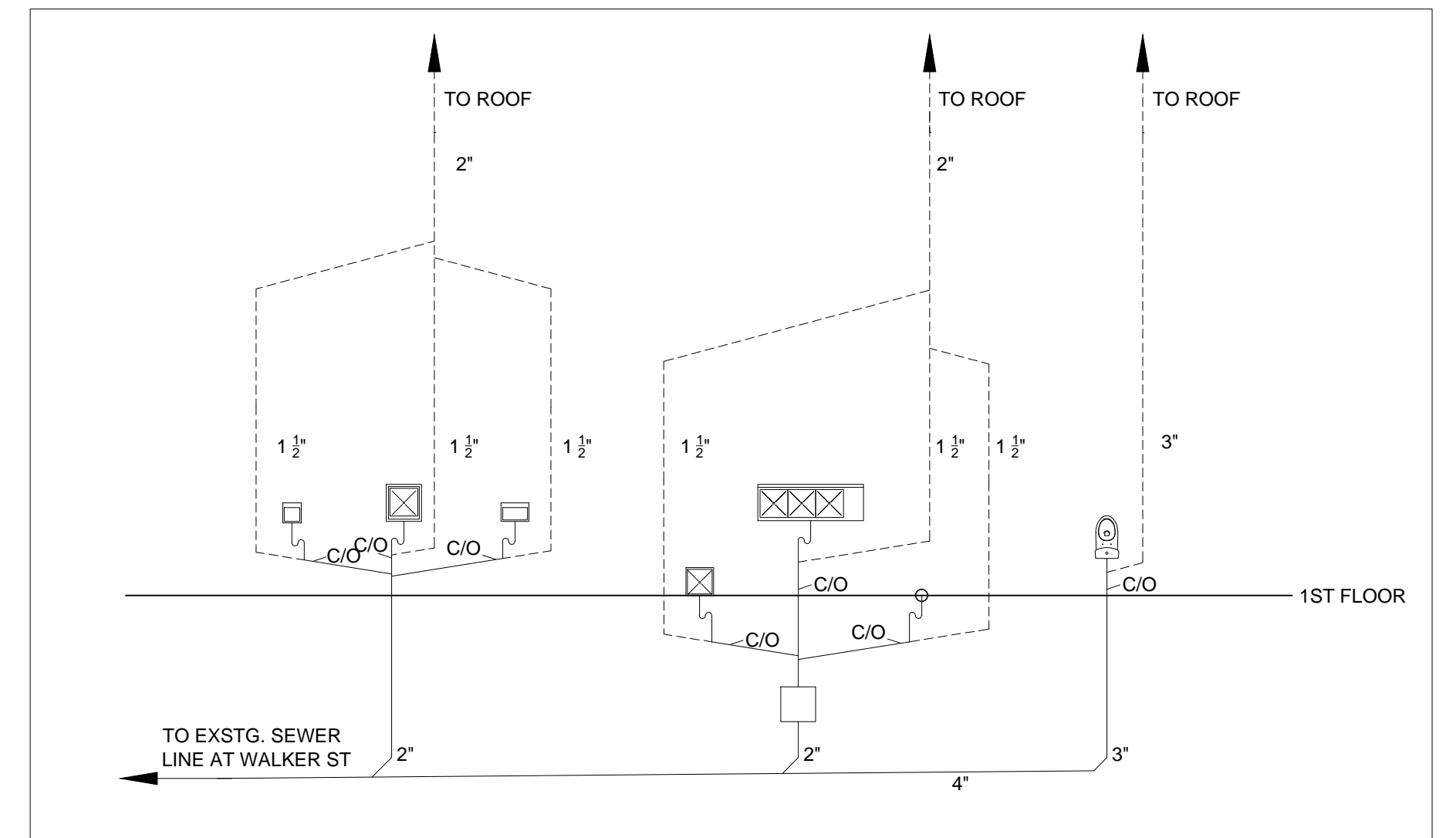
GENERAL LIGHTING NOTES

- All luminaires shall be constructed, wired, and installed in compliance with all applicable national, state and local codes. All luminaires shall conform to the Underwriters Laboratories Standards and to applicable codes exceeding those standards. All luminaires shall conform to any additional regulations necessary to obtain approval for use of specified luminaires in locations shown. All electrical components shall be Underwriters Laboratories approved equipment.
- All luminaires shall be installed complete with lamps as directed and with all equipment, materials, parts, attachments, devices, hardware, hangers, cables, supports, channels, frames and brackets to make a safe, complete and fully operative installation.
- The Contractor shall submit shop drawings, verify the lighting fixture part number for size and type to be compatible with use and location as indicated on the drawings. Approval of shop drawings by the Architect/Lighting Designer shall not relieve the Contractor of the responsibility of verifying the correct lighting fixture part number before ordering the lighting fixtures.
- All light switches to be located 36" a.f.f. unless otherwise noted.
- All outlets to be located at 18" a.f.f. unless otherwise noted.
- Provide blocking for lighting fixture housing as required.
- Modify joist for lighting fixture housings as required. Verify with structural engineers.
- Custom cabinets, interior millwork and plumbing fixtures are shown dashed for coordination.
- Electrical Contractor shall mark locations of all wall outlets, floor outlets and switches for review by Owner and Architect prior to construction.
- Verify lighting locations and quantities once fixtures have been specified.
- Refer to interior and exterior elevations for additional information regarding locations.

PLUMBING LAYOUT AND RISER DIAGRAM

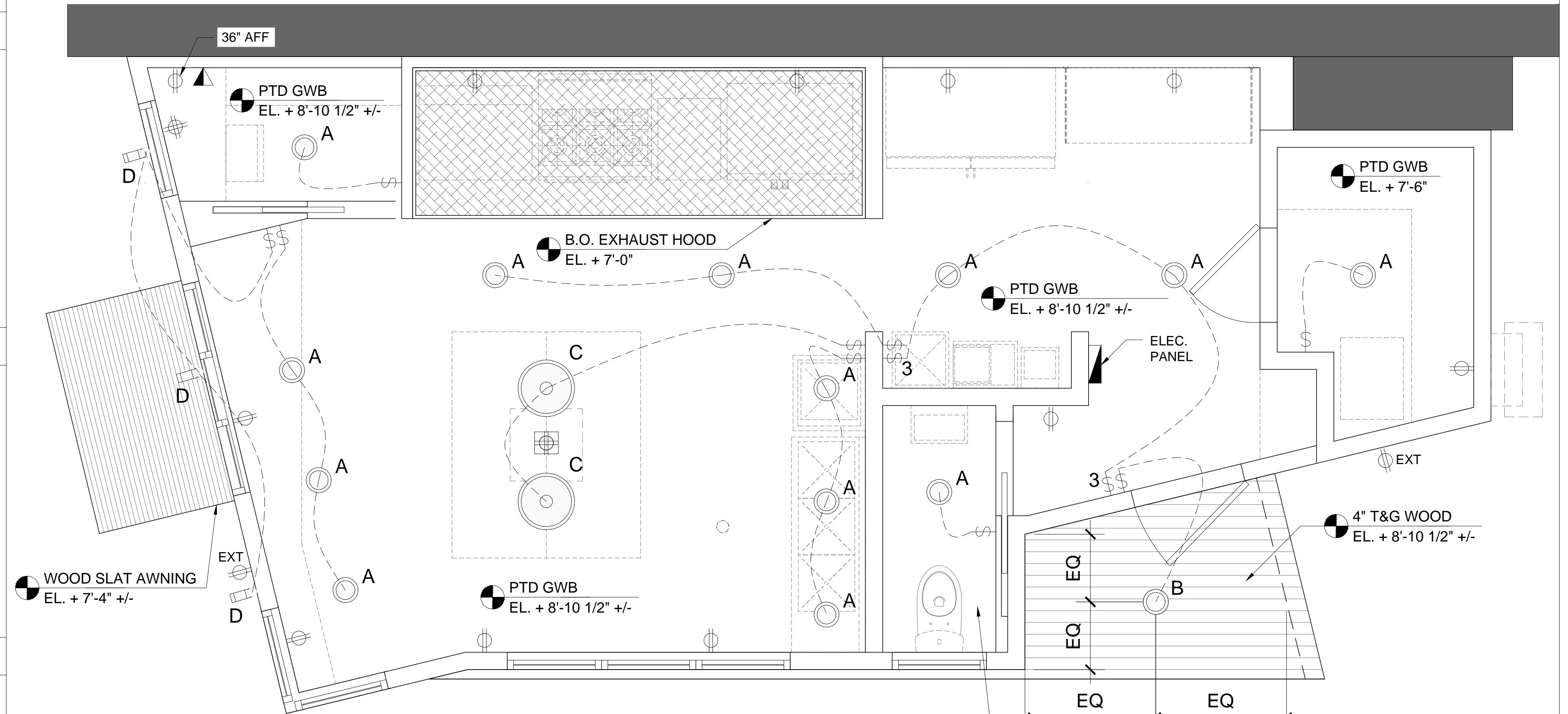


2 PLUMBING LAYOUT
 1/2" = 1'-0"



3 RISER DIAGRAM
 N.T.S.

RCP/ELECTRICAL PLAN

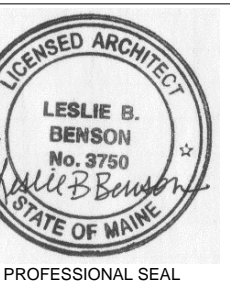


- LIGHTING SCHEDULE:**
- A SURFACE MOUNTED DOWNLIGHT
 - B SURFACE MOUNTED EXTERIOR DOWNLIGHT - WET LISTED
 - C PENDANT - DIRECT/INDIRECT
 - D DECORATIVE EXTERIOR WALL SCONCE - WET LISTED

- ELECTRICAL SCHEDULE:**
- ⊕ DUPLEX 110v OUTLET
 - ⊕ QUAD 110v FLOOR OUTLET (ST ST FINISH)
 - ⊕ GFI DUPLEX 110v OUTLET W/ GROUND FAULT INTERRUPT
 - ⊕ EXT DUPLEX 110v OUTLET INDICATED FOR EXTERIOR USE
 - ⊕ QUAD 110v OUTLET
 - 240v 240v OUTLET
 - ⊕ 2-WAY SWITCH, W/ DIMMER AS REQ'D
 - ⊕ 3-WAY SWITCH, W/ DIMMER AS REQ'D
 - TEL DATA
 - TELEPHONE

1 RCP/ELECTRICAL PLAN
 1/2" = 1'-0"

ferreterogers DESIGN | leslie benson DESIGNS
 19 Commercial Street Portland Maine 04101



SKILLET TAKEOUT & CATERING
 722 CONGRESS STREET
 Portland Maine 04102

CONSULTANT

STATUS: HISTORIC REVIEW
 NOT FOR CONSTRUCTION

ISSUE DATE: 7.23.14

PROJECT NO: 2014-100

A6.0
 SCHEDULES: PLUMBING & RCP/ELECTRICAL