

722 CONGRESS STREET - SKILLET TAKEOUT & CATERING

PROJECT TEAM

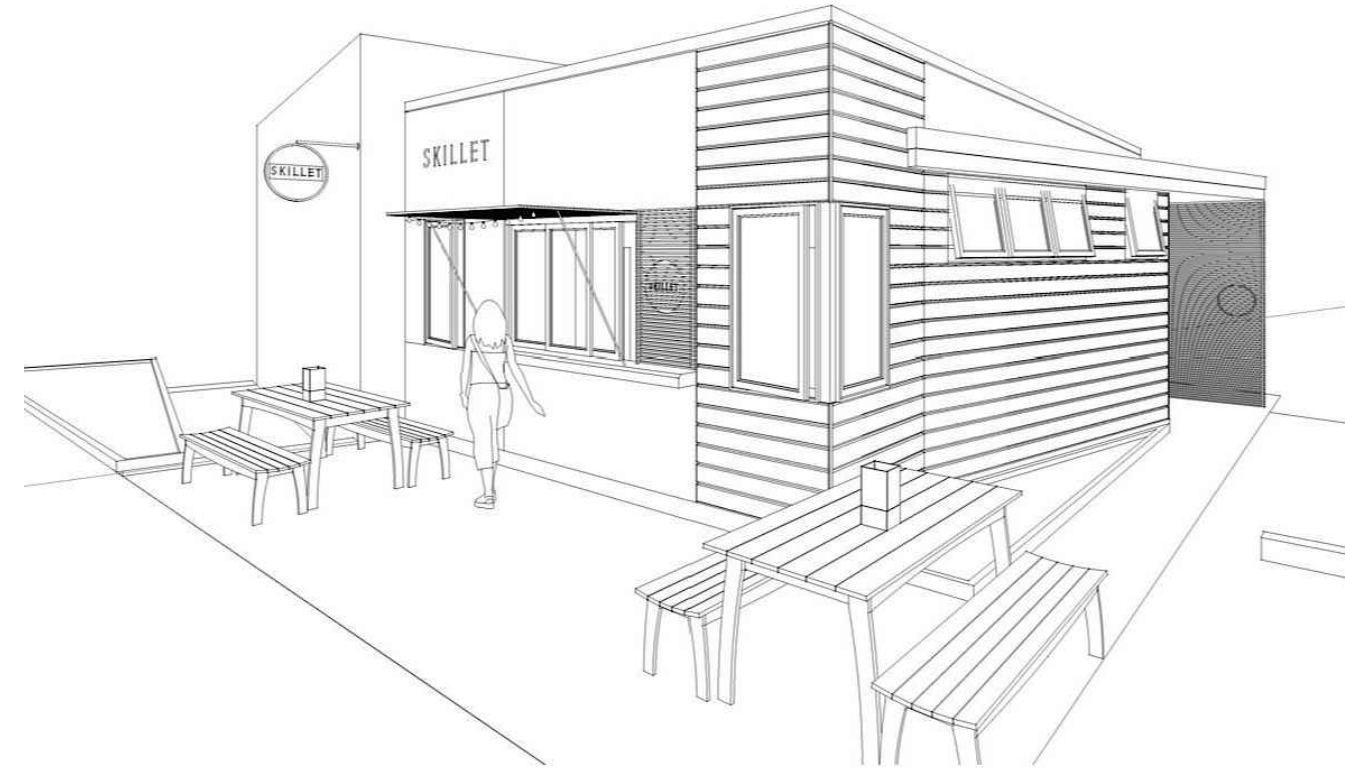
OWNER:
Natalie DiBenedetto
4 Walker Street
Portland, ME 04101
phone: 845.802.3195
email: natalie.dibenedetto@gmail.com

ARCHITECT:
Leslie Benson Designs, LLC
Leslie Benson, R.A.
19 Commercial Street
Portland, ME 04101
phone: 217.553.0672
email: lesliedesigns@gmail.com

DESIGNER:
Ferrer Design Studio
Amy Ferrer Rogers
19 Commercial Street
Portland, ME 04101
phone: 207.837.9700
email: amy@ferrerdesign.com

BUILDER:
Dovetail Group, Inc.
Chris Greenlaw
68 Raymond Cape Rd
Casco, ME 04015
phone(o): 207.221.2722
phone(c): 207.415.8604
fax: 207.221.5654
email: dovetail@maine.rr.com

PERSPECTIVE



LOCUS MAP



CODE SUMMARY

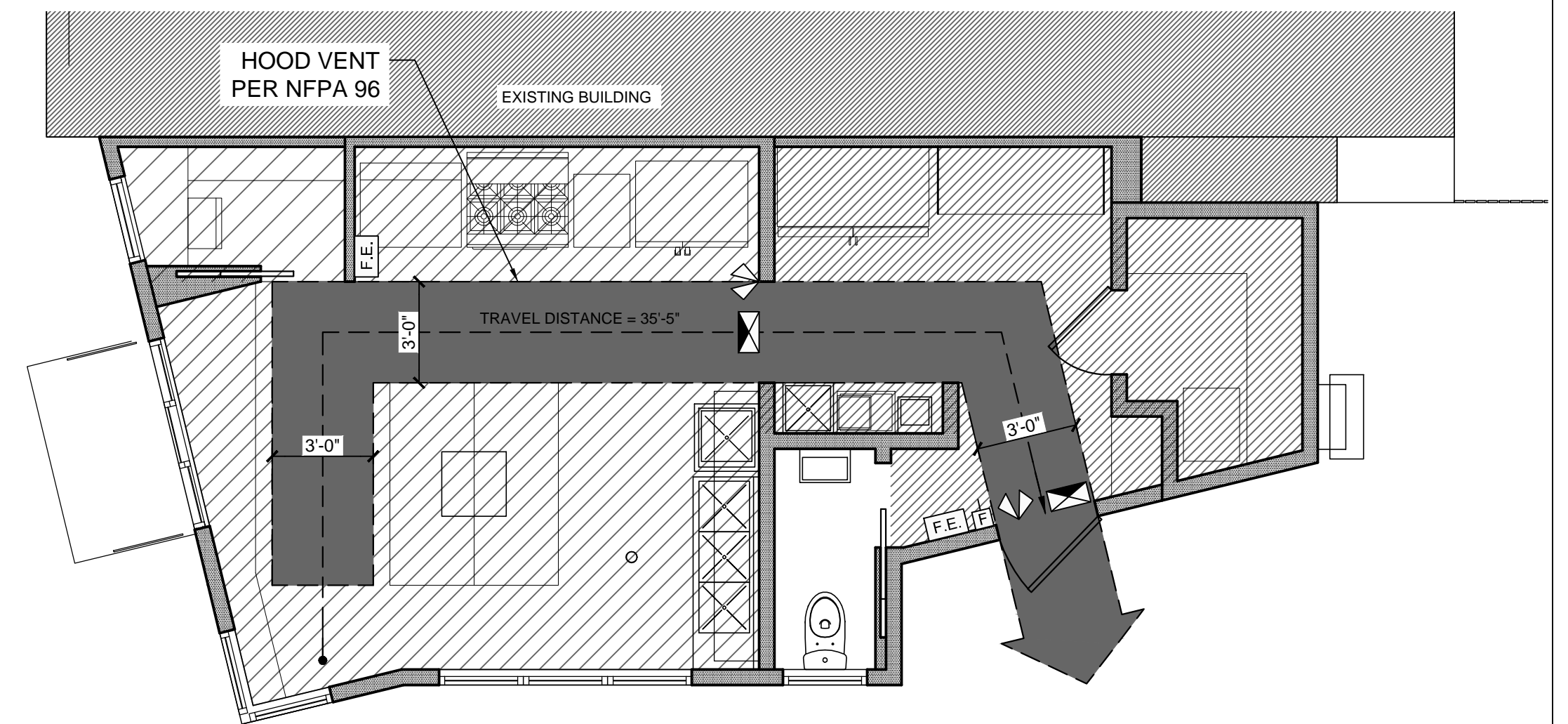
PROJECT ADDRESS	722 CONGRESS ST, PORTLAND ME 04102	
PROJECT TYPE	TAKE-OUT RESTAURANT AND CATERING KITCHEN	
SQUARE FOOTAGE	485 GSF	
BUILDING CODE	CITY OF PORTLAND IBC 2009	
	NFPA101	

IBC		CODE REF.
OCCUPANCY TYPE	GROUP M - MERCANTILE	309.1
OCCUPANT LOAD - STORAGE	142 SF/300 GROSS = 1	TABLE 1004.1.1
OCCUPANT LOAD - KITCHENS, COMMERCIAL	241 SF/200 GROSS = 1	TABLE 1004.1.1
OCCUPANT LOAD - BUSINESS	22 SF/100 GROSS = 1	TABLE 1004.1.1
OCCUPANT LOAD - TOTAL	3	
MINIMUM # EXITS	1 - MAX 49 OCCUPANTS & 75' TRAVEL DISTANCE, 1ST STORY	TABLE 1021.2
EGRESS WIDTH	3X.2"=6", 36" MIN REQ'D FOR LESS THAN 50 OCCUPANTS	1105.1, 1018.2
EGRESS DOOR	32" MIN CLEAR WIDTH	1008.1.1
COMMON PATH OF TRAVEL	NA - ONLY ONE EXIT REQ'D	1014.3
EXIT THROUGH INTERVENING SPACES	NOT THROUGH KITCHENS OR STORAGE ROOMS	1014.2.4
EXIT ACCESS TRAVEL DISTANCE	200' FROM MOST REMOTE POINT	TABLE 1016.1
DISTANCE BETWEEN EXITS	NA - ONLY ONE EXIT REQ'D	1015.2.1.2

NATIONAL PLUMBING CODE		CODE REF.
PLUMBING FIXTURE COUNT	1 UNISEX TOILET FACILITY - DESIGNED FOR USE BY NO MORE THAN ONE PERSON AT A TIME, FOR FOOD SERVICE ESTABLISHMENTS WITH 15 OR FEWER EMPLOYEES	7.21.8
SERVICE SINK	1 PER FLOOR	TABLE 7.21.2

NFPA 101		CODE REF.
OCCUPANCY TYPE	MERCANTILE	6.1.10
SUBCLASSIFICATION	CLASS C (3000 SF OR LESS, ONE STORY)	36.1.4.2.1
OCCUPANCY LOAD - STORAGE	185/300 = 1	TABLE 7.3.1.2
OCCUPANCY LOAD - KITCHEN	250/100 = 2	
OCCUPANCY LOAD - TOTAL	3	
NUMBER OF EXITS	1	7.4.1.1, 36.2.4.3
EGRESS CAPACITY - LEVEL COMPONENTS	3X.2"=6", 36" MIN REQ'D	TABLE 7.3.3.1
MIN. DOOR WIDTH	32"	7.2.1.2.4
MIN. CORRIDOR WIDTH	36"	7.3.4.1
COMMON PATH OF TRAVEL	NA - ONLY ONE EXIT REQ'D	36.2.5.3
REQ'D SEP. BETWEEN SAME OCCUPANCY	0 HOUR	TABLE 6.1.14.1
TRAVEL DISTANCE TO EXITS	75' MAX	36.2.4.3
VENTILATION	COMPLY WITH NFPA 91	9.2.2
COMMERCIAL COOKING EQUIPMENT	COMPLY WITH NFPA 96 - STANDARD FOR VENTILATION CONTROL AND FIRE PROTECTION OF COMMERCIAL COOKING OPERATIONS	9.2.3

LIFE SAFETY PLAN



1 LIFE SAFETY PLAN

1/4" = 1'-0"

	MERCANTILE, STORAGE 1:300, 142 SF/300 SF = 1		FIRE EXTINGUISHER
	MERCANTILE, KITCHENS - COMMERCIAL 1:200, 241 SF/200 SF = 1		EMERGENCY LIGHTS
	BUSINESS 1:100, 22 SF/100 SF = 1		EXIT SIGN
	TOTAL OCCUPANCY = 3 TOTAL NET SF = 405 SF +/-		PULL STATION

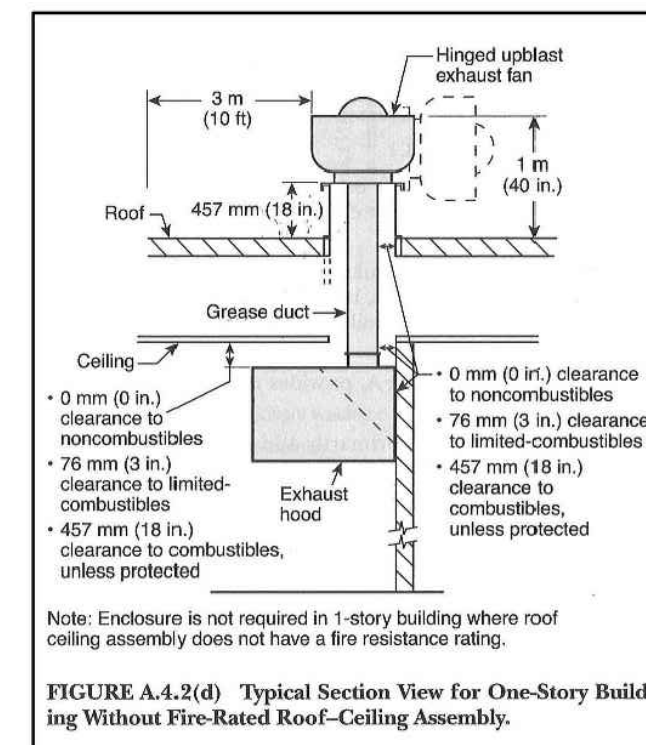


FIGURE A4.2(d) Typical Section View for One-Story Building Without Fire-Rated Roof-Ceiling Assembly.

2 EXHAUST HOOD CLEARANCES

N.T.S.

INSULATION FACTORS

BUILDING COMPONENT	R/U VALUE
WALLS - ABOVE GRADE	R-20
WALLS - BELOW GRADE	R-10
SLAB ON GRADE FLOOR	R-10
ROOF	R-38.4
WINDOWS	U-28

MATERIAL KEY

	COURSE GRAVEL
	CONCRETE
	STONE
	EARTH/COMPACT FILL
	GYPSUM/PLASTER
	PLYWOOD
	BATT INSULATION
	FINISH WOOD
	ROUGH WOOD
	BLOCKING WOOD
	CONCRETE MASONRY
	BRICK MASONRY
	SAND/FINE GRAVEL
	RIGID INSULATION
	GLASS

ARCHITECTURAL ABBREVIATIONS

AB	ANCHORBOLT	D	DRYER	GA	GAUGE
ADDL	ADDITIONAL	DBL	DOUBLE	GAL	GALLON
ADMIN	ADMINISTRATION	DEFL	DEFLECTION	GALV	GALVANIZED
AFF	ABOVE FINISH FLOOR	DEMO	DEMOLITION	GC	GENERAL CONTRACTOR
ALUM	ALUMINUM	DF	DRINKING FOUNTAIN	GL	GLASS
AP	ACCESS PANEL	DIA	DIAMETER	GR	GRANITE
APV	ASPHALT PAVEMENT	DIAG	DIAGONAL	GR	GYPSUM WALL BOARD
ARCH	ARCHITECT	DIM	DIMENSION	GYP	GYPSUM
BD	BOARD	DR	DIRECTOR/DOOR	HD	HIGH DENSITY
BIT	BITUMINOUS	DIV	DIVISION	HR	HOUR
BLDG	BUILDING	DN	DRAWING	HC	HOLLOW CORE
BLKG	BLOCKING	DWG	DRAWING	HDWR	HARDWARE
BM	BENCHMARK	E	EAST	HFS	HALF FULL SCALE
BRG	BEARING	EA	EACH	HGT	HEIGHT
BTW	BETWEEN	EF	EXHAUST FAN	HM	HOLLOW METAL
CAB	CABINET	EJ	EXPANSION JOINT	HO	HOLD OPEN
CB	CATCH BASIN	EL	ELEVATION	HORZ	HORIZONTAL
CEM	CEMENT	ELEV	ELEVATOR	HTG	HEATING
CF	CUBIC FEET	ELEC	ELECTRIC/ELECTRICAL	HVAC	HEATING, VENTILATION & AIR CONDITIONING
CIRC	CIRCLE/CIRCULAR	EQ	EQUAL	HW	HOT WATER
CJ	CONTROL JOINT	EWC	ELECTRIC WATER COOLER	HYD	HYDRANT
CL	CENTER LINE	EXAM	EXAMINATION	INCL	INCLUDE/INCLUDING
CLG	CEILING	EXIST	EXISTING	ID	INSIDE DIAMETER
CLO	CLOSET	EXT	EXTERIOR	IN	INCH
CMU	CONCRETE MASONRY UNIT	FBO	FURNISHED BY OWNER	INSUL	INSULATE/INSULATION
COL	COLUMN	FCO	FLOOR CLEAN OUT	INT	INTERIOR
CONC	CONCRETE	CO	CLEAN OUT	INV	INVERT
CONST	CONSTRUCTION	FCP	FIRE CONTROL PANEL	JAN	JANITOR
CONT	CONTINUE CONTINUOUS	FE	FIRE EXTINGUISHER	JC	JANITOR CLOSET
COOR	CORRUGATED	FIN	FINISH	JT	JOINT
COORD	COORDINATED	FL	FLOOR	KIT	KITCHEN
CRS	COURSE	FOS	FACE OF STUD	LAM	LAMINATE/LAMINATED
CTV	CABLE TELEVISION LINE	FRP	FIBERGLASS REINFORCED	LAV	LAVATORY
CUH	CABINET UNIT HEATER	FT	FOOT	LCC	LEAD COATED COPPER
CY	CUBIC YARD	FTG	FOOTING	LF	LINEAR FOOT
		F.O.	FACE OF	LG	LEAD
				LIN	LINEN

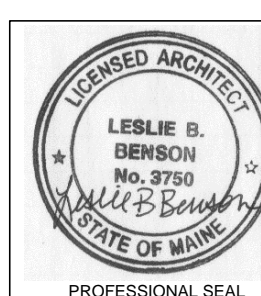
ARCHITECTURAL SYMBOLS

FINISH MATERIAL	CL1	PROPOSED ELEVATION	
ROOM NUMBER	101	BUILDING SECTION	
DOOR NUMBER	101A	BUILDING ELEVATION	
WINDOW TYPE	NO	WALL SECTION	
PARTITION TYPE	M4	REVISION REFERENCE	
FIRE EXTINGUISHER, RECESSED CABINET	EE	FIRE EXTINGUISHER SURFACE MOUNT	FE
DETAIL		COLUMN REFERENCE LINE	X

DRAWING LIST

SHEET NO.	SHEET TITLE
C1.0	COVER SHEET
A1.0	SITE PLAN & DIMENSIONAL FLOOR PLAN
A1.1	FLOOR PLAN
A2.0	INTERIOR & EXTERIOR ELEVATIONS
A3.0	BUILDING SECTIONS
A3.1	WALL SECTIONS & PARTITION TYPES
A6.0	SCHEDULES, PLUMBING AND RCP/ELECTRICAL

ferrer rogers DESIGN | leslie benson DESIGNS
 19 Commercial Street Portland Maine 04101



722 CONGRESS STREET
 Portland Maine 04102

CONSULTANT

STATUS: PERMIT SET
NOT FOR CONSTRUCTION

ISSUE DATE: 7.11.14

PROJECT NO: 2014-100

C1.0
COVER SHEET