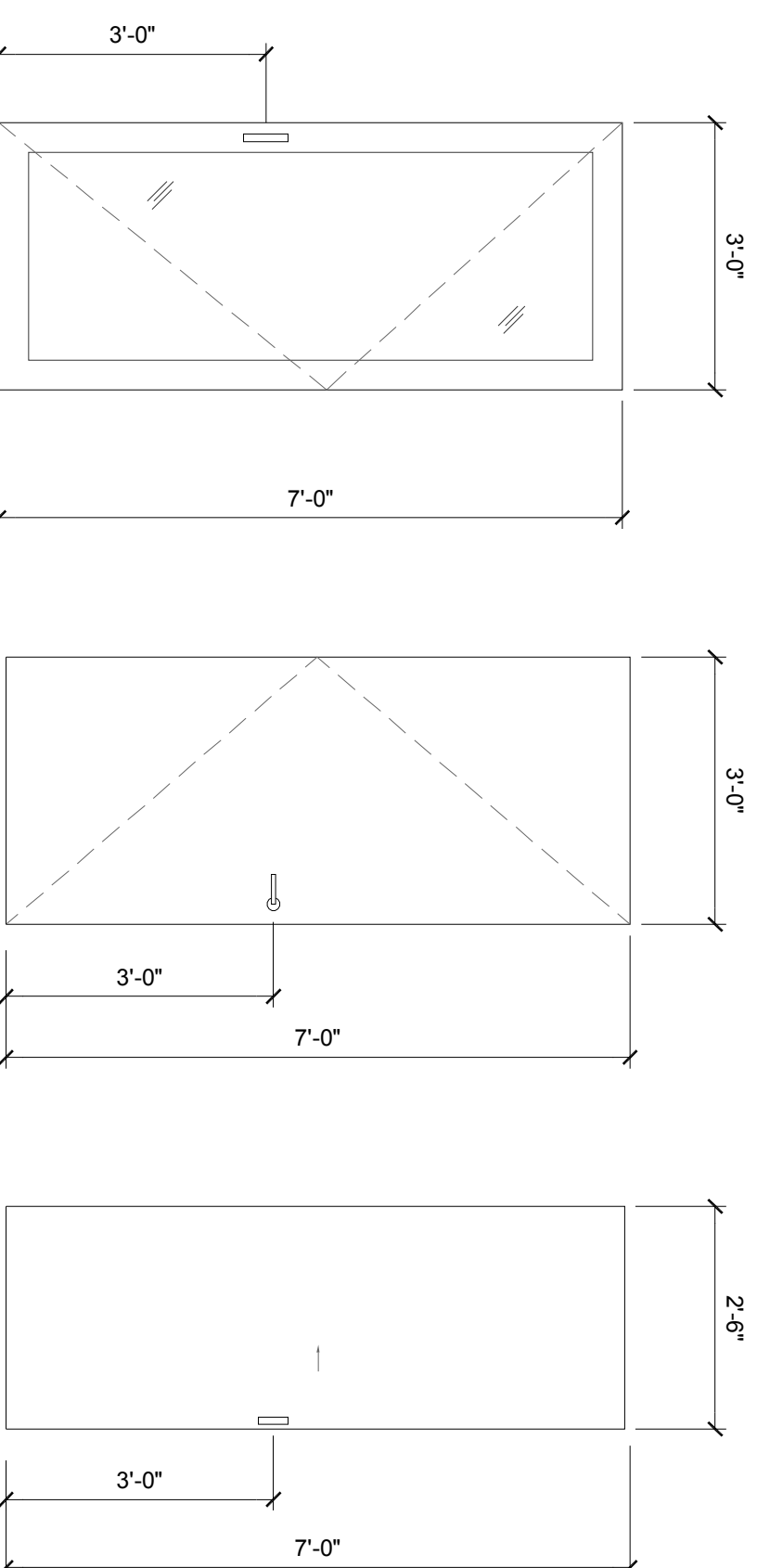


# DOOR SCHEDULE

MARK	MANF.	MODEL	TYPE	SIZE		THICK	HARDWARE	SCREEN	REMARKS
				WIDTH	HEIGHT				
001	KOHLTECH		SWING	3'-0"	7'-0" +/-	1 3/4"	ENTRY		HEAD TO ALIGN W/ HEAD OF TYPE W-2 WINDOW
002	NORLAK		INSULATED	2'-6"	7'-0"	3"	WALK IN COOLER		FOR WALK IN COOLER - SUPER INSULATED
006	SIMPSON		POCKET	2'-6"	7'-0"	1 3/4"	POCKET		PRIVACY
				2'-6"	7'-0"	1 3/4"	POCKET		PRIVACY

DOOR NOTES:  
 1. ALL GLASS TO BE TEMPERED AS REQUIRED BY CODE  
 2. SEE ELEVATIONS & PLANS FOR HANDING

# DOOR TYPES



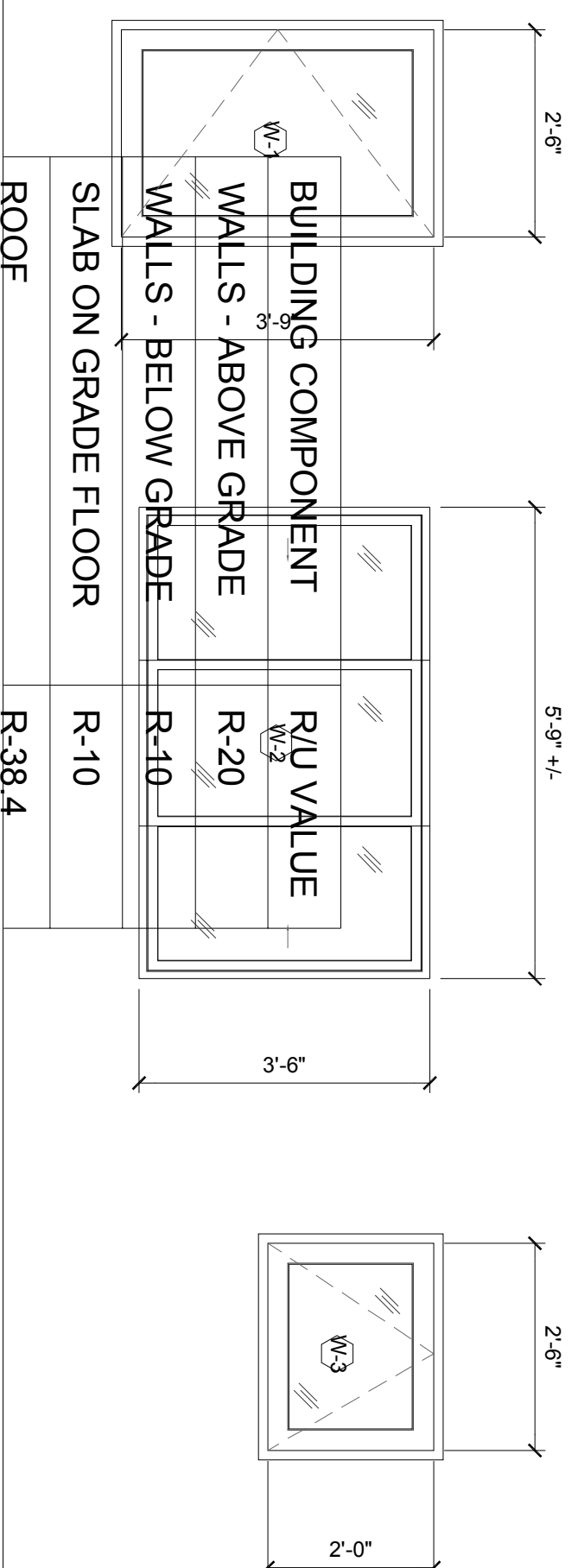
# WINDOW SCHEDULE

TYPE	MANF.	MODEL	OPERATION	FRAME SIZE		SCREEN	GLAZING	REMARKS
				WIDTH	HEIGHT			
W-1			C	2'-6"	4'-0"	X	SEE NOTE 2	
W-2			G	5'-9" +/-	3'-6"		SEE NOTE 2	
W-3			A	2'-6"	2'-0"	X	SEE NOTE 2	

GENERAL NOTES:  
 1. GENERAL CONTRACTOR SHALL CONFIRM ALL JAMB DEPTH DIMENSIONS PRIOR TO PLACING THE WINDOW ORDER  
 TYPE KEY: C-CASERMENT G-GLIDER A-AWNING

WINDOW NOTES:  
 1. ADJUST WINDOW WIDTHS AS NEEDED TO ACCOMMODATE STRUCTURAL MULLS. PROVIDE INFO IN SHOP DRAWINGS  
 2. ALL WINDOWS TO BE PROVIDED WITH FINISH OR APPROVED EQUAL  
 3. ALL SIZES SHOWN ARE FRAME SIZES. ALLOW 1" EXTRA IN HEIGHT AND WIDTH FOR ROUGH OPENINGS  
 5. SEE ELEVATIONS FOR HANDING

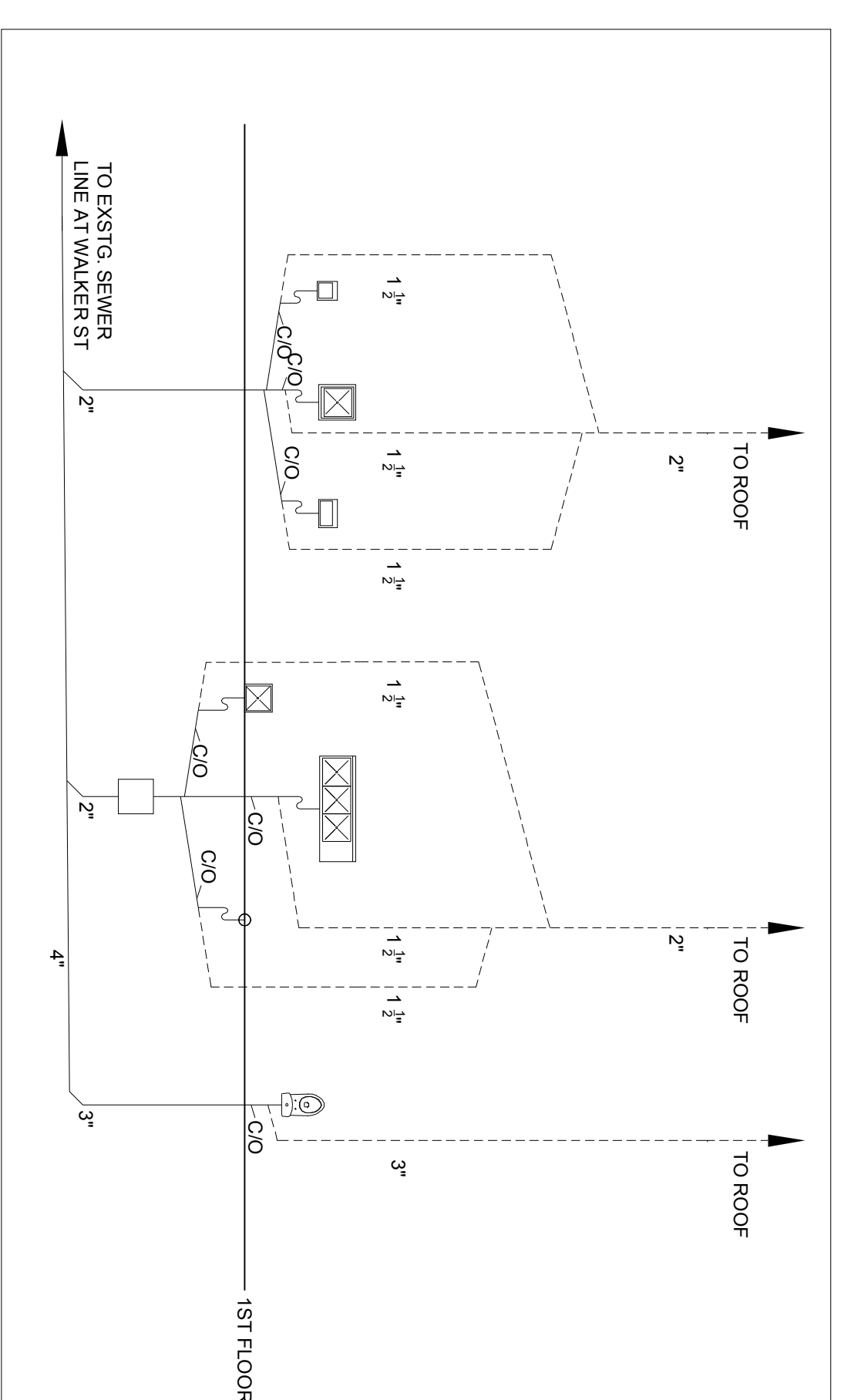
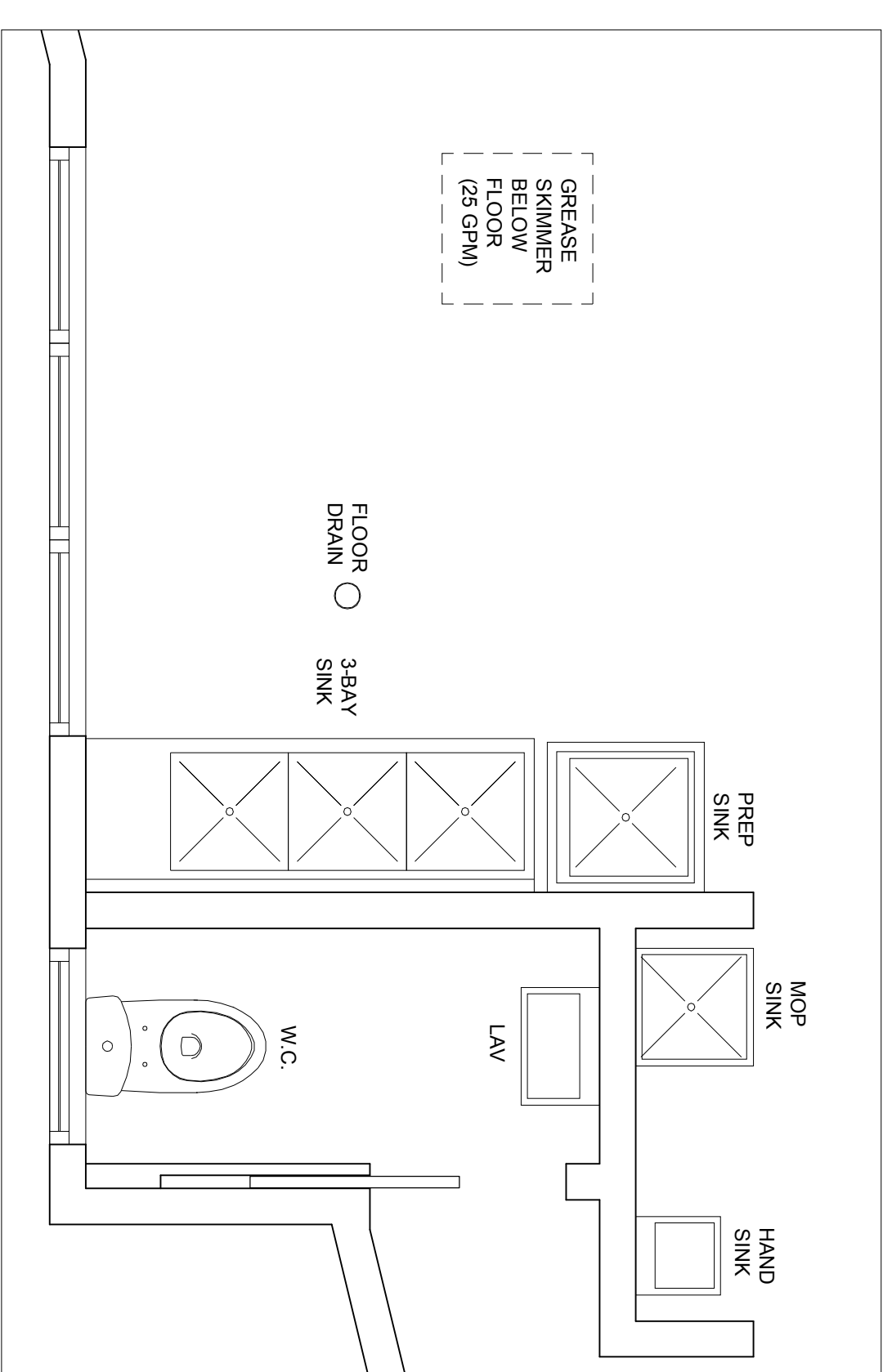
# WINDOW TYPES



# GENERAL LIGHTING NOTES

- All luminaires shall be constructed, wired and installed in compliance with all applicable national, state and local codes. All luminaires shall conform to the Underwriters Laboratories Standards and to applicable codes exceeding those standards. All luminaires shall conform to any additional requirements necessary to obtain listings for the intended application and location shown. All electrical components shall be Underwriters Laboratories approved equipment.
- All luminaires shall be installed complete with lamps as directed and with all equipment, materials, parts, attachments, devices, hardware, riggers, cables, supports, channels, frames and brackets to make a safe, complete and fully operative installation.
- The Contractor shall submit shop drawings, verify the lighting fixture part number for size and type to be compatible with use and location as indicated on the drawings. Approval of shop drawings by the Architect/ Lighting Designer shall not relieve the Contractor of the responsibility of verifying the correct lighting fixture part number before ordering the lighting fixtures.
- All light switches to be located 36" a.f.f. unless otherwise noted.
- All outlets to be located at 18" a.f.f. unless otherwise noted.
- Provide blocking for lighting fixture housing as required.
- Modify joist for lighting fixture housings as required. Verify with structural engineers.
- Custom cabinets, interior millwork and plumbing fixtures are shown dashed for coordination.
- Electrical Contractor shall mark locations of all wall outlets for the fields and knockouts shown by Owner and Architect prior to construction.
- Verify lighting locations and quantities once fixtures have been specified.
- Refer to interior and exterior elevations for additional information regarding locations.

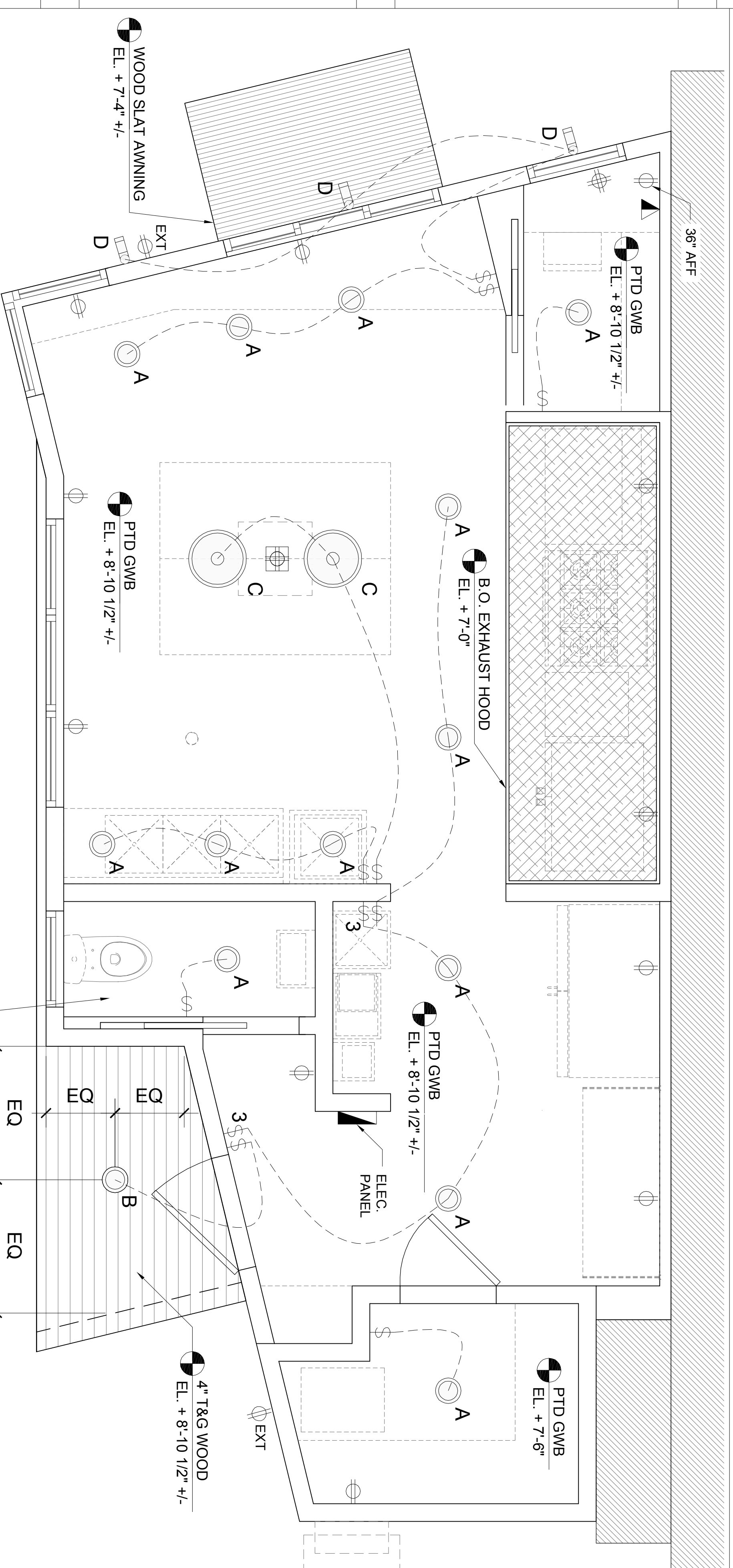
# PLUMBING LAYOUT AND RISER DIAGRAM



2 PLUMBING LAYOUT  
 1/2" = 1'-0"

3 RISER DIAGRAM  
 N.T.S.

# RCP/ELECTRICAL PLAN



## LIGHTING SCHEDULE:

- A SURFACE MOUNTED DOWNLIGHT
- B SURFACE MOUNTED EXTERIOR DOWNLIGHT - WET LISTED
- C PENDANT - DIRECT/INDIRECT
- D WET LISTED

## ELECTRICAL SCHEDULE:

- ⊕ DUPLEX 110V. OUTLET
- ⊕ QUAD 110V. FLOOR OUTLET (ST ST FINISH)
- ⊕ DUPLEX 110V. OUTLET W/ GROUND FAULT INTERRUPT
- ⊕ DUPLEX 110V. OUTLET INDICATED FOR EXTERIOR USE
- ⊕ QUAD 110V. OUTLET
- ⊕ 240V. OUTLET
- ⊕ 2-WAY SWITCH, W/ DIMMER AS REQD.
- ⊕ 3-WAY SWITCH, W/ DIMMER AS REQD.
- ⊕ TEL. DATA
- ⊕ TELEPHONE

1 RCP/ELECTRICAL PLAN  
 1/2" = 1'-0"

