

CONCRETE REINFORCING SPLICE SCHEDULE

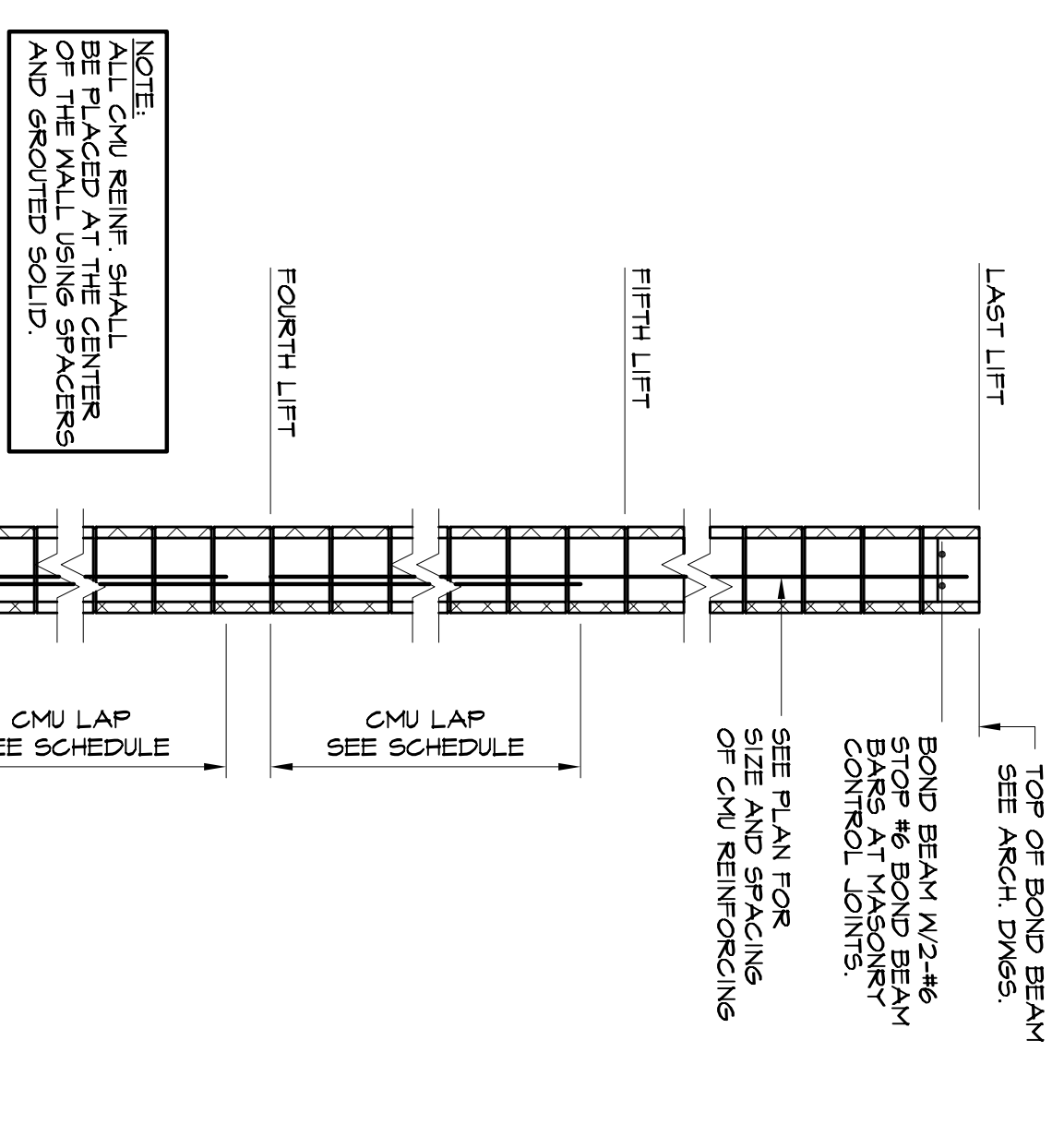
BAR SIZE	"LAP SPLICES"		"TENSION LAP SPLICES"		"COMPRESSION" LAP SPLICES
	ALL CONCRETE	12'-0000	TOP BARS	OTHER BARS	
3	14"	28"	21"	24"	12"
4	18"	37"	24"	32"	15"
5	23"	46"	30"	40"	19"
6	27"	56"	36"	48"	23"
7	32"	67"	43"	58"	27"
8	36"	78"	51"	70"	31"
9	41"	90"	60"	84"	36"
10	46"	102"	70"	101"	41"
11	50"	110"	81"	112"	45"

LOOSE LINTEL SCHEDULE

OPENING	LINTEL	BEARING EACH END	REMARKS
9'-6" OR LESS	23x31/4x4	4"	SLV
OVER 9'-6" THRU 9'-6"	24x31/4x4	6"	LLV
OVER 9'-6" THRU 7'-6"	26x31/4x6	6"	LLV
OVER 7'-6" THRU 9'-6"	26x31/4x8	8"	LLV

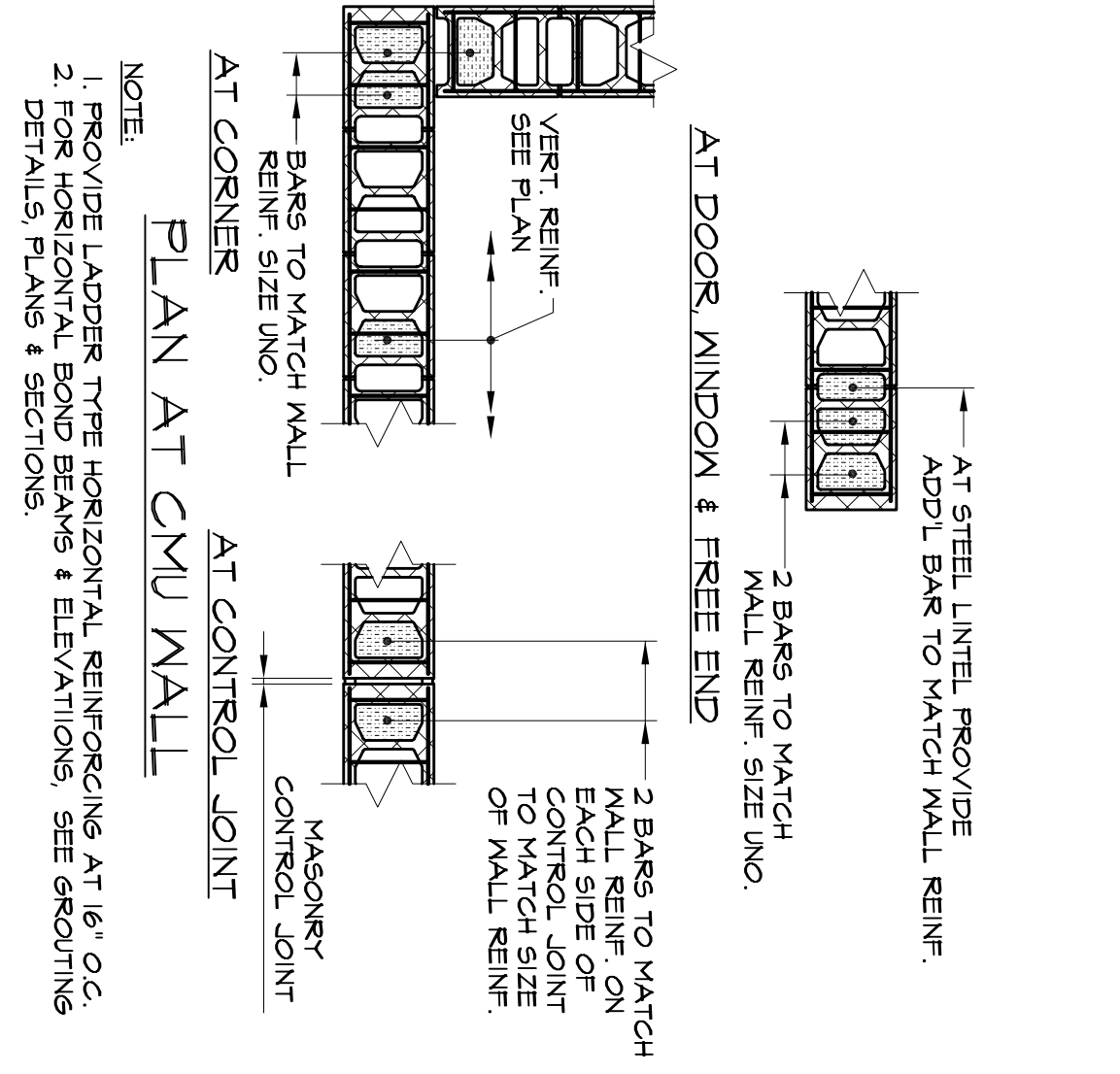
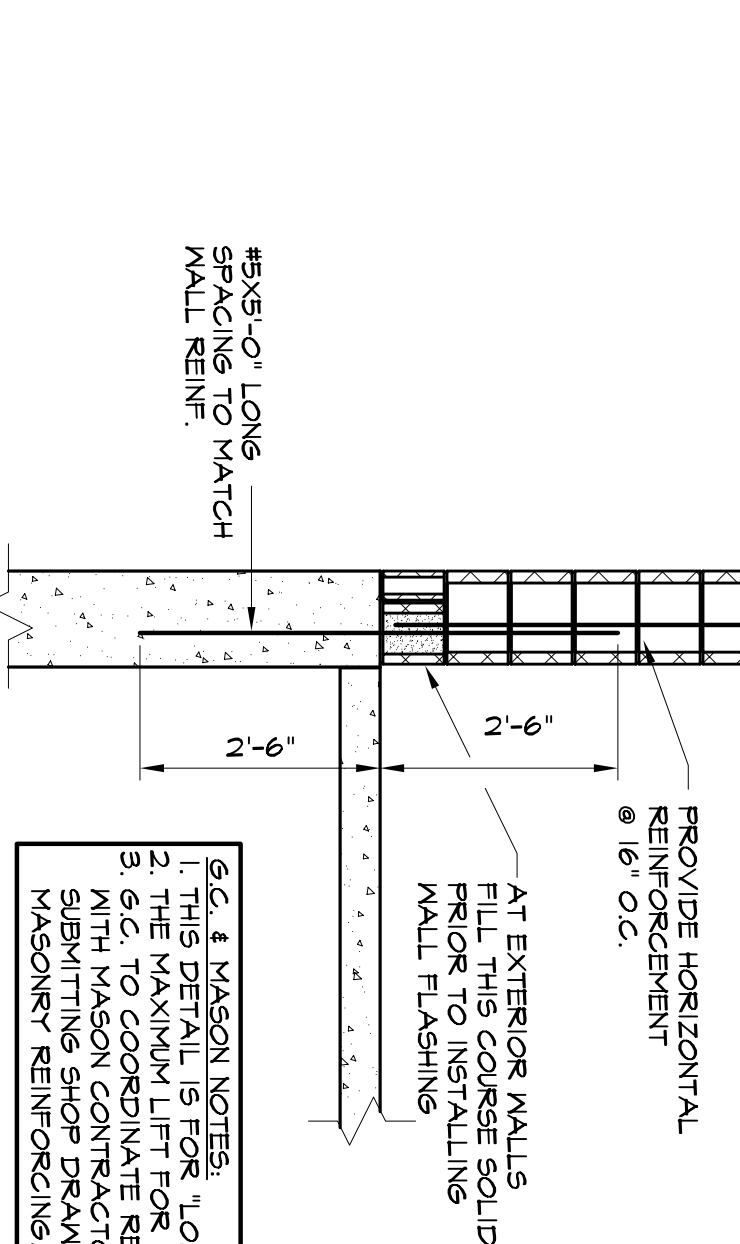
NOTES:
 1. ALL SPLICES TO BE "LAP SPLICES" UNLESS NOTED OTHERWISE IN SECTIONS.
 2. TENSION AND COMPRESSION LAP SPLICES WILL BE INDICATED ON PLANS AND SECTIONS.
 3. A TOP BAR IS A HORIZONTAL WITH AT LEAST 12" OF FRESH CONCRETE BELOW.

NOTES:
 1. WHERE ANGLE LINTEL IS ABE REQUIRED PROVIDE ONE ANGLE FOR EACH END OR LESS THE THICKNESS OF MASONRY.
 2. FOR OPENINGS OVER 6'-0" PROVIDE SOLID MASONRY JAMB UNDER LINTEL AT EACH SIDE OF OPENING AND PROVIDE SUPPORT AT MIDPOINT DURING CONSTRUCTION.
 3. LINTELS INDICATED ON PLAN SUPERSEDE THE REQUIREMENTS OF THIS SCHEDULE.
 4. ALL EXTERIOR LINTELS SHALL BE HOT DIPPED GALVANIZED.
 5. ALL OTHER LINTELS SHALL BE PRIME PAINTED.

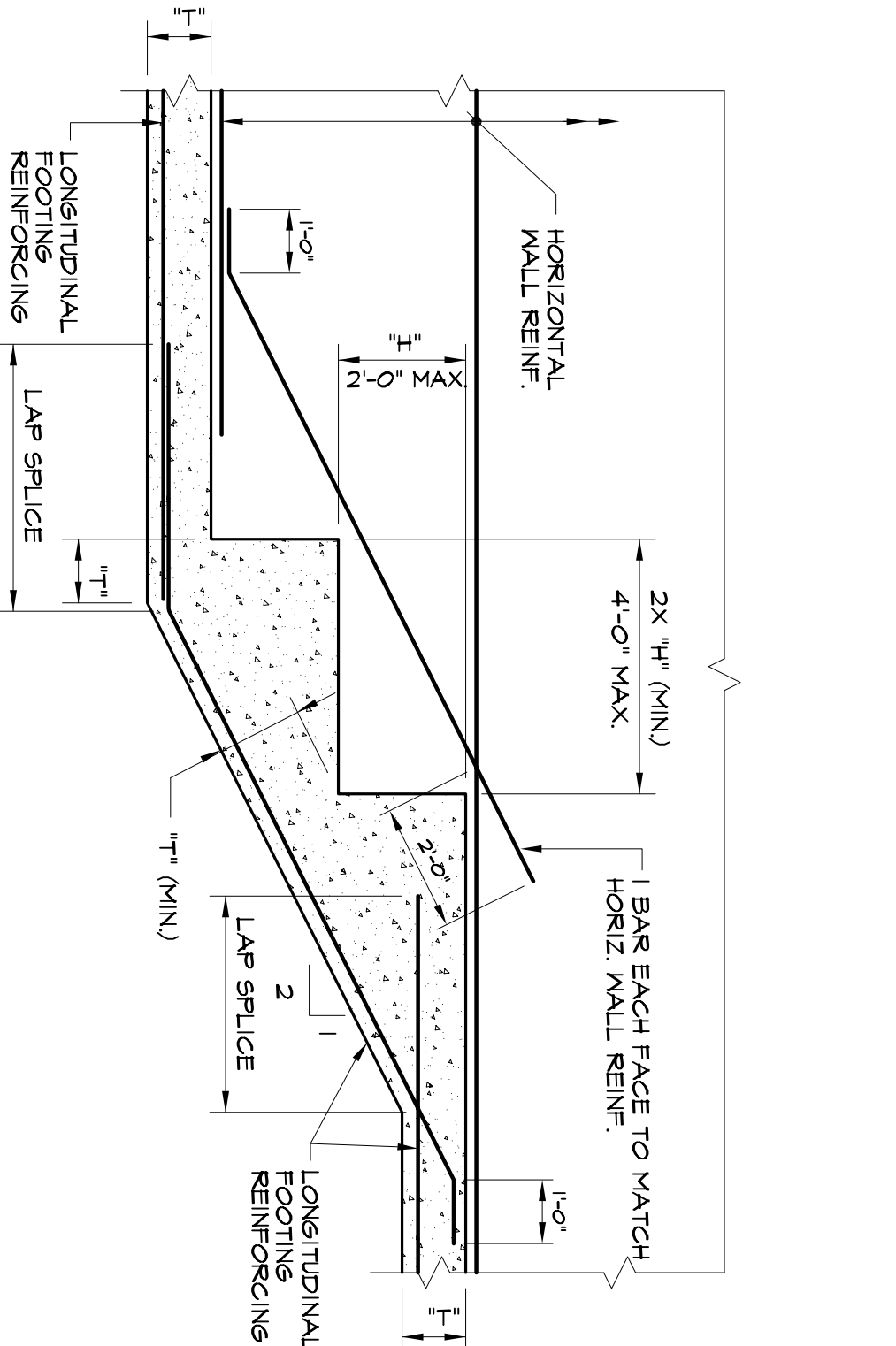


CMU LAP SCHEDULE

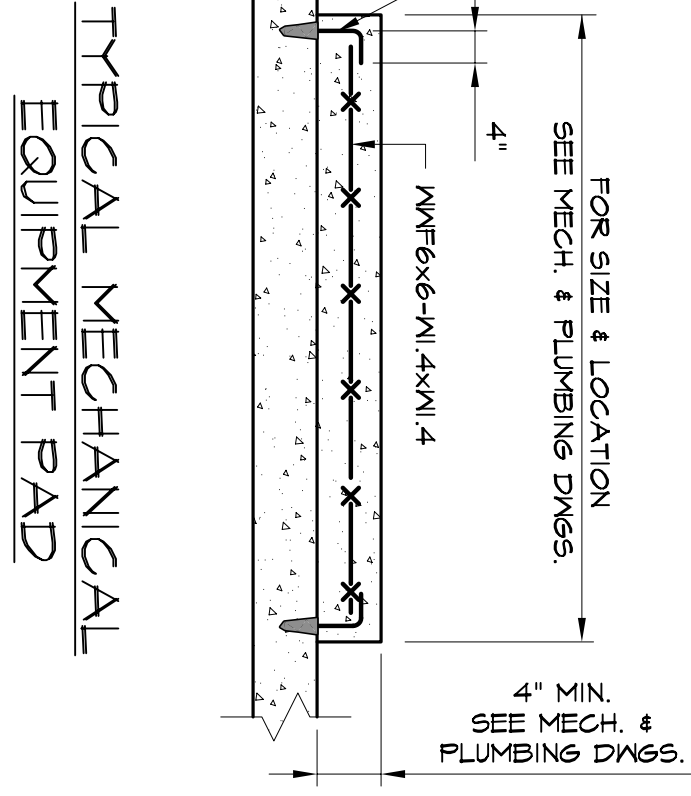
BAR SIZE	LAP LENGTH
#4	24"
#5	30"
#6	36"
#7	42"
#8	48"



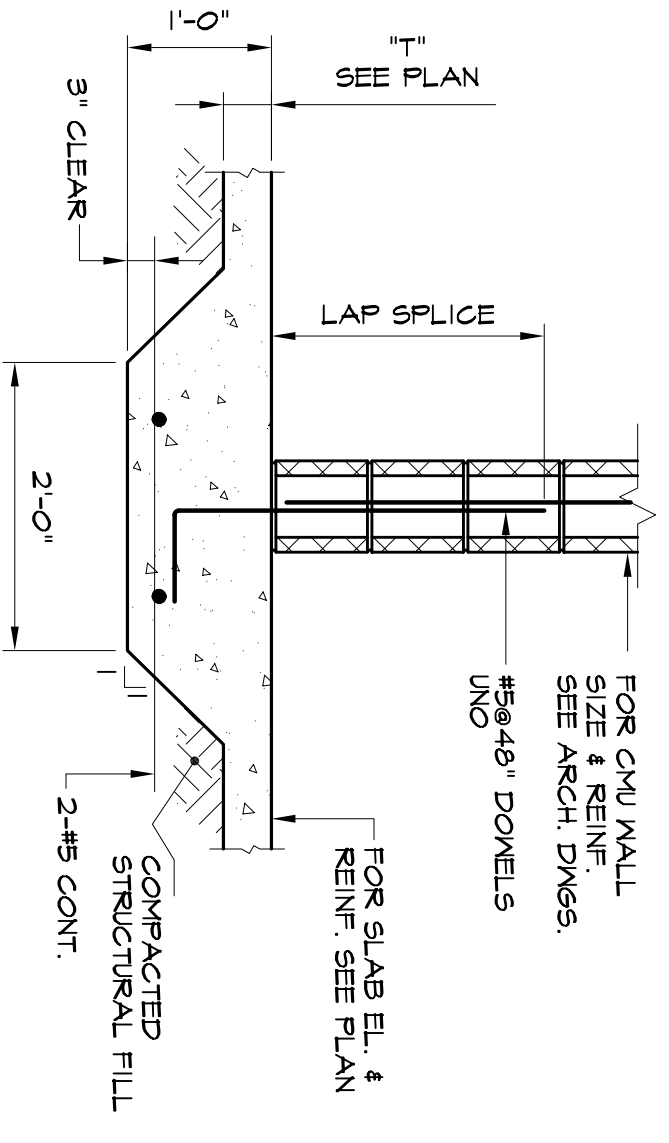
NOTE:
 1. PROVIDE LADDER TYPE HORIZONTAL REINFORCING AT 16" O.C.
 2. FOR HORIZONTAL BOND BEAMS & ELEVATIONS, SEE GROUTING DETAILS, PLANS & SECTIONS.



CONTINUOUS STEPPED WALL FOOTING



TYPICAL MECHANICAL EQUIPMENT PAD



CONTINUOUS FOOTING FOR NON-BEARING WALLS

TYPICAL LOW LIFT GROUTING DETAIL

VEITAS ENGINEERS

630 Granite Street, Suite 101
 Portland, ME 04104
 TEL: (754) 2583 FAX: (754) 2015

<p>S2.2</p>	<p>TYPICAL DETAILS</p>	<p>Date: JULY 12, 2005</p>	<p>Scale: N.T.S.</p>	<p>ARCHETYPE, P.A. ARCHITECTS</p> <p>48 Union Wharf Portland, Maine 04101 (207) 772-6022 Fax (207) 772-4056</p>	<p>CONTRACTOR:</p>	<p>OWNER: MAINE WORKFORCE HOUSING, LLC</p> <p>One Longfellow Square, Portland, Maine 04101 (207) 871-9811 Fax (207) 761-0155</p>
	<p>Project: WALKER TERRACE</p> <p>ONE WALKER STREET PORTLAND, MAINE</p>	<p>Revisions: SUBMISSION JULY 12, 2005</p>	<p>Checked By:</p>			