

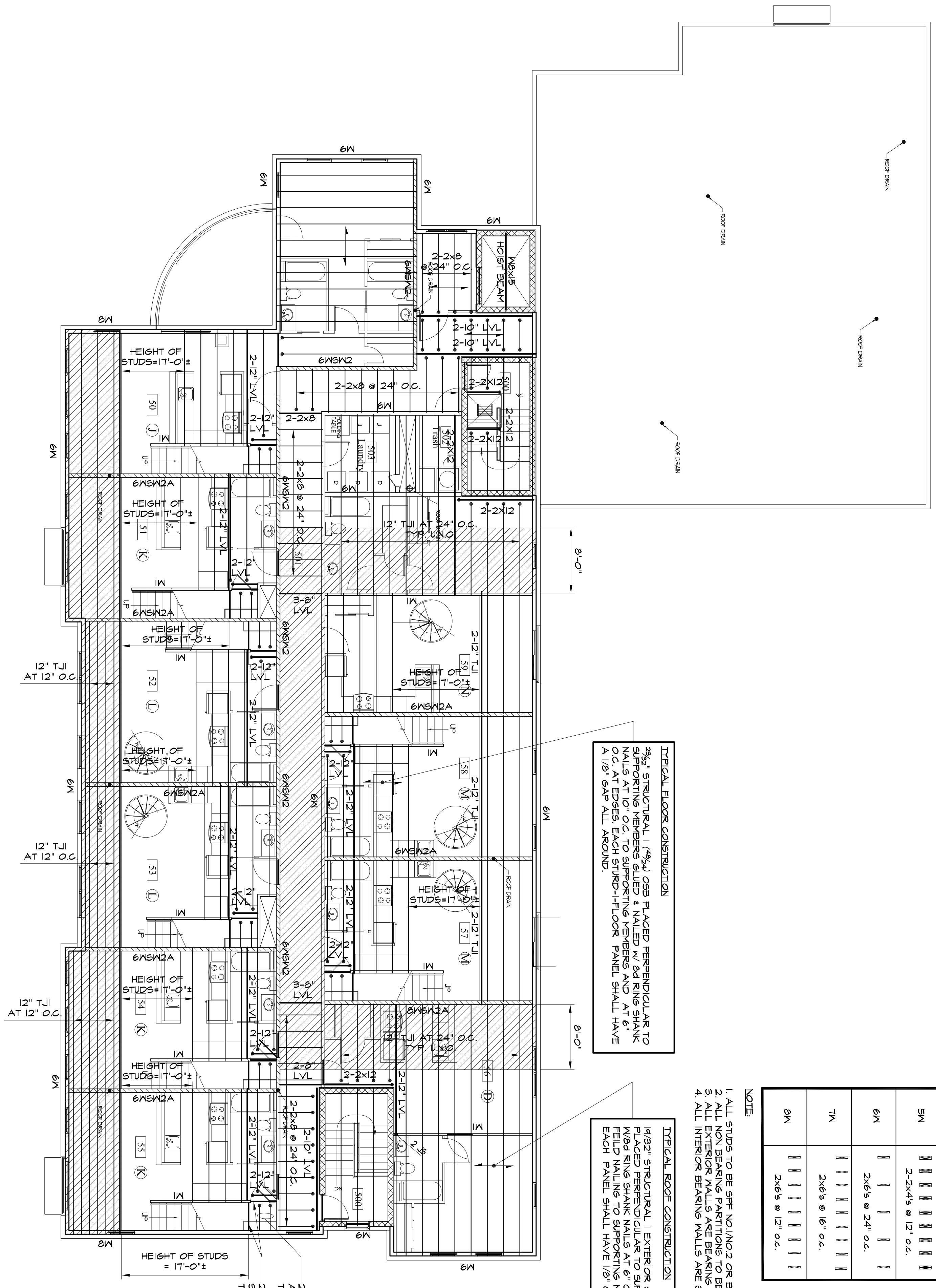
FLOOR JOIST DESIGN LOAD SCHEDULE	
ROOF	DL = 20 psf SN = 35 psf
HATCHED ROOF	DL = 17 psf SN + SN DRIFT = 80 psf
MEZZANINE AND ROOMS	DL = 25 psf LL = 40 psf
CORRIDORS	DL = 20 psf SN = 40 psf

BEARING WALL SCHEDULE (UNO)	
1M	2x4s @ 24" o.c.
2M	2x4s @ 24" o.c. # 2x4s @ 48" o.c.
3M	2x4s @ 12" o.c.
4M	2x4s @ 12" o.c. + 1 # 2x4s @ 24" o.c.
5M	2-2x4s @ 12" o.c.
6M	2x6s @ 24" o.c.
7M	2x6s @ 16" o.c.
8M	2x6s @ 12" o.c.

- NOTE:
1. ALL STUDS TO BE SPF NO.1/NO.2 OR BETTER.
 2. ALL NON BEARING PARTITIONS TO BE 2x4s @ 24" o.c.
 3. ALL INTERIOR BEARING WALLS ARE 3M UNLESS NOTED ON PLAN.
 4. ALL INTERIOR BEARING WALLS ARE 3M UNLESS NOTED ON PLAN.

TYPICAL FLOOR CONSTRUCTION
 2x6 STRUCTURAL I JOIST ORB PLACED PERPENDICULAR TO SUPPORTING MEMBERS NAILED & NAILER w/ 6d RING SHANK NAILS AT 10" O.C. TO SUPPORTING MEMBERS AND AT 6" O.C. AT EDGES EACH STUD-FLOOR PANEL SHALL HAVE A 1/8" GAP ALL AROUND.

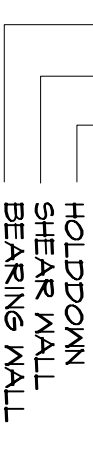
TYPICAL ROOF CONSTRUCTION
 2x6 STRUCTURAL I JOIST ORB PLACED PERPENDICULAR TO SUPPORTING MEMBERS NAILED & NAILER w/ 6d RING SHANK NAILS AT 10" O.C. TO SUPPORTING MEMBERS AND AT 6" O.C. AT EDGES EACH STUD-FLOOR PANEL SHALL HAVE A 1/8" GAP ALL AROUND.



MEZZANINE FLOOR FRAMING PLAN
 SCALE: 1/8"=1'-0"

FLOOR FRAMING NOTES:

1. FOR TYPICAL DETAILS SEE DRAWING S11
2. FOR FLOOR HEIGHT, SEE ARCHITECTURAL DRAWINGS.
3. GENERAL CONTRACTOR NOTE: REFER TO ROOF AND FLOOR PLANS FOR LOCATIONS OF POSTS AND JACK STUDS. POSTS AND JACK STUDS SHALL BE SPACED FROM CORNER POSTS TO JACK FOUNDATION JACK STUD AND POST LOCATIONS PROVIDE MATCHING BLOCKING STUDS BELOW FIRST FLOOR SHEATHING DOWN TO FOUNDATION WALL OR LVL BEAMS.
4. FRAMING SUPPLIER SHALL SUBMIT TRUSS, WOOD I-JOIST AND LVL HANGER INFORMATION FOR APPROVAL.
5. X-6" LVL INDICATES THE NUMBER OF 1 3/4" x 5 1/2" LVL'S.
6. X-8" LVL INDICATES THE NUMBER OF 1 3/4" x 7 1/2" LVL'S.
7. X-10" LVL INDICATES THE NUMBER OF 1 3/4" x 9 1/2" LVL'S.
8. X-12" LVL INDICATES THE NUMBER OF 1 3/4" x 11 1/2" LVL'S.
9. X-14" LVL INDICATES THE NUMBER OF 1 3/4" x 13 1/2" LVL'S.
10. X-16" LVL INDICATES THE NUMBER OF 1 3/4" x 15 1/2" LVL'S.
11. 'RT' INDICATES GIRDER TRUSS.
12. 'RS+' INDICATES GIRDER LOAD.
13. 'K5' INDICATES THE NUMBER OF FULL HEIGHT KING STUDS.
14. 'K5P' INDICATES THE NUMBER OF JACK STUDS.
15. 'XKXK' INDICATES PARALLEL POST SEE PLAN.
16. 'X' INDICATES TOP CHORD BEARING TRUSSES.
17. 'T' INDICATES FLUSH FRAMING WITH HANGERS OR TOP CHORD BEARING FLUSH FRAMING.
18. 'T' INDICATES TRUSSES/JOISTS CONTIGUOUS OVER WALLS/TRUSSES.
19. 'XKX' INDICATES POINT LOAD ON WOOD TRUSSES OR GIRDER TRUSSES.
20. ALL HEADERS IN 2x4 WALLS SHALL BE 2-2x10 UNLESS NOTED OTHERWISE.
21. PROVIDE JACK STUD AT END OF EACH OPENING AND UNDER CONCENTRATED LOAD UNLESS NOTED OTHERWISE.
22. INDICATES 2x... BEARING WALLS BELOW SEE BEARING WALL SCHEDULE FOR SIZE & SPACING OF WALL STUDS.
23. AT ALL INTERIOR LOAD BEARING WALLS AND ALL NON-LOAD BEARING WALLS OVER 8'-0" IN HEIGHT, PROVIDE ONE R2M OR WOOD BLOCKING AT MID-HEIGHT OF STUDS.
24. 'SK...' SHEAR WALL OR ... INDICATES SHEAR WALL.
25. FOR SHEAR WALL ELEVATIONS AND DETAILS, SEE DRAWING S45 & S46.
26. SHEAR WALL ANCHORS SHALL BE PROVIDED AT THE ENDS OF EACH ALL FLOOR LEVELS AND MUST TERMINATE AT FOUNDATIONS THROUGH ALUMINUM REINFORCEMENT. SEE SHEAR WALL ELEVATION.
27. FOR PIPES HANG BELOW CORRIDORS, ATTACH PIPE HANGERS AT MIDPOINT OF JOISTS.
28. SEE LOAD SCHEDULE FOR FLOOR JOISTS DESIGN LOADS.
29. TRUSS SUPPLIER TO COORDINATE LOCATION AND SIZE OF MECHANICAL CHASIS WITH MEP DRAWINGS.
30. PROVIDE POST CAPS AT ALL POST COLUMNS TO SECURE POSTS TO GIRDER TRUSSES OR LVL'S.
31. WHERE TRUSSES FALLS DIRECTLY BELOW WATER CLOSET, MOVE TRUSSES 6" AND ADD AN ADDITIONAL TRUSSES TYPICAL.
32. 'M SN1' INDICATES BEARING/SHEAR WALL TYPE. SEE SCHEDULE ON DWS S45



S1.6 MEZZANINE FLOOR PLAN Project: WALKER TERRACE ONE WALKER STREET PORTLAND, MAINE	Date: JULY 12, 2005 Revisions: SUBMISSION JULY 12, 2005 Scale: 1/8" = 1'-0"	ARCHETYPE, P.A. ARCHITECTS 48 Union Wharf Portland, Maine 04101 (207) 772-6022 Fax (207) 772-4056	CONTRACTOR:	OWNER: MAINE WORKFORCE HOUSING, LLC One Longfellow Square, Portland, Maine 04101 (207) 871-9811 Fax (207) 761-0155
--------------------------------------------------------------------------------------------------------	-----------------------------------------------------------------------------------	------------------------------------------------------------------------------------------------------------	-------------	-----------------------------------------------------------------------------------------------------------------------------