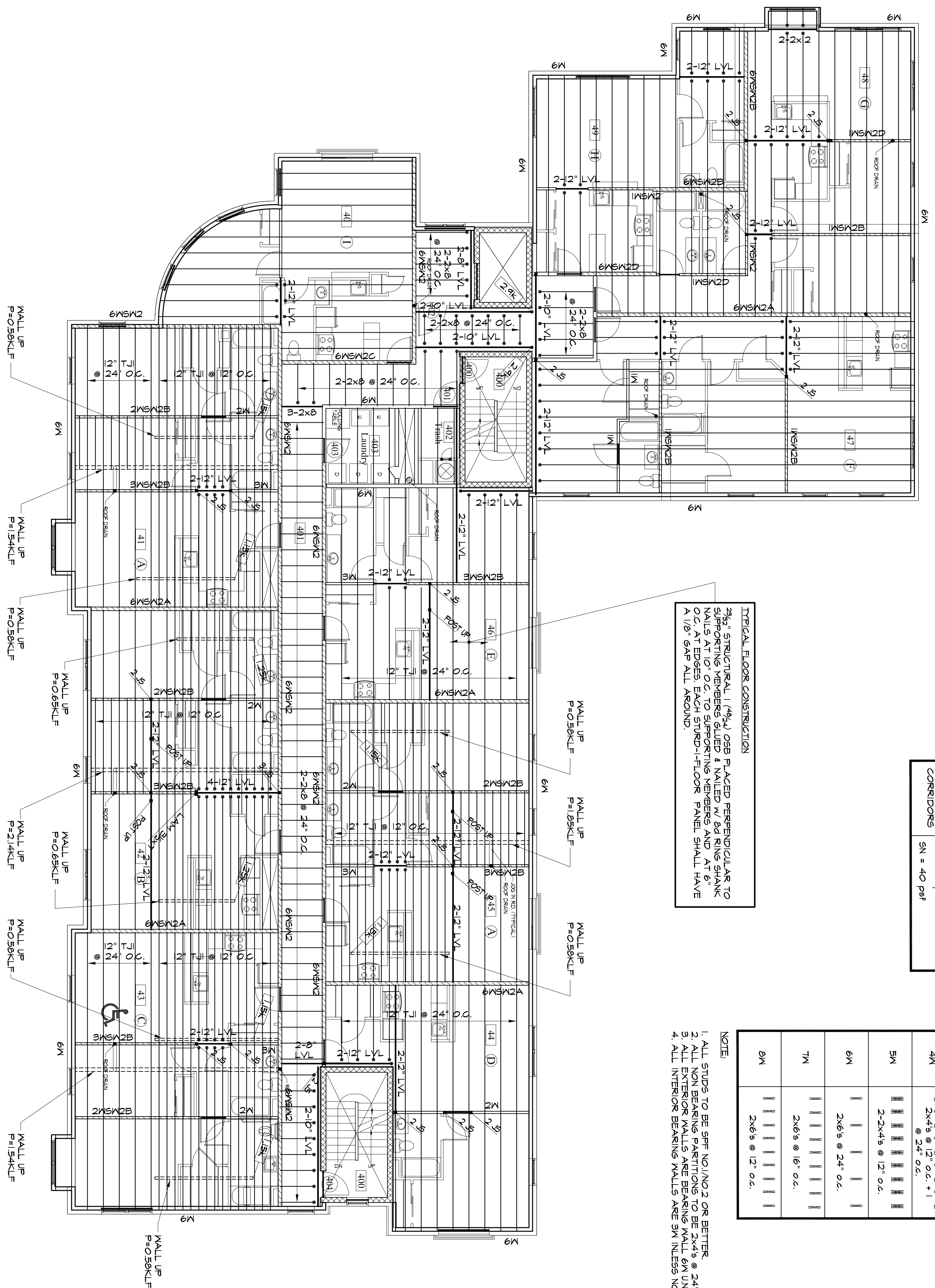
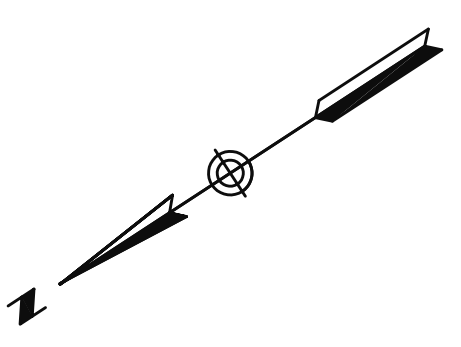


FLOOR JOIST DESIGN LOAD SCHEDULE	
ROOF	DL = 20 psf SN = 95 psf
HATCHED ROOF	DL = 17 psf SN + SN DRIFT = 80 psf
MEZZANINE AND ROOMS	DL = 28 psf LL = 40 psf
CORRIDORS	DL = 20 psf SN = 40 psf

BEARING WALL SCHEDULE (UNO)	
1M	2x4s @ 24" o.c.
2M	2x4s @ 24" o.c. + 2x4s @ 48" o.c.
3M	2x4s @ 12" o.c.
4M	2x4s @ 12" o.c. + 1 @ 24" o.c.
5M	2-2x4s @ 12" o.c.
6M	2x6s @ 24" o.c.
7M	2x6s @ 16" o.c.
8M	2x6s @ 12" o.c.

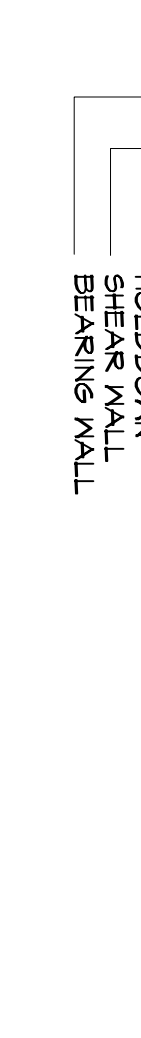
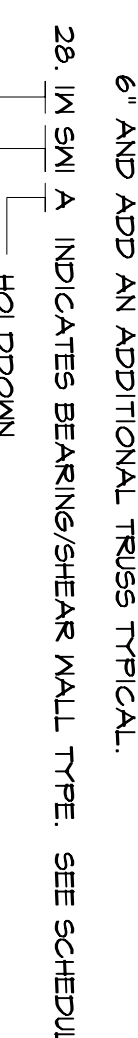
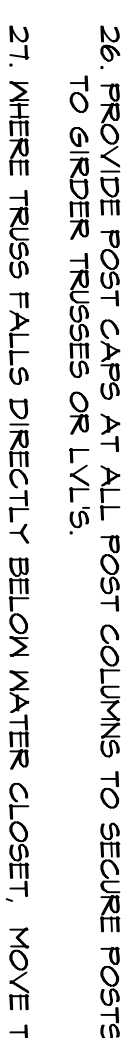
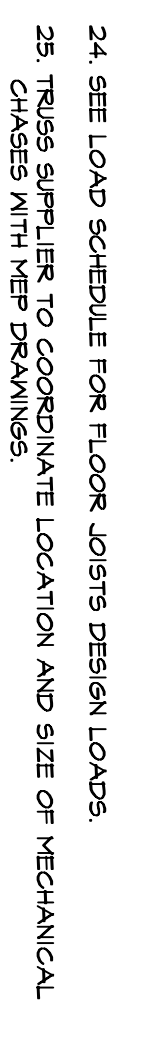
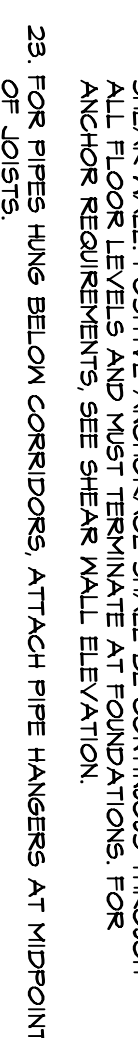
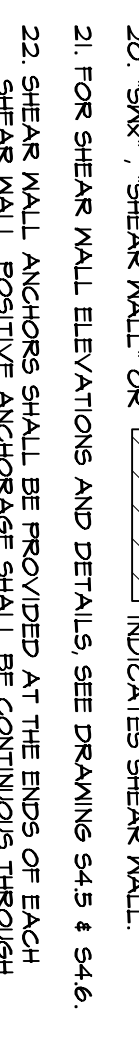
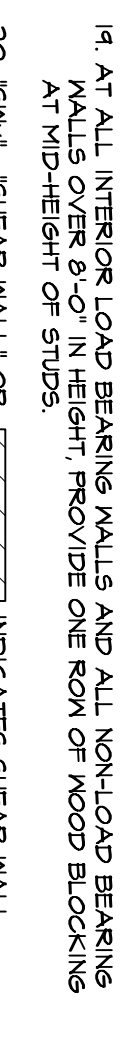
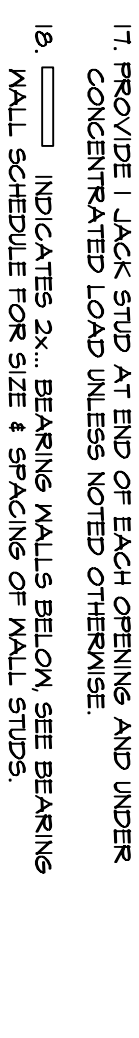
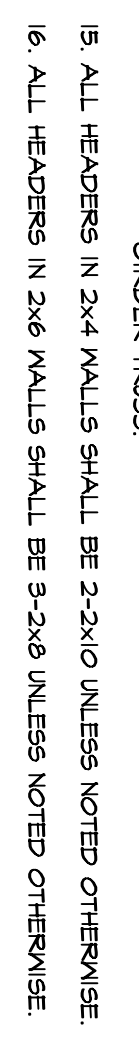
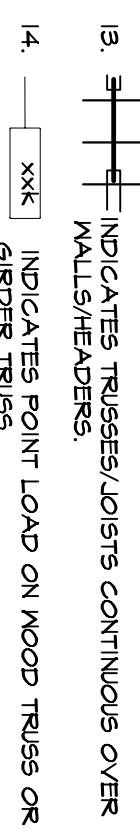
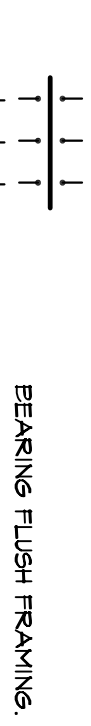
TYPICAL FLOOR CONSTRUCTION  
2% STRUCTURAL (4%) OSB PLACED PERPENDICULAR TO SUPPORTING MEMBERS SIZED & NAILLED UP TO RING SHANK NAILS AT 6" O.C. TO SUPPORTING MEMBERS AND AT 6" A 1/8" GAP ALL AROUND.

- NOTE:
1. ALL STUDS TO BE SPT NO.1/NO.2 OR BETTER.
  2. ALL NON BEARING PARTITIONS TO BE 2x4s @ 24" o.c.
  3. ALL EXTERIOR WALLS ARE BEARING WALL 6M UNO ON PLAN.
  4. ALL INTERIOR BEARING WALLS ARE 3M UNLESS NOTED ON PLAN.



FIFTH FLOOR FRAMING PLAN  
SCALE: 1/8"=1'-0"

- FLOOR FRAMING NOTES:
1. FOR TYPICAL DETAILS AND GENERAL NOTES SEE DRAWING S11
  2. FOR PLATE HEIGHT, SEE ARCHITECTURAL DRAWINGS.
  3. GENERAL CONTRACTOR NOTE: REFER TO ROOF AND FLOOR PLANS FOR LOCATIONS OF POSTS AND JACK STUDS. POSTS AND JACK WALLS MUST BE INTERMEDIATE TO A BEAM OR JACK STUD. ALL JACK STUD AND POST LOCATIONS PROVIDE WATCHING BLOCKING STUDS BELOW FIRST FLOOR SHEATHING DOWN TO FOUNDATION WALL OR LVL BEAMS.
  4. FRAMING SUPPLIER SHALL SUBMIT TRUSS, WOOD I-JOIST AND LVL HANDBOOK INFORMATION FOR APPROVAL.
  5. X-6' LVL INDICATES THE NUMBER OF 1/2" x 5 1/2" LVL'S.
  6. X-8' LVL INDICATES THE NUMBER OF 1/2" x 7 1/2" LVL'S.
  7. X-10' LVL INDICATES THE NUMBER OF 1/2" x 9 1/2" LVL'S.
  8. X-12' LVL INDICATES THE NUMBER OF 1/2" x 11 1/2" LVL'S.
  9. X-14' LVL INDICATES THE NUMBER OF 1/2" x 13 1/2" LVL'S.
  10. X-16' LVL INDICATES THE NUMBER OF 1/2" x 15 1/2" LVL'S.
  11. 'RT' INDICATES GIRDER TRUSS.
  12. 'K5' INDICATES HANDBOOK LOAD.
  13. 'K6' INDICATES THE NUMBER OF FULL I



**VEITAS ENGINEERS**  
639 Granite Street, Suite 101  
Portland, ME 04103  
TEL: (207) 754-2583 FAX: (207) 754-2075

**S1.5**

<b>FIFTH FLOOR PLAN</b> Date: JULY 12, 2005 Scale: 1/8" = 1'-0" Revisions: SUBMISSION JULY 12, 2005 Checked By:		<b>ARCHETYPE, P.A. ARCHITECTS</b> 48 Union Wharf Portland, Maine 04101 (207) 772-6022 Fax (207) 772-4056	<b>CONTRACTOR:</b>	<b>OWNER:</b> <b>MAINE WORKFORCE HOUSING, LLC</b> One Longfellow Square, Portland, Maine 04101 (207) 871-9811 Fax (207) 761-0155
<b>Project:</b> <b>WALKER TERRACE</b> ONE WALKER STREET PORTLAND, MAINE				