

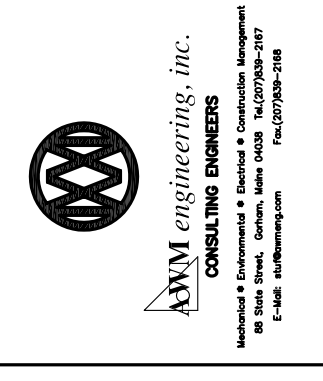
WALKER TERRACE
PLUMBING
GROUND FLOOR
PLAN

Date:	7-12-05
Scale:	AS NOTED
Drawn By:	SJM
Checked By:	AWM
Revisions:	

ARCHETYPE, P.A.
ARCHITECTS
48 Union Wharf Portland, Maine 04101
(207) 772-6022 Fax (207) 772-4056

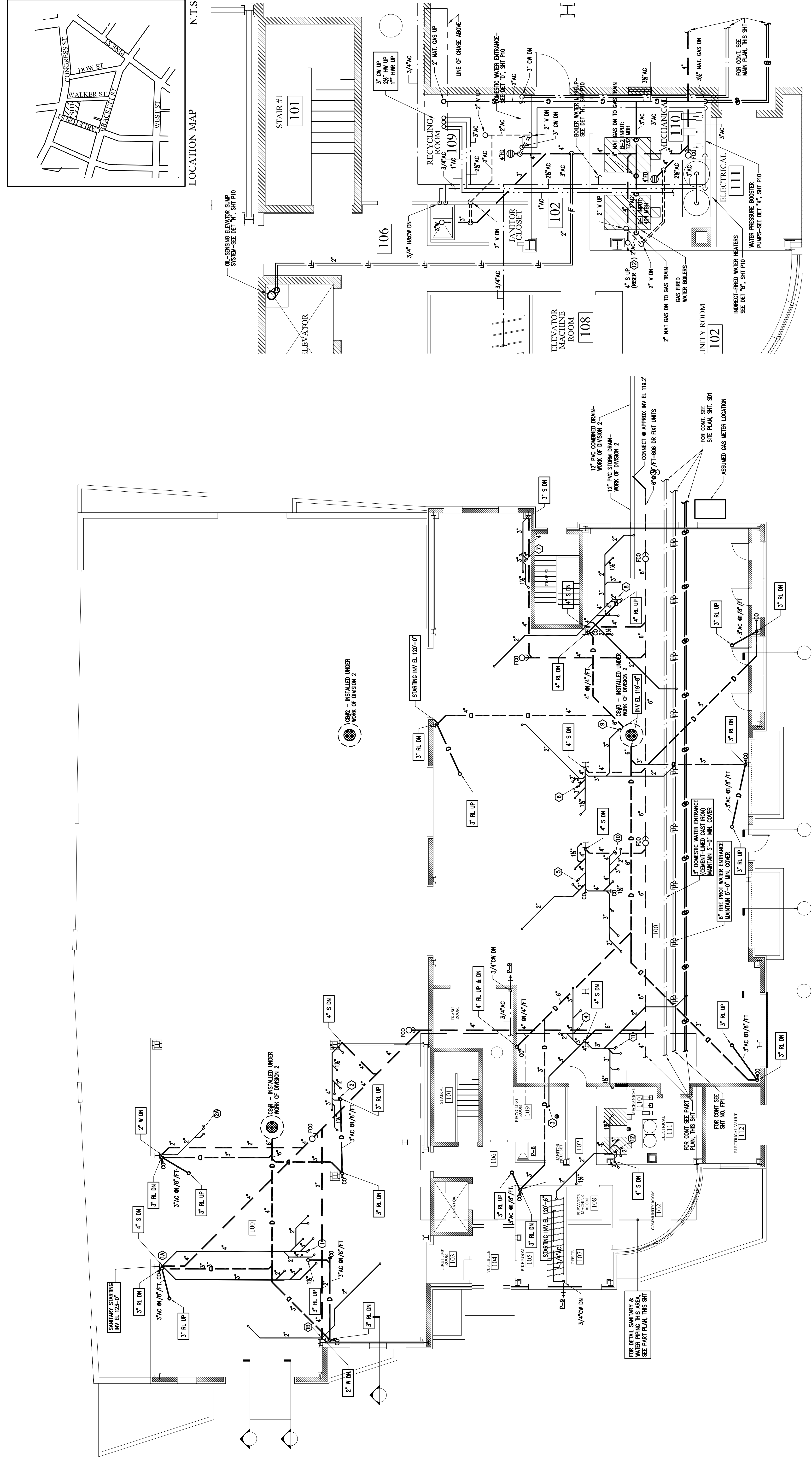
Project:
WALKER TERRACE
Walker Street,
Portland, Maine 04101

Owner:
MAINE WORKFORCE HOUSING, LLC
One Longfellow Square, Portland, Maine 04101
(207) 871-9811 Fax (207) 761-0155



PARTIAL GROUND FLOOR PLUMBING PLAN
SCALE: 1/4" = 1'-0"

GROUND FLOOR PLUMBING PLAN
SCALE: 1/8" = 1'-0"



DRAWING NOTES:
ALL ABOVE GROUND SANITARY PIPING SHOWING CONNECTING TO SANITARY DROPS AT COLUMNS SECOND FLOOR FIXTURES AND IS LOCATED ABOVE SUSPENDED CEILING, BETWEEN BEAMS. ALL SUCH PIPING SHALL BE INSULATED.
ALL SANITARY & STORM DRAIN DROPS AT COLUMNS SHALL BE INSULATED. ALL SUCH INSULATION SHALL BE WRAPPED & PROTECTED BY A METAL COVERING.
ALL SANITARY DROPS AT COLUMNS SHALL BE PROTECTED AGAINST FREEZING WITH INTERNAL HEAT TAPE. SEE DETAIL "X" ON SHT PX.

