

Owner: MAINE WORKFORCE HOUSING, LLC  
 One Longfellow Square, Portland, Maine 04101  
 (207) 871-9811 Fax (207) 761-0155

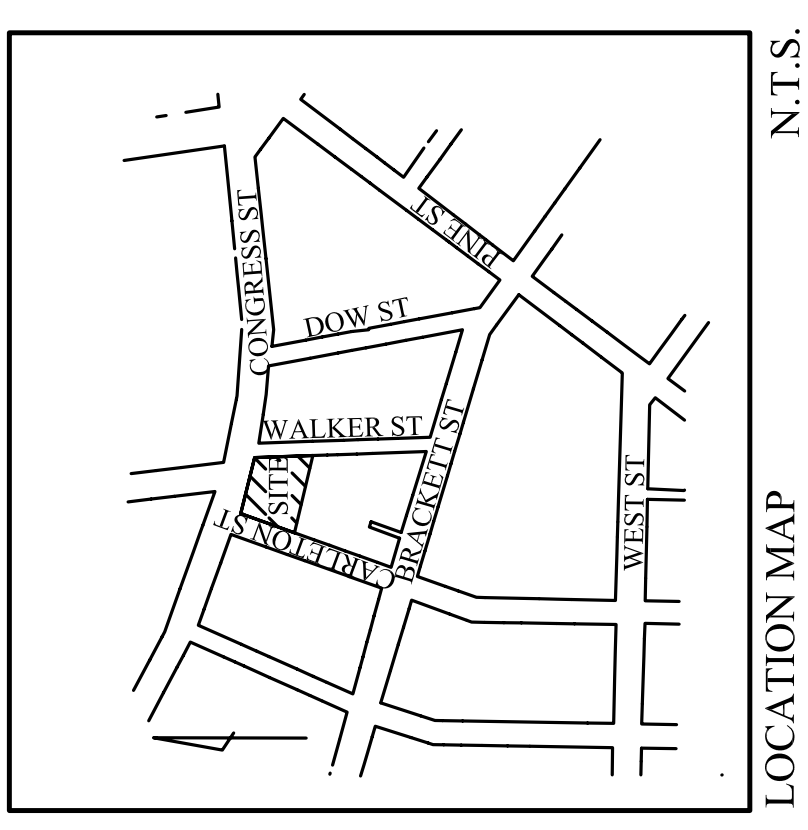
Project: WALKER TERRACE  
 Walker Street,  
 Portland, Maine 04101

ARCHITECTS: ARCHETYPE, P.A.  
 48 Union Wharf Portland, Maine 04101  
 (207) 772-6022 Fax (207) 772-4056

Date: 7-12-05  
 Drawn By: CLC  
 Revisions: (2)  
 Scale: AS NOTED  
 Checked By: AWM

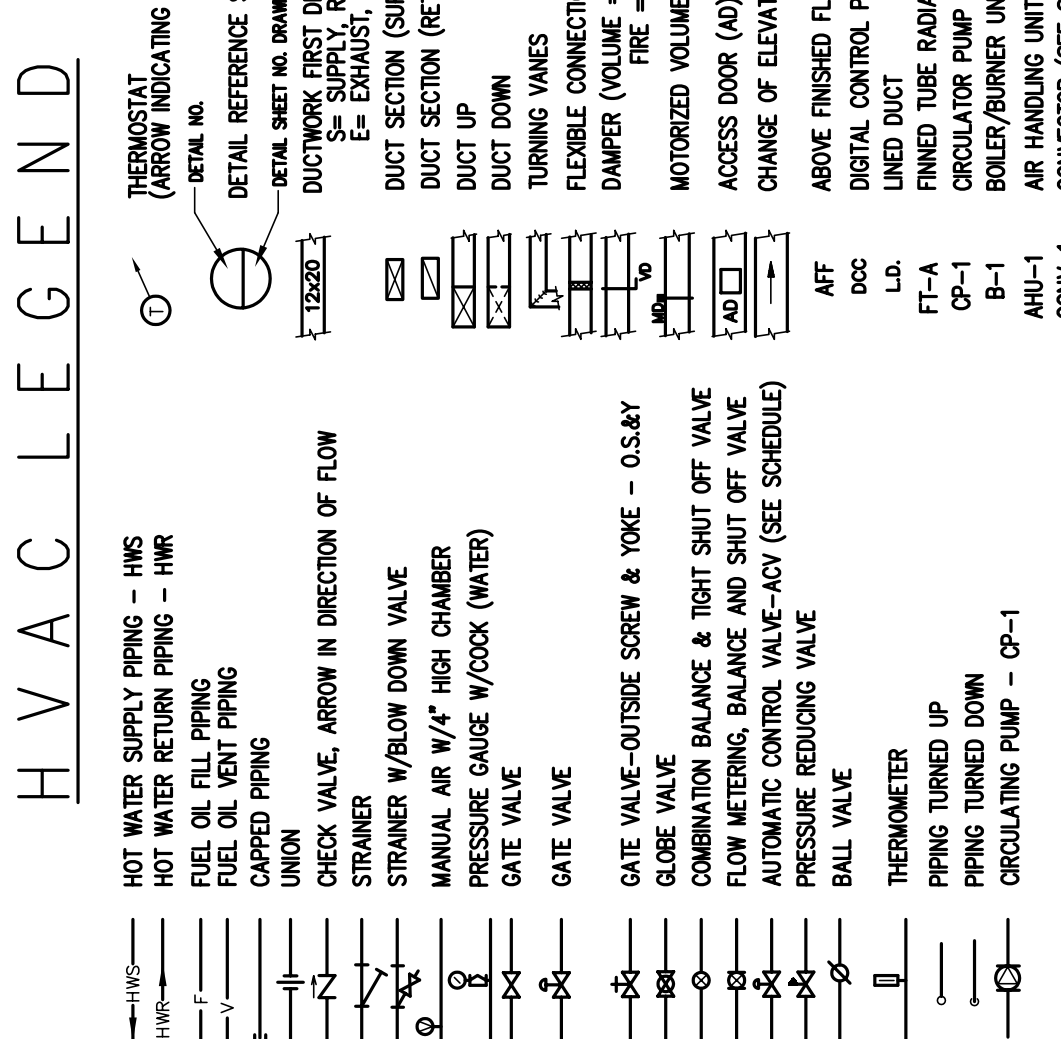
MECHANICAL LEGEND, NOTES AND SCHEDULES  
 WALKER TERRACE

FOR SUBMISSION 7-12-05



**GENERAL NOTES**

- ALL PIPING SHOWN DIAGRAMMATICALLY. EXACT LOCATIONS TO BE DETERMINED IN THE FIELD.
- COORDINATE ALL WORK WITH THE OWNER.
- FIELD VERIFY EXISTING CONDITIONS AND LOCATION OF EQUIPMENT IN THE WORK AREAS FROM THE EXISTING AS-BUILT DRAWINGS. VERIFY ALL DIMENSIONS, OFFSETS, ETC. AS REQUIRED TO AVOID ALL NEW AND EXISTING LIGHTING, WIRING, STRUCTURE, PIPING, ETC.
- ALL ITEMS ARE NEW UNLESS LABELED OR INDICATED AS EXISTING.
- ALL OPENINGS IN WALLS, FLOORS AND CEILINGS RESULTING FROM THE INSTALLATION OF NEW EQUIPMENT ARE TO BE PATCHED TO MATCH THE FINISHED SURFACE.
- ALL ROOM TEMPERATURE SENSORS SHALL BE LOCATED A MINIMUM OF 12" HORIZONTALLY AWAY FROM ROOM DIMMER SWITCHES. TEMPERATURE SENSORS SHALL BE MOUNTED 54" ABOVE FINISH FLOOR.
- ALL ROOM TEMPERATURE SENSORS SHALL BE LOCATED A MINIMUM OF 12" HORIZONTALLY AWAY FROM ROOM DIMMER SWITCHES. TEMPERATURE SENSORS SHALL BE MOUNTED 54" ABOVE FINISH FLOOR.
- KEY TAGS SHALL BE ALLOWED IN LIEU OF OFFER PIPING FOR 3/4" AND BELOW ONLY. CONNECTIONS SHALL BE MADE IN WALLS OR ABOVE OYFSUM BOARD CEILINGS.



**CONVECTOR SCHEDULE**

UNIT	SERVICES	CPM	BAT	EWI	GPM	TYPE	MANUP.-MODEL	DIMENSIONS LxHxD	ELEMENT	RECESS DEPTH	ACV#
CONV-1	100 STAR #1	0.13	85F	180F	-	PARTIALLY RECESSED	STERLING PWC-A418	20x4 1/4x18	CU	2"	-
CONV-2	300 STAR #2	02.8	85F	180F	-	PARTIALLY RECESSED	STERLING PWC-A418	36x4 1/4x18	CU	2"	-
CONV-3	200 STAR #2	02.8	85F	180F	-	PARTIALLY RECESSED	STERLING PWC-A418	36x4 1/4x18	CU	2"	-
CONV-4	400 STAR #2	02.8	85F	180F	-	PARTIALLY RECESSED	STERLING PWC-A418	36x4 1/4x18	CU	2"	-
CONV-5	500 STAR #1	0.19	85F	180F	-	PARTIALLY RECESSED	STERLING PWC-A418	28x4 1/4x18	CU	2"	-
CONV-6	500 STAR #2	0.28	85F	180F	-	PARTIALLY RECESSED	STERLING PWC-A418	40x4 1/4x18	CU	2"	-

**UNIT HEATER SCHEDULE**

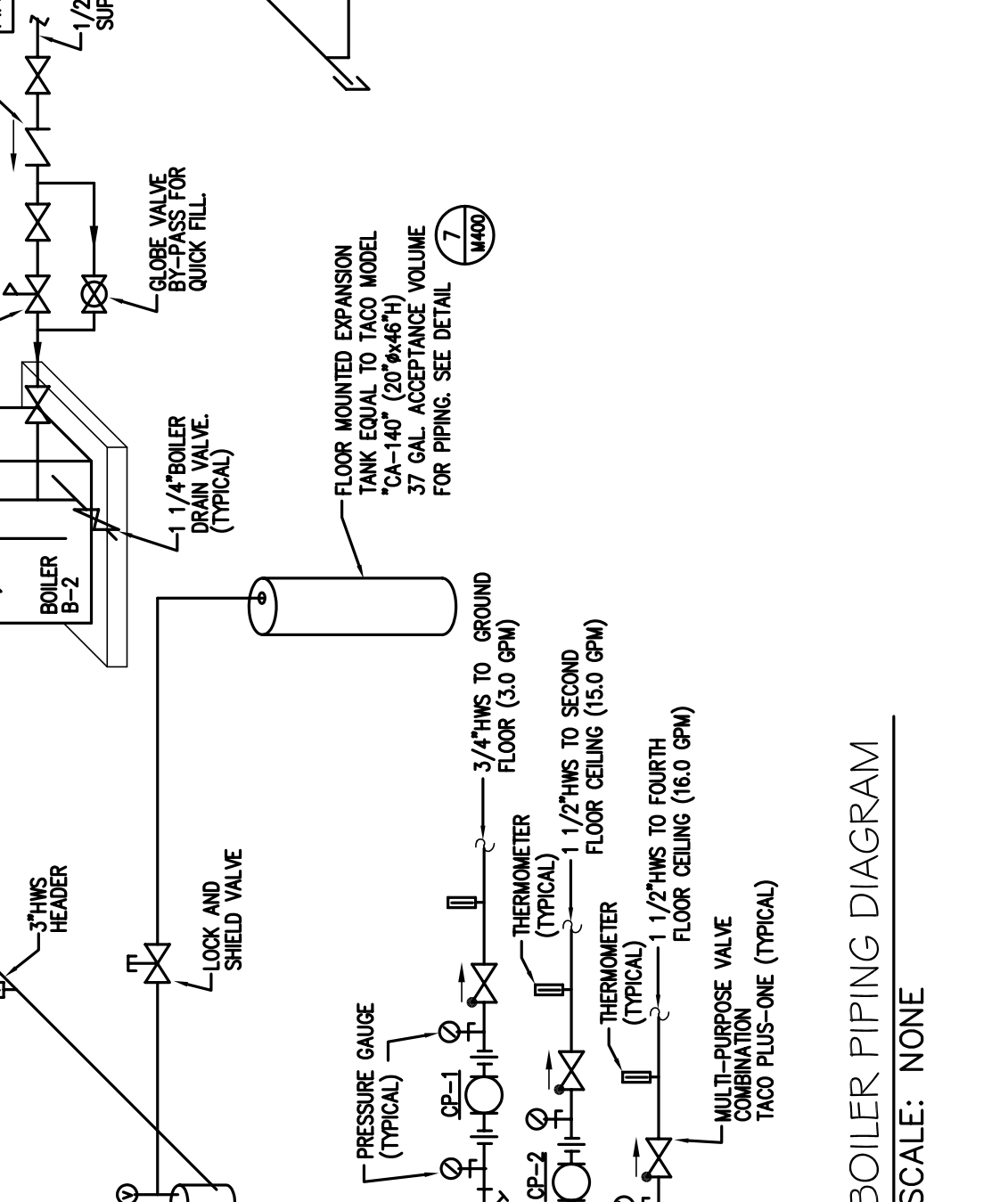
UNIT	SERVICES	CPM	MBH	EWI	GPM	MOTOR RPM	HP	VOLTS	PHASE	TYPE	MANUP.-MODEL	ACV#
UH-1	BIKE ROOM 05	210	5.8	180F	0.8	1350	9	WATS	115	1	HORIZONTAL STERLING-HS-108A	-
UH-2	RECYCLE/TRASH 109	420	13.3	180F	1.9	1350	9	WATS	115	1	HORIZONTAL STERLING-HS-118A	-
UH-3	MECHANICAL 110	210	5.8	180F	0.8	1350	9	WATS	115	1	HORIZONTAL STERLING-HS-108A	-
UH-4	ELECTRICAL 111	210	5.8	180F	0.8	1350	9	WATS	115	1	HORIZONTAL STERLING-HS-108A	-

**BOILER / BURNER UNIT SCHEDULE**

UNIT	ASME RELIEF VALVE SETTING	NAT. GAS INPUT	MBH	OUTPUT	MBH	BURNER MANUP.-MODEL	FUEL TYPE	H.P.P.	VOLTS	PHASE	MANUP.-MODEL
B-1	30 PSI	404	279	-	-	POWER FLAME-AR19A-10	NATURAL GAS	1/4	120	1	DE DETRICH G208A
B-2	30 PSI	1232	861	-	-	POWER FLAME-AR19A-15	NATURAL GAS	1/4	120	1	DE DETRICH G208A

**LOUVER SCHEDULE**

UNIT	SERVICES	TYPE	SIZE WxH	NET FREE AREA (F2)	MAX WIND SPEED (FPM)	MANUP.-MODEL	OPTIONS
L-1	BOILER ROOM	INTAKE	24x40	2.84	-	CES00-SL34-B-45	INSECT SCREEN



**AIR HANDLING UNIT SCHEDULE**

UNIT	MANUP. - MODEL	SERVICES	CFM	S.P.	FAN SECTION			GAS HEATING SECTION								
					EXT S.P.	RPM	HP	MBH INPUT	MBH OUTPUT	ΔT	BAT	LAT	GAS PRES.	CONTROL	FILTER TYPE	
AHU-1	FRANE-GFCAL3PDDH06G802A0CP	EAST CORRIDORS	3085	0.6" WG	720	3/4	208	3	350	278	NATURAL	91"	---	3.5" WG	MODULATING	WASHABLE
AHU-2	FRANE-GFCAL3PDDH06G802A0CP	WEST CORRIDORS	2400	0.6" WG	835	3/4	208	3	300	237	NATURAL	91"	---	3.5" WG	MODULATING	WASHABLE

**FAN SCHEDULE**

UNIT	SERVICES	CFM	S.P.	DRIVE	MAX RPM	MIN HP	VOLTS	PHASE	MOTOR MANUP.-MODEL	DAMPER CONTROL	CYCLE ACCESSORIES
EF-1	LAUNDRY/TRASH ROOMS	1060	4.0	0.2	658	0.167	120	1	COOK-150 AGRIB	MOTORIZED	CONTINUOUS
EF-2	TOILET STACK WEST	3300	7.4	0.2	622	0.334	120	1	COOK-210 AGRIB	MOTORIZED	-
EF-3	GARAGE EXHAUST	6500	10.1	0.128	415	1/2	120	1	COOK-30AP	MOTORIZED	CO DETECTION
EF-4	TOILETS (62 TYPICAL)	75	0.8	0.1	900	19	WATS	120	PANASONIC-PV-D7W1	BACK DRIFT LOCAL SWITCH	-
ASF-1	CEILING FANS	12500	N/A	N/A	DIRECT	395	75	WATS	LEADING EDGE 36201	N/A	VARIABLE SPEED

**CABINET UNIT HEATER SCHEDULE**

UNIT	TYPE	SERVICES	DIMENSIONS L x D x H	RECESS DEPTH	CFM	BAT	EWI	GPM	MAX WATER ΔT	MOTOR AMPS	VOLTS	PHASE	MANUP.-MODEL	ACV#
CUH-1	FREE STANDING STAR #2	25x8	7/8x24	-	170	65	11.7	180F	1.0	-	-	-	STERLING FP-130	-
CUH-2	FREE STANDING WEST 104	25x8	7/8x24	-	170	65	11.7	180F	1.0	-	-	-	STERLING FP-130	-
CUH-3	FREE STANDING DOOR 100	25x8	7/8x24	-	170	65	11.7	180F	1.0	-	-	-	STERLING FP-130	-
CUH-4	FREE STANDING DOOR 112	25x8	7/8x24	-	170	65	11.7	180F	1.0	-	-	-	STERLING FP-130	-

**AUTOMATIC CONTROL VALVE SCHEDULE**

UNIT	TYPE	MIN VALVE SIZE (CV)	PIPE SIZE (HRS & HHR)	CONTROL CYCLE	SERVICES	MIN VALVE SIZE (CV)	PIPE SIZE (HRS & HHR)	CONTROL CYCLE
ACV-11	C	1.0	1/2"	---	---	1.0	1/2"	---
ACV-12	C	1.0	1/2"	---	---	1.0	1/2"	---
ACV-13	C	1.0	1/2"	---	---	1.0	1/2"	---
ACV-14	C	1.0	1/2"	---	---	1.0	1/2"	---
ACV-21	C	1.0	1/2"	---	---	1.0	1/2"	---
ACV-22	C	1.0	1/2"	---	---	1.0	1/2"	---
ACV-23	C	1.0	1/2"	---	---	1.0	1/2"	---
ACV-24	C	1.0	1/2"	---	---	1.0	1/2"	---
ACV-25	C	1.0	1/2"	---	---	1.0	1/2"	---
ACV-26	C	1.0	1/2"	---	---	1.0	1/2"	---
ACV-27	C	1.0	1/2"	---	---	1.0	1/2"	---
ACV-28	C	1.0	1/2"	---	---	1.0	1/2"	---
ACV-29	C	1.0	1/2"	---	---	1.0	1/2"	---
ACV-30	C	1.0	1/2"	---	---	1.0	1/2"	---
ACV-31	C	1.0	1/2"	---	---	1.0	1/2"	---
ACV-41	C	1.0	1/2"	---	---	1.0	1/2"	---
ACV-42	C	1.0	1/2"	---	---	1.0	1/2"	---
ACV-43	C	1.0	1/2"	---	---	1.0	1/2"	---
ACV-44	C	1.0	1/2"	---	---	1.0	1/2"	---
ACV-45	C	1.0	1/2"	---	---	1.0	1/2"	---
ACV-46	C	1.0	1/2"	---	---	1.0	1/2"	---
ACV-47	C	1.0	1/2"	---	---	1.0	1/2"	---
ACV-48	C	1.0	1/2"	---	---	1.0	1/2"	---
ACV-49	C	1.0	1/2"	---	---	1.0	1/2"	---
ACV-50	C	1.0	1/2"	---	---	1.0	1/2"	---
ACV-51	C	1.0	1/2"	---	---	1.0	1/2"	---

**GRILLES, REGISTERS, DIFFUSERS SCHEDULE**

UNIT	TYPE	DIMENSIONS			MOUNTING	MAX CPM	P.D.	ACCESSORIES		
		FACE	NECK	WALL				MANUP.-MODEL	ANEMOSTAT	VOLUME DAMPER
E-1	EXHAUST REGISTER	10 1/4x	8 1/4	8x6	75	.03	ANEMOSTAT 3250SL	VOLUME DAMPER	-	-
E-2	EXHAUST GRILLE	8 1/2x	8 1/2	6x6	75	.03	ANEMOSTAT GC-5	VOLUME DAMPER	-	-
E-3	EXHAUST REGISTER	14 1/4x	8 1/4	12x6	235	.03	ANEMOSTAT 3250SL	VOLUME DAMPER	-	-
S-2	DOUBLE DEFLECTION SUPPLY REGISTER	22 1/4x	14 1/4	20x12	600	.03	ANEMOSTAT 2250	VOLUME DAMPER	-	-
S-3	DOUBLE DEFLECTION SUPPLY REGISTER	24 1/4x	14 1/4	22x12	750	.03	ANEMOSTAT 2250	VOLUME DAMPER	-	-
S-3	DOUBLE DEFLECTION SUPPLY REGISTER	20 1/4x	12 1/4	18x10	460	.03	ANEMOSTAT 2250	VOLUME DAMPER	-	-

**FINNED TUBE RADIATION SCHEDULE**

UNIT	ENCL HEIGHT	PIPE SIZE	MIN TIGERS PER FT.	MIN FIN S	BTU/FT	GPM	AWT	BAT	EWI	ENCLOSURE GAUGE	STERLING MODEL - PARTS 9	PERITTS 9	FIN DIMENSIONS
FT-A	9 1/8"	3/4"	1	52	510	1.0	170F	65F	-	22	STEEL - WALL	CU	2' x 2 1/2"

**PUMP SCHEDULE**

UNIT	LOCATION	SERVICES	GPM	HD. FT.	MOTOR RPM	HP	VOLTS	PHASE	MANUP. - MODEL
CP-1	BOILER ROOM	GROUND FLOOR HEATING LOOP	3	2.0	3250	1/40	115	1	TACO - 003-B4
CP-2	BOILER ROOM	2ND & 3RD FLOOR HEATING LOOP	15.0	15.0	3250	1/8	115	1	TACO - 0014-BFI
CP-3	BOILER ROOM	4TH & 5TH FLOOR HEATING LOOP	16.0	16.0	3250	1/8	115	X	TACO - 0011-BFI

1 BOILER PIPING DIAGRAM  
 SCALE: NONE

