

FOR
SUBMISSION
7-12-05

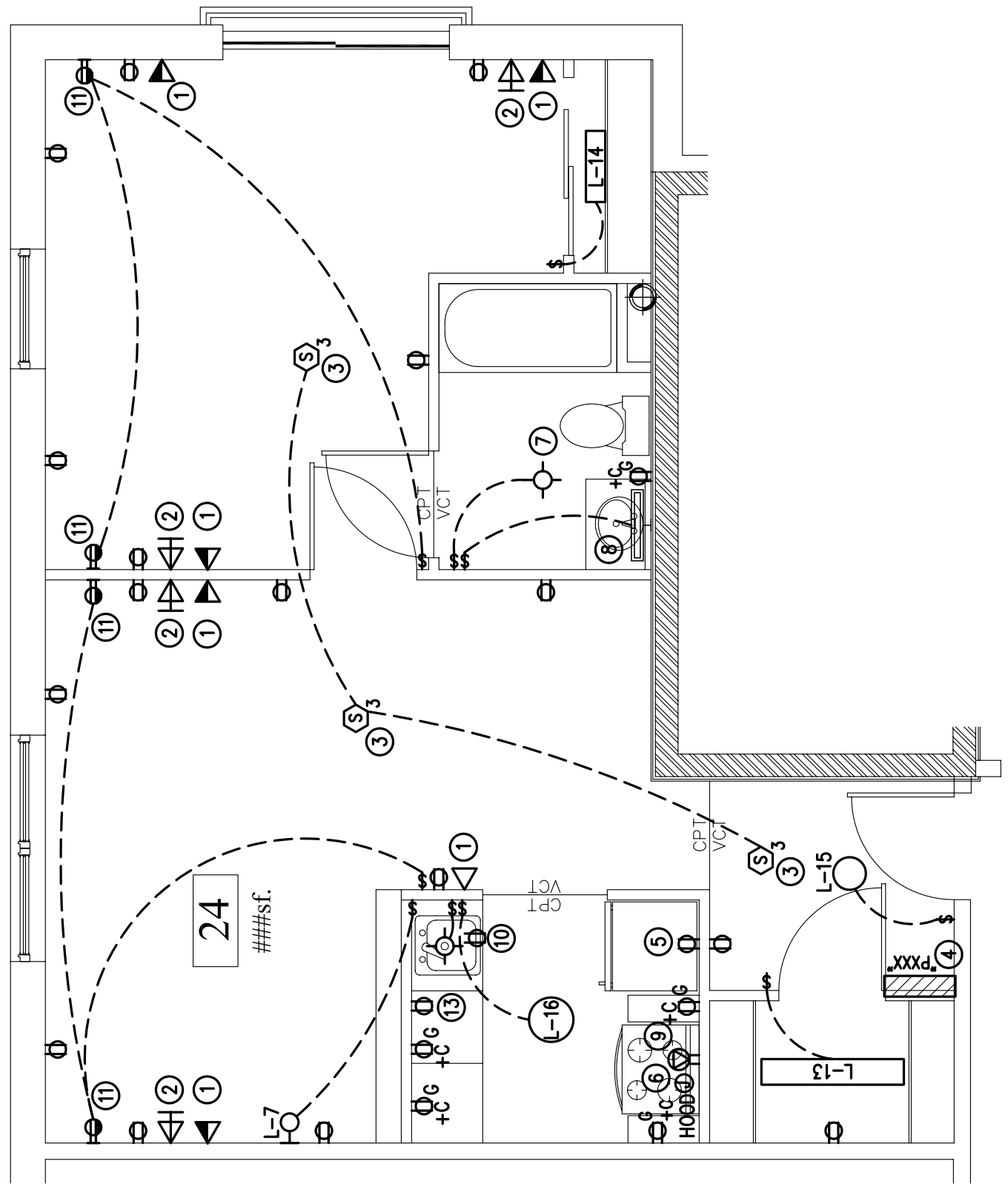
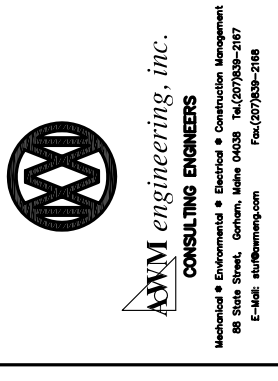
WALKER TERRACE
ELECTRICAL
UNIT TYPES "A" THRU "F" TYPICAL
LIGHTING/POWER PLANS

Date: 7-12-05
Drawn By: CLC
Revisions:
Checked By: AWM
Scale: AS NOTED

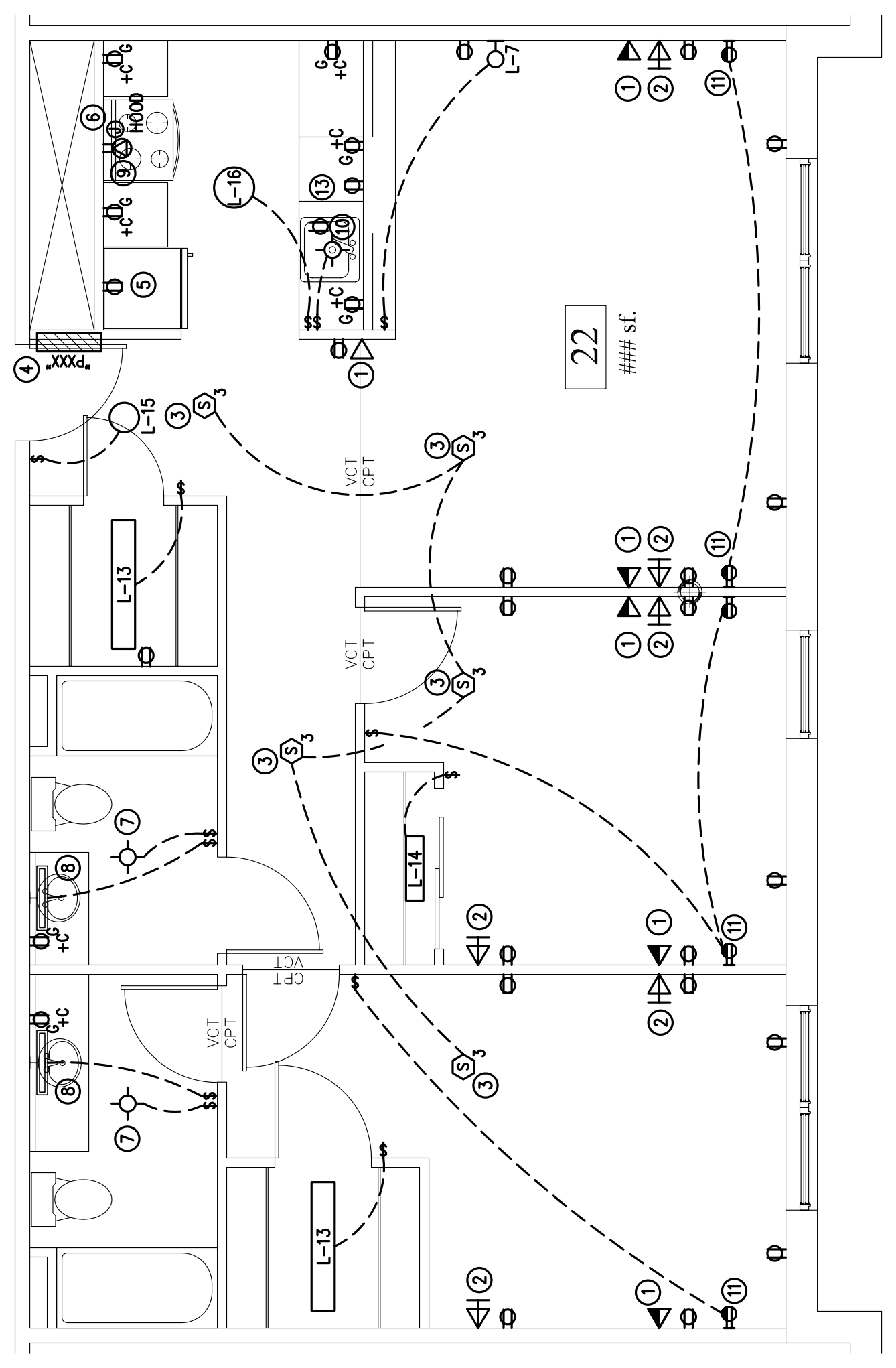
ARCHETYPE, P.A.
ARCHITECTS
48 Union Wharf Portland, Maine 04101
(207) 772-6022 Fax (207) 772-4056

Project: WALKER TERRACE
Walker Street,
Portland, Maine 04101

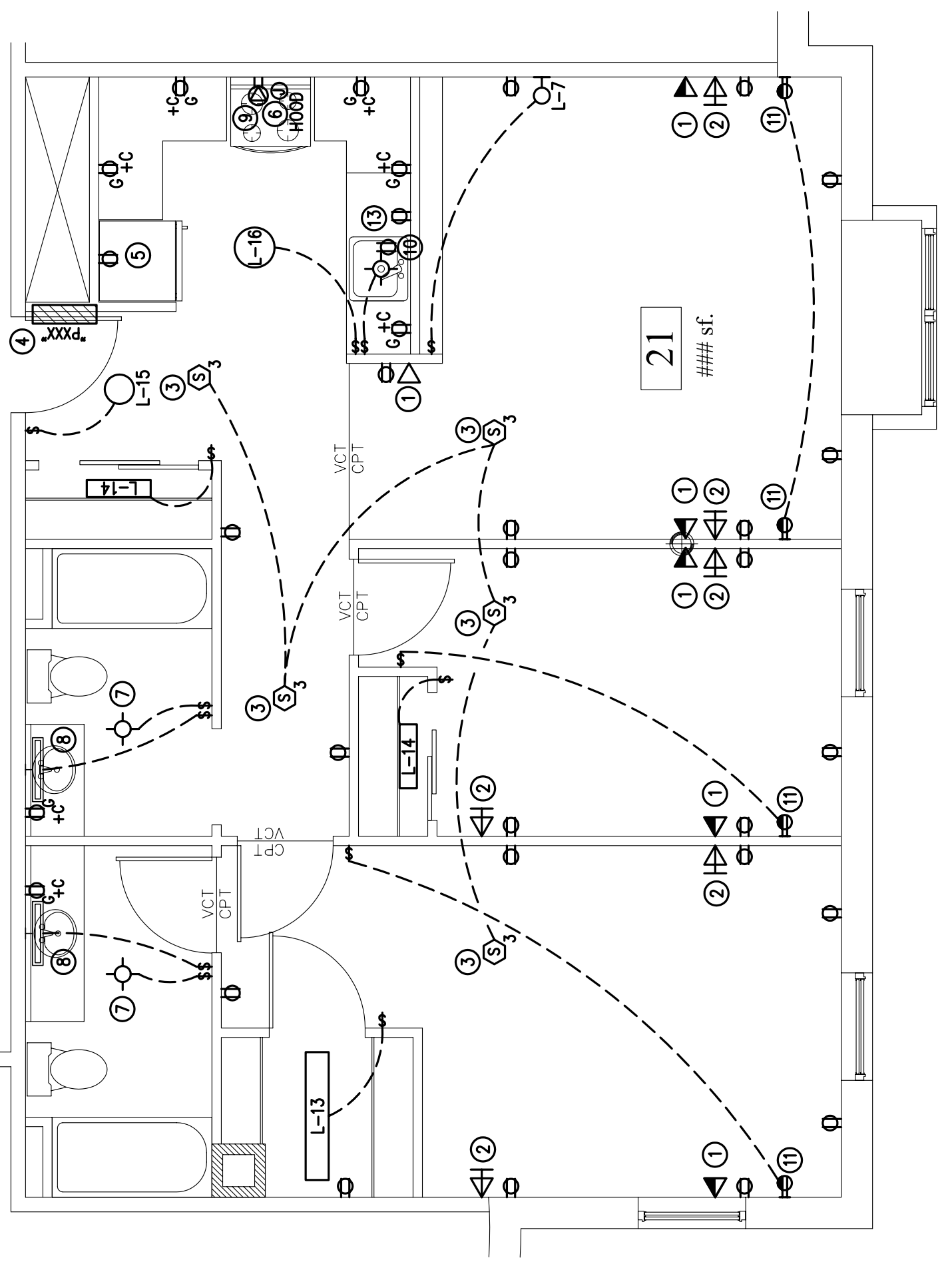
Owner: MAINE WORKFORCE HOUSING, LLC
One Longfellow Square, Portland, Maine 04101
(207) 871-9811 Fax (207) 761-0155



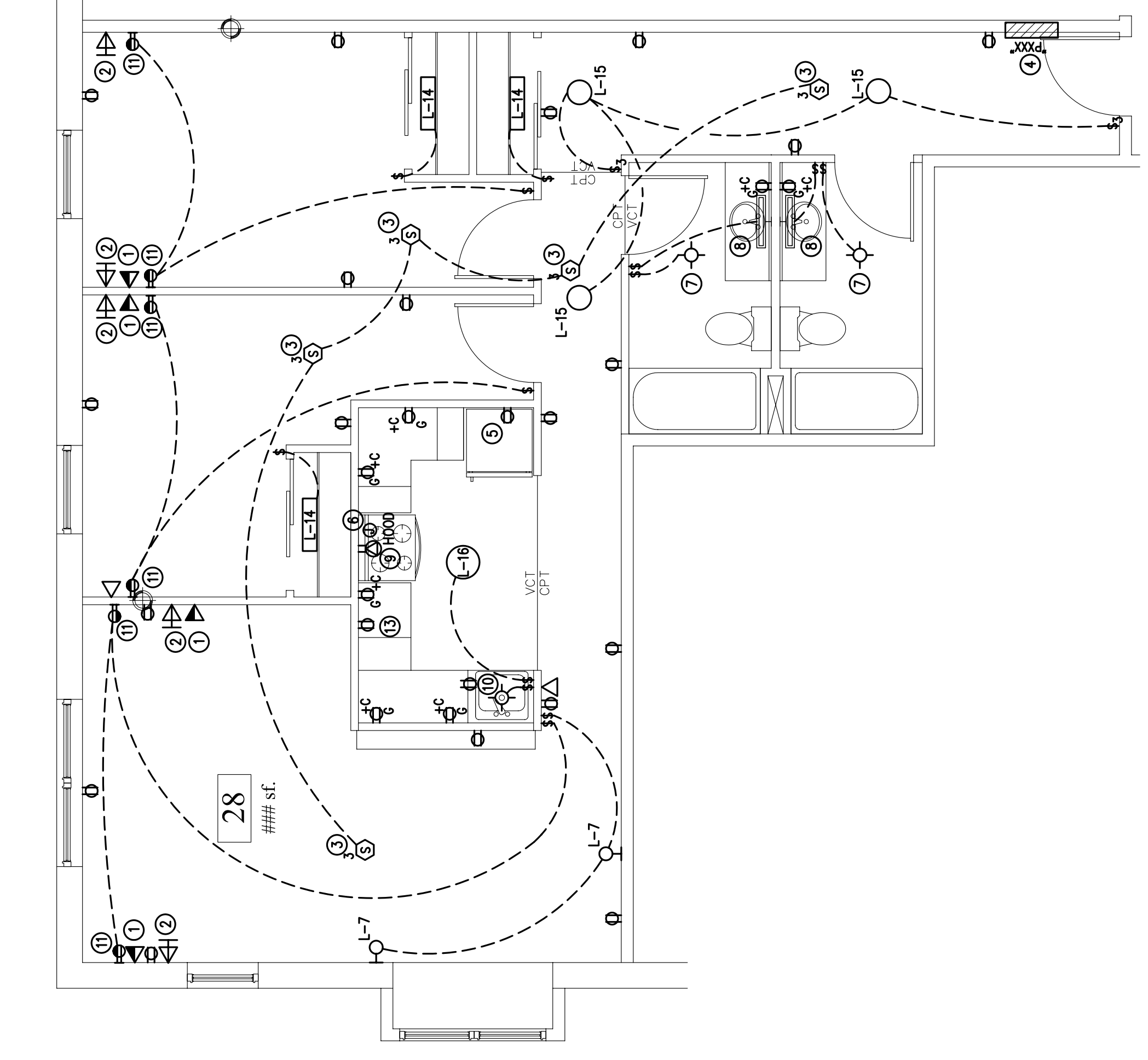
A TYPICAL UNIT TYPE "C" — ELECTRICAL PLAN
SCALE: 1/4"=1'-0"



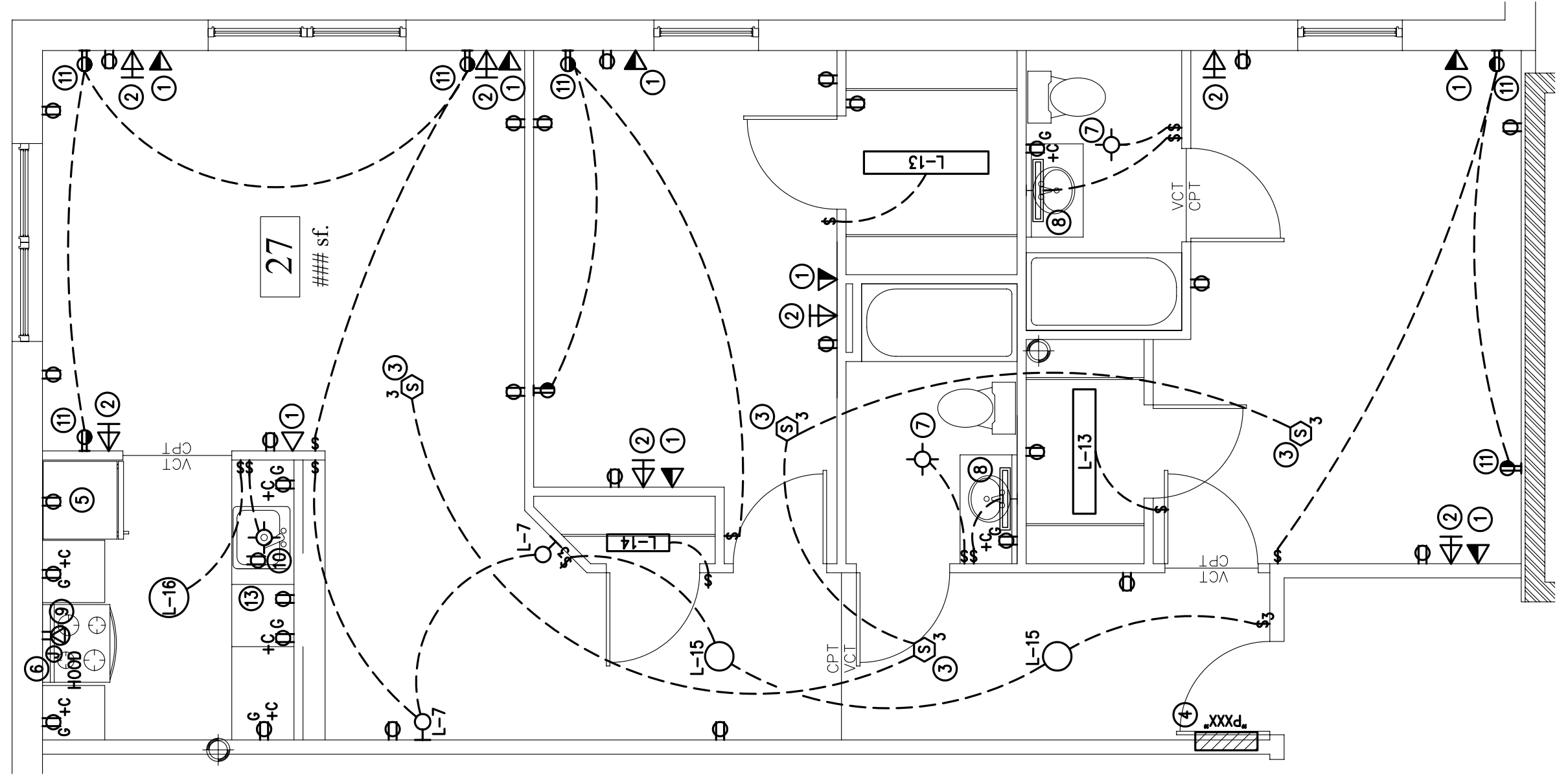
B TYPICAL UNIT TYPE "B" — ELECTRICAL PLAN
SCALE: 1/4"=1'-0"



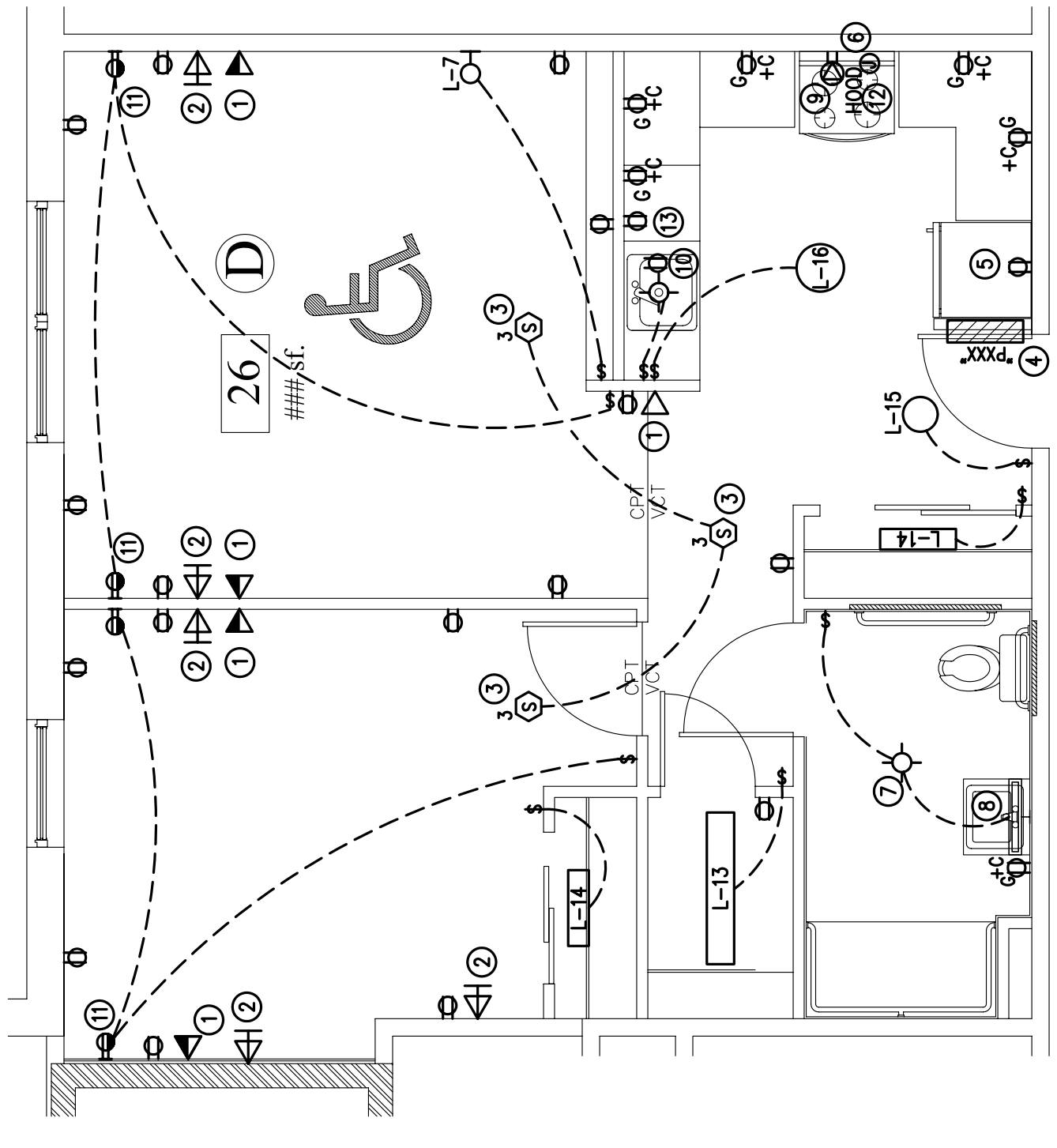
A TYPICAL UNIT TYPE "A" — ELECTRICAL PLAN
SCALE: 1/4"=1'-0"



F TYPICAL UNIT TYPE "F" — ELECTRICAL PLAN
SCALE: 1/4"=1'-0"



E TYPICAL UNIT TYPE "E" — ELECTRICAL PLAN
SCALE: 1/4"=1'-0"



D TYPICAL UNIT TYPE "D" — ELECTRICAL PLAN
SCALE: 1/4"=1'-0"

- KEY NOTES LEGEND:
- NEW TELEPHONE TERMINATION L-RIS AND COMPUTER NETWORK PLUG. CABLE FROM BOX TO BOX. FROM BOX TO MAIN ELECTRICAL COMMUNICATIONS TERMINATION BLOCK PATCH.
 - PROVIDE CABLE TELEVISION TERMINATION. PROVIDE SINGLE HOMERUN TO CABLE TERMINATION FROM BOX TO BOX. PROVIDE SINGLE HOMERUN TO CABLE TERMINATION BLOCK.
 - PROVIDE 120V SINGLE STATION SMOKE DETECTOR WITH SOUNDER BASE. INTERCONNECT ALL DEVICES WITHIN THE UNIT. DEVICES IN A.D.A. UNITS SHALL HAVE VISUAL STROBES.
 - PROVIDE NEW 100AMP MAIN CIRCUIT BREAKER, 20 POLE 120V/240V, 1 PH. 3 WIRE LOAD CENTER 1000AIC. PROVIDE (3/4"x3/8") 2" C FEEDER FROM MAIN ELECTRICAL ROOM.
 - PROVIDE DEDICATED 120V, 20 AMP CIRCUIT FOR REFRIGERATOR.
 - PROVIDE DEDICATED 120V, 20 AMP CIRCUIT FOR HOOD AND MICROWAVE.
 - PROVIDE COMBINATION FAN/LIGHT FIXTURE. SEE MECH DWGS.
 - PROVIDE 120V CONNECTION IN SINGLE GANG JUNCTION BOX 4"X4" ABOVE FINISHED FLOOR TO MEDICINE CABINET LIGHT FIXTURE (BY OTHERS). CONNECT TO BATHROOM LIGHTING CIRCUIT VIA WALL SWITCH.
 - PROVIDE FLUSH MOUNT 240V GROUNDED 50A/2P RANGE RECEPTACLE.
 - PROVIDE 120V RECEPTACLE FOR GARBAGE DISPOSAL UNDER CABINET.
 - PROVIDE LIGHTING CONTROLLED RECEPTACLE. THE BOTTOM OUTLET SHALL BE SWITCHED, THE TOP SHALL BE CONNECTED AHEAD OF SWITCHING FOR CONTINUOUS USE.
 - A.D.A. UNIT TYPES ONLY. PROVIDE WALL SWITCH MOUNTED ABOVE COUNTER FOR EXHAUST HOOD OPERATION.
 - PROVIDE UNDER-COUNTER 120V, 20 AMP RECEPTACLE FOR DISHWASHER.
 - ANTI-STRATIFICATION FAN. PROVIDE WALL SPEED SWITCH AT FOOT OF STAIRS AND 120V CIRCUIT.