

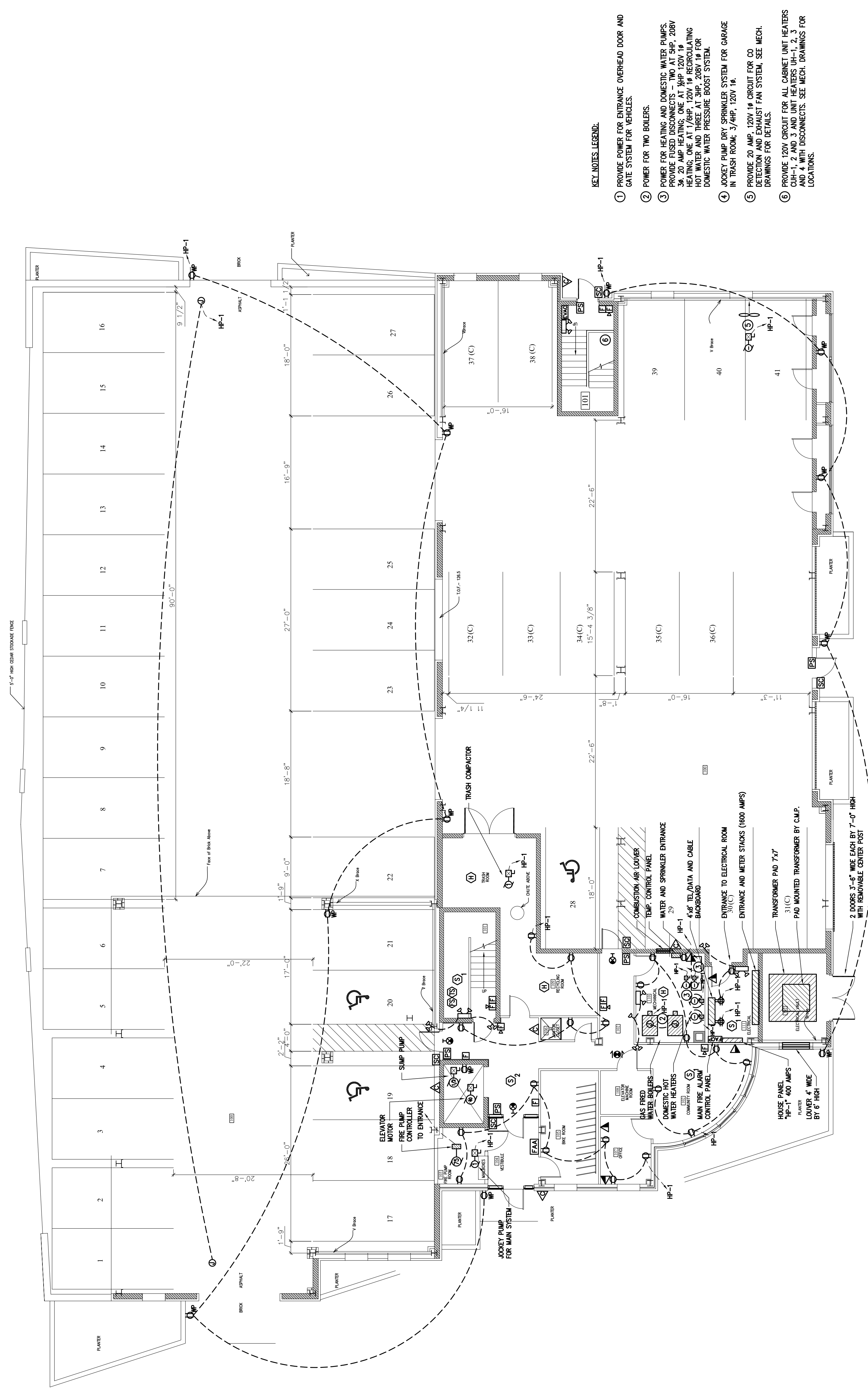
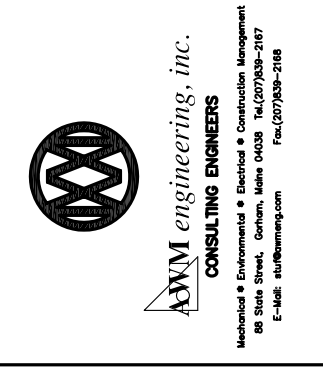
WALKER TERRACE
ELECTRICAL
GROUND/FIRST FLOOR
POWER PLAN

Date: 7-12-05
Drawn By: CLC
Checked By: AWM
Scale: AS NOTED

ARCHETYPE, P.A.
ARCHITECTS
48 Union Wharf Portland, Maine 04101
(207) 772-6022 Fax (207) 772-4056

Project:
WALKER TERRACE
Portland, Maine 04101

Owner:
MAINE WORKFORCE HOUSING, LLC
One Longfellow Square, Portland, Maine 04101
(207) 871-9811 Fax (207) 761-0155



- KEY NOTES LEGEND:
- ① PROVIDE POWER FOR ENTRANCE OVERHEAD DOOR AND GATE SYSTEM FOR VEHICLES.
 - ② POWER FOR TWO BOILERS.
 - ③ POWER FOR HEATING AND DOMESTIC WATER PUMPS. PROVIDE FUSED DISCONNECTS - TWO AT SHP, 200V 3P, 20 AMP HEATING; ONE AT SHP, 120V 1P 20 AMP HEATING; ONE AT SHP, 200V 3P, 20 AMP HEATING. PROVIDE FUSED DISCONNECTS FOR DOMESTIC WATER PUMPS AND THREE AT SHP, 200V 1P FOR DOMESTIC WATER PRESSURE BOOST SYSTEM.
 - ④ JOCKEY PUMP DRY SPRINKLER SYSTEM FOR GARAGE IN TRASH ROOM. 3/4HP, 120V 1P.
 - ⑤ PROVIDE 20 AMP, 120V 1P CIRCUIT FOR CO DETECTION AND EXHAUST FAN SYSTEM. SEE MECH. DRAWINGS FOR DETAILS.
 - ⑥ PROVIDE 120V CIRCUIT FOR ALL CABINET UNIT HEATERS CUH-1, 2 AND 3 AND UNIT HEATERS UH-1, 2, 3 AND 4 WITH DISCONNECTS. SEE MECH. DRAWINGS FOR LOCATIONS.

GROUND/FIRST FLOOR POWER PLAN
SCALE: 1/8" = 1'-0"