

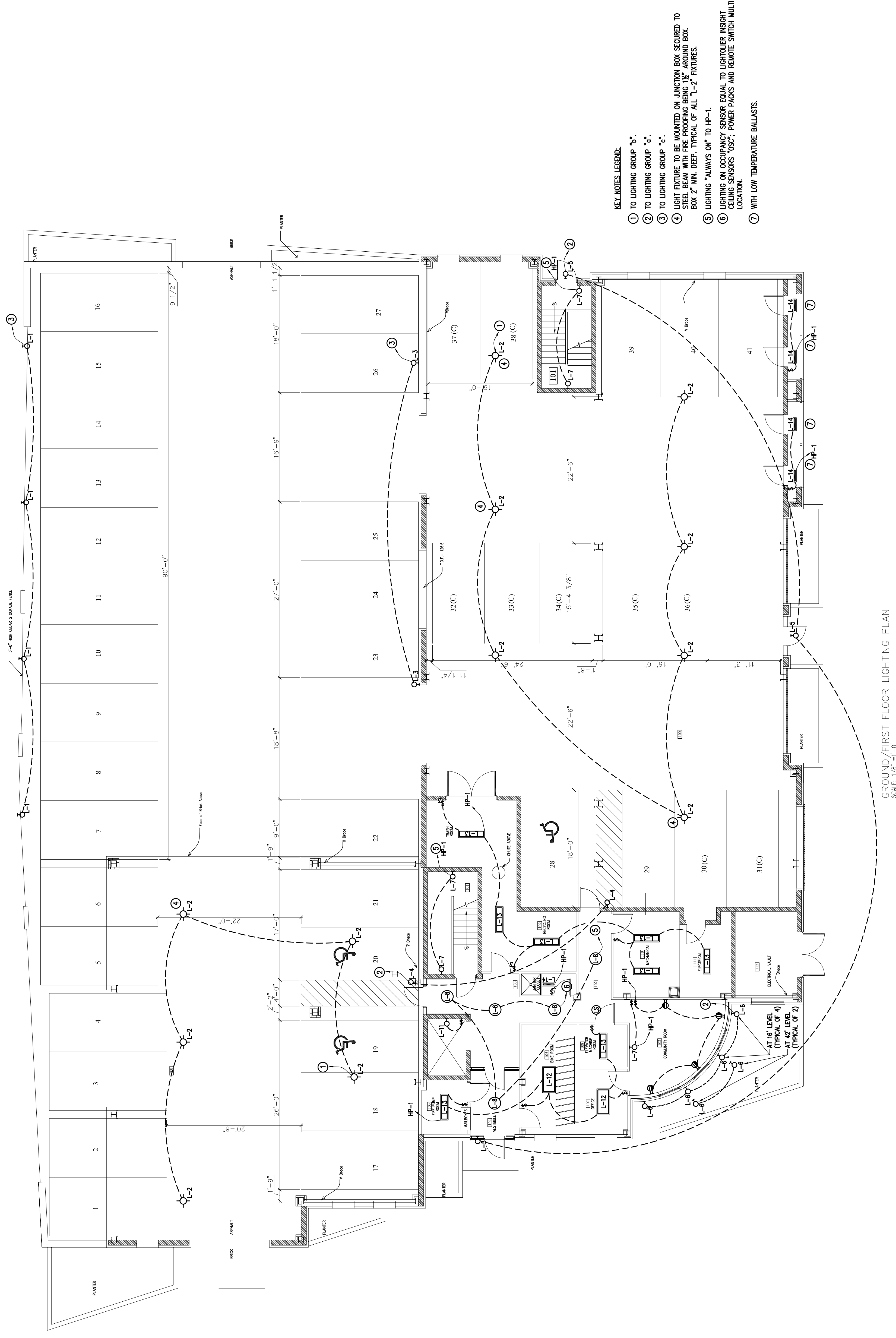
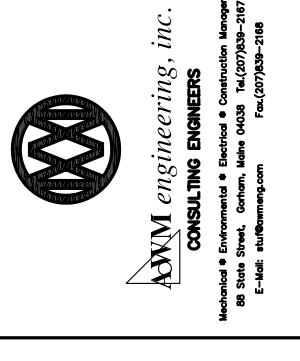
WALKER TERRACE  
ELECTRICAL  
GROUND/FIRST FLOOR  
LIGHTING PLAN

Date:	7-12-05
Scale:	AS NOTED
Drawn By:	CLC
Checked By:	AWM
Revisions:	

ARCHETYPE, P.A.  
ARCHITECTS  
48 Union Wharf Portland, Maine 04101  
(207) 772-6022 Fax (207) 772-4056

Project:  
WALKER TERRACE  
Walker Street,  
Portland, Maine 04101

Owner:  
MAINE WORKFORCE HOUSING, LLC  
One Longfellow Square, Portland, Maine 04101  
(207) 871-9811 Fax (207) 761-0155



- KEY NOTES LEGEND:
- ① TO LIGHTING GROUP "A".
  - ② TO LIGHTING GROUP "B".
  - ③ TO LIGHTING GROUP "C".
  - ④ LIGHT FIXTURE TO BE MOUNTED ON JUNCTION BOX SECURED TO STEEL FRAME WITH BRACKETING BUSHING. ROUND BOX. BOX 2" MIN. DEEP. TYPICAL OF ALL "L-2" FIXTURES.
  - ⑤ LIGHTING "ALWAYS ON" TO HP-1.
  - ⑥ LIGHTING ON OCCUPANCY SENSOR EQUAL TO LIGHTOWER INSIGHT CEILING SENSORS "OSCC". POWER PACKS AND REMOTE SWITCH MULTI-LOCATION.
  - ⑦ WITH LOW TEMPERATURE BALLASTS.

GROUND/FIRST FLOOR LIGHTING PLAN  
SCALE: 1/8" = 1'-0"