

Owner: MAINE WORKFORCE HOUSING, LLC
 One Longfellow Square, Portland, Maine 04101
 (207) 871-9811 Fax (207) 761-0155

Project: WALKER TERRACE
 Walker Street,
 Portland, Maine 04101

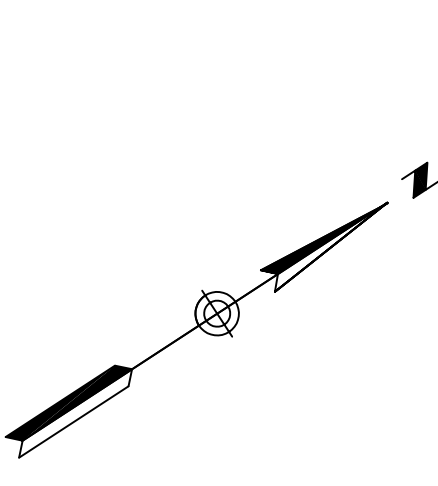
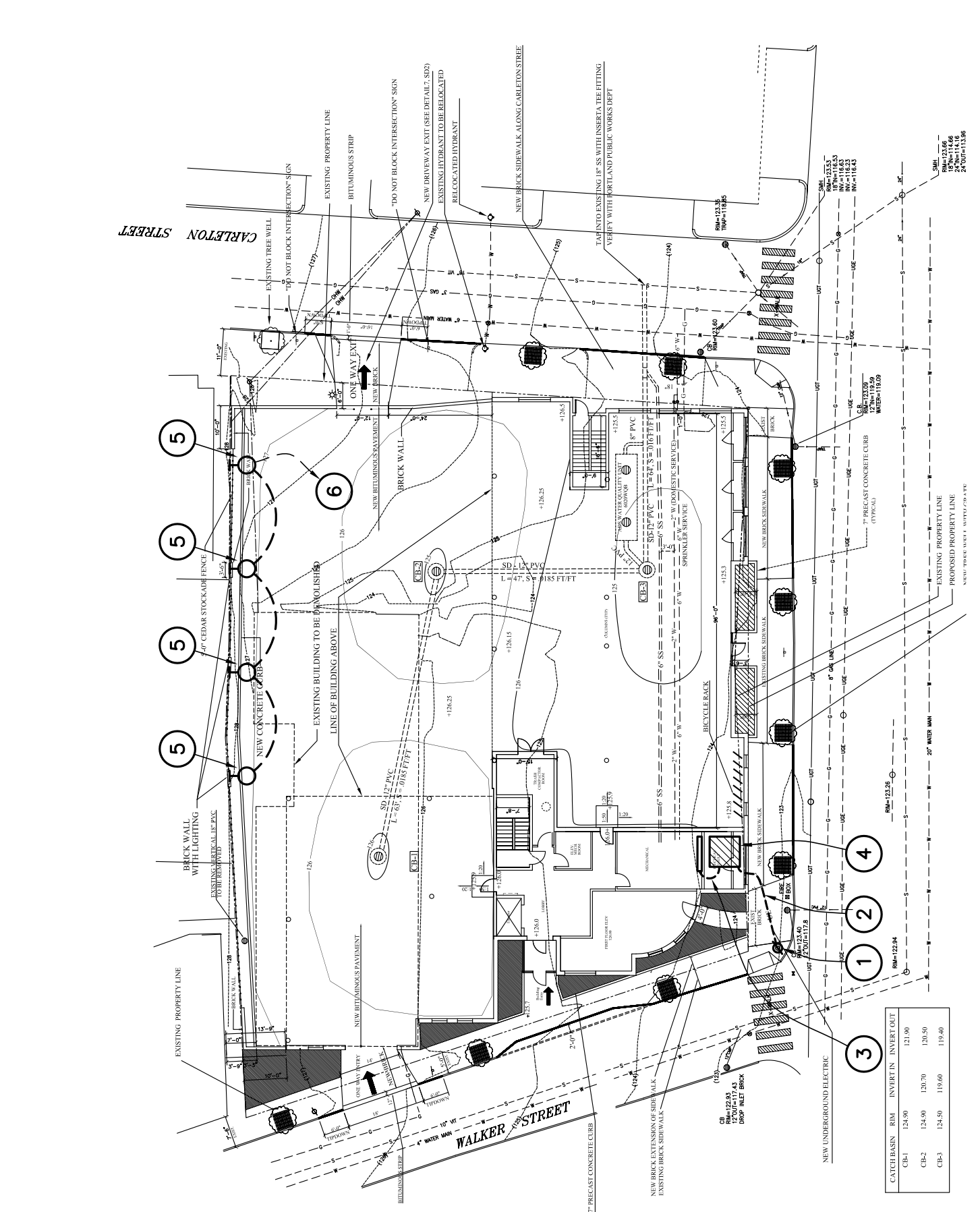
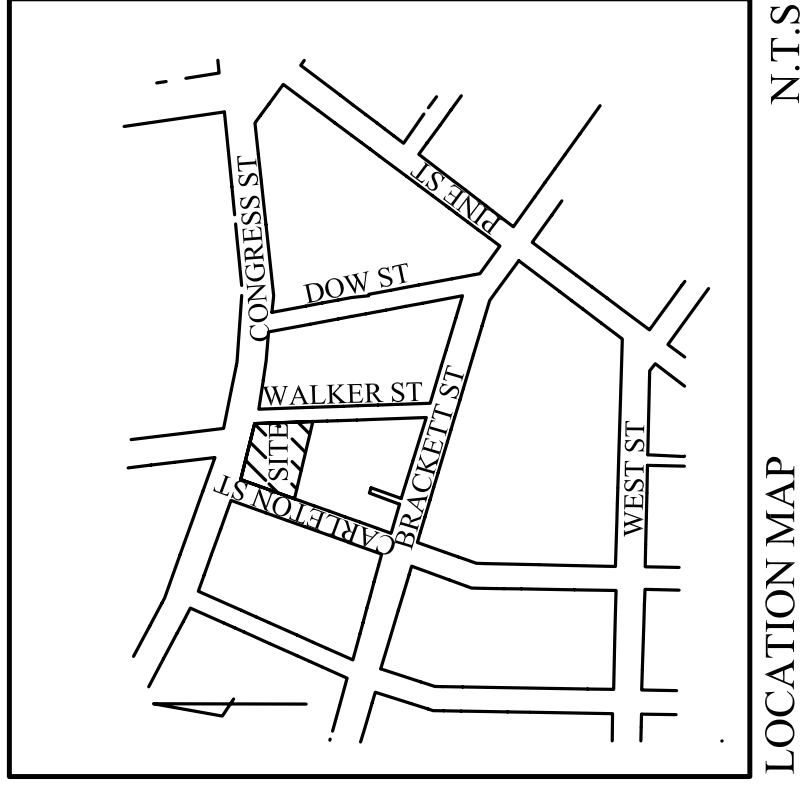
ARCHETYPE, P.A. ARCHITECTS
 48 Union Wharf Portland, Maine 04101
 (207) 772-6022 Fax (207) 772-4056

Date: 7-12-05
 Revisions:
 Drawn By: CLC
 Checked By: AWM
 Scale: AS NOTED

WALKER TERRACE
 ELECTRICAL
 SITE PLAN, DETAILS,
 LEGEND, NOTES & SCHEDULES

E0

FOR
 SUBMISSION
 7-12-05



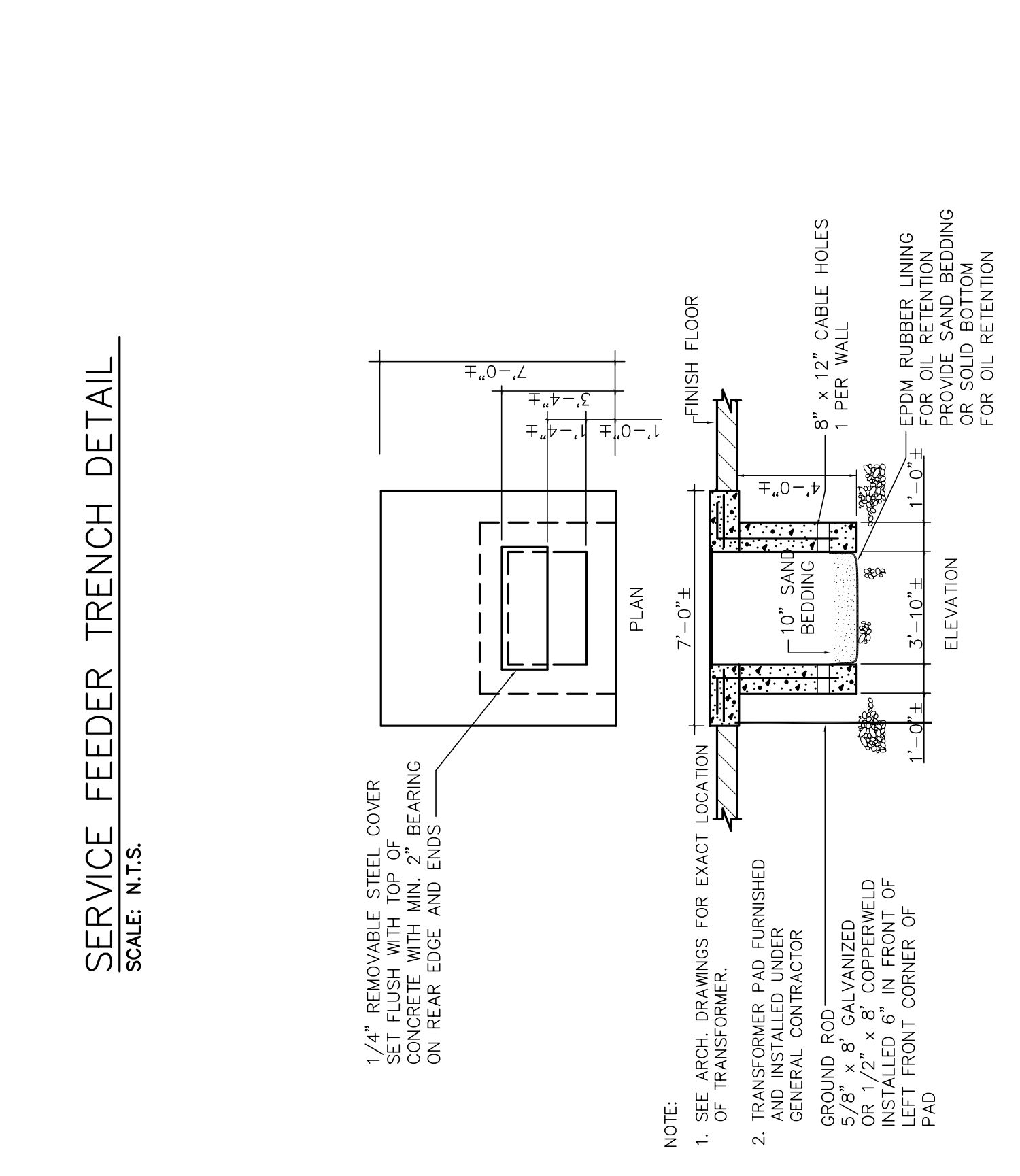
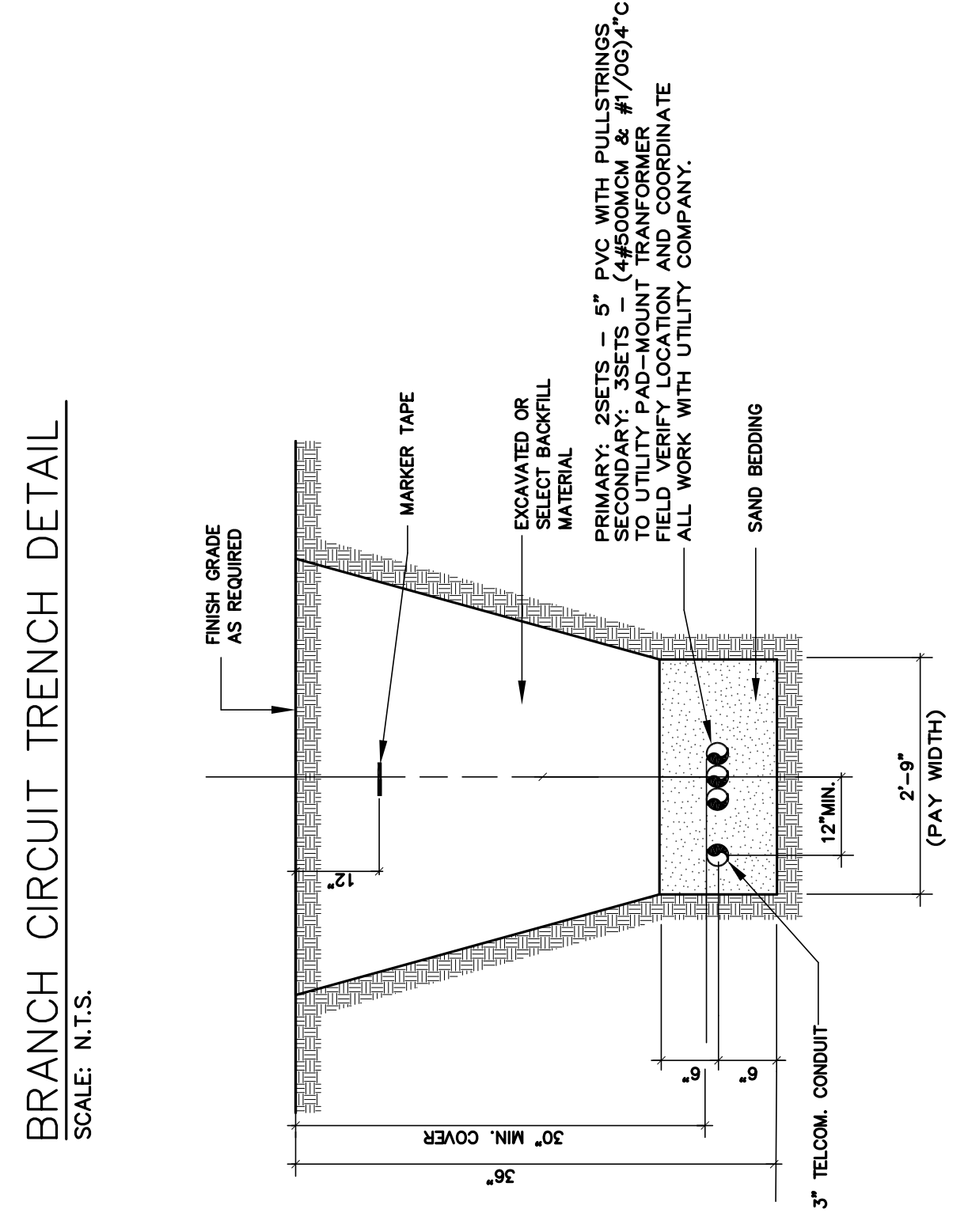
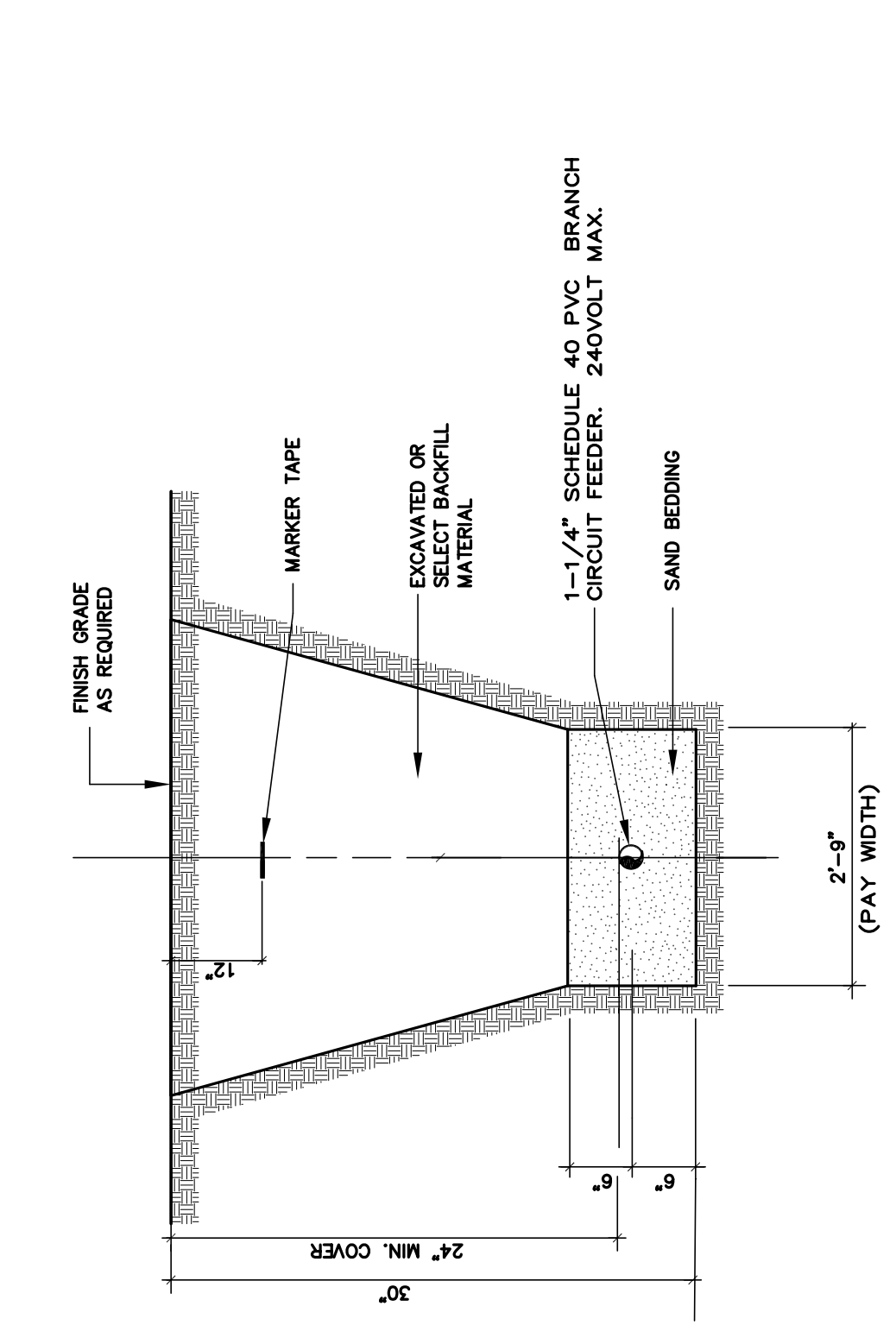
- KEY NOTES**
- EXISTING OVERHEAD UTILITY POLE TO REMAIN. NEW UNDERGROUND SERVICE SHALL BE CONNECTED AT THIS POINT BY THE UTILITY COMPANY.
 - NEW UNDERGROUND PRIMARY SERVICE FEED. CONTRACTOR TO PROVIDE CONDUIT AND TRENCH. SEE TRENCH DETAILS AND RISER DIAGRAM.
 - NEW UNDERGROUND SECONDARY SERVICE FEED. CONTRACTOR TO PROVIDE CONDUIT, CABLE AND INSTALLATION TERMINATIONS AT THE TRANSFORMER BY THE UTILITY COMPANY. SEE TRENCH DETAILS AND RISER DIAGRAM.
 - NEW UTILITY COMPANY PAID MOUNT TRANSFORMER. PROVIDE NEW 7' X 7' WOODEN TRANSFORMER PAD PER UTILITY COMPANY STANDARDS. SEE TRANSFORMER PAD DETAIL.
 - NEW L-1 PEDESTRIAN SCALE SITE LIGHTING FIXTURE. SEE LIGHTING FIXTURE SCHEDULE.
 - (2#10 & #1000)" SCHEDULE 40 PVC UNDERGROUND SITE LIGHTING FEEDER - LIGHTING GROUP "c".

- LEGEND**
- POWER DISTRIBUTION**
- PANELBOARD
 - TEL/DATA AND CABLE TV PATCH PANEL
 - HEAVY DUTY FUSED DISCONNECT SWITCH
 - HEAVY DUTY NON-FUSED DISCONNECT SWITCH
 - MOTOR (NUMERAL INDICATES HP)
 - JUNCTION BOX
 - WIRING UNDERGROUND OR UNDERSLAB
 - HOMERUN--2#12G UNLESS GREATER THAN 75'
 THEN PROVIDE 2#10, #12G UNLESS NOTED OTHERWISE
 - MULTI-PHASE HOMERUN OR MULTIPLE HOMERUNS
 UTILIZING THE SAME CONDUIT - 3 OR 4 #12, 1 #12G
 UNLESS GREATER THAN 75'. THEN PROVIDE 3 OR 4 #10,
 1 #10G UNLESS NOTED OTHERWISE

- RECEPTACLES**
- MOUNT WITH CENTERLINE 18" AFF UNO.
 - MOUNT EXTERIOR WITH CENTERLINE 24" AFG UNO
 - DUPLEX RECEPTACLE - 20A, 125V
 - TWO DUPLEX RECEPTACLES - 20A, 125V
 - DUPLEX RECEPTACLE - 20A, 125V - MOUNT WITH CENTERLINE AT 8" ABOVE CABINET TOP.
 - GFCI TYPE DUPLEX RECEPTACLE
 - GFCI RECEPTACLE WITH WEATHERPROOF COVER
 - DUPLEX RECEPTACLE - 20A, 125V TOP OUTLET SWITCHED
 - DRYER PLUG 30 AMP 1 PHASE 208V CIRCUIT
- COMMUNICATIONS SYSTEM**
- MOUNT 18" AFF UNLESS NOTED OTHERWISE.
 - TELEPHONE ONLY OUTLET: 1-RJ11
 - TELE/DATA OUTLET: 1-RJ41 VOICE, 1-RJ45 DATA
- FIRE ALARM SYSTEM**
- FACP FIRE ALARM CONTROL PANEL
 - FAPA FIRE ALARM ANNUNCIATOR
 - EVAC VOICE EVACUATION CONTROL AND FIREMANS COMMUNICATION PANEL (EACH STAIR TOWER LANDING)
 - FSM FIRE ALARM SMOKE DETECTORS
 - "1" - DENOTES SYSTEM SMOKE
 - "2" - DENOTES ELEVATOR RECALL
 - "3" - DENOTES SINGLE STATION DETECTORS 120 VOLT WIRE TO SOUND ALL DEVICES WITHIN UNIT AND TROUBLE TO SYSTEM
 - "4" - DENOTES SUPPLY AIR DUCT DETECTOR WITH REMOTE TEST AND STATICS STATION ON FLOOR BELOW
 - HEAT DETECTOR - 135°
 - MANUAL PULL STATION

- ALL STROBES ARE 75cd UNLESS NOTED OTHERWISE
- AVS AUDIO/VISUAL INDICATING DEVICE
 - MAI MINI AUDIO/VISUAL INDICATING DEVICE
 - AI AUDIO INDICATING DEVICE
 - ST SPRINKLER TAMPER AND FLOW SWITCH OFF STANDPIPES FOR EACH FLOOR AND ZONE
- LIGHTING FIXTURES:**
- NEW: FR1 - FIXTURE TYPE
 GS - SWITCHING
- WALL MOUNTED
 - CEILING MOUNTED
 - LIGHT SENSOR (MOTION ACTIVATED)
 - EMERGENCY BATTERY LIGHTING UNIT W/HEADS TIE TO LIGHTING CIRCUIT
 - REMOTE EMERGENCY HEADS
 - UNIVERSAL MOUNT EXIT SIGN - SINGLE FACE ARROWS AS INDICATED ON LIGHTING PLANS
 - EDGE MOUNT EXIT SIGN - DOUBLE FACE ARROWS AS INDICATED ON LIGHTING PLANS
 - COMBINATION LIGHT/MULTI-SPEED EXHAUST FAN PANASONIC
- SWITCHES**
- \$ SINGLE POLE
 - \$3 THREE WAY
 - \$B BOILER BURNER SWITCH
 - \$K KEY SWITCH W/ L.E.D. PILOT LIGHT

- SECURITY SYSTEM** - (COORDINATE WITH OWNER FURNISHED SYSTEMS)
- CAV CAMERA OUTLET WITH POWER - COORDINATE WITH OWNER SECURITY SYSTEM MOUNT 7'-6" AFF
 - CS SECURITY AND CALL STATION FOR ACCESS AND APARTMENT COMMUNICATION
 - ES POWER FOR SECURITY DOOR ACCESS



NOTE:
 1. SEE ARCH. DRAWINGS FOR EXACT LOCATION OF TRANSFORMER.
 2. TRANSFORMER PAD FURNISHED AND INSTALLED UNDER GENERAL CONTRACTOR

GROUND ROD:
 5/8" x 8' GALVANIZED OR 1/2" x 8" COPPERWELD INSTALLED 6" IN FRONT OF LEFT FRONT CORNER OF PAD

FROM RUBBER LINING PROVIDE SAND BEDDING OR SOLID BOTTOM FOR OIL RETENTION