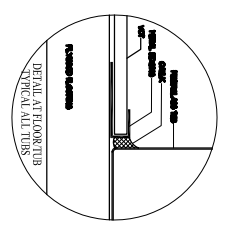
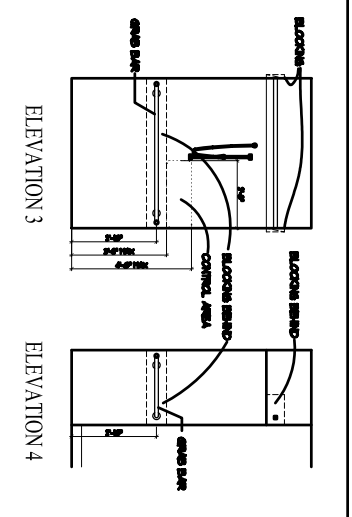
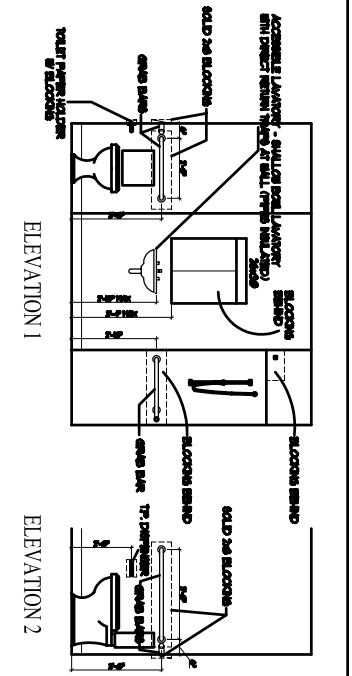
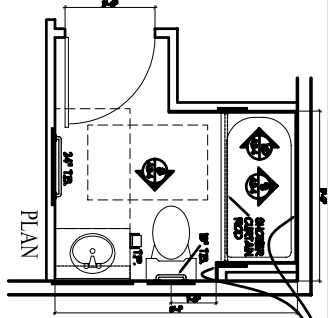


UNIT 23 - ACCESSIBLE

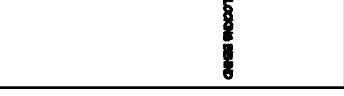
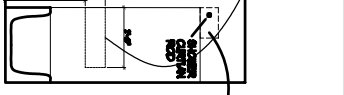
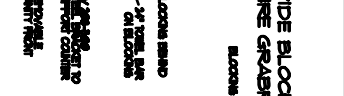
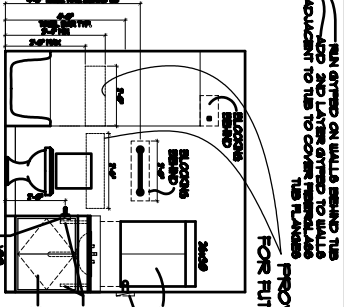
- NOTES:
 1. ACCESSIBLE LAVATORY, SHALLOW ROWL LAVATORY WITH DIRECT RETURN TRAPS AT WALL
 2. ROLL-IN SHOWER GROUT BELOW FIBERGLASS SHOWER BASE



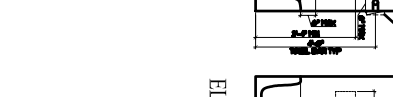
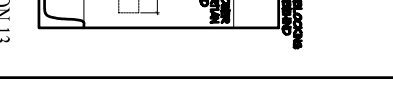
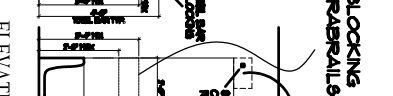
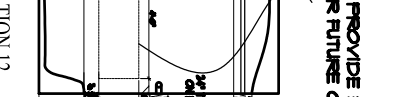
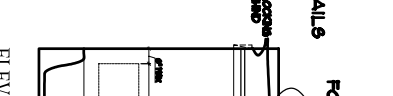
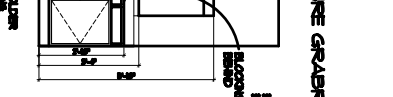
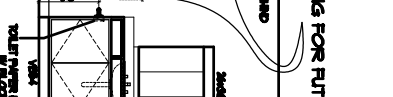
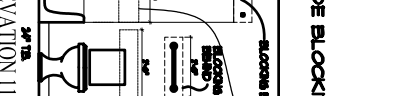
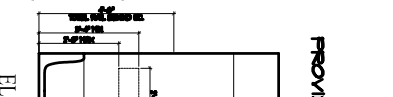
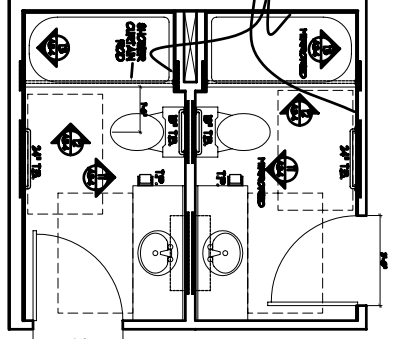
PROVIDE TYPICAL BLOCKING FOR ALL BATH ACCESSORIES ALL VANITY CABINETS ARE 2" DEEP



**UNIT 29 - ADAPTABLE
 UNIT 39 - ADAPTABLE
 UNIT 49 - ADAPTABLE**



RNA STRIP ON WALL BEHIND THE ACP AND LATER STRIP TO WALLS ADJACENT TO TUB TO COVER FIBERGLASS TUB FLANGES



A34	BATHROOM PLANS	Date 12 July 2005	Scale 1/2" = 1'-0"
	WALKER TERRACE	Revisions:	Checked By:
ONE WALKER STREET PORTLAND, MAINE	ARCHETYPE, P.A. ARCHITECTS 48 Union Wharf Portland, Maine 04101 (207) 772-6022 Fax (207) 772-4056		
		OWNER: MAINE WORKFORCE HOUSING, LLC One Longfellow Square, Portland, Maine 04101 (207) 871-9811 Fax (207) 761-0155	