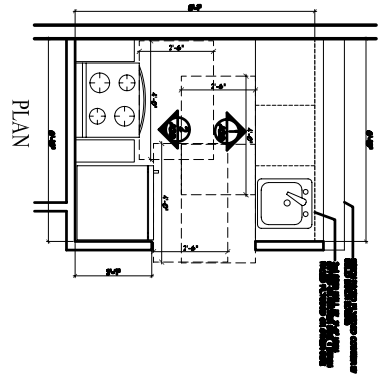
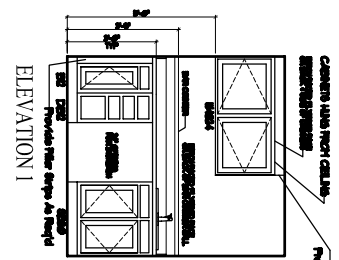


Ⓐ BIRCH COUNTER TOP DETAIL
SCALE: 1" = 1'-0"

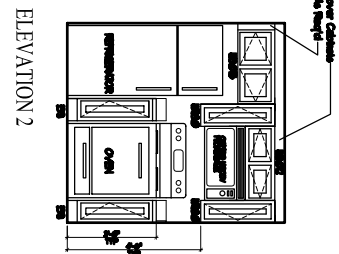
UNIT 24 - ADAPTABLE
UNIT 34 - ADAPTABLE
UNIT 44 - ADAPTABLE
UNIT 56 - ADAPTABLE



PLAN



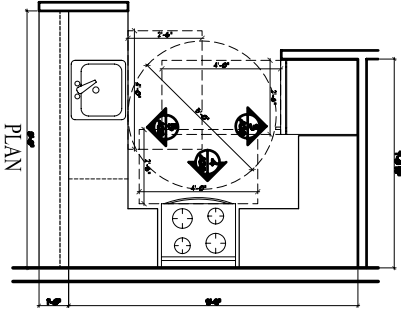
ELEVATION 1



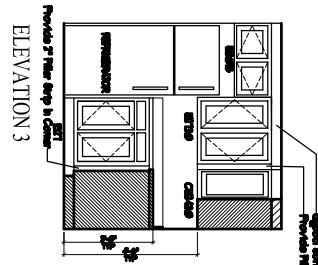
ELEVATION 2

DIMENSIONS ON ALL PLANS
ARE FROM STUD TO STUD

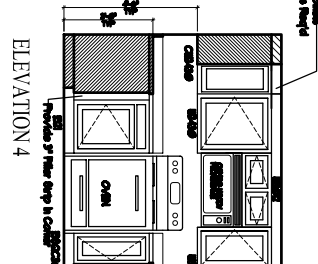
UNIT 21 - ADAPTABLE
UNIT 31 - ADAPTABLE
UNIT 41 - ADAPTABLE



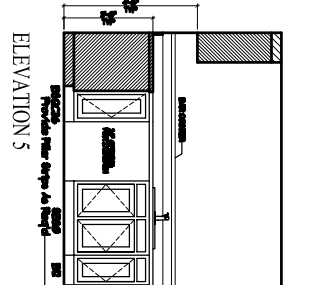
PLAN



ELEVATION 3

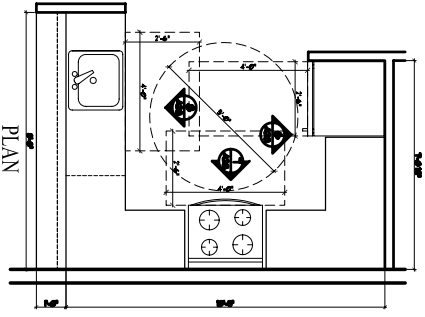


ELEVATION 4

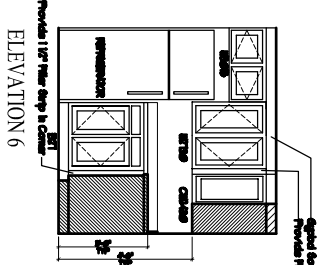


ELEVATION 5

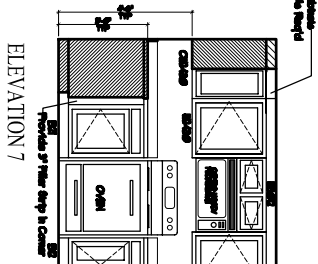
UNIT 25 - ADAPTABLE
UNIT 35 - ADAPTABLE
UNIT 45 - ADAPTABLE



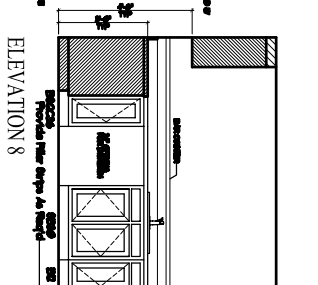
PLAN



ELEVATION 6



ELEVATION 7



ELEVATION 8

A28

KITCHEN PLANS
Project: WALKER TERRACE
ONE WALKER STREET
PORTLAND, MAINE

Date: 12 July 2005
Revisions:
Scale: 1/2" = 1'-0"
Checked By:

ARCHETYPE, P.A.
ARCHITECTS
48 Union Wharf Portland, Maine 04101
(207) 772-6022 Fax (207) 772-4056

OWNER:
MAINE WORKFORCE HOUSING, LLC
One Longfellow Square, Portland, Maine 04101
(207) 871-9811 Fax (207) 761-0155