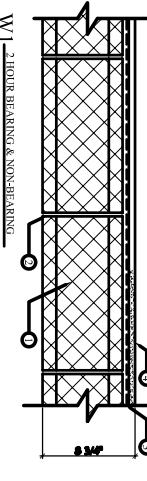


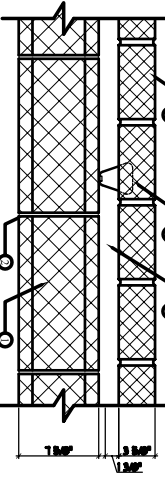
# WALL TYPES

**W1 BEARING EXTERIOR BRICK WALL - CHIMNEY**



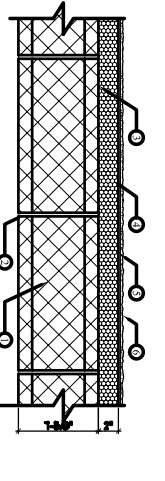
1. Masonry Blocks - 8" x 8" x 16" (CMU)
2. Mortar - Blocks laid full bed of mortar, min. 3/8 in. thick, of bed fast then 2-1/4 in. and one hour 2-1/2 parts of clean sand to 1 part Portland cement (proportioned by volume) and not less than 20 percent hydrated lime (by cement volume). Vertical joints suggested.
3. Chimney - 4" x 8" structural Channel (A500D)
4. Flue - 4" x 8" (8" O.D.) (A500D)

**W2 BEARING EXTERIOR BRICK WALL WITH STAIR/ELEVATOR SHAFT**



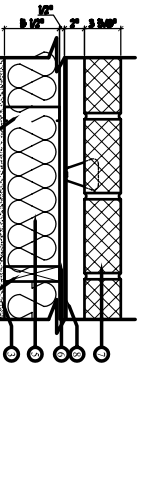
1. Concrete Block - 8" x 8" (Gymn block) (A500D)
2. Mortar - Blocks laid full bed of mortar, min. 3/8 in. thick, of bed fast then 2-1/4 in. and one hour 2-1/2 parts of clean sand to 1 part Portland cement (proportioned by volume) and not less than 20 percent hydrated lime (by cement volume). Vertical joints suggested.
3. Concrete Block - 8" x 8" (Gymn block) (A500D)
4. Flue - 4" x 8" (8" O.D.) (A500D)

**W3 BEARING EXTERIOR BRICK WALL - SHERRE**



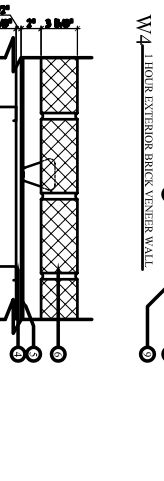
1. Concrete Block - 8" x 8" (Gymn block) (A500D)
2. Mortar - Blocks laid full bed of mortar, min. 3/8 in. thick, of bed fast then 2-1/4 in. and one hour 2-1/2 parts of clean sand to 1 part Portland cement (proportioned by volume) and not less than 20 percent hydrated lime (by cement volume). Vertical joints suggested.
3. Concrete Block - 8" x 8" (Gymn block) (A500D)
4. Flue - 4" x 8" (8" O.D.) (A500D)

**W4 1 HOUR EXTERIOR BRICK VENEER WALL**



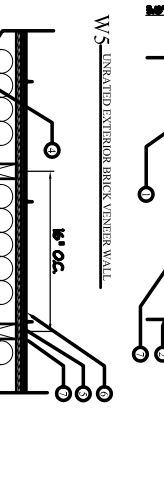
1. Wood Sinks - 2x4 @ 16" O.C. in. spaced 16 in. O.C. with 2 @ 2 1/2 in. top and one 2 1/2 in. bottom piece. Stud fastened to wood structural panel (sheathing) from 3/8" and differently in bottom piece.
2. Sheathing - 1/2" CDX or 1/2" Ply. 4 @ 16" O.C. applied vertically and horizontally over studs and over 1/2" OSB.
3. Insulation - 2" R-19 Fiberglas - 4 @ 16" O.C. applied vertically and horizontally over studs and over 1/2" OSB.
4. Diaphragm - 1/2" CDX or 1/2" Ply. 4 @ 16" O.C. applied vertically and horizontally over studs and over 1/2" OSB.
5. Mortar - Blocks laid full bed of mortar, min. 3/8 in. thick, of bed fast then 2-1/4 in. and one hour 2-1/2 parts of clean sand to 1 part Portland cement (proportioned by volume) and not less than 20 percent hydrated lime (by cement volume). Vertical joints suggested.
6. 2" Insulated Voids (A500D)
7. 8" x 8" (8" O.D.) (A500D)
8. 1/2" x 1/2" (1/2" O.D.) (A500D)

**W5 UNINSULATED EXTERIOR BRICK VENEER WALL**



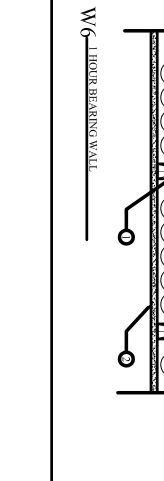
1. Wood Sinks - 2x4 @ 16" O.C. in. spaced 16 in. O.C. with 2 @ 2 1/2 in. top and one 2 1/2 in. bottom piece. Stud fastened to wood structural panel (sheathing) from 3/8" and differently in bottom piece.
2. Sheathing - 1/2" CDX or 1/2" Ply. 4 @ 16" O.C. applied vertically and horizontally over studs and over 1/2" OSB.
3. Insulation - 2" R-19 Fiberglas - 4 @ 16" O.C. applied vertically and horizontally over studs and over 1/2" OSB.
4. Diaphragm - 1/2" CDX or 1/2" Ply. 4 @ 16" O.C. applied vertically and horizontally over studs and over 1/2" OSB.
5. Mortar - Blocks laid full bed of mortar, min. 3/8 in. thick, of bed fast then 2-1/4 in. and one hour 2-1/2 parts of clean sand to 1 part Portland cement (proportioned by volume) and not less than 20 percent hydrated lime (by cement volume). Vertical joints suggested.
6. 2" Insulated Voids (A500D)
7. 8" x 8" (8" O.D.) (A500D)
8. 1/2" x 1/2" (1/2" O.D.) (A500D)

**W6 EXTERIOR BEARING WALL MATCHING INTERIOR**



1. Wood Sinks - 2x4 @ 16" O.C. in. spaced 16 in. O.C. with 2 @ 2 1/2 in. top and one 2 1/2 in. bottom piece. Stud fastened to wood structural panel (sheathing) from 3/8" and differently in bottom piece.
2. Sheathing - 1/2" CDX or 1/2" Ply. 4 @ 16" O.C. applied vertically and horizontally over studs and over 1/2" OSB.
3. Insulation - 2" R-19 Fiberglas - 4 @ 16" O.C. applied vertically and horizontally over studs and over 1/2" OSB.
4. Diaphragm - 1/2" CDX or 1/2" Ply. 4 @ 16" O.C. applied vertically and horizontally over studs and over 1/2" OSB.
5. Mortar - Blocks laid full bed of mortar, min. 3/8 in. thick, of bed fast then 2-1/4 in. and one hour 2-1/2 parts of clean sand to 1 part Portland cement (proportioned by volume) and not less than 20 percent hydrated lime (by cement volume). Vertical joints suggested.
6. 2" Insulated Voids (A500D)
7. 8" x 8" (8" O.D.) (A500D)
8. 1/2" x 1/2" (1/2" O.D.) (A500D)

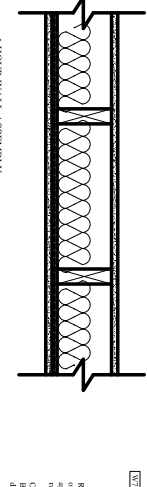
**W7 1 HOUR STEEL STUD WALL ASSEMBLY**



1. One layer 1/2" x 2 1/2" Perimeter type X gypsum board.
2. One layer 1/2" x 2 1/2" Perimeter type X gypsum board.
3. One layer 1/2" x 2 1/2" Perimeter type X gypsum board.
4. One layer 1/2" x 2 1/2" Perimeter type X gypsum board.
5. One layer 1/2" x 2 1/2" Perimeter type X gypsum board.
6. One layer 1/2" x 2 1/2" Perimeter type X gypsum board.
7. One layer 1/2" x 2 1/2" Perimeter type X gypsum board.
8. One layer 1/2" x 2 1/2" Perimeter type X gypsum board.

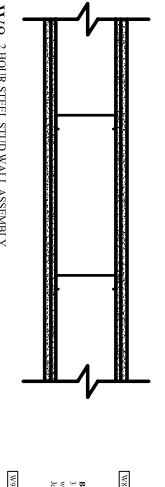
# WALL TYPES

**W8 1 HOUR STEEL STUD WALL ASSEMBLY**



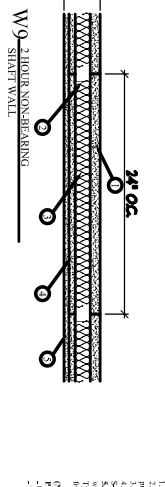
1. One layer 1/2" x 2 1/2" Perimeter type X gypsum board.
2. One layer 1/2" x 2 1/2" Perimeter type X gypsum board.
3. One layer 1/2" x 2 1/2" Perimeter type X gypsum board.
4. One layer 1/2" x 2 1/2" Perimeter type X gypsum board.
5. One layer 1/2" x 2 1/2" Perimeter type X gypsum board.
6. One layer 1/2" x 2 1/2" Perimeter type X gypsum board.
7. One layer 1/2" x 2 1/2" Perimeter type X gypsum board.
8. One layer 1/2" x 2 1/2" Perimeter type X gypsum board.

**W9 2 HOUR STEEL STUD WALL ASSEMBLY**



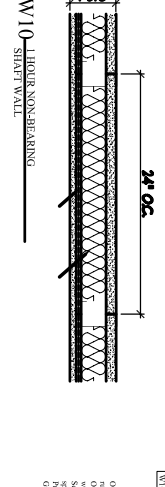
1. One layer 1/2" x 2 1/2" Perimeter type X gypsum board.
2. One layer 1/2" x 2 1/2" Perimeter type X gypsum board.
3. One layer 1/2" x 2 1/2" Perimeter type X gypsum board.
4. One layer 1/2" x 2 1/2" Perimeter type X gypsum board.
5. One layer 1/2" x 2 1/2" Perimeter type X gypsum board.
6. One layer 1/2" x 2 1/2" Perimeter type X gypsum board.
7. One layer 1/2" x 2 1/2" Perimeter type X gypsum board.
8. One layer 1/2" x 2 1/2" Perimeter type X gypsum board.

**W10 1 HOUR NON-BEARING SILENT WALL**



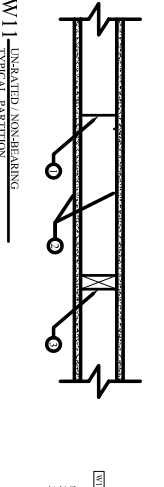
1. One layer 1/2" x 2 1/2" Perimeter type X gypsum board.
2. One layer 1/2" x 2 1/2" Perimeter type X gypsum board.
3. One layer 1/2" x 2 1/2" Perimeter type X gypsum board.
4. One layer 1/2" x 2 1/2" Perimeter type X gypsum board.
5. One layer 1/2" x 2 1/2" Perimeter type X gypsum board.
6. One layer 1/2" x 2 1/2" Perimeter type X gypsum board.
7. One layer 1/2" x 2 1/2" Perimeter type X gypsum board.
8. One layer 1/2" x 2 1/2" Perimeter type X gypsum board.

**W11 UNINSULATED NON-BEARING TYPICAL PARTITION**



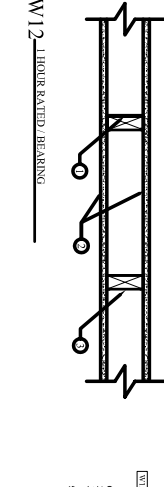
1. One layer 1/2" x 2 1/2" Perimeter type X gypsum board.
2. One layer 1/2" x 2 1/2" Perimeter type X gypsum board.
3. One layer 1/2" x 2 1/2" Perimeter type X gypsum board.
4. One layer 1/2" x 2 1/2" Perimeter type X gypsum board.
5. One layer 1/2" x 2 1/2" Perimeter type X gypsum board.
6. One layer 1/2" x 2 1/2" Perimeter type X gypsum board.
7. One layer 1/2" x 2 1/2" Perimeter type X gypsum board.
8. One layer 1/2" x 2 1/2" Perimeter type X gypsum board.

**W12 1 HOUR RATED BEARING**



1. One layer 1/2" x 2 1/2" Perimeter type X gypsum board.
2. One layer 1/2" x 2 1/2" Perimeter type X gypsum board.
3. One layer 1/2" x 2 1/2" Perimeter type X gypsum board.
4. One layer 1/2" x 2 1/2" Perimeter type X gypsum board.
5. One layer 1/2" x 2 1/2" Perimeter type X gypsum board.
6. One layer 1/2" x 2 1/2" Perimeter type X gypsum board.
7. One layer 1/2" x 2 1/2" Perimeter type X gypsum board.
8. One layer 1/2" x 2 1/2" Perimeter type X gypsum board.

**W13 1 HOUR BEARING WALL ASSEMBLY**



1. One layer 1/2" x 2 1/2" Perimeter type X gypsum board.
2. One layer 1/2" x 2 1/2" Perimeter type X gypsum board.
3. One layer 1/2" x 2 1/2" Perimeter type X gypsum board.
4. One layer 1/2" x 2 1/2" Perimeter type X gypsum board.
5. One layer 1/2" x 2 1/2" Perimeter type X gypsum board.
6. One layer 1/2" x 2 1/2" Perimeter type X gypsum board.
7. One layer 1/2" x 2 1/2" Perimeter type X gypsum board.
8. One layer 1/2" x 2 1/2" Perimeter type X gypsum board.

A22	WALL TYPES	Date: 12 July 2005	Scale: 2" = 1'-0"
	Project: WALKER TERRACE	Revisions:	Checked By:
	ONE WALKER STREET PORTLAND, MAINE		
<b>ARCHETYPE, P.A. ARCHITECTS</b> 48 Union Wharf Portland, Maine 04101 (207) 772-6022 Fax (207) 772-4056			
OWNER: MAINE WORKFORCE HOUSING, LLC One Longfellow Square, Portland, Maine 04101 (207) 871-9811 Fax (207) 761-0155			