

# VITOCROSSAL 300 CU3A

## HIGHLIGHTS

- Compact, floor-standing gas condensing boiler from 19 -199 MBH.
- Multi-boiler installation with 8 boilers up to 1592 MBH.
- High efficiency of 95% AFUE on all models.
- High temperature operation of up to 190°F.
- Inox-Crossal heat transfer surface – 316Ti stainless steel heat exchanger for efficient utilization of condensing technology – self-cleaning effect via smooth stainless steel surfaces.
- No dedicated boiler pump required and eliminates primary/secondary piping.
- MatriX dome gas burner with 5:1 turndown ratio to ensure high efficiency and extremely clean combustion.
- High water volume extends burner run time and reduces cycling.
- Simple commissioning with no field adjustments. A self-calibrating Lambda Pro combustion management system ensures optimal combustion efficiency at all times regardless of gas/air quality.
- Easy conversion from natural gas to liquid propane with no orifice change.
- Durable, reliable, and long service life with Inox-Crossal stainless steel heat exchanger and high mass design.
- Multiple venting options and configurations with vent lengths up to 198’.

### Vitocrossal 300, CU3A

- 1 Vitotronic 200 control KW6B with graphic user interface
- 2 Water-cooled stainless steel combustion chamber
- 3 Modulating MatriX dome gas burner
- 4 Stainless steel Inox-Crossal heat exchanger
- 5 Highly effective thermal insulation
- 6 Flue gas collector with condensate drain pipe
- 7 Combustion air inlet connection

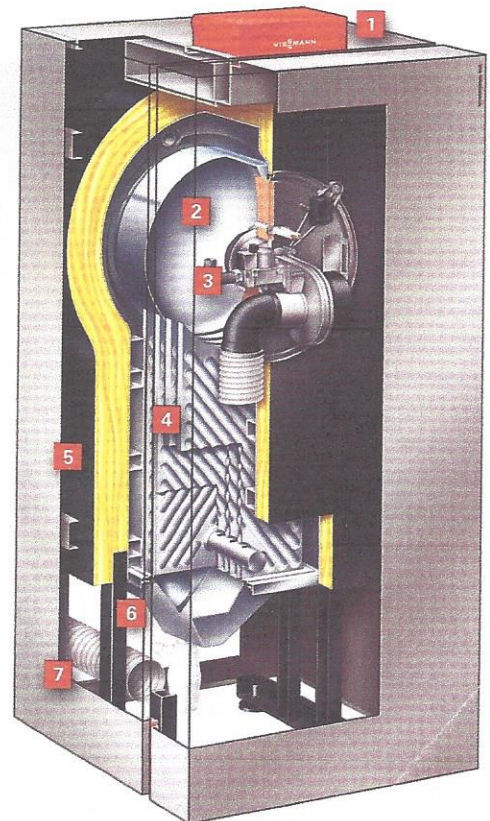
## VITOCROSSAL 300 CU3A

Vitocrossal 300, CU3A gas-fired condensing boiler

Model		26	35	45	57
AFUE	%	95	95	95	95
Minimum Input (NG)	MBH	19	25	43	43
Maximum Input (NG)	MBH	94	125	160	199
Net AHRI Rating	MBH	76	101	129	161
<b>Overall Dimension*</b>					
Width	Inches	26	26	26	26
Height	Inches	67	67	67	67
Depth (Length)	Inches	27	27	31.5	31.5
Weight	lbs	269	275	341	352
Boiler Water Content	USG	13.5	13	18.8	18.8
Heat Exchanger Surface	ft. <sup>2</sup>	16.7	20.7	34.1	34.1
Maximum Operating Pressure	psig	30	30	30	30
<b>Minimum Gas Supply Pressure</b>					
Natural Gas	"w.c.	4	4	4	4
Liquid Propane Gas	"w.c.	10	10	10	10
<b>Boiler water temperature maximum</b>					
Adjustable high limit (AHL) range space heating (steady state)		190° F	190° F	190° F	190° F

For latest technical data, visit [uncompromise.us](http://uncompromise.us)

*THIS ONE*



Learn more at  
**UNCOMPROMISE.US**

5471213 06/2015 Printed in USA

**VIESSMANN**