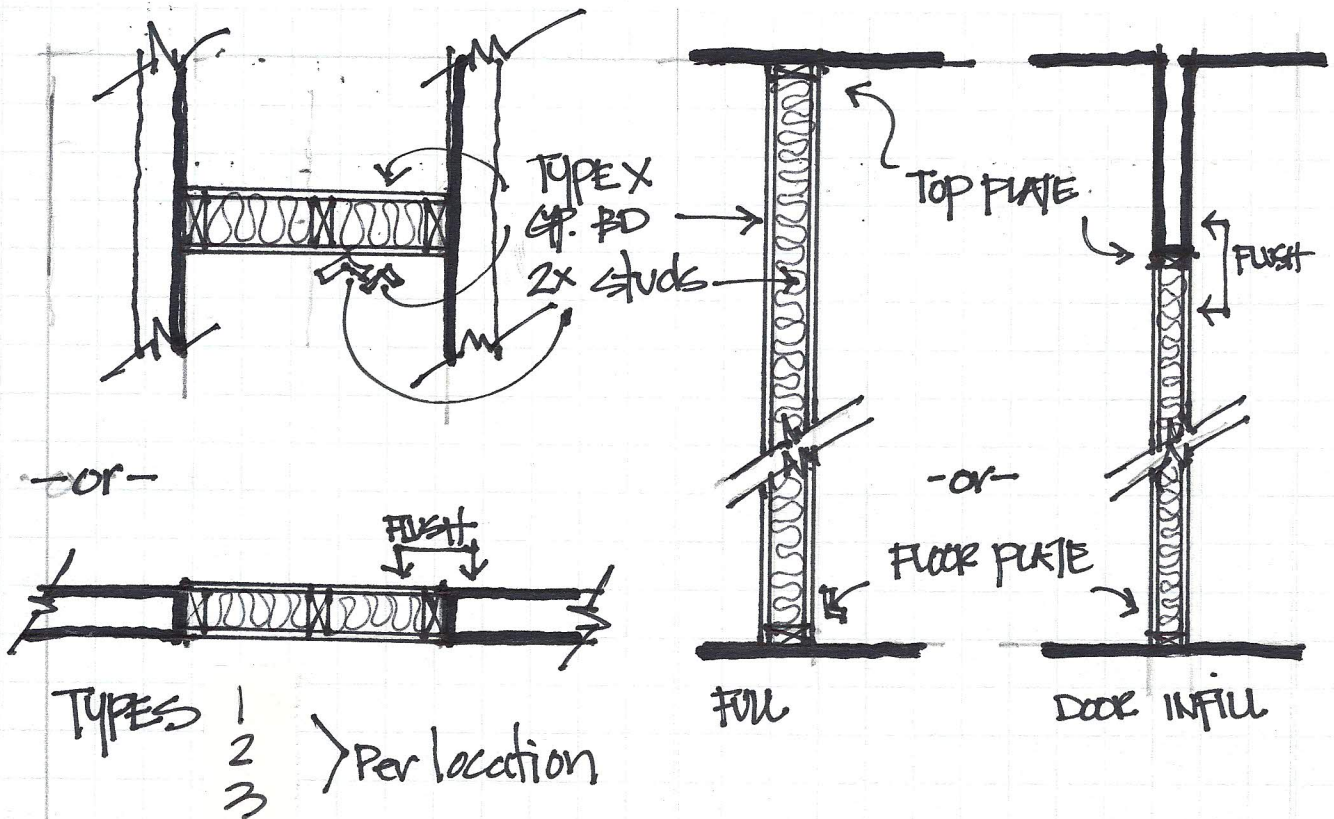


- ① ~~###~~ 1-Hour Rated Demising Wall  
Non-Load Bearing  
2x4 or 2x6 Wood Studs 16" O.C. maximum with  
5/8" Type X Gyp. Bd. both sides
- ② ~~###~~ 1-Rated Demising Wall - Existing Door Infill\*  
Non-Load Bearing  
2x4 or 2x6 Wood Studs 16" O.C. maximum with  
5/8" Type X Gyp. Bd. both sides
- ③ ~~###~~ Partition Wall / Door Infill\*  
Non-Load Bearing  
2x4 or 2x6 Wood Studs 16" O.C. maximum with  
5/8" Type X Gyp. Bd. both sides

NEW 1 HR RATED  
DEMISING WALLS  
TO INCLUDE  
MINERAL WOOL SOUND  
BATS, JOHN MANVILLE  
SOUND & FIREBLOCK - or  
equivalent.

\* Existing door casings to be removed with new Gyp Bd flush with existing lathe and plaster walls. Tape and sand flush.



TYPICAL PLAN-

TYPICAL SECTION

# A 3.1 - WALL TYPES / SECTIONS