

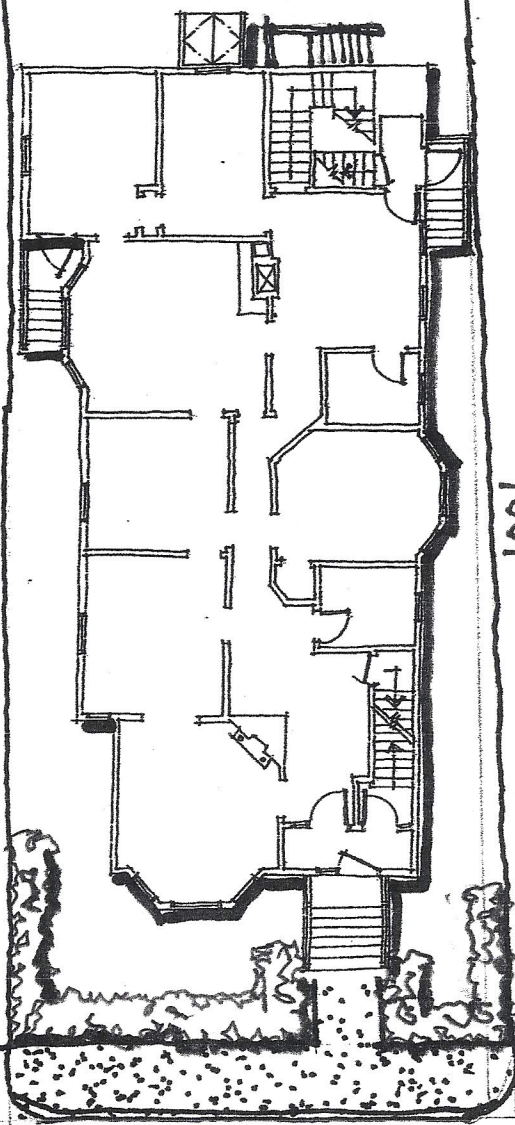
67.5'

90'

CEL OFFS B015001  
.1661 acres  
7236 sf.

2 FLOORS  
3968 SF

OFF STREET PARKING  
existing paved lot

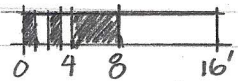


100'

PLYTH COURT

5 WEST STREET

1/16" = 1'-0"



G1.1 - GENERAL CONDITIONS - LOCATION PLAN