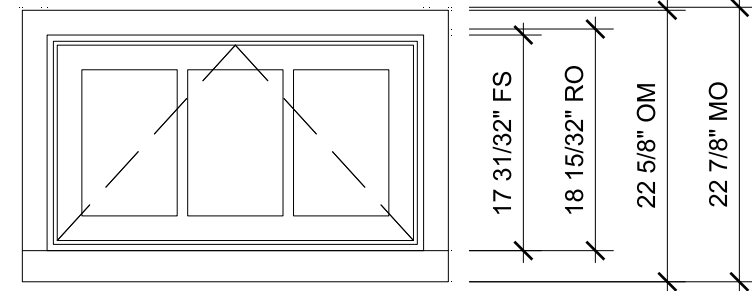
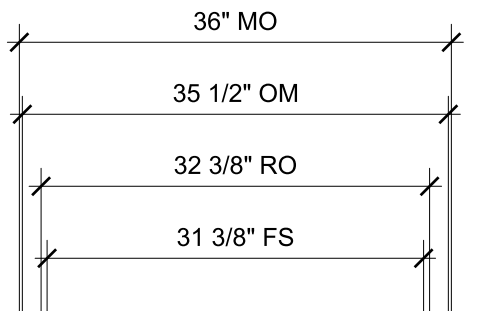


EXISTING ELEVATION 3/4" = 1'-0"



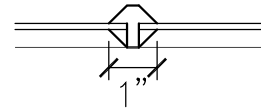
ALUM CLAD AWNING

SCALE: 3/4" = 1'-0"

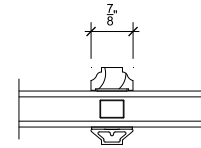
- 1/3 Head
- 2/3 Jamb
- 3/3 Sill
- 4/3 Divided Lite



EXISTING WINDOW



EXISTING MUNTIN DETAIL
3" = 1'-0"



PROPOSED MUNTIN DETAIL
3" = 1'-0"

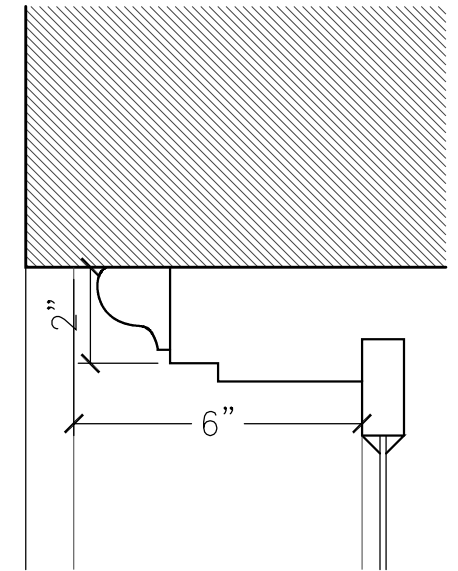
SPECIFICATIONS

Brand: Marvin
Series: Clad
Rough Opening: 32 3/8" X 18 15/32"
Exterior Finish: Ebony
Species: Pine
Interior Finish: Primed
Glass Information: IG - 3/4", Low E2 w/Argon, Stainless
Divider Type: 7/8" Rectangular SDL W/ Spacer - Stainless
Hardware Type: Folding Handle, No Sash Travel Limiter
Hardware Color: Satin Nickel
Screen Type: Aluminum Screen
Screen Surround Color: White
Screen Mesh Type: Charcoal Fiberglass Mesh
Jamb Depth: 4 9/16"
Interior Trim: None
Exterior Casing: Stratton A1449 Clad Casing, Sierra White, Casing with Subsill
Subsill: A1452 Subsill, Sierra White
FOR DESIGN INTENT ONLY, NOT FOR MANUFACTURE.

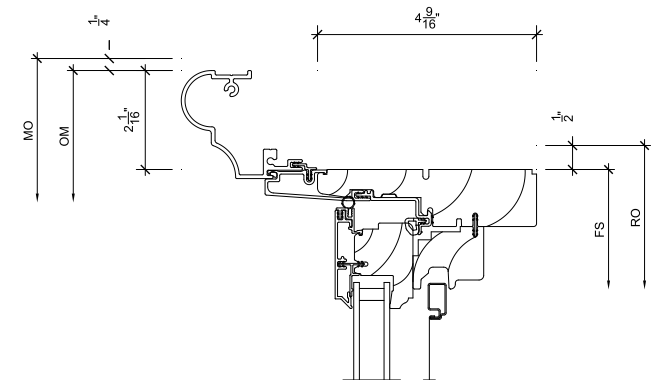
GLAZING AREA COMPARISON

EXISTING:
28"W X 13.5"H

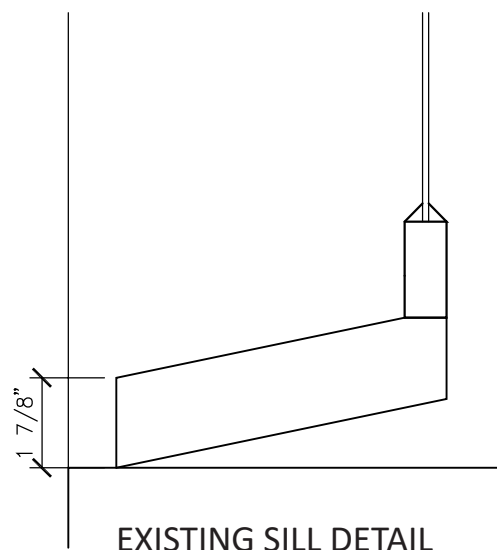
PROPOSED:
26.25"W X 12.25"H



EXISTING JAMB/HEAD DETAIL
3" = 1'-0"

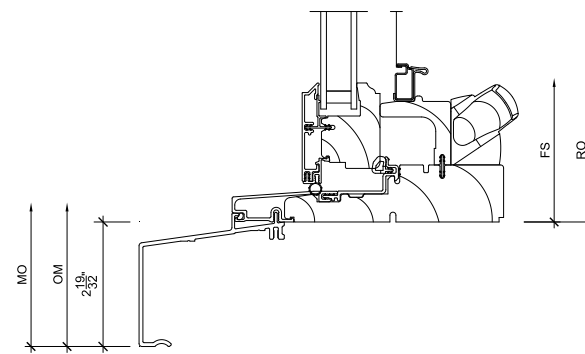


PROPOSED JAMB/HEAD DETAIL
3" = 1'-0"



EXISTING SILL DETAIL

3" = 1'-0"



PROPOSED SILL DETAIL

3" = 1'-0"

BASEMENT WINDOW ELEVATION AND SECTION COMPARISON